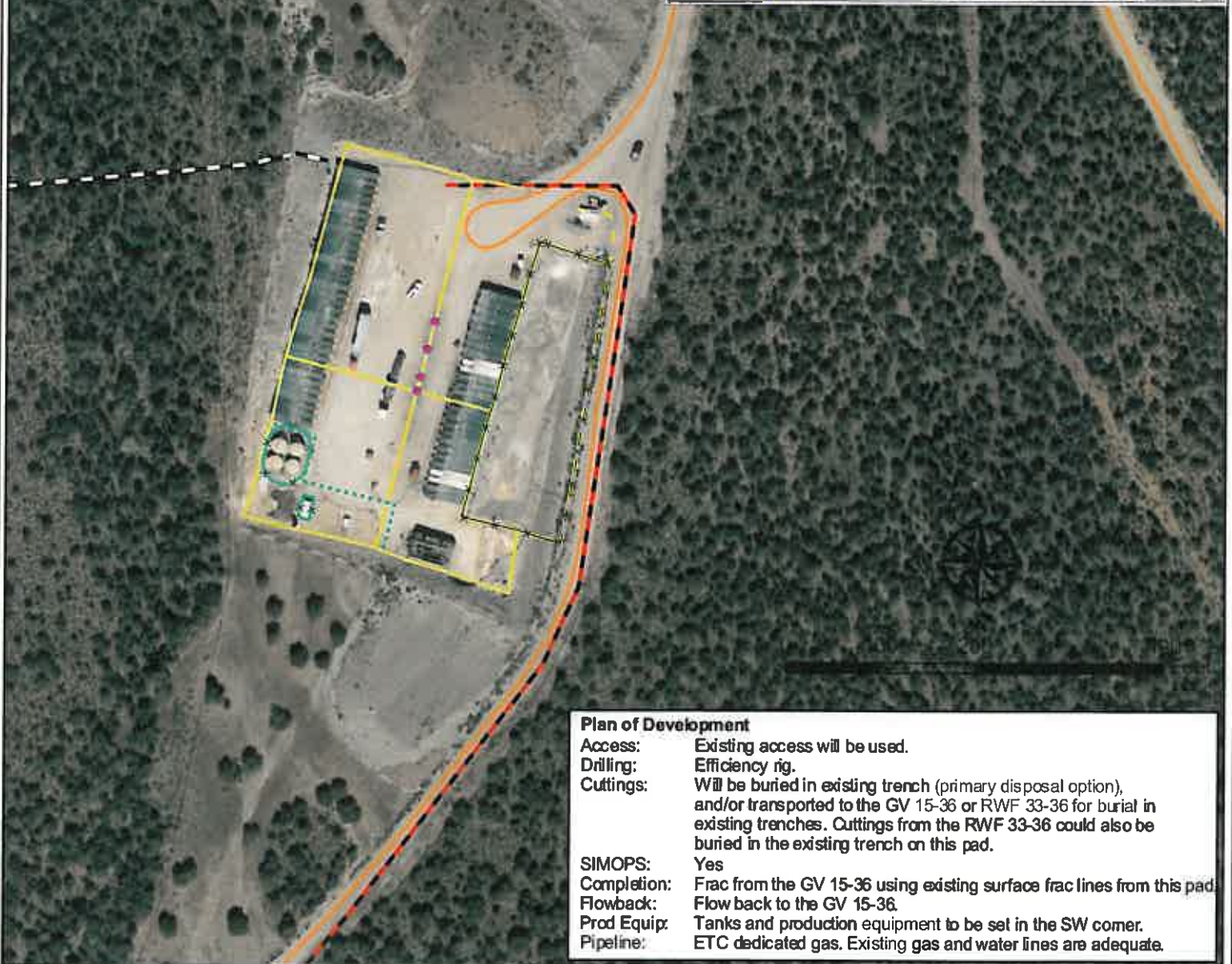


Geologist Information

General: Existing location, 8 new wells (8 initially; 4 existing)
 Ownership: Fee Surface, Fee minerals
 SUA Status: Existing, needs to be amended to include new wells
 Spacing Units: 1 - Sec 36
 Adjacent Owners: BLM



Plan of Development

Access: Existing access will be used.
Drilling: Efficiency rig.
Cuttings: Will be buried in existing trench (primary disposal option), and/or transported to the GV 15-36 or RWF 33-36 for burial in existing trenches. Cuttings from the RWF 33-36 could also be buried in the existing trench on this pad.
SIMOPS: Yes
Completion: Frac from the GV 15-36 using existing surface frac lines from this pad.
Flowback: Flow back to the GV 15-36.
Prod Equip: Tanks and production equipment to be set in the SW corner.
Pipeline: ETC dedicated gas. Existing gas and water lines are adequate.

Legend

- Production Gas Well
- Existing Surface Frac Line
- Proposed Production Equipment Area
- Proposed Surface Frac Line
- Existing Production Equipment
- Road
- Existing Limit of Disturbance
- Parcel Ownership (from Garfield County)
- Proposed Pad or Pit
- BLM
- X---X Existing Fence

Williams Production RMT

RWF 32-36 Plan of Development
 T6S R94W, Section 36

Date Prepared: April 11, 2011

