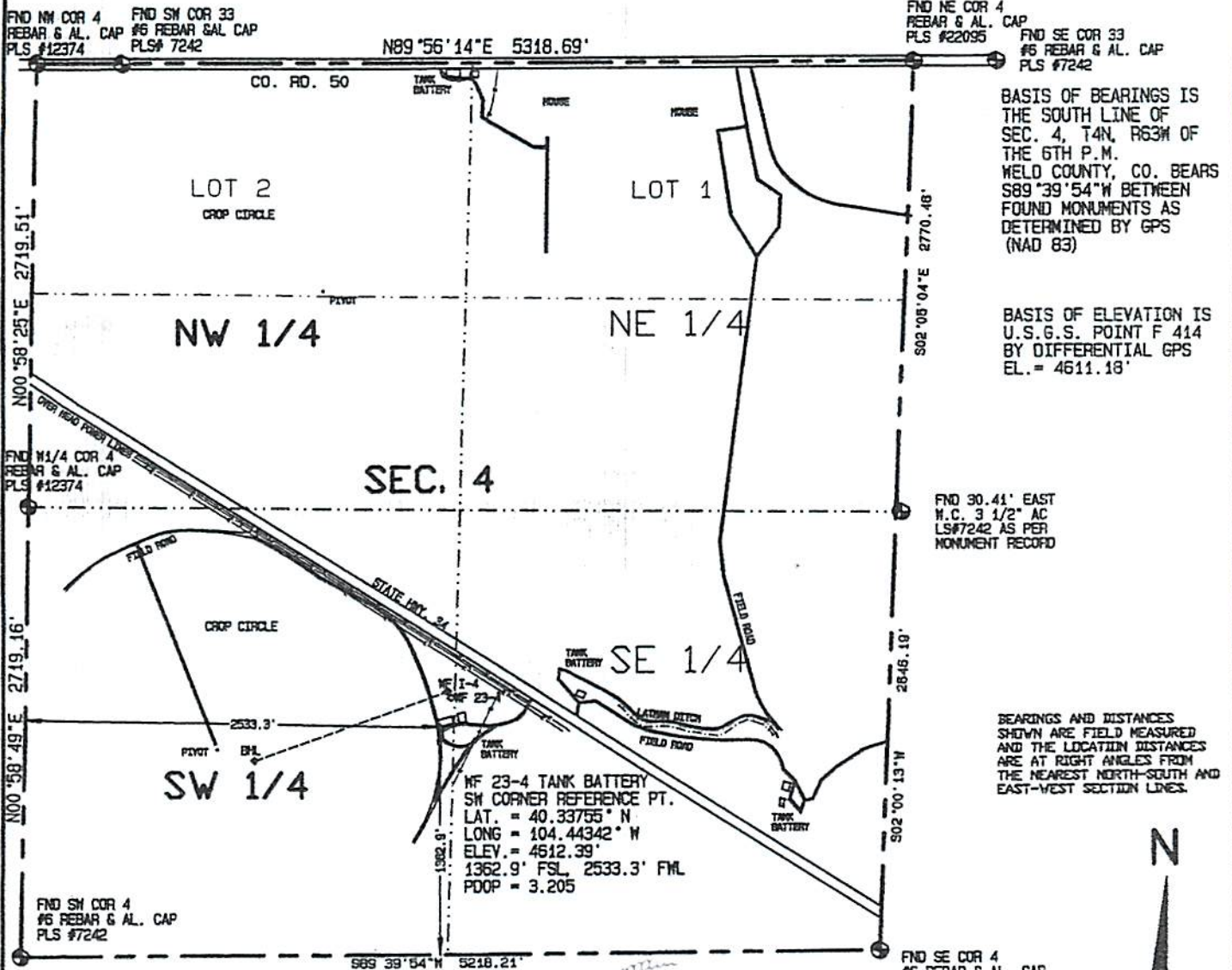
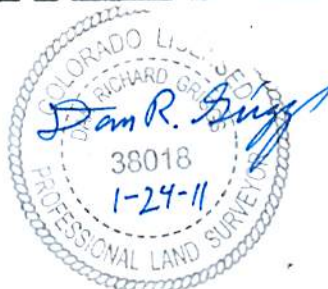


IMPROVEMENTS WITHIN 400' OF THE SW CORNER REFERENCE POINT INCLUDE: A WELL (WF-23-4) IS 188', A TANK BATTERY IS ADJACENT TO THE EAST, A CROP CIRCLE ROAD IS ADJACENT TO THE WEST HIGH VOLTAGE POWER LINES RUN 379' NE, AN OVER HEAD POWER LINE RUNS 227' SE,



I HEREBY CERTIFY THAT THIS PLAT IS AN ACCURATE REPRESENTATION OF A CORRECT SURVEY SHOWING THE LOCATION OF SAID WELLSITE:



Dan R. Griggs PLS# 38018

CONTRACT SURVEYORS, LTD.
COMPLETE SURVEYING AND GLOBAL POSITIONING

2133 SOUTH BELLAIRE STREET #14
DENVER COLORADO 80222
(303) 756-3695



MULTI-WELL PLAN
Page 2

CSL# 11104-02

DATE OF FIELD WORK

14 JANUARY, 2011

DATE OF DRAWING

24 JANUARY, 2011

WETCO FARMS 23-4 TANK BATTERY

NE SW SEC. 4, T4N, R63W

BONANZA CREEK ENERGY OPERATING COMPANY, LLC

WELD COUNTY, COLORADO