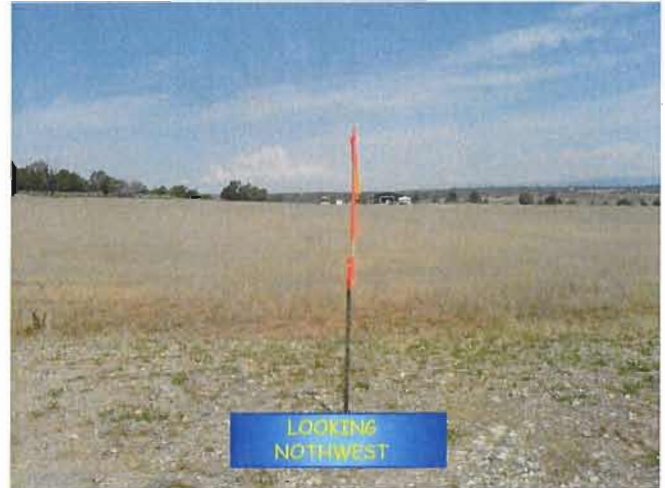


XTO ENERGY INC.
R & G #26-3

SURFACE LOCATION: 1680' FSL, 1553' FEL,
SECTION 26, T-33-N, R-07-W, N.M.P.M.,
LA PLATA COUNTY, COLORADO
LAT: 37.07217° N LONG: 107.57383° W NAD 83
ELEVATION AT STAKE = 6,506' NAVD 88



Russell Surveying, Inc.
1409 W. Aztec Blvd. #2
Aztec, New Mexico 87410
(505) 334-8637

JOB# XT0016 DATE: 12/30/09 BY: GRR