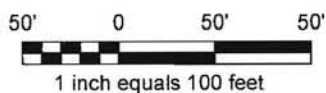
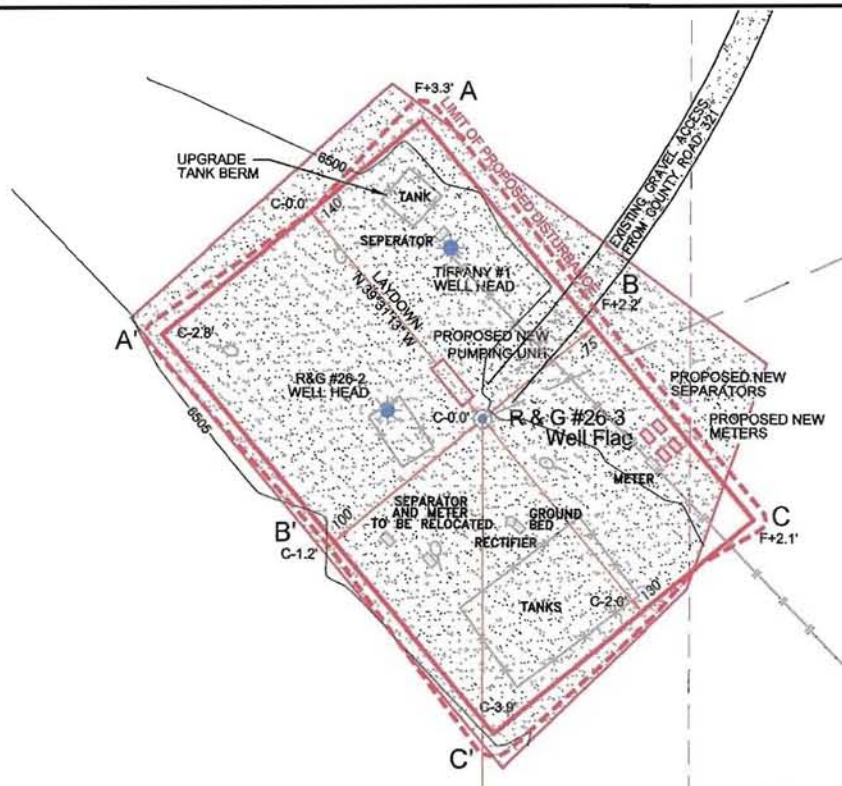


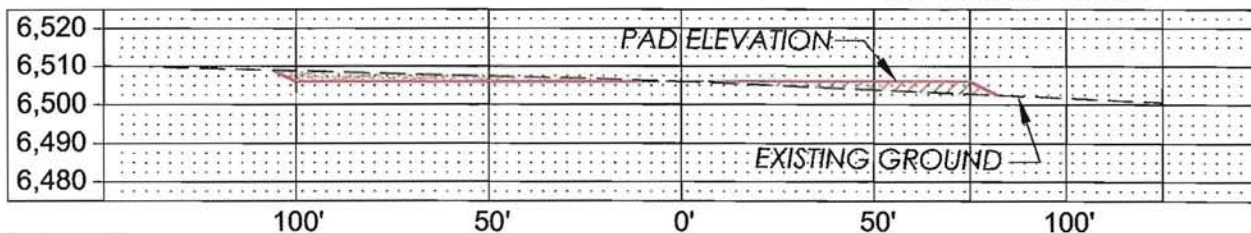


XTO ENERGY INC. - R & G #26-3
1600' FSL, 1442' FEL, SECTION 26, T-33-N, R-07-W, N.M.P.M.,
LA PLATA COUNTY, COLORADO ELEVATION AT STAKE = 6,506' NAVD 88



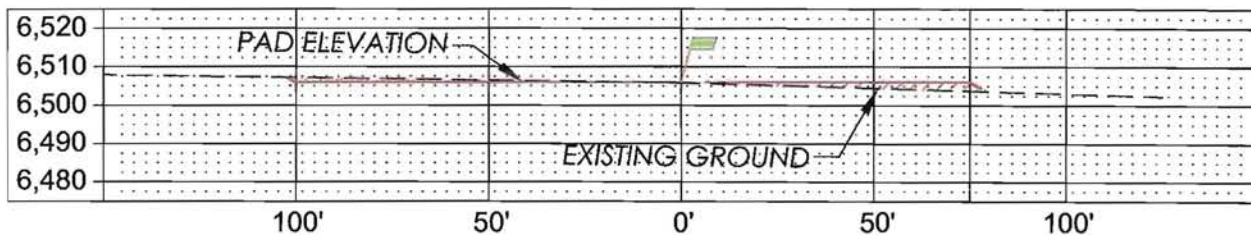
- NOTES:
1. DATE OF FIELD SURVEY 11/24/09
 2. THE LOCATIONS OF UNDERGROUND UTILITIES DEPICTED ARE APPROXIMATE. ACTUAL LOCATIONS OF UNDERGROUND UTILITIES MUST BE FIELD VERIFIED PRIOR TO CONSTRUCTION.
 3. ELEVATION DATUM - NAVD88
 4. CONTOURS SHOWN AT 5' INTERVALS

A'-A



HOR. SCALE: 1"=50'
VER. SCALE: 1"=50'

B'-B



C'-C

