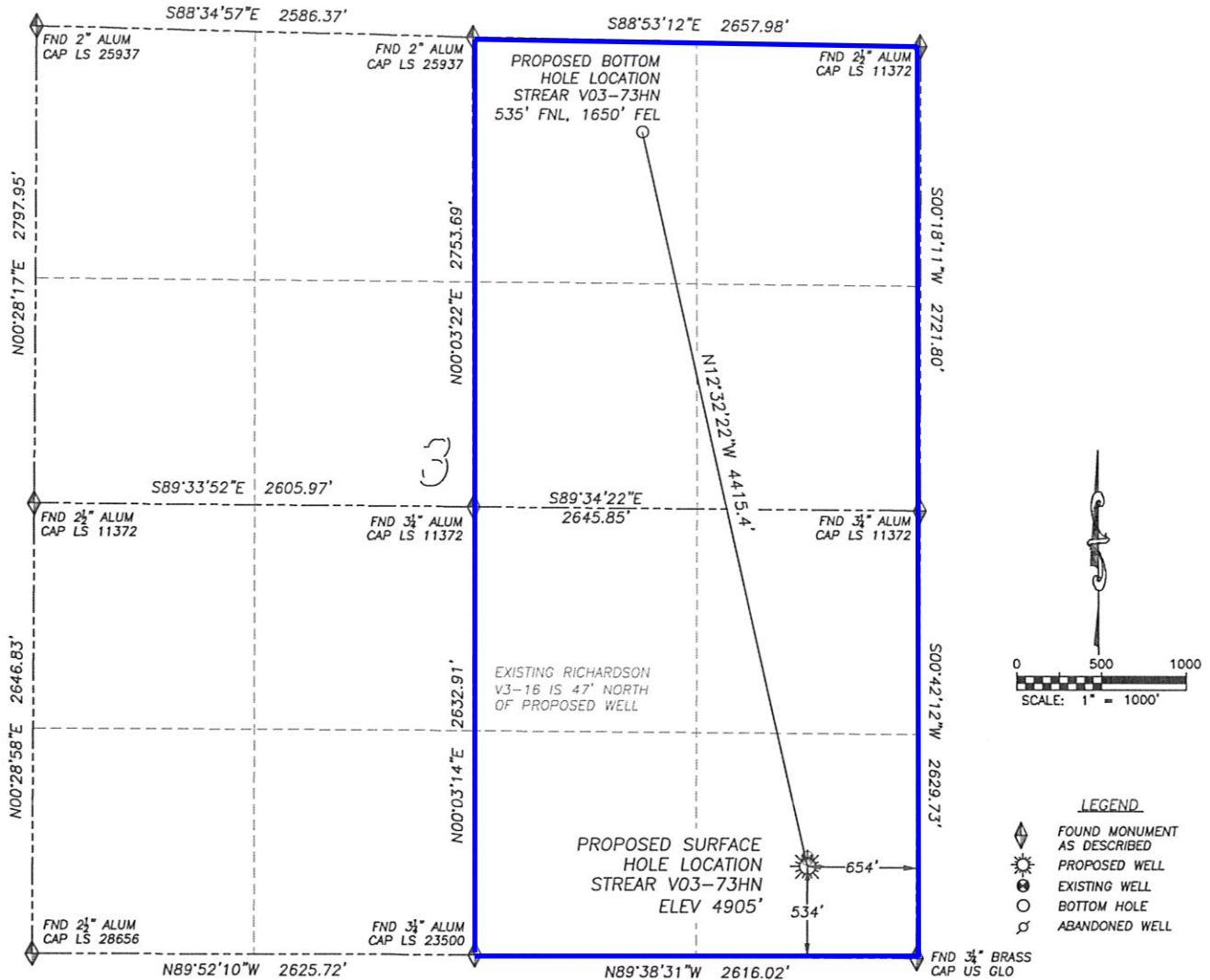


WELL LOCATION CERTIFICATE STREAR V03-73HN

SECTION 3, TOWNSHIP 2 NORTH, RANGE 67 WEST OF THE 6TH PRINCIPAL MERIDIAN



NAD 83 LATITUDE AND LONGITUDE

STREAR V03-73HN SURFACE HOLE:

LATITUDE: N40.16132°
LONGITUDE: W104.86944°
ELEVATION: 4905'
FOOTAGE: 534' FSL, 654' FEL
PDOP: 1.8
QTR/QTR: SE4/SE4
PROP LINE: 504'± SOUTH

BOTTOM HOLE:

LATITUDE: N40.17315°
LONGITUDE: W104.87287°
FOOTAGE: 535' FNL, 1650' FEL

NEAREST EXISTING WELL:

RICHARDSON V3-16 SURFACE HOLE
LATITUDE: N40.16145°
LONGITUDE: W104.86943°
ELEVATION: 4905'
47' NORTH

IN ACCORDANCE WITH A REQUEST FROM ERIK VAN DECAR OF NOBLE ENERGY INC., DALEY LAND SURVEYING, INC. HAS DETERMINED THE SURFACE LOCATION OF THE STREAR V03-73HN WELL TO BE 534' FSL, 654' FEL, AS MEASURED AT NINETY (90) DEGREES FROM THE SECTION LINES OF SECTION 3, TOWNSHIP 2 NORTH, RANGE 67 WEST OF THE 6TH PRINCIPAL MERIDIAN, WELD COUNTY, COLORADO. THE BOTTOM HOLE LOCATION, PROVIDED BY THE CLIENT, IS TO BE 535' FNL, 1650' FEL.

I HEREBY CERTIFY THAT THIS WELL LOCATION CERTIFICATE WAS PREPARED BY ME OR UNDER MY DIRECT SUPERVISION, THAT THE WORK WAS COMPLETED ON 3/23/2011 FOR AND ON BEHALF OF NOBLE ENERGY, INC., AND THAT THIS MAP DOES NOT REPRESENT A BOUNDARY SURVEY, IT IS NOT A LAND SURVEY PLAT OR AN IMPROVEMENT SURVEY PLAT AND IT IS NOT TO BE RELIED UPON FOR THE ESTABLISHMENT OF FENCE, BUILDING OR OTHER FUTURE IMPROVEMENT LINES.

NOTES:

- 1) BEARINGS FOR THIS MAP ARE ASSUMED AND BASED UPON GPS OBSERVATIONS MADE BETWEEN MONUMENTS LOCATED AT THE SOUTHEAST CORNER AND SOUTH QUARTER CORNER OF SECTION 3, T.2N., R.67W.
- 2) HORIZONTAL DATUM IS NAD83.
- 3) VERTICAL DATUM IS NAVD88. ELEVATIONS ARE DERIVED FROM GPS OBSERVATIONS PROCESSED THROUGH OPUS, UTILIZING THE GEOID03 MODEL.
- 4) SEE LOCATION DRAWING FOR VISIBLE IMPROVEMENTS WITHIN 600' OF PROPOSED SURFACE HOLE LOCATION.
- 5) SURFACE USE: PASTURE.

NOTICE: According to Colorado law you MUST commence any legal action based upon any defect in this W.L.C. within three years after you first discover such defect. In no event may any action based upon any such defect in this W.L.C. be commenced more than ten years from the date of the certification shown hereon.



FOR AND ON BEHALF OF
DALEY LAND SURVEYING INC.,
Robert Daley, PLS 35597