

---

# **PATARA OIL AND GAS LLC**

---

**ANDYS MESA 76  
ANDYS MESA  
Garfield County , Colorado**

## **Cement Surface Casing** **08-Aug-2010**

### **Post Job Summary**

## Cementing Job Summary

## *The Road to Excellence Starts with Safety*

<b>Sold To #:</b> 356856	<b>Ship To #:</b> 2799738	<b>Quote #:</b>	<b>Sales Order #:</b> 7545794
<b>Customer:</b> PATARA OIL AND GAS LLC		<b>Customer Rep:</b> Risen, Richard	
<b>Well Name:</b> ANDYS MESA	<b>Well #:</b> 76	<b>API/UWI #:</b> 05-113-06251	
<b>Field:</b> ANDYS MESA	<b>City (SAP):</b> SLICK ROCK	<b>County/Parish:</b> Garfield	<b>State:</b> Colorado
<b>Lat:</b> N 39.056 deg. OR N 39 deg. 3 min. 20.124 secs.		<b>Long:</b> W 108.651 deg. OR W -109 deg. 20 min. 55.385 secs.	
<b>Contractor:</b> L & W		<b>Rig/Platform Name/Num:</b> L & W 1	
<b>Job Purpose:</b> Cement Surface Casing			
<b>Well Type:</b> Development Well		<b>Job Type:</b> Cement Surface Casing	
<b>Sales Person:</b> DUNNING, DUSTIN		<b>Srvs Supervisor:</b> PHILLIPS, MARK	<b>MBU ID Emp #:</b> 445272

## Job Personnel

HES Emp Name	Exp Hrs	Emp #	HES Emp Name	Exp Hrs	Emp #	HES Emp Name	Exp Hrs	Emp #
FEUERBORN, JOHN William	4	381677	HAMMOND, DENNIS C	4	287025	HAYES, JESSE Doug	18	403601
JENSEN, SHANE Lynn	4	441759	KUKUS, CRAIG A	18	369124	PHILLIPS, MARK Bejar	18	445272
TRIPLETT, MICHEAL Anthony	18	447908						

## Equipment

HES Unit #	Distance-1 way	HES Unit #	Distance-1 way	HES Unit #	Distance-1 way	HES Unit #	Distance-1 way
10001431	145 mile	10551730C	145 mile	10724643	145 mile	10784080	145 mile
10804487	145 mile	10804579	145 mile	10951244	145 mile		

### Job Hours

Date	On Location Hours	Operating Hours	Date	On Location Hours	Operating Hours	Date	On Location Hours	Operating Hours
08-08-2010	18	5						
<b>TOTAL</b>					Total is the sum of each column separately			

**Job**

### Job Times

Formation Name					Date				Time	Time Zone
Formation Depth (MD)	Top			Bottom			Called Out	07 - Aug - 2010	20:00	CST
Form Type				BHST	123 degF		On Location	08 - Aug - 2010	01:45	CST
Job depth MD	2875. ft			Job Depth TVD	2875. ft		Job Started	08 - Aug - 2010	13:06	CST
Water Depth				Wk Ht Above Floor	6. ft		Job Completed	08 - Aug - 2010	14:52	CST
Perforation Depth (MD)	From			To			Departed Loc	08 - Aug - 2010	20:30	CST

## Well Data

<i>Description</i>	<b>New / Used</b>	<b>Max pressure psig</b>	<b>Size in</b>	<b>ID in</b>	<b>Weight lbm/ft</b>	<b>Thread</b>	<b>Grade</b>	<b>Top MD ft</b>	<b>Bottom MD ft</b>	<b>Top TVD ft</b>	<b>Bottom TVD ft</b>
--------------------	-----------------------	----------------------------------	--------------------	------------------	--------------------------	---------------	--------------	----------------------	-----------------------------	---------------------------	------------------------------

## Tools and Accessories

Type	Size	Qty	Make	Depth	Type	Size	Qty	Make	Depth	Type	Size	Qty	Make
Guide Shoe					Packer					Top Plug	9.625	1	HES
Float Shoe					Bridge Plug					Bottom Plug			
Float Collar					Retainer					SSR plug set			
Insert Float										Plug Container	9.625	1	HES
Stage Tool										Centralizers			

## Miscellaneous Materials

Gelling Agt	Conc	Surfactant	Conc	Acid Type	Qty	Conc	%
Treatment Fld	Conc	Inhibitor	Conc	Sand Type	Size	Qty	

Fluid Data									
Stage/Plug #: 1									
Fluid #	Stage Type	Fluid Name	Qty	Qty uom	Mixing Density lbm/gal	Yield ft <sup>3</sup> /sk	Mix Fluid Gal/sk	Rate bbl/min	Total Mix Fluid Gal/sk
1	Fresh Water		20.00	bbl	8.4	.0	.0	2.0	
2	Lead Cement	VARICEM (TM) CEMENT (452009)	550.0	sacks	12.3	2.36	13.63	6.0	13.63
		13.63 Gal	FRESH WATER						
3	Tail Cement	VERSACEM (TM) SYSTEM (452010)	250.0	sacks	14.2	1.43	6.8	5.0	6.8
		6.8 Gal	FRESH WATER						
4	Displacement Fluid		196.00	bbl	8.4	.0	.0	7.0	
5	Top Out	HALCEM (TM) SYSTEM (452986)	100.0	sacks	12.5	1.97	10.96	1.8	10.96
		10.96 Gal	FRESH WATER						
Calculated Values		Pressures		Volumes					
Displacement	196	Shut In: Instant		Lost Returns	0	Cement Slurry	295	Pad	
Top Of Cement	SURFACE	5 Min		Cement Returns	60	Actual Displacement	196	Treatment	
Frac Gradient		15 Min		Spacers	20	Load and Breakdown		Total Job	510
Rates									
Circulating	10	Mixing	6	Displacement	7	Avg. Job	6		
Cement Left In Pipe	Amount	0 ft	Reason	Shoe Joint					
Frac Ring # 1 @	ID	Frac ring # 2 @	ID	Frac Ring # 3 @	ID	Frac Ring # 4 @	ID		
The Information Stated Herein Is Correct				Customer Representative Signature					

*The Road to Excellence Starts with Safety*

<b>Sold To #:</b> 356856	<b>Ship To #:</b> 2799738	<b>Quote #:</b>	<b>Sales Order #:</b> 7545794
<b>Customer:</b> PATARA OIL AND GAS LLC		<b>Customer Rep:</b> Risen, Richard	
<b>Well Name:</b> ANDYS MESA		<b>Well #:</b> 76	<b>API/UWI #:</b> 05-113-06251
<b>Field:</b> ANDYS MESA	<b>City (SAP):</b> SLICK ROCK	<b>County/Parish:</b> Garfield	<b>State:</b> Colorado
<b>Legal Description:</b>			
<b>Lat:</b> N 39.056 deg. OR N 39 deg. 3 min. 20.124 secs.		<b>Long:</b> W 108.651 deg. OR W -109 deg. 20 min. 55.385 secs.	
<b>Contractor:</b> L & W		<b>Rig/Platform Name/Num:</b> L & W 1	
<b>Job Purpose:</b> Cement Surface Casing			<b>Ticket Amount:</b>
<b>Well Type:</b> Development Well		<b>Job Type:</b> Cement Surface Casing	
<b>Sales Person:</b> DUNNING, DUSTIN		<b>Srv Supervisor:</b> PHILLIPS, MARK	<b>MBU ID Emp #:</b> 445272

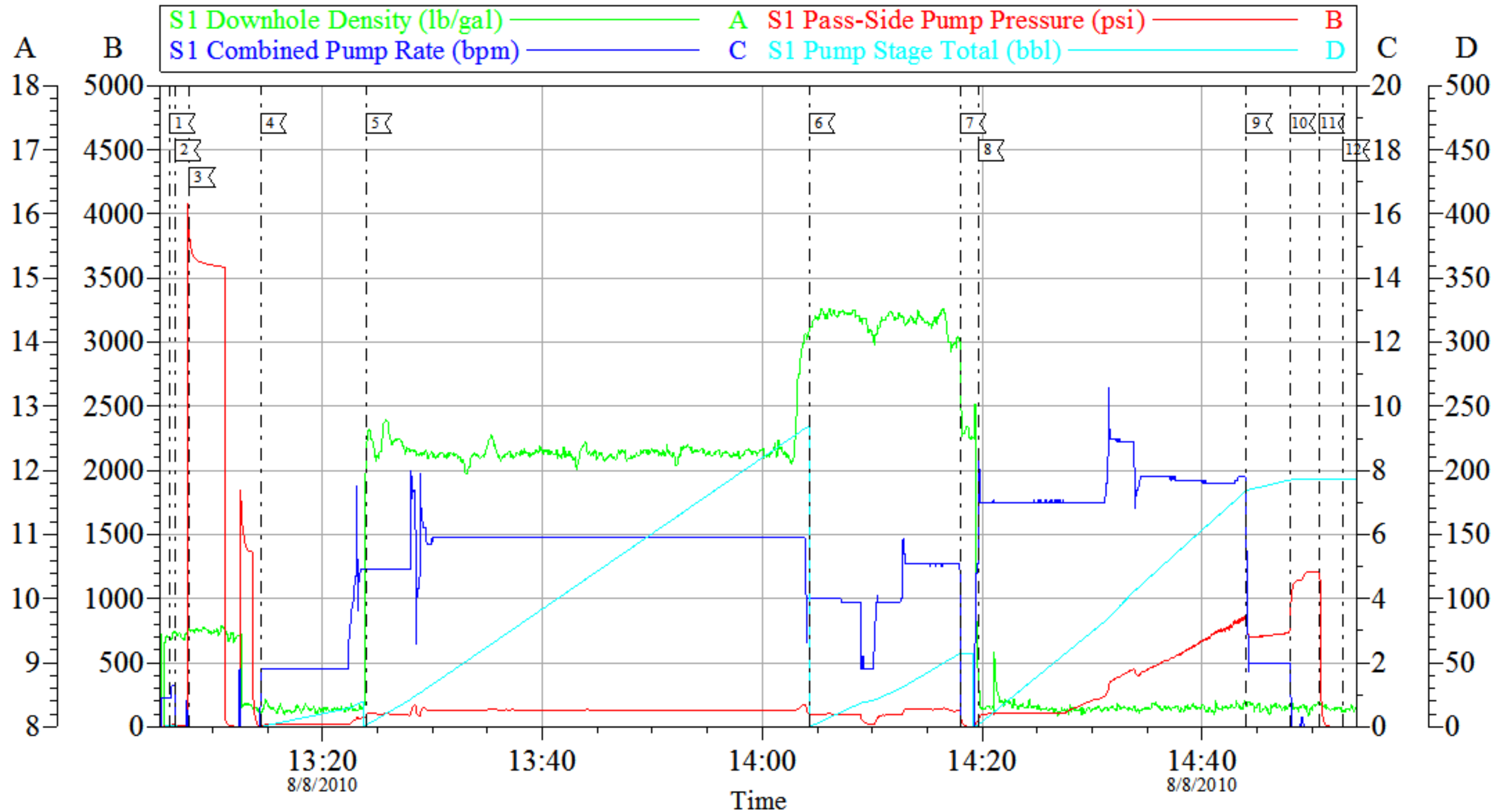
Activity Description	Date/Time	Cht #	Rate bbl/min	Volume bbl		Pressure psig		Comments
				Stage	Total	Tubing	Casing	
Pre-Convoy Safety Meeting	08/07/2010 09:30							ALL HES EMPLOYEES
Call Out	08/07/2010 20:00							
Arrive At Loc	08/08/2010 01:45							RIG STILL RUNNING CASING
Assessment Of Location Safety Meeting	08/08/2010 02:00							ALL HES EMPLOYEES, POST CALCULATION OF JOB NOT ENOUGH CMT DELIVERED. WELL BORE WAS CALCULATED WITH 8.625" CSG IN A 11" HOLE. THIS WAS SUBMITTED TO HES FROM A PREVIOUS BJ SERVICES PROPOSAL. ADDITIONAL CMT ORDERED AT 0345 AM.
Rig-Up Equipment	08/08/2010 02:01							1 HT-400 PUMP TRUCK, 4 660 BULK TRUCK, 1 F-450 P/U, 1 QUICK LATCH PLUG CONTAINER
Pre-Job Safety Meeting	08/08/2010 12:30							ALL HES EMPLOYEES, RIG CREW, CO REP AND ANY 3RD PARTY VENDORS

Activity Description	Date/Time	Cht #	Rate bbl/min	Volume bbl		Pressure psig		Comments
				Stage	Total	Tubing	Casing	
Start Job	08/08/2010 13:06							SP 2578 FT, TD 2575 FT, FC 2535 FT, HOLE 12.25", MUD WT 8.34 PPG, RATE WILL BE 7-7-2, WILL BUMP 500 PSI OVER LAND PSI, RIG CIRCULATED HOLE FOR 9 HRS. SJ 43 FT.
Pump Water	08/08/2010 13:07		2	2			16.0	FILL LINES PRIOR TO PRESSURE TESTING LINES
Pressure Test	08/08/2010 13:08		0.5				3600.0	NO LEAKS, KICK OUTS SET TO 3000 PSI FOR TEST.
Pump Spacer 1	08/08/2010 13:14		2	20			16.0	FRESH WATER
Pump Lead Cement	08/08/2010 13:23		6	231.2			130.0	550 SKS VARICEM CMT TO BE MIXED AT 12.3 PPG, 2.36 YIELD, 13.63 GAL/SK, CMT TO BE WEIGHED VIA PRESSURE BALANCED MUD SCALES WET AND DRY SAMPLES SUBMITTED.
Pump Tail Cement	08/08/2010 14:04		5	63.6			140.0	250 SKS VERSACEM CMT TO BE MIXED AT 14.2 PPG, 1.43 YIELD, 6.8 GAL/SK, CMT TO BE WEIGHED VIA PRESSURE BALANCED MUD SCALES, WET AND DRY SAMPLES SUBMITTED,
Shutdown	08/08/2010 14:18							
Drop Plug	08/08/2010 14:19							PLUG LAUNCHED
Pump Displacement	08/08/2010 14:20		7	196			356.0	FRESH WATER
Cement Returns to Surface	08/08/2010 14:38		7	140			570.0	60 BBLS CEMENT RETURNED TO PIT. POST JOB CEMENT FELL BACK 60 FT.

Activity Description	Date/Time	Cht #	Rate bbl/ min	Volume bbl		Pressure psig		Comments
				Stage	Total	Tubing	Casing	
Slow Rate	08/08/2010 14:44		2	186			700.0	10 BBLS PRIOR TO CALCULATED DISPLACEMENT
Bump Plug	08/08/2010 14:48		2	196			1200.0	PLUG LANDED
Check Floats	08/08/2010 14:50							FLOATS HOLDING, 1 BBL BACK
End Job	08/08/2010 14:52							THANK YOU FOR USING HES FROM MARK PHILLIPS AND CREW
Post-Job Safety Meeting (Pre Rig-Down)	08/08/2010 15:15							ALL HES EMPLOYEES, HES TO STANDBY FOR 1 HR PER CO REP POST BUMPING PLUG TO SEE IF CEMENT FALLS BACK. PER BLM IF CMT FALLS BACK MORE THEN 10 FT HES TO PUMP TOP OUT.
Start Job	08/08/2010 16:13							START TOP OUT JOB
Pump Water	08/08/2010 16:14		0.8	2		8.0		FRESH WATER TO CLEAR 1 " TBG
Pump Cap Cement	08/08/2010 16:15		1.8	18		33.0		CEMENT RETURNED TO SURFACE. CEMENT DID NOT FALL BACK, BLM REP APPROVED, JOB COMPLETE.
Pump Water	08/08/2010 16:26		0.8	1		18.0		FRESH WATER TO CLEAN LINES
End Job	08/08/2010 16:27							
Rig-Down Equipment	08/08/2010 18:30							
Pre-Convoy Safety Meeting	08/08/2010 19:30							ALL HES EMPLOYEES
Crew Leave Location	08/08/2010 20:00							LOCATION CLEAN

# PATARA OIL & GAS LLC

## ANDYS MESA #76 SURFACE



Customer: PATARA OIL AND GAS  
 Well Description: ANDYS MESA # 76  
 Company Rep: LEE GIRNOT

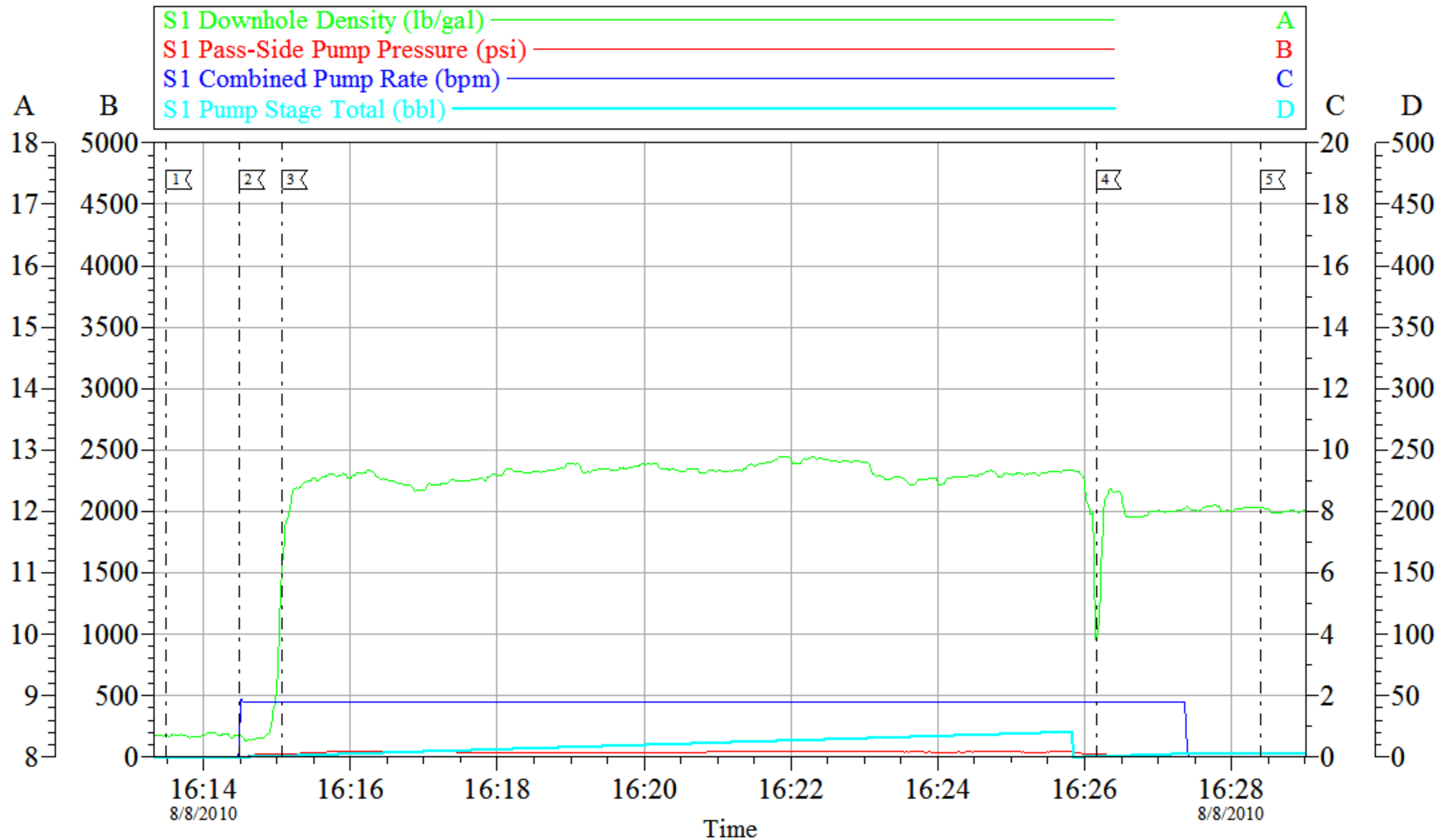
Job Date: 08-Aug-2010  
 Job Type: SURFACE  
 Cement Supervisor: MARK PHILLIPS

Sales Order #: 7545794  
 ADC Used: YES  
 Elite #2: JESSE HAYES

OptiCem v6.4.5  
 08-Aug-10 15:19

# PATARA OIL AND GAS LLC

## TOP OUT JOB



Local Event Log					
1	START JOB	16:13:30	2	PUMP H2O	16:14:29
			3	PUMP CEMENT	16:15:04
4	PUMP H2O	16:26:09	5	END JOB	16:28:24

Customer: PATARA  
 Well Description: ANDYS MESA  
 Company Rep: LEE GIRNOT

Job Date: 08-Aug-2010  
 Job Type: TOP OUT  
 Cement Supervisor: MARK PHILLIPS

Sales Order #: 7545794  
 ADC Used: NO  
 Elite #2: JESSE HAYES

OptiCem v6.4.5  
 08-Aug-10 17:12