
PATARA OIL AND GAS LLC

**ANDYS MESA 76
ANDYS MESA
San Miguel County , Colorado**

Cement Production Casing **22-Aug-2010**

Post Job Report

The Road to Excellence Starts with Safety

Sold To #: 356856		Ship To #: 2799738		Quote #:		Sales Order #: 7582952							
Customer: PATARA OIL AND GAS LLC				Customer Rep: Risen, Richard									
Well Name: ANDYS MESA			Well #: 76		API/UWI #: 05-113-06251								
Field: ANDYS MESA		City (SAP): SLICK ROCK		County/Parish: San Miguel		State: Colorado							
Lat: N 38.056 deg. OR N 38 deg. 3 min. 20.124 secs.				Long: W 108.651 deg. OR W -109 deg. 20 min. 55.385 secs.									
Contractor: L&W Drilling			Rig/Platform Name/Num: L&W #1										
Job Purpose: Cement Production Casing													
Well Type: Development Well				Job Type: Cement Production Casing									
Sales Person: DUNNING, DUSTIN			Srvc Supervisor: MAIN, CHAD			MBU ID Emp #: 335770							
Job Personnel													
HES Emp Name	Exp Hrs	Emp #	HES Emp Name	Exp Hrs	Emp #	HES Emp Name	Exp Hrs	Emp #					
ANDERSON, ADAM S		456683	BROWN, TRAVIS A		396848	BRUN, JUSTIN M		459269					
DOUT, JACOB J		430298	KUKUS, CRAIG A		369124	LUNCEFORD, STEVEN John		457512					
LYNGSTAD, FREDRICK D		403742	MAIN, CHAD R		335770								
Equipment													
HES Unit #	Distance-1 way	HES Unit #	Distance-1 way	HES Unit #	Distance-1 way	HES Unit #	Distance-1 way						
10295581	145 mile	10551730C	145 mile	10804487	145 mile	10951244	145 mile						
11018454	145 mile	11021972	145 mile	11027039	145 mile								
Job Hours													
Date	On Location Hours	Operating Hours	Date	On Location Hours	Operating Hours	Date	On Location Hours	Operating Hours					
TOTAL			Total is the sum of each column separately										
Job				Job Times									
Formation Name					Date	Time	Time Zone						
Formation Depth (MD)	Top	Bottom		Called Out	21 - Aug - 2010	15:00	MST						
Form Type	BHST		201 degF	On Location	21 - Aug - 2010	20:00	MST						
Job depth MD	7118. ft	Job Depth TVD	7118. ft	Job Started	21 - Aug - 2010	22:38	MST						
Water Depth		Wk Ht Above Floor	2. ft	Job Completed	22 - Aug - 2010	00:09	MST						
Perforation Depth (MD)	From	To		Departed Loc	22 - Aug - 2010	02:00	MST						
Well Data													
Description	New / Used	Max pressure psig	Size in	ID in	Weight lbm/ft	Thread	Grade	Top MD ft	Bottom MD ft	Top TVD ft	Bottom TVD ft		
Tools and Accessories													
Type	Size	Qty	Make	Depth	Type	Size	Qty	Make	Depth	Type	Size	Qty	Make
Guide Shoe					Packer					Top Plug			
Float Shoe					Bridge Plug					Bottom Plug			
Float Collar					Retainer					SSR plug set			
Insert Float										Plug Container			
Stage Tool										Centralizers			
Miscellaneous Materials													
Gelling Agt		Conc		Surfactant		Conc		Acid Type		Qty		Conc	%
Treatment Fld		Conc		Inhibitor		Conc		Sand Type		Size		Qty	

Fluid Data									
Stage/Plug #: 1									
Fluid #	Stage Type	Fluid Name	Qty	Qty uom	Mixing Density lbm/gal	Yield ft ³ /sk	Mix Fluid Gal/sk	Rate bbl/min	Total Mix Fluid Gal/sk
1	KCL Spacer w/Clayfix		20.00	bbl	8.4	.0	.0	5.0	
	0.1 gal/bbl	CLAYFIX II, HALTANK (100003729)							
	5 lbm/bbl	POTASSIUM CHLORIDE 5% (100001585)							
2	Mud Flush III	MUD FLUSH III - SBM (528788)	30.00	bbl	8.4	.0	.0	5.0	
3	KCL Spacer w/Clayfix		20.00	bbl	8.4	.0	.0	5.0	
	0.1 gal/bbl	CLAYFIX II, HALTANK (100003729)							
	5 lbm/bbl	POTASSIUM CHLORIDE 5% (100001585)							
4	Tail Cement	HALCEM (TM) SYSTEM (452986)	930.0	sacks	12.5	1.9	9.52	5.0	9.52
	9.52 Gal	FRESH WATER							
5	KCL Displacement		163.00	bbl	8.4	.0	.0	5.0	
	5 lbm/bbl	POTASSIUM CHLORIDE 5% (100001585)							
	0.1 gal/bbl	CLAYFIX II, HALTANK (100003729)							
Calculated Values		Pressures		Volumes					
Displacement		Shut In: Instant		Lost Returns		Cement Slurry		Pad	
Top Of Cement		5 Min		Cement Returns		Actual Displacement		Treatment	
Frac Gradient		15 Min		Spacers		Load and Breakdown		Total Job	
Rates									
Circulating		Mixing		Displacement		Avg. Job			
Cement Left In Pipe	Amount	0 ft	Reason	Shoe Joint					
Frac Ring # 1 @	ID	Frac ring # 2 @	ID	Frac Ring # 3 @	ID	Frac Ring # 4 @	ID		
The Information Stated Herein Is Correct				Customer Representative Signature					

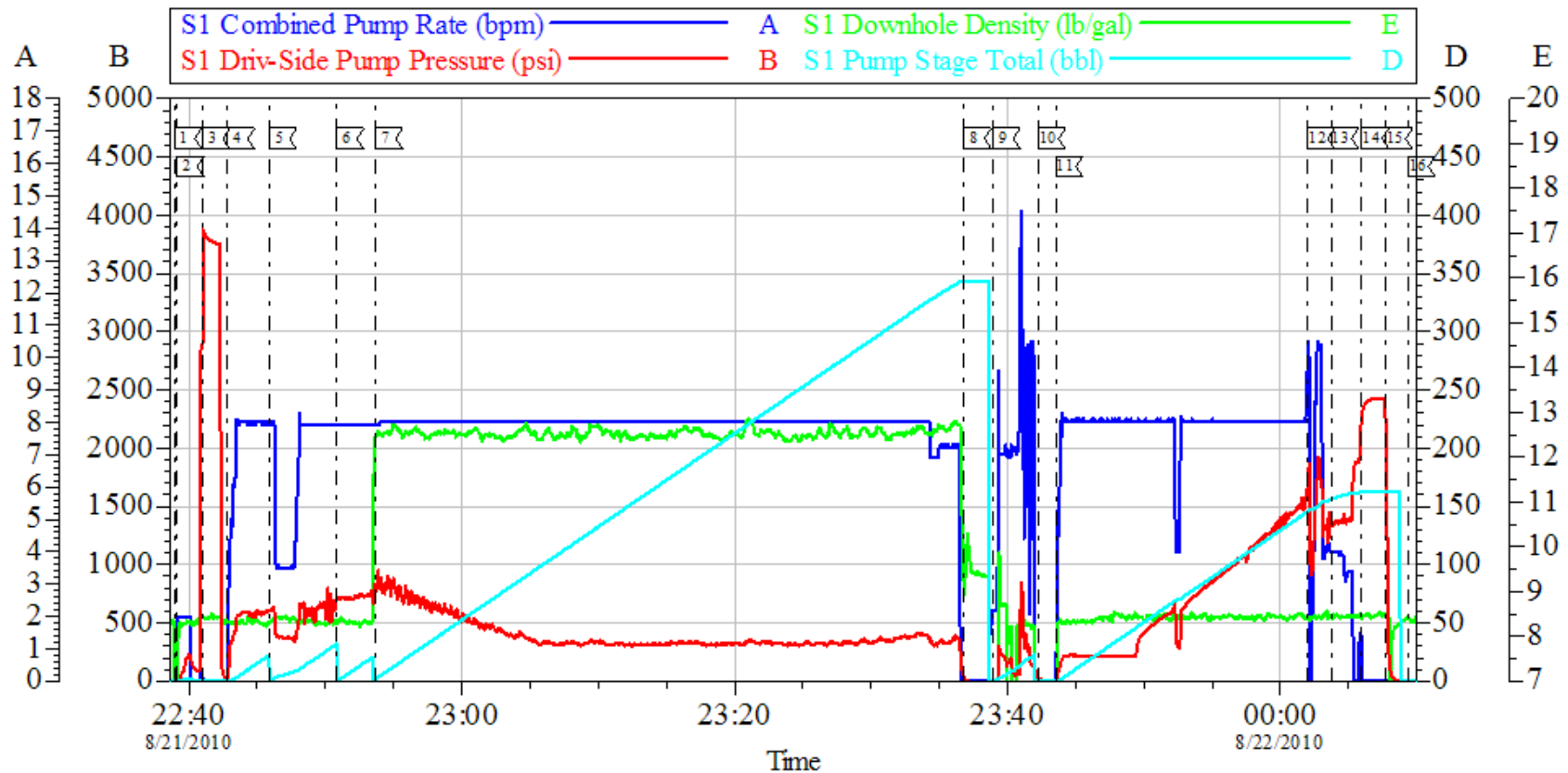
The Road to Excellence Starts with Safety

Sold To #: 356856		Ship To #: 2799738		Quote #:		Sales Order #: 7582952	
Customer: PATARA OIL AND GAS LLC				Customer Rep: Risen, Richard			
Well Name: ANDYS MESA			Well #: 76		API/UWI #: 05-113-06251		
Field: ANDYS MESA		City (SAP): SLICK ROCK		County/Parish: San Miguel		State: Colorado	
Legal Description:							
Lat: N 38.056 deg. OR N 38 deg. 3 min. 20.124 secs.				Long: W 108.651 deg. OR W -109 deg. 20 min. 55.385 secs.			
Contractor: L&W Drilling			Rig/Platform Name/Num: L&W #1				
Job Purpose: Cement Production Casing						Ticket Amount:	
Well Type: Development Well			Job Type: Cement Production Casing				
Sales Person: DUNNING, DUSTIN			Srv Supervisor: MAIN, CHAD			MBU ID Emp #: 335770	

Activity Description	Date/Time	Cht #	Rate bbl/min	Volume bbl		Pressure psig		Comments
				Stage	Total	Tubing	Casing	
Depart Yard Safety Meeting	08/21/2010 15:00							ALL HES PERSONNEL
Depart from Service Center or Other Site	08/21/2010 15:10							ONE ELITE, ONE BULK TRUCK, ONE BIN, ONE WINCH, AND ONE CEMENTERS PICK UP
Arrive At Loc	08/21/2010 20:00							TD 7118' CSG 7092.64' 5.5" 17#SJ 44' SURFACE CSG 2575' MUD 9.2 #
Assessment Of Location Safety Meeting	08/21/2010 20:10							RIG WAS RUNNING CASING WHEN HES ARRIVED
Pre-Rig Up Safety Meeting	08/21/2010 20:20							ALL HES PERSONNEL
Rig-Up Equipment	08/21/2010 20:30							HES WAS TO SUPPLY KCL FOR SPACERS AND FLUSH NOT DISPLACEMENT ONLY CHARGED 1 50 # SK OF KCL NO DERRICK CHARGE OR ADD HRS
Rig-Up Completed	08/21/2010 21:50							
Pre-Job Safety Meeting	08/21/2010 22:20							ALL LOCATION PERSONNEL
Start Job	08/21/2010 22:38							RIG CIRCULATED ON WELL FOR 2 HRS
Pressure Test	08/21/2010 22:41						3500.0	HELD PSI FOR 2 MINS
Pump Spacer 1	08/21/2010 22:42		8	20			570.0	KCL AND CLAYFIX HES HAD FULL CIRCULATION ENTIRE JOB
Pump Spacer 2	08/21/2010 22:45		8	30			605.0	MUD FLUSH III

Activity Description	Date/Time	Cht #	Rate bbl/min	Volume bbl		Pressure psig		Comments
				Stage	Total	Tubing	Casing	
Pump Spacer 2	08/21/2010 22:50		8	20			715.0	KCL AND CLAYFIX
Pump Tail Cement	08/21/2010 22:53		8	314.7			835.0	930 SKS AT 12.5 PPG 1.9 FT3/SK 9.52 GAL/SK TOP OF CEMENT 95.64' ON TRUE HOLE
Shutdown	08/21/2010 23:36							
Clean Lines	08/21/2010 23:38			20				
Drop Plug	08/21/2010 23:42							BREAK OFF SWAGE LOAD PLUG
Pump Displacement	08/21/2010 23:43		8	163.5			235.0	DISPLACE WITH KCL SUPPLIED BY PATARA
Bump Plug	08/22/2010 00:05		4	163.5			1439.0	1000 PSI OVER
Check Floats	08/22/2010 00:07						2397.0	FLOATS HELD
End Job	08/22/2010 00:09							HES BROUGHT SOME TRACES OF MUD FLUSH TO SURFACE
Safety Meeting - Pre Rig-Down	08/22/2010 00:15							ALL HES PERSONNEL
Rig-Down Equipment	08/22/2010 00:25							
Rig-Down Completed	08/22/2010 01:30							
Depart Location Safety Meeting	08/22/2010 01:45							ALL HES PERSONNEL
Depart from Service Center or Other Site	08/22/2010 02:00							LOCATION LEFT CLEANER THAN WHEN HES ARRIVED
Other	08/22/2010 02:01							THANK YOU FOR USING HALLIBURTON GRAND JUNCTION CHAD MAIN AND CREW

PATARA PRODUCTION



Local Event Log

1 STARTJOB	8/21/2010 22:38:57	2 FILL LINES	8/21/2010 22:39:08	3 PRESSURE TEST	8/21/2010 22:41:00
4 PUMP KCL SPACER	8/21/2010 22:42:49	5 PUMP MUD FLUSH	8/21/2010 22:45:54	6 PUMP KCL SPACER	8/21/2010 22:50:50
7 PUMP TAIL CEMENT	8/21/2010 22:53:40	8 SHUTDOWN	8/21/2010 23:36:50	9 WASH PUMPS/LINES	8/21/2010 23:38:57
10 DROP PLUG	8/21/2010 23:42:16	11 STARTDISPLACEMENT	8/21/2010 23:43:33	12 INCREASED RATE	8/22/2010 00:02:00
13 SLOWED RATE	8/22/2010 00:03:45	14 BUMP PLUG	8/22/2010 00:05:58	15 CHECK FLOATS	8/22/2010 00:07:43
16 END JOB	8/22/2010 00:09:22				

Customer: PATARA
Well Description: ANDY'S MESA 76
Company Rep: RICHARD REEN

Job Date: 21-Aug-2010
Job Type: PRODUCTION
Cement Supervisor: CHAD MAIN

Sales Order #: 7582952
ADC Used: YES
Elite #: 2/TRAVERS BROWN

OptiCem v6.4.2
22-Aug-10 00:18