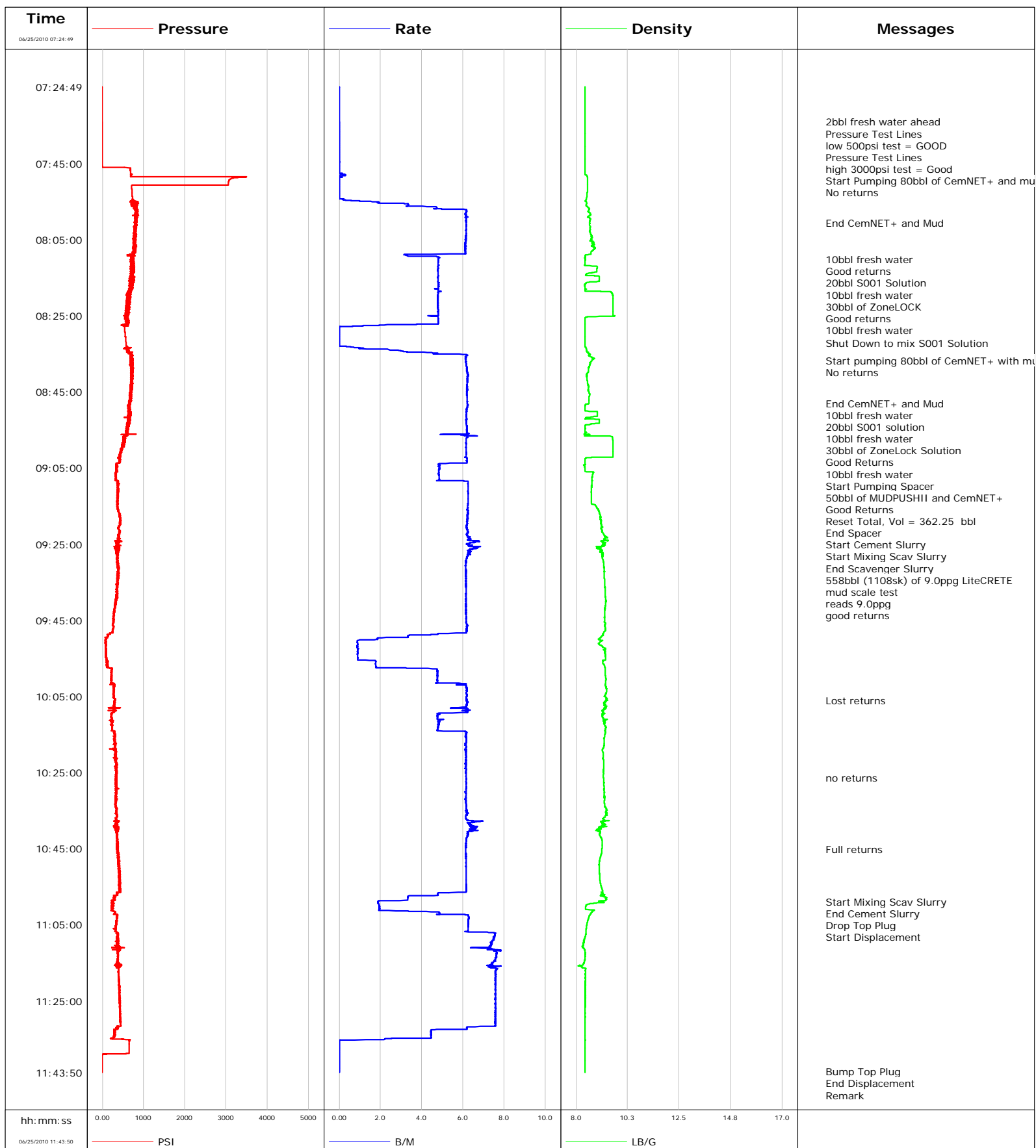


Well SGU 8506D-36
Field Story Gulch
Engineer Dustin Krueger
Country United States

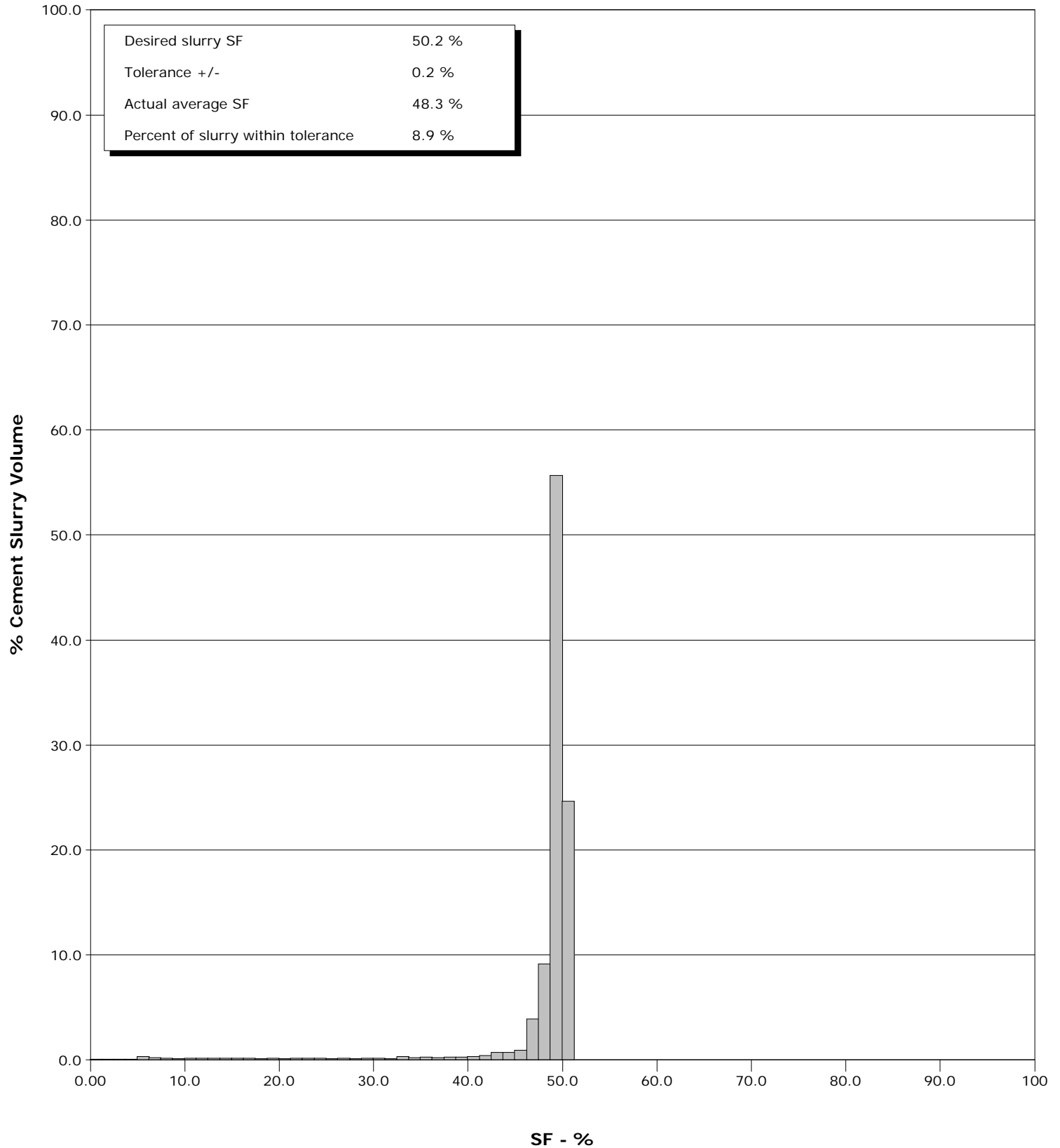
Client Encana oil Gas
SIR No. 000378988
Job Type 3030ft 9 5/8 surface
Job Date 06-25-2010



Well SGU 8506D-36
Field Story Gulch
Engineer Dustin Krueger
Country United States

Client Encana oil Gas
SIR No. 000378988
Job Type 3030ft 9 5/8 surface
Job Date 06-25-2010

Cement Slurry - 06/25/2010 09:14:14 to 06/25/2010 10:59:01





Cementing Service Report

				Customer Encana oil & Gas		Job Number 000378988		
Well SGU 8506D-36 SGU8506D-36 B36 496,1			Location (legal) B36 496,1		Schlumberger Location Grand Junction		Job Start Jun/25/2010	
Field Story Gulch		Formation Name/Type Shale		Deviation 0 deg	Bit Size 14.8 in	Well MD 3030.0 ft		Well TVD 3030.0 ft
County Garfield		State/Province Colorado		BHP	BHST 115 degF	BHCT 95 degF	Pore Press. Gradient	
Well Master 0631190346		API /UWI						
Rig Name Patterson 308	Drilled For Gas	Service Via Land	Casing/Liner					
			Depth, ft	Size, in	Weight, lb/ft	Grade	Thread	
Offshore Zone	Well Class New	Well Type Development	120.0	20.000	94.0	N/A	N/A	
			3030.0	9.630	36.0	J55	8RD	
Drilling Fluid Type Spud Mud		Max. Density 9.00 lb/gal	Plastic Viscosity 20.000 cP	Tubing/Drill Pipe				
				Depth,	Size,	Weight,	Grade	Thread
Service Line Cementing	Job Type 3030ft 9 5/8 surface							
Max. Allowed Tub. Press 3500 psi	Max. Allowed Ann. Press 500 psi	WH Connection Single Cement head	Perforations/Open Hole					
			Top,	Bottom,		No. of Shots	Total Interval	
							Diameter	
Service Instructions Cement 9 5/8" Surface Casing @ 3000ft w/ 50% Excess with: 80bbl CemNET Plus 10bbl water 20bbl S001 solution 10bbl water 30bbl Zonelock 10bbl water 80bbl CemNET plus 10bbl water 20bbl S001 solution								
Casing/Tubing Secured <input checked="" type="checkbox"/>	1 Hole Vol. Circulated prior to Cement <input checked="" type="checkbox"/>			Casing Tools		Squeeze Job		
Lift Pressure 300 psi				Shoe Type Guide		Squeeze Type		
Pipe Rotated <input type="checkbox"/>	Pipe Reciprocated <input type="checkbox"/>			Shoe Depth 3030.0 ft		Tool Type		
No. Centralizers 24	Top Plugs 1	Bottom Plugs		Stage Tool Type		Tool Depth		
Cement Head Type Single				Stage Tool Depth		Tail Pipe Size		
Job Scheduled For Jun/25/2010 05:00	Arrived on Location Jun/25/2010 04:45	Leave Location Jun/25/2010 12:00		Collar Type Float		Tail Pipe Depth		
				Collar Depth 2984.0 ft		Sqz. Total Vol.		
Date	Time 24-hr clock	Treating Pressure PSI	Flow Rate B/M	Density LB/G	Volume BBL	Message		
06/25/2010	07:24:25					Started Acquisition		
06/25/2010	07:24:28					Pre Job Safty Meeting		
06/25/2010	07:24:49	-3	0.0	8.39	0.0			
06/25/2010	07:34:02					2bbl fresh water ahead		
06/25/2010	07:34:02	-2	0.0	8.39	0.0			
06/25/2010	07:34:16					Pressure Test Lines		
06/25/2010	07:34:16	-2	0.0	8.39	0.0			
06/25/2010	07:34:18					low 500psi test = GOOD		
06/25/2010	07:34:18	-2	0.0	8.39	0.0			
06/25/2010	07:34:21					Pressure Test Lines		
06/25/2010	07:34:21	-2	0.0	8.39	0.0			
06/25/2010	07:34:24					high 3000psi test = Good		
06/25/2010	07:34:24	-2	0.0	8.39	0.0			
06/25/2010	07:34:25	-2	0.0	8.39	0.0			
06/25/2010	07:35:00					Start Pumping 80bbl of CemNET+ and mud		
06/25/2010	07:35:00	-2	0.0	8.39	0.0			
06/25/2010	07:35:01					No returns		
06/25/2010	07:35:01	-2	0.0	8.39	0.0			
06/25/2010	07:39:25	-2	0.0	8.39	0.0			
06/25/2010	07:44:25	-2	0.0	8.39	0.0			
06/25/2010	07:49:25	3074	0.0	8.50	0.2			

Well SGU 8506D-36 SGU8506D-36 B36 496,1			Field Story Gulch	Job Start Jun/25/2010	Customer Encana oil & Gas	Job Number 000378988
Date	Time 24-hr clock	Treating Pressure PSI	Flow Rate B/M	Density LB/G	Volume BBL	Message
06/25/2010	07:59:25	800	6.2	8.60	22.3	
06/25/2010	08:00:29					End CemNET+ and Mud
06/25/2010	08:00:29	791	6.2	8.58	28.9	
06/25/2010	08:04:25	794	6.1	8.72	53.1	
06/25/2010	08:09:25	770	4.3	8.41	82.1	
06/25/2010	08:10:10					10bbl fresh water
06/25/2010	08:10:10	714	4.8	8.41	85.7	
06/25/2010	08:10:55					Good returns
06/25/2010	08:10:55	758	4.8	8.39	89.3	
06/25/2010	08:11:52					20bbl S001 Solution
06/25/2010	08:11:52	705	4.8	8.43	93.9	
06/25/2010	08:14:25	754	4.8	8.43	106.1	
06/25/2010	08:16:39					10bbl fresh water
06/25/2010	08:16:39	648	4.8	8.41	116.8	
06/25/2010	08:18:31					30bbl of ZoneLOCK
06/25/2010	08:18:31	703	4.8	8.39	125.8	
06/25/2010	08:19:25	688	4.8	9.60	130.1	
06/25/2010	08:19:56					Good returns
06/25/2010	08:19:56	628	4.8	9.61	132.6	
06/25/2010	08:24:25	623	4.8	9.62	154.0	
06/25/2010	08:25:21					10bbl fresh water
06/25/2010	08:25:21	597	4.8	8.47	158.5	
06/25/2010	08:29:25	548	0.0	8.39	168.7	
06/25/2010	08:32:07					Shut Down to mix S001 Solution
06/25/2010	08:32:07	573	0.0	8.39	168.7	
06/25/2010	08:34:25	639	3.2	8.47	171.1	
06/25/2010	08:36:44					Start pumping 80bbl of CemNET+ with mud
06/25/2010	08:36:44	698	6.1	8.70	184.0	
06/25/2010	08:37:49					No returns
06/25/2010	08:37:49	693	6.1	8.60	190.7	
06/25/2010	08:39:25	700	6.2	8.54	200.5	
06/25/2010	08:44:25	708	6.2	8.53	231.6	
06/25/2010	08:47:59					End CemNET+ and Mud
06/25/2010	08:47:59					10bbl fresh water
06/25/2010	08:47:59	680	6.2	8.57	253.7	
06/25/2010	08:49:25	663	6.2	8.39	262.6	
06/25/2010	08:49:54					20bbl S001 solution
06/25/2010	08:49:54	664	6.2	8.39	265.6	
06/25/2010	08:53:33					10bbl fresh water
06/25/2010	08:53:33	655	6.2	8.62	288.1	
06/25/2010	08:54:25	590	6.2	8.40	293.4	
06/25/2010	08:56:41					30bbl of ZoneLock Solution
06/25/2010	08:56:41	538	6.2	9.50	307.4	
06/25/2010	08:58:32					Good Returns
06/25/2010	08:58:32	502	6.2	9.62	318.8	
06/25/2010	08:59:25	516	6.2	9.62	324.2	
06/25/2010	09:03:18					10bbl fresh water
06/25/2010	09:03:18	407	6.2	8.40	348.2	
06/25/2010	09:04:25	341	4.9	8.37	354.3	
06/25/2010	09:05:46					Start Pumping Spacer
06/25/2010	09:05:46	341	4.8	8.40	360.8	
06/25/2010	09:06:00					50bbl of MUDPUSHII and CemNET+
06/25/2010	09:06:00					Good Returns
06/25/2010	09:06:00	373	4.8	8.46	361.9	

Well SGU 8506D-36 SGU8506D-36 B36 496,1			Field Story Gulch	Job Start Jun/25/2010	Customer Encana oil & Gas	Job Number 000378988
Date	Time 24-hr clock	Treating Pressure PSI	Flow Rate B/M	Density LB/G	Volume BBL	Message
06/25/2010	09:06:04	332	4.9	8.72	362.2	
06/25/2010	09:09:25	374	6.3	8.69	379.9	
06/25/2010	09:14:12					End Spacer
06/25/2010	09:14:12	353	6.2	8.67	409.8	
06/25/2010	09:14:14					Start Cement Slurry
06/25/2010	09:14:14	352	6.3	8.67	410.0	
06/25/2010	09:14:15					Start Mixing Scav Slurry
06/25/2010	09:14:15	352	6.3	8.67	410.1	
06/25/2010	09:14:25	360	6.3	8.68	411.2	
06/25/2010	09:19:25	422	6.2	9.09	442.3	
06/25/2010	09:24:25	345	6.6	9.15	473.5	
06/25/2010	09:24:48					End Scavenger Slurry
06/25/2010	09:24:48	353	6.3	9.21	476.0	
06/25/2010	09:25:00					558bbl (1108sk) of 9.0ppg LiteCRETE
06/25/2010	09:25:00					mud scale test
06/25/2010	09:25:00	369	6.2	9.23	477.3	
06/25/2010	09:25:01					reads 9.0ppg
06/25/2010	09:25:01					good returns
06/25/2010	09:25:01	362	6.2	9.19	477.4	
06/25/2010	09:29:25	352	6.1	9.19	505.1	
06/25/2010	09:34:25	373	6.1	9.25	535.8	
06/25/2010	09:39:25	353	6.1	9.30	566.6	
06/25/2010	09:44:25	267	6.2	9.25	597.3	
06/25/2010	09:49:25	118	3.3	9.11	626.1	
06/25/2010	09:54:25	95	0.9	9.29	631.6	
06/25/2010	09:59:25	223	4.8	9.28	644.8	
06/25/2010	10:04:25	262	6.2	9.31	672.5	
06/25/2010	10:06:01					Lost returns
06/25/2010	10:06:01	286	6.2	9.33	682.4	
06/25/2010	10:09:25	225	5.0	9.21	703.2	
06/25/2010	10:14:25	274	6.2	9.28	727.5	
06/25/2010	10:19:25	333	6.1	9.16	758.3	
06/25/2010	10:24:25	348	6.2	9.20	789.0	
06/25/2010	10:26:24					no returns
06/25/2010	10:26:24	339	6.2	9.19	801.2	
06/25/2010	10:29:25	347	6.1	9.22	819.8	
06/25/2010	10:34:25	330	6.2	9.32	850.6	
06/25/2010	10:39:25	388	6.7	9.02	881.9	
06/25/2010	10:44:25	341	6.1	9.14	913.2	
06/25/2010	10:45:13					Full returns
06/25/2010	10:45:13	362	6.1	9.13	918.1	
06/25/2010	10:49:25	417	6.1	9.01	943.9	
06/25/2010	10:54:25	429	6.2	9.08	974.7	
06/25/2010	10:59:00					Start Mixing Scav Slurry
06/25/2010	10:59:00	250	1.9	9.14	996.8	
06/25/2010	10:59:01					End Cement Slurry
06/25/2010	10:59:01	235	1.9	9.14	996.9	
06/25/2010	10:59:25	223	1.9	8.80	997.6	
06/25/2010	11:02:19					Drop Top Plug
06/25/2010	11:02:19					Start Displacement
06/25/2010	11:02:19	338	4.8	8.64	1005.6	
06/25/2010	11:04:25	352	6.3	8.50	1018.7	
06/25/2010	11:09:25	377	7.4	8.35	1053.0	
06/25/2010	11:14:25	367	7.5	8.38	1090.4	

Well SGU 8506D-36 SGU8506D-36 B36 496,1			Field Story Gulch		Job Start Jun/25/2010		Customer Encana oil & Gas		Job Number 000378988	
Date	Time 24-hr clock	Treating Pressure PSI		Flow Rate B/M	Density LB/G		Volume BBL	Message		
06/25/2010	11:24:25	431		7.6	8.41		1165.9			
06/25/2010	11:29:25	443		7.6	8.41		1203.8			
06/25/2010	11:34:25	282		4.5	8.40		1234.8			
06/25/2010	11:39:25	-4		0.0	8.41		1237.9			
06/25/2010	11:43:37							Bump Top Plug		
06/25/2010	11:43:37	-5		0.0	8.40		1237.9			
06/25/2010	11:43:39							End Displacement		
06/25/2010	11:43:39	-5		0.0	8.40		1237.9			
06/25/2010	11:43:42							Remark		
06/25/2010	11:43:42	-5		0.0	8.40		1237.9			

Post Job Summary

Average Pump Rates,					Volume of Fluid Injected, bbl					
Slurry	N2	Mud	Maximum Rate		Total Slurry 558.0	Mud 160.0	Spacer 100.0	N2		
Treating Pressure Summary, psi					Breakdown Fluid					
Maximum 3000	Final 360	Average 250	Bump Plug to 700	Breakdown 275	Type FreshWater	Volume 873.0 bbl		Density 8.34 lb/gal		
Avg. N2 Percent		Designed Slurry Volume 558.0 bbl		Displacement 230.7 bbl		Mix Water Temp 70 degF		Cement Circulated to Surface? <input checked="" type="checkbox"/>		Volume 88.0 bbl
								Washed Thru Perfs <input type="checkbox"/>		To
Customer or Authorized Representative Ira Cox				Schlumberger Supervisor Dustin Krueger				Circulation Lost <input checked="" type="checkbox"/>		Job Completed <input checked="" type="checkbox"/>
								-		-