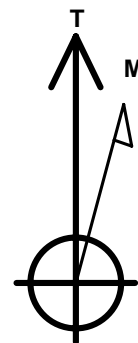
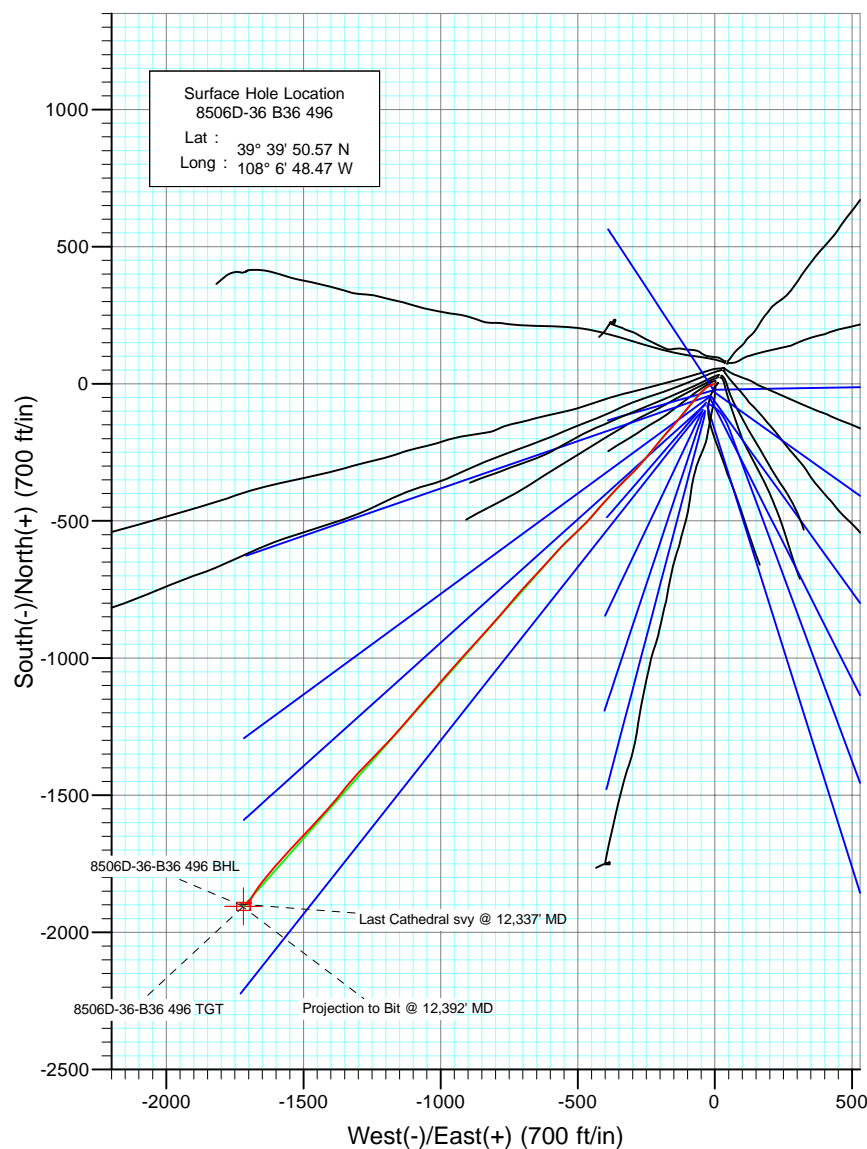
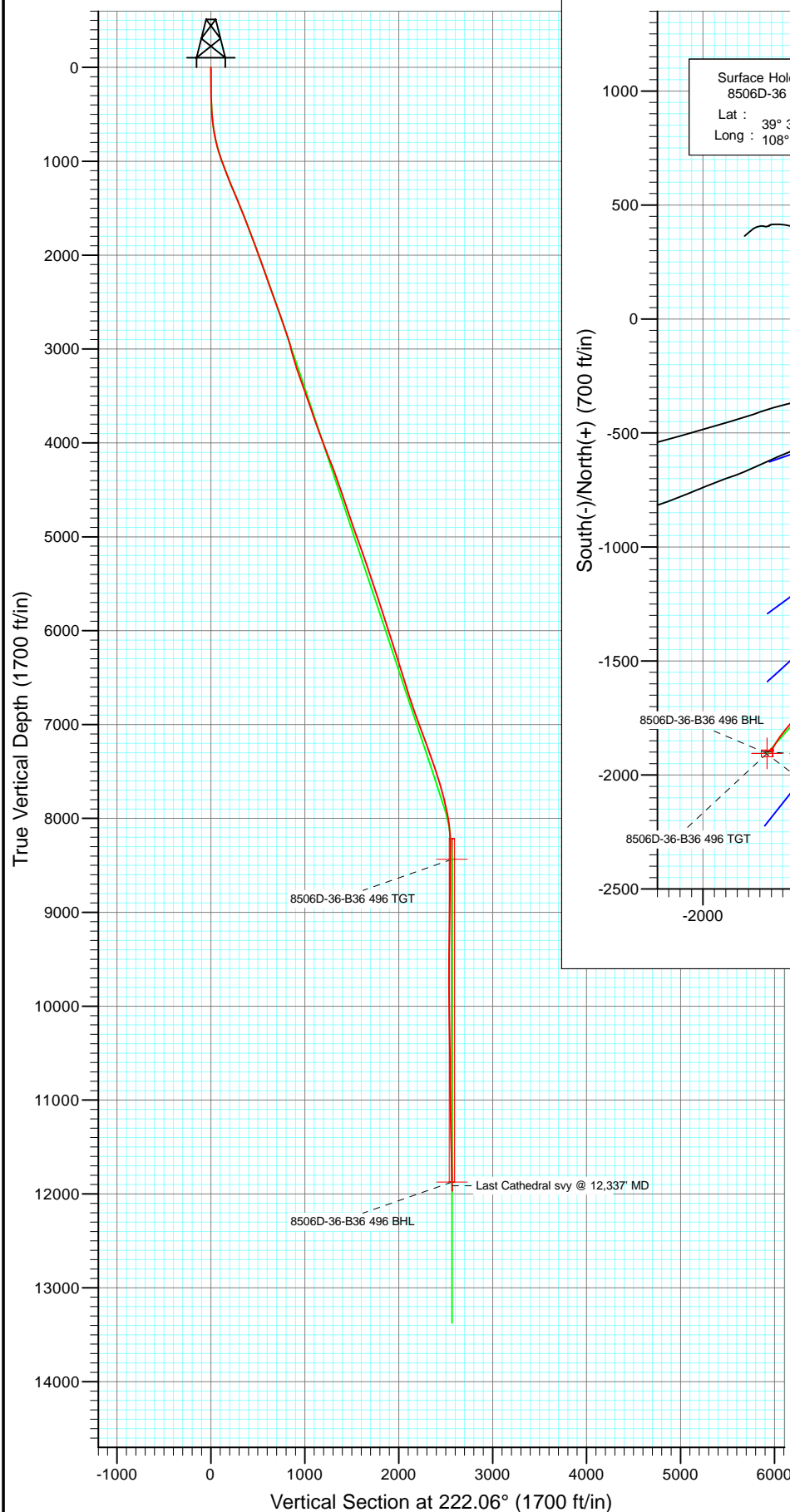




Project: Story Gulch
 Site: S36-T4S-R96W (B36 496)
 Well: 8506D-36 B36 496
 Wellbore: DD
 Design: Final



Azimuths to True North
 Magnetic North: 10.53°

Magnetic Field
 Strength: 52436.8nT
 Dip Angle: 65.89°
 Date: 6/18/2010
 Model: IGRF200510

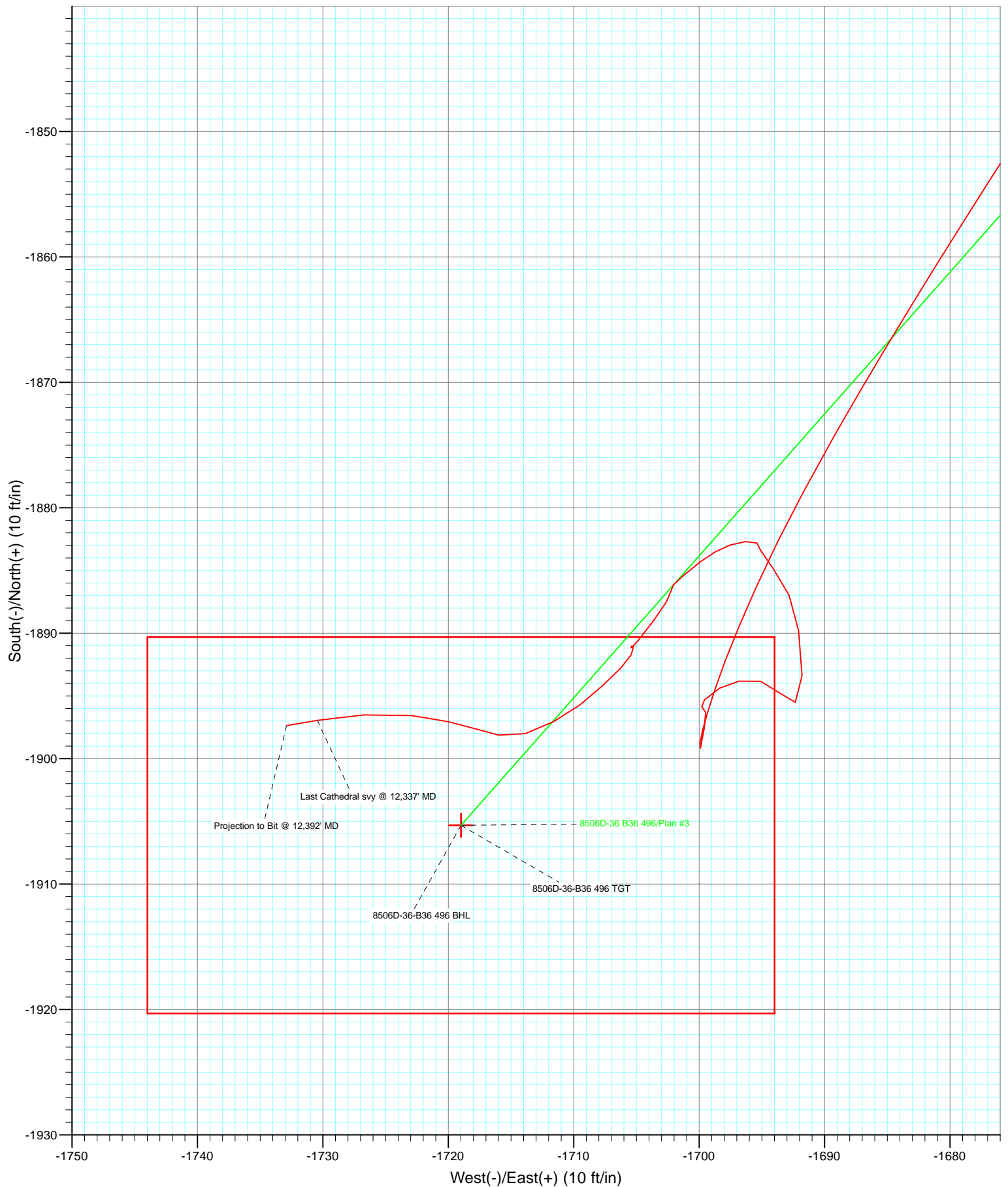
DD
 8506D-36 B36 496
 105262, BH

KBE @ 8374.0ft (Patterson 308)
 North American Datum 1983
 Well 8506D-36 B36 496, True North

Type	Target	Target	Azimuth	Origin	Type	N/S	E/W	From	TVD
Target	8506D-36-B36 496 BHL	222.06	222.06	Slot	0.0	0.0	0.0	0.0	0.0
Name	TVD	+N/-S	+E/-W	Latitude	Longitude				
8506D-36-B36 496 BHL	11874.0	-1905.3	-1719.039° 39'	31.74 N	108° 7' 10.45 W				



Project: Story Gulch
Site: S36-T4S-R96W (B36 496)
Well: 8506D-36 B36 496
Wellbore: DD
Design: Final



Cathedral Energy Services

Survey Report

Company:	EnCana Oil & Gas (USA) Inc	Local Co-ordinate Reference:	Well 8506D-36 B36 496
Project:	Story Gulch	TVD Reference:	KBE @ 8374.0ft (Patterson 308)
Site:	S36-T4S-R96W (B36 496)	MD Reference:	KBE @ 8374.0ft (Patterson 308)
Well:	8506D-36 B36 496	North Reference:	True
Wellbore:	DD	Survey Calculation Method:	Minimum Curvature
Design:	DD	Database:	EDM 5000.1 US Multi Users DB

Project	Story Gulch		
Map System:	US State Plane 1983	System Datum:	Mean Sea Level
Geo Datum:	North American Datum 1983		
Map Zone:	Colorado Central Zone		

Site		S36-T4S-R96W (B36 496)			
Site Position:		Northing:	1,677,422.27 ft	Latitude:	39° 39' 51.36 N
From:	Lat/Long	Easting:	2,264,394.80 ft	Longitude:	108° 6' 47.88 W
Position Uncertainty:	0.0 ft	Slot Radius:	13.200 in	Grid Convergence:	-1.65 °

Well	8506D-36 B36 496					
Well Position	+N/-S	0.0 ft	Northing:	1,677,343.78 ft	Latitude:	39° 39' 50.57 N
	+E/-W	0.0 ft	Easting:	2,264,346.16 ft	Longitude:	108° 6' 48.47 W
Position Uncertainty		0.0 ft	Wellhead Elevation:	ft	Ground Level:	8,352.0 ft

Wellbore	DD				
Magnetics	Model Name	Sample Date	Declination (°)	Dip Angle (°)	Field Strength (nT)
	IGRF200510	6/18/2010	10.53	65.89	52,437

Design	DD				
Audit Notes:					
Version:	1.0	Phase:	ACTUAL	Tie On Depth:	0.0
Vertical Section:	Depth From (TVD)	+N/-S	+E/-W	Direction	
	(ft)	(ft)	(ft)	(°)	
	0.0	0.0	0.0	222.06	

Survey Program	Date	8/18/2010			
From (ft)	To (ft)	Survey (Wellbore)	Tool Name	Description	
171.0	2,990.0	Survey #1 (DD)	MWD	Geolink MWD	
3,084.0	12,392.0	Survey #2 (DD)	MWD	Geolink MWD	

Survey									
Measured Depth (ft)	Inclination (°)	Azimuth (°)	Vertical Depth (ft)	+N/-S (ft)	+E/-W (ft)	Vertical Section (ft)	Dogleg Rate (°/100ft)	Build Rate (°/100ft)	Formations / Comments
0.0	0.00	0.00	0.0	0.0	0.0	0.0	0.00	0.00	
171.0	0.40	212.60	171.0	-0.5	-0.3	0.6	0.23	0.23	
202.0	0.60	240.30	202.0	-0.7	-0.5	0.8	0.99	0.65	
233.0	0.80	214.00	233.0	-0.9	-0.8	1.2	1.20	0.65	
263.0	1.10	207.50	263.0	-1.4	-1.0	1.7	1.06	1.00	
325.0	1.80	276.60	325.0	-1.8	-2.3	2.8	2.81	1.13	
356.0	2.10	261.20	356.0	-1.8	-3.3	3.6	1.94	0.97	
387.0	2.50	260.40	386.9	-2.0	-4.5	4.5	1.29	1.29	
417.0	3.20	254.80	416.9	-2.3	-6.0	5.8	2.51	2.33	
448.0	3.80	257.90	447.8	-2.8	-7.8	7.3	2.03	1.94	
479.0	4.50	254.60	478.8	-3.3	-10.0	9.2	2.38	2.26	
510.0	5.40	258.70	509.6	-3.9	-12.6	11.4	3.12	2.90	

Cathedral Energy Services

Survey Report

Company:	EnCana Oil & Gas (USA) Inc	Local Co-ordinate Reference:	Well 8506D-36 B36 496
Project:	Story Gulch	TVD Reference:	KBE @ 8374.0ft (Patterson 308)
Site:	S36-T4S-R96W (B36 496)	MD Reference:	KBE @ 8374.0ft (Patterson 308)
Well:	8506D-36 B36 496	North Reference:	True
Wellbore:	DD	Survey Calculation Method:	Minimum Curvature
Design:	DD	Database:	EDM 5000.1 US Multi Users DB

Survey

Measured Depth (ft)	Inclination (°)	Azimuth (°)	Vertical Depth (ft)	+N/-S (ft)	+E/-W (ft)	Vertical Section (ft)	Dogleg Rate (°/100ft)	Build Rate (°/100ft)	Formations / Comments
540.0	6.10	249.80	539.5	-4.8	-15.5	13.9	3.77	2.33	
571.0	7.00	241.70	570.3	-6.2	-18.7	17.2	4.15	2.90	
602.0	8.00	241.00	601.0	-8.2	-22.3	21.0	3.24	3.23	
633.0	8.90	240.40	631.7	-10.4	-26.2	25.3	2.92	2.90	
664.0	9.50	235.40	662.3	-13.0	-30.4	30.1	3.22	1.94	
694.0	10.10	235.60	691.8	-15.9	-34.6	35.0	2.00	2.00	
744.0	11.10	226.50	741.0	-21.7	-41.7	44.1	3.89	2.00	
790.0	12.50	221.00	786.0	-28.5	-48.2	53.5	3.90	3.04	
836.0	14.10	219.60	830.8	-36.6	-55.1	64.0	3.55	3.48	
882.0	15.90	222.40	875.2	-45.6	-62.9	75.9	4.22	3.91	
927.0	17.70	221.50	918.3	-55.2	-71.6	89.0	4.04	4.00	
973.0	19.20	218.80	961.9	-66.4	-80.9	103.5	3.75	3.26	
1,156.0	21.70	220.00	1,133.4	-115.7	-121.6	167.4	1.39	1.37	
1,202.0	21.60	220.00	1,176.1	-128.7	-132.5	184.3	0.22	-0.22	
1,248.0	21.20	220.20	1,219.0	-141.6	-143.3	201.1	0.88	-0.87	
1,340.0	23.10	221.50	1,304.2	-167.8	-166.0	235.8	2.13	2.07	
1,431.0	22.80	220.60	1,388.0	-194.6	-189.3	271.3	0.51	-0.33	
1,523.0	22.60	219.60	1,472.9	-221.7	-212.1	306.7	0.47	-0.22	
1,615.0	22.00	217.80	1,558.0	-249.0	-234.0	341.6	0.99	-0.65	
1,706.0	21.40	221.40	1,642.5	-274.9	-255.4	375.2	1.60	-0.66	
1,798.0	20.30	222.00	1,728.5	-299.3	-277.2	407.9	1.22	-1.20	
1,890.0	21.00	223.70	1,814.6	-323.1	-299.2	440.4	1.00	0.76	
1,981.0	19.80	226.60	1,899.9	-345.5	-321.7	472.0	1.72	-1.32	
2,073.0	19.80	223.40	1,986.4	-367.5	-343.7	503.1	1.18	0.00	
2,165.0	20.00	223.00	2,073.0	-390.3	-365.2	534.4	0.26	0.22	
2,256.0	19.90	223.40	2,158.5	-413.0	-386.4	565.5	0.19	-0.11	
2,348.0	19.90	221.70	2,245.0	-436.1	-407.6	596.8	0.63	0.00	
2,440.0	19.40	219.30	2,331.6	-459.6	-427.7	627.7	1.03	-0.54	
2,531.0	19.30	222.70	2,417.5	-482.3	-447.5	657.9	1.24	-0.11	
2,623.0	19.10	223.40	2,504.4	-504.4	-468.1	688.1	0.33	-0.22	
2,715.0	19.70	226.40	2,591.2	-526.1	-489.7	718.6	1.26	0.65	
2,806.0	19.90	226.50	2,676.8	-547.3	-512.0	749.3	0.22	0.22	
2,898.0	20.10	225.30	2,763.2	-569.2	-534.6	780.7	0.50	0.22	
2,990.0	18.40	223.20	2,850.1	-590.9	-555.8	811.0	1.99	-1.85	Last Cathedral Survey @ 2990' MD
3,084.0	15.60	223.00	2,940.0	-611.0	-574.6	838.5	2.98	-2.98	
3,176.0	14.90	222.00	3,028.7	-628.8	-590.9	862.7	0.81	-0.76	
3,268.0	15.50	221.00	3,117.5	-646.9	-606.9	886.8	0.71	0.65	
3,360.0	17.20	224.20	3,205.8	-665.9	-624.5	912.7	2.09	1.85	
3,451.0	20.30	223.80	3,292.0	-686.9	-644.8	942.0	3.41	3.41	
3,543.0	20.20	222.80	3,378.3	-710.1	-666.6	973.8	0.39	-0.11	
3,635.0	19.80	221.50	3,464.7	-733.4	-687.7	1,005.3	0.65	-0.43	
3,727.0	18.50	220.90	3,551.6	-756.1	-707.6	1,035.4	1.43	-1.41	
3,818.0	18.90	220.70	3,637.8	-778.2	-726.7	1,064.6	0.45	0.44	
3,910.0	19.10	220.10	3,724.8	-801.0	-746.1	1,094.5	0.30	0.22	
4,002.0	21.00	221.10	3,811.2	-825.0	-766.6	1,126.1	2.10	2.07	
4,093.0	19.40	220.90	3,896.6	-848.7	-787.2	1,157.5	1.76	-1.76	
4,185.0	19.50	221.00	3,983.4	-871.8	-807.3	1,188.1	0.11	0.11	
4,277.0	22.10	222.40	4,069.4	-896.2	-829.1	1,220.8	2.88	2.83	
4,368.0	22.10	222.80	4,153.7	-921.4	-852.2	1,255.0	0.17	0.00	
4,460.0	21.10	222.20	4,239.2	-946.4	-875.1	1,288.9	1.11	-1.09	
4,552.0	19.90	222.40	4,325.4	-970.2	-896.8	1,321.1	1.31	-1.30	
4,644.0	18.60	221.60	4,412.3	-992.7	-917.1	1,351.4	1.44	-1.41	
4,735.0	19.00	220.60	4,498.4	-1,014.8	-936.4	1,380.7	0.56	0.44	

Cathedral Energy Services

Survey Report

Company:	EnCana Oil & Gas (USA) Inc	Local Co-ordinate Reference:	Well 8506D-36 B36 496
Project:	Story Gulch	TVD Reference:	KBE @ 8374.0ft (Patterson 308)
Site:	S36-T4S-R96W (B36 496)	MD Reference:	KBE @ 8374.0ft (Patterson 308)
Well:	8506D-36 B36 496	North Reference:	True
Wellbore:	DD	Survey Calculation Method:	Minimum Curvature
Design:	DD	Database:	EDM 5000.1 US Multi Users DB

Survey

Measured Depth (ft)	Inclination (°)	Azimuth (°)	Vertical Depth (ft)	+N/-S (ft)	+E/-W (ft)	Vertical Section (ft)	Dogleg Rate (°/100ft)	Build Rate (°/100ft)	Formations / Comments
4,827.0	18.00	220.90	4,585.6	-1,036.9	-955.4	1,409.9	1.09	-1.09	
4,919.0	18.90	221.10	4,672.9	-1,058.9	-974.5	1,439.0	0.98	0.98	
5,010.0	18.50	222.00	4,759.1	-1,080.8	-993.9	1,468.2	0.54	-0.44	
5,102.0	20.20	221.00	4,845.9	-1,103.6	-1,014.1	1,498.7	1.88	1.85	
5,194.0	20.00	220.70	4,932.3	-1,127.5	-1,034.8	1,530.3	0.24	-0.22	
5,286.0	19.20	221.50	5,019.0	-1,150.8	-1,055.0	1,561.2	0.92	-0.87	
5,377.0	18.40	221.20	5,105.1	-1,172.8	-1,074.4	1,590.5	0.89	-0.88	
5,469.0	20.00	220.90	5,192.0	-1,195.6	-1,094.3	1,620.7	1.74	1.74	
5,561.0	19.60	220.30	5,278.6	-1,219.3	-1,114.6	1,651.9	0.49	-0.43	
5,652.0	19.10	220.90	5,364.4	-1,242.2	-1,134.2	1,682.0	0.59	-0.55	
5,744.0	18.30	221.10	5,451.6	-1,264.4	-1,153.5	1,711.5	0.87	-0.87	
5,835.0	18.20	222.80	5,538.0	-1,285.6	-1,172.6	1,740.0	0.60	-0.11	
5,927.0	17.80	224.10	5,625.5	-1,306.2	-1,192.1	1,768.4	0.62	-0.43	
6,019.0	17.30	224.00	5,713.2	-1,326.2	-1,211.4	1,796.2	0.54	-0.54	
6,110.0	19.40	223.70	5,799.6	-1,346.8	-1,231.3	1,824.8	2.31	2.31	
6,202.0	18.90	224.00	5,886.5	-1,368.6	-1,252.2	1,855.0	0.55	-0.54	
6,477.0	17.10	222.80	6,148.0	-1,430.3	-1,310.6	1,939.9	0.67	-0.65	
6,569.0	17.50	220.80	6,235.9	-1,450.7	-1,328.8	1,967.3	0.78	0.43	
6,661.0	16.40	218.00	6,323.9	-1,471.4	-1,345.8	1,994.0	1.49	-1.20	
6,753.0	17.80	218.10	6,411.8	-1,492.7	-1,362.5	2,021.0	1.52	1.52	
6,844.0	17.30	221.30	6,498.6	-1,513.8	-1,380.0	2,048.4	1.19	-0.55	
6,936.0	18.20	221.50	6,586.2	-1,534.9	-1,398.6	2,076.5	0.98	0.98	
7,028.0	17.00	221.50	6,673.9	-1,555.7	-1,417.0	2,104.3	1.30	-1.30	
7,119.0	18.60	221.90	6,760.5	-1,576.5	-1,435.5	2,132.1	1.76	1.76	
7,211.0	20.20	221.60	6,847.3	-1,599.3	-1,455.9	2,162.7	1.74	1.74	
7,303.0	20.30	222.70	6,933.6	-1,622.9	-1,477.2	2,194.5	0.43	0.11	
7,395.0	20.00	223.70	7,020.0	-1,646.0	-1,498.9	2,226.2	0.50	-0.33	
7,486.0	20.10	223.20	7,105.4	-1,668.6	-1,520.4	2,257.4	0.22	0.11	
7,578.0	19.60	223.10	7,192.0	-1,691.4	-1,541.7	2,288.6	0.54	-0.54	
7,669.0	19.10	223.40	7,277.8	-1,713.4	-1,562.4	2,318.8	0.56	-0.55	
7,761.0	18.80	221.00	7,364.9	-1,735.5	-1,582.5	2,348.6	0.91	-0.33	
7,852.0	18.10	220.60	7,451.2	-1,757.3	-1,601.3	2,377.4	0.78	-0.77	
7,944.0	17.80	220.20	7,538.7	-1,778.9	-1,619.7	2,405.8	0.35	-0.33	
8,036.0	17.90	220.50	7,626.3	-1,800.4	-1,637.9	2,434.0	0.15	0.11	
8,127.0	16.40	216.70	7,713.2	-1,821.3	-1,654.7	2,460.7	2.06	-1.65	
8,219.0	14.60	213.20	7,801.9	-1,841.4	-1,668.8	2,485.1	2.20	-1.96	
8,311.0	12.40	212.00	7,891.3	-1,859.5	-1,680.4	2,506.3	2.41	-2.39	
8,402.0	9.70	209.50	7,980.6	-1,874.5	-1,689.3	2,523.4	3.01	-2.97	
8,494.0	7.00	204.20	8,071.7	-1,886.4	-1,695.5	2,536.3	3.05	-2.93	
8,585.0	4.10	198.20	8,162.2	-1,894.5	-1,698.7	2,544.6	3.25	-3.19	
8,677.0	1.40	187.60	8,254.1	-1,898.7	-1,699.9	2,548.5	2.97	-2.93	
8,769.0	0.90	14.30	8,346.1	-1,899.2	-1,699.9	2,548.8	2.50	-0.54	
8,860.0	1.10	7.80	8,437.1	-1,897.6	-1,699.6	2,547.4	0.25	0.22	
8,952.0	0.50	0.90	8,529.1	-1,896.3	-1,699.5	2,546.4	0.66	-0.65	
9,044.0	0.40	280.50	8,621.1	-1,895.9	-1,699.8	2,546.3	0.64	-0.11	
9,135.0	0.90	47.50	8,712.1	-1,895.3	-1,699.6	2,545.7	1.30	0.55	
9,227.0	1.00	55.90	8,804.1	-1,894.4	-1,698.4	2,544.2	0.19	0.11	
9,319.0	1.10	82.90	8,896.0	-1,893.8	-1,696.8	2,542.8	0.54	0.11	
9,410.0	1.10	98.10	8,987.0	-1,893.8	-1,695.1	2,541.6	0.32	0.00	
9,502.0	1.30	141.30	9,079.0	-1,894.8	-1,693.6	2,541.3	0.98	0.22	
9,597.0	0.70	78.60	9,174.0	-1,895.5	-1,692.3	2,541.0	1.22	-0.63	
9,689.0	2.50	359.40	9,266.0	-1,893.4	-1,691.8	2,539.1	2.68	1.96	
9,781.0	2.00	351.10	9,357.9	-1,889.8	-1,692.1	2,536.6	0.65	-0.54	

Cathedral Energy Services

Survey Report

Company:	EnCana Oil & Gas (USA) Inc	Local Co-ordinate Reference:	Well 8506D-36 B36 496
Project:	Story Gulch	TVD Reference:	KBE @ 8374.0ft (Patterson 308)
Site:	S36-T4S-R96W (B36 496)	MD Reference:	KBE @ 8374.0ft (Patterson 308)
Well:	8506D-36 B36 496	North Reference:	True
Wellbore:	DD	Survey Calculation Method:	Minimum Curvature
Design:	DD	Database:	EDM 5000.1 US Multi Users DB

Survey

Measured Depth (ft)	Inclination (°)	Azimuth (°)	Vertical Depth (ft)	+N/-S (ft)	+E/-W (ft)	Vertical Section (ft)	Dogleg Rate (°/100ft)	Build Rate (°/100ft)	Formations / Comments
9,872.0	1.70	337.60	9,448.8	-1,887.0	-1,692.8	2,535.0	0.58	-0.33	
9,964.0	1.50	319.60	9,540.8	-1,884.8	-1,694.1	2,534.3	0.58	-0.22	
10,056.0	0.60	340.00	9,632.8	-1,883.4	-1,695.1	2,533.9	1.04	-0.98	
10,147.0	0.30	316.20	9,723.8	-1,882.8	-1,695.4	2,533.6	0.38	-0.33	
10,239.0	0.90	265.10	9,815.8	-1,882.7	-1,696.3	2,534.2	0.81	0.65	
10,330.0	0.70	248.00	9,906.8	-1,883.0	-1,697.5	2,535.2	0.34	-0.22	
10,422.0	0.90	243.50	9,998.8	-1,883.5	-1,698.7	2,536.4	0.23	0.22	
10,514.0	1.00	230.20	10,090.8	-1,884.3	-1,699.9	2,537.8	0.26	0.11	
10,605.0	1.40	230.90	10,181.7	-1,885.5	-1,701.4	2,539.7	0.44	0.44	
10,697.0	0.40	164.70	10,273.7	-1,886.6	-1,702.2	2,541.0	1.40	-1.09	
10,789.0	1.00	217.50	10,365.7	-1,887.5	-1,702.6	2,542.0	0.89	0.65	
10,880.0	1.20	212.20	10,456.7	-1,888.9	-1,703.6	2,543.7	0.25	0.22	
10,972.0	1.30	222.00	10,548.7	-1,890.5	-1,704.8	2,545.7	0.26	0.11	
11,064.0	0.20	25.90	10,640.7	-1,891.2	-1,705.4	2,546.6	1.62	-1.20	
11,155.0	0.00	280.50	10,731.7	-1,891.0	-1,705.4	2,546.4	0.22	-0.22	
11,247.0	0.20	129.00	10,823.7	-1,891.1	-1,705.2	2,546.4	0.22	0.22	
11,339.0	0.70	210.40	10,915.7	-1,891.7	-1,705.4	2,547.0	0.76	0.54	
11,430.0	1.00	223.60	11,006.7	-1,892.8	-1,706.2	2,548.3	0.39	0.33	
11,522.0	1.50	227.20	11,098.6	-1,894.2	-1,707.7	2,550.3	0.55	0.54	
11,613.0	1.50	232.20	11,189.6	-1,895.7	-1,709.5	2,552.7	0.14	0.00	
11,705.0	1.60	242.70	11,281.6	-1,897.0	-1,711.6	2,555.0	0.33	0.11	
11,797.0	1.50	251.10	11,373.5	-1,898.0	-1,713.9	2,557.3	0.27	-0.11	
11,888.0	1.30	285.00	11,464.5	-1,898.1	-1,716.0	2,558.8	0.92	-0.22	
11,980.0	1.20	285.90	11,556.5	-1,897.6	-1,717.9	2,559.7	0.11	-0.11	
12,072.0	1.50	283.80	11,648.5	-1,897.0	-1,720.0	2,560.7	0.33	0.33	
12,163.0	2.20	276.40	11,739.4	-1,896.6	-1,722.9	2,562.3	0.81	0.77	
12,255.0	2.60	266.00	11,831.3	-1,896.5	-1,726.7	2,564.8	0.64	0.43	
12,337.0	2.60	260.50	11,913.2	-1,896.9	-1,730.4	2,567.6	0.30	0.00	Last Cathedral svy @ 12,337' MD
12,392.0	2.60	260.50	11,968.2	-1,897.4	-1,732.9	2,569.6	0.00	0.00	Projection to Bit @ 12,392' MD

Cathedral Energy Services

Survey Report

Company:	EnCana Oil & Gas (USA) Inc	Local Co-ordinate Reference:	Well 8506D-36 B36 496
Project:	Story Gulch	TVD Reference:	KBE @ 8374.0ft (Patterson 308)
Site:	S36-T4S-R96W (B36 496)	MD Reference:	KBE @ 8374.0ft (Patterson 308)
Well:	8506D-36 B36 496	North Reference:	True
Wellbore:	DD	Survey Calculation Method:	Minimum Curvature
Design:	DD	Database:	EDM 5000.1 US Multi Users DB

Targets									
Target Name	Dip Angle	Dip Dir.	TVD	+N/-S	+E/-W	Northing	Easting	Latitude	Longitude
- hit/miss target	(°)	(°)	(ft)	(ft)	(ft)	(ft)	(ft)		
- Shape									
8506D-36-B36 496 BHL	0.00	0.00	11,874.0	-1,905.3	-1,719.0	1,675,488.70	2,262,573.09	39° 39' 31.74 N	108° 7' 10.45 W
- actual wellpath misses target center by 13.0ft at 12297.3ft MD (11873.6 TVD, -1896.7 N, -1728.7 E)									
- Rectangle (sides W30.0 H50.0 D0.0)									
8506D-36-B36 496 TGT	0.00	0.00	8,435.0	-1,905.3	-1,719.0	1,675,488.70	2,262,573.09	39° 39' 31.74 N	108° 7' 10.45 W
- actual wellpath misses target center by 20.8ft at 8857.7ft MD (8434.8 TVD, -1897.6 N, -1699.6 E)									
- Point									

Design Annotations				
Measured Depth	Vertical Depth	Local Coordinates		Comment
(ft)	(ft)	+N/-S (ft)	+E/-W (ft)	
2,990.0	2,850.1	-590.9	-555.8	Last Cathedral Survey @ 2990' MD
12,337.0	11,913.2	-1,896.9	-1,730.4	Last Cathedral svy @ 12,337' MD
12,392.0	11,968.2	-1,897.4	-1,732.9	Projection to Bit @ 12,392' MD

Checked By: _____ Approved By: _____ Date: _____