

**QUICKSILVER RESOURCES, INC.**

ADDENDUM TO LEGAL PLAT FOR  
 ROUNDUP #22-24D & #22-24ND  
 SECTION 24, T7N, R93W, 6th P.M.  
 SE 1/4 NW 1/4

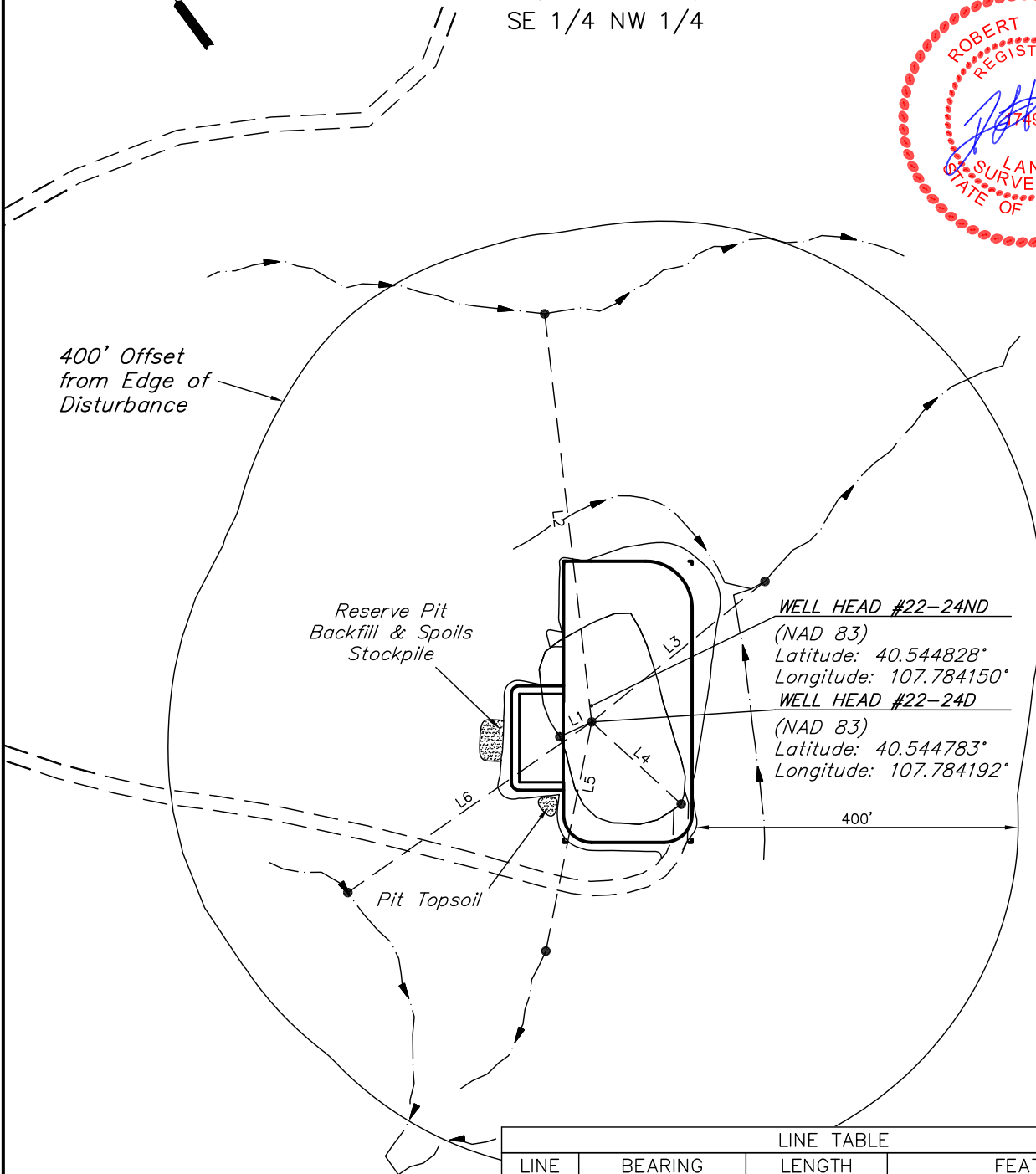
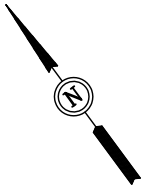
SCALE: 1" = 200'

DATE: 08-04-10

DRAWN BY: C.C.

REVISED: 03-08-11 M.D.

REVISED: 04-04-11 M.D.



**WELL HEAD #22-24ND**  
 (NAD 83)  
 Latitude: 40.544828°  
 Longitude: 107.784150°  
**WELL HEAD #22-24D**  
 (NAD 83)  
 Latitude: 40.544783°  
 Longitude: 107.784192°

LINE TABLE			
LINE	BEARING	LENGTH	FEATURE
L1	N78°26'20"W	43.68'	EDGE OF EXISTING PAD
L2	N29°50'22"E	511.38'	DRAINAGE
L3	N87°21'50"E	277.84'	DRAINAGE
L4	S11°01'19"E	151.36'	EXISTING ROAD
L5	S47°42'40"W	290.87'	DRAINAGE
L6	N88°34'02"W	370.39'	DRAINAGE

SURFACE USE OF LOCATION IS GRAZING,  
 VEGETATION CONSISTS MAINLY OF  
 NATIVE GRASSES.

# QUICKSILVER RESOURCES, INC.

LOCATION DRAWING FOR

ROUNDUP #22-24D & #22-24ND  
SECTION 24, T7N, R93W, 6th P.M.  
SE 1/4 NW 1/4

**FIGURE #4**

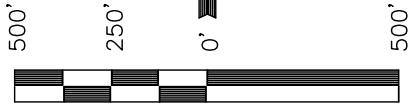
SCALE: 1" = 500'

DATE: 08-04-10

DRAWN BY: C.C.

REVISED: 03-08-11 M.D.

REVISED: 04-04-11 M.D.



SCALE

S89°52'17"W - 5280.55' (Meas.)

Set Marked Stone,  
N-S Fenceline  
Lat: 40.550728°  
Long: 107.791133°

Section Line

Set Marked Stone  
Lat: 40.550756°  
Long: 107.772136°

LINE TABLE			
LINE	BEARING	LENGTH	FEATURE
L1	S18°57'00"W	3483.50'	HIGHWAY 40
L2	S10°42'30"E	1600.97'	STREAM

1/4 Section Line



Section Line

1/16 Section Line

**7-11 RANCH, INC.**

Existing Road

N00°00'09"E - 5274.66' (Meas.)

S89°59'16"W 1874.59'  
(To Powerline)

Existing Pad

S72°00'00"W 3468.00' (To Building)

S65°57'36"W 56.1 Mi.  
(To Deserado Railroad)

33

1/4 Section Line

**PLANT COMMUNITY**

- DISTURBED GRASSLAND
- NATIVE GRASSLAND
- SHRUB LAND
- PLAINS RIPARIAN
- MOUNTAIN RIPARIAN
- FOREST LAND
- WETLANDS AQUATIC
- ALPINE
- OTHER (Describe): \_\_\_\_\_

**CURRENT LAND USE**

- CROP LAND:  IRRIGATED  DRY LAND  IMPROVED PASTURE  HAY MEADOW  CRP
- NON-CROP LAND:  RANGELAND  TIMBER  RECREATIONAL  OTHER (Describe) \_\_\_\_\_
- SUBDIVIDED:  INDUSTRIAL  COMMERCIAL  RESIDENTIAL \_\_\_\_\_

**FUTURE LAND USE**

- CROP LAND:  IRRIGATED  DRY LAND  IMPROVED PASTURE  HAY MEADOW  CRP
- NON-CROP LAND:  RANGELAND  TIMBER  RECREATIONAL  OTHER (Describe) \_\_\_\_\_
- SUBDIVIDED:  INDUSTRIAL  COMMERCIAL  RESIDENTIAL \_\_\_\_\_

Set Marked Stone,  
Steel Post, Fence  
Corner  
Lat: 40.536256°  
Long: 107.791139°

UINTAH ENGINEERING & LAND SURVEYING  
85 So. 200 East \* Vernal, Utah 84078 \* (435) 789-1017