

# QUICKSILVER RESOURCES, INC.

## LOCATION LAYOUT FOR

ROUNDUP #22-24D & #22-24ND

SECTION 24, T7N, R93W, 6th P.M.

SE 1/4 NW 1/4

**FIGURE #1**

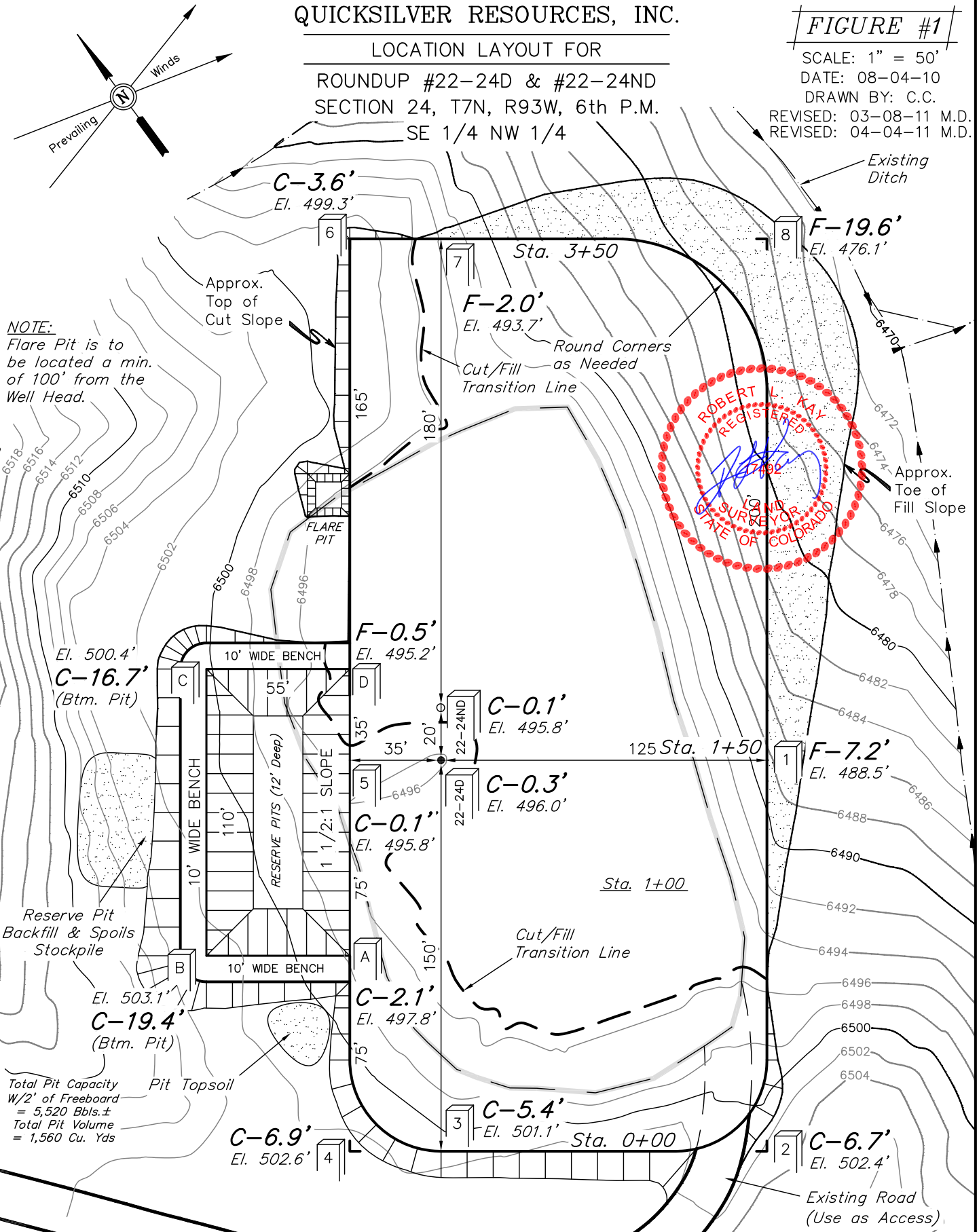
SCALE: 1" = 50'

DATE: 08-04-10

DRAWN BY: C.C.

REVISED: 03-08-11 M.D.

REVISED: 04-04-11 M.D.



Elev. Ungraded Ground At 22-24D Loc. Stake = **6496.0'**  
FINISHED GRADE ELEV. AT 22-24D LOC. STAKE = **6495.7'**

UINTAH ENGINEERING & LAND SURVEYING  
85 So. 200 East \* Vernal, Utah 84078 \* (435) 789-1017

# QUICKSILVER RESOURCES, INC.

FIGURE #2

TYPICAL CROSS SECTIONS FOR  
ROUNDUP #22-24D & #22-24ND  
SECTION 24, T7N, R93W, 6th P.M.  
SE 1/4 NW 1/4



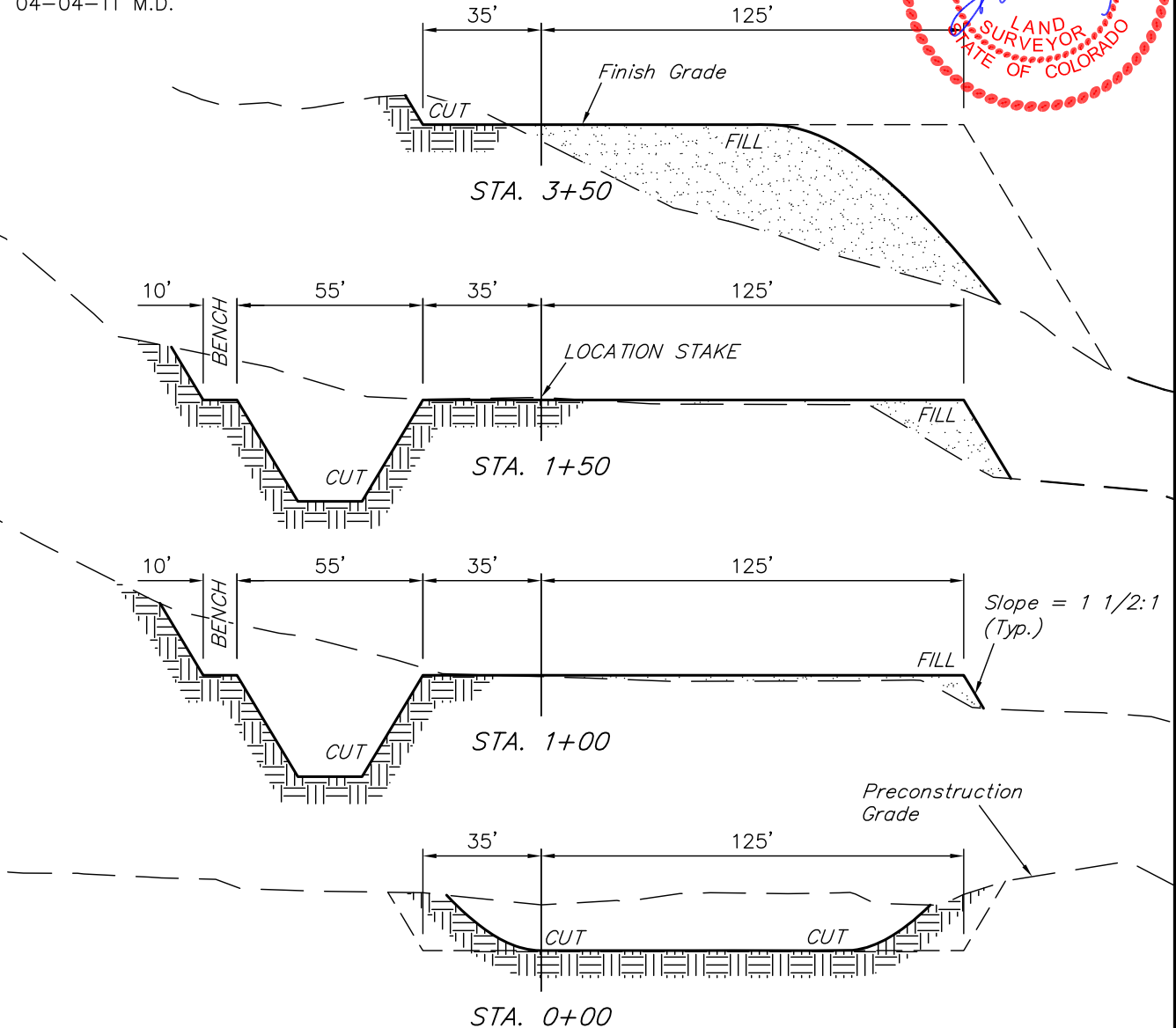
X-Section  
Scale  
1" = 50'

DATE: 08-04-10

DRAWN BY: C.C.

REVISED: 03-08-11 M.D.

REVISED: 04-04-11 M.D.



## APPROXIMATE ACREAGES

EXISTING WELL SITE DISTURBANCE =  $\pm 0.756$  ACRES  
NEW WELL SITE DISTURBANCE =  $\pm 1.771$  ACRES  
TOTAL =  $\pm 2.527$  ACRES

\* NOTE:  
FILL QUANTITY INCLUDES  
5% FOR COMPACTION

## APPROXIMATE YARDAGES

(6") Topsoil Stripping = 820 Cu. Yds.  
(New Construction Pit Area Only)  
Remaining Location = 3,790 Cu. Yds.  
TOTAL CUT = 4,610 CU.YDS.  
FILL = 7,840 CU.YDS.

DEFICIT MATERIAL = <3,230> Cu. Yds.  
Topsoil & Pit Backfill = 1,600 Cu. Yds.  
(1/2 Pit Vol.)  
DEFICIT UNBALANCE = <4,830> Cu. Yds.  
(After Interim Rehabilitation)

UINTAH ENGINEERING & LAND SURVEYING  
85 So. 200 East \* Vernal, Utah 84078 \* (435) 789-1017

# QUICKSILVER RESOURCES, INC.

## TYPICAL RIG LAYOUT FOR

ROUNDUP #22-24D & #22-24ND  
SECTION 24, T7N, R93W, 6th P.M.  
SE 1/4 NW 1/4

FIGURE #3

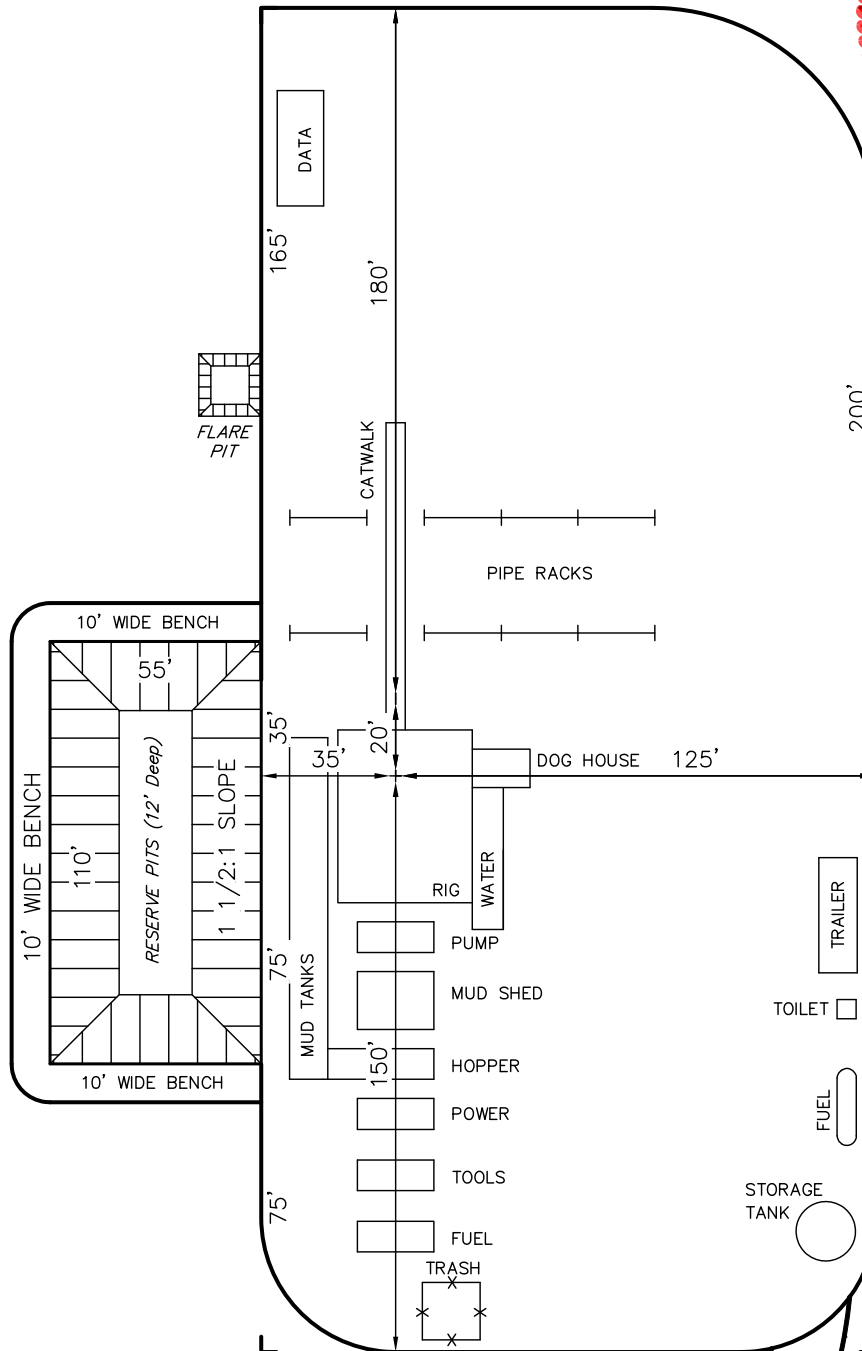
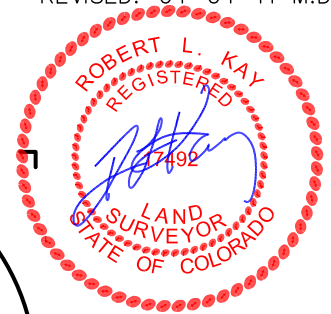
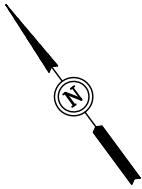
SCALE: 1" = 50'

DATE: 08-04-10

DRAWN BY: C.C.

REVISED: 03-08-11 M.D.

REVISED: 04-04-11 M.D.



Total Pit Capacity  
W/2' of Freeboard  
= 5,520 Bbls.±  
Total Pit Volume  
= 1,560 Cu. Yds