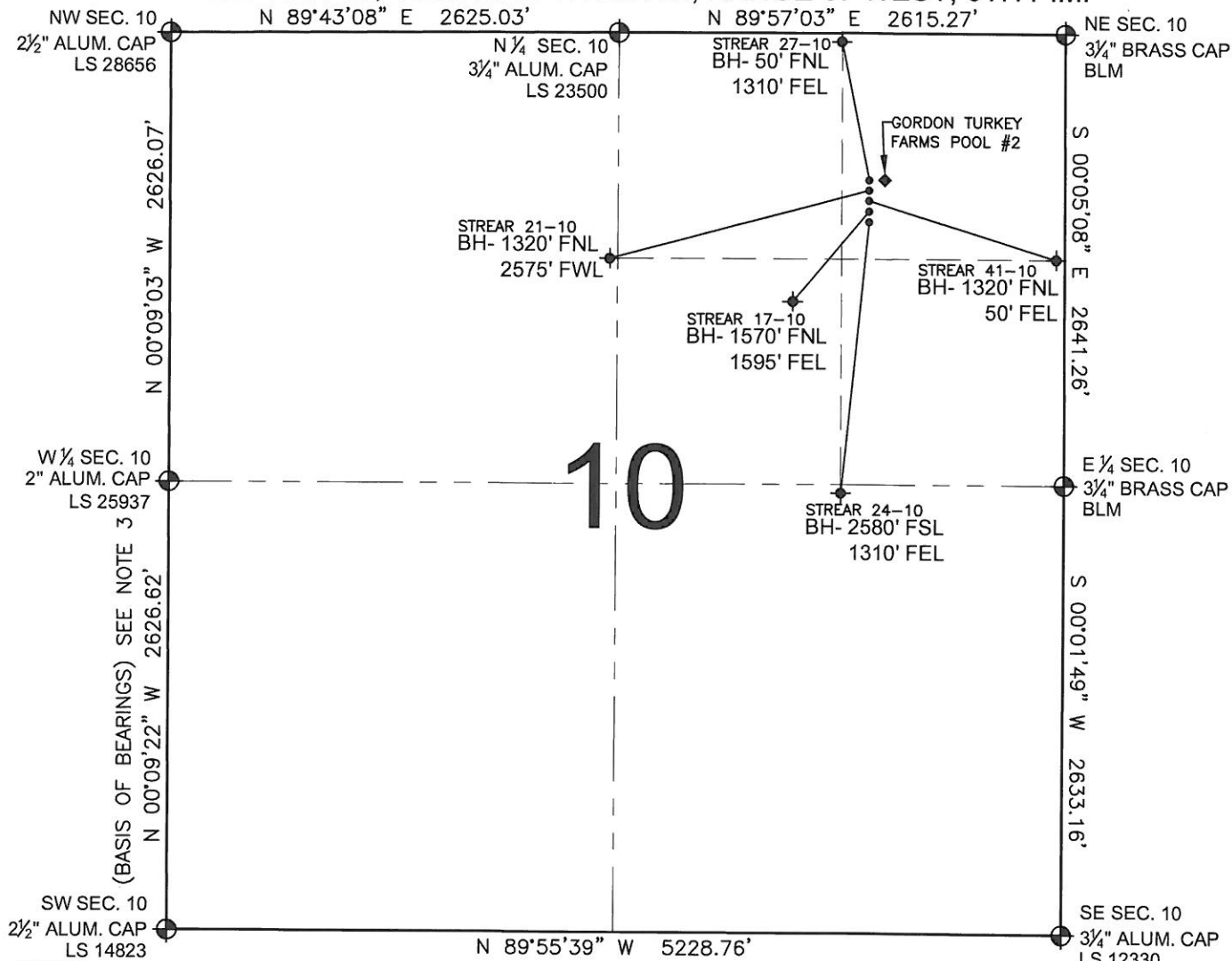


PAD DRAWING - STREAR 5 PAD

SECTION 10, TOWNSHIP 2 NORTH, RANGE 67 WEST, 6TH P.M.



LEGEND

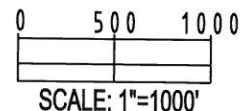
- ⊕ = EXISTING MONUMENT
- ⬤ = PROPOSED WELL
- ⬥ = BOTTOM HOLE
- ⬦ = EXISTING WELL
- BH= BOTTOM HOLE

NOTES:

- THIS SURVEY WAS DONE BY GPS METHODS AND CONFORMS TO THE MINIMUM STANDARDS SET BY THE C.O.G.C.C., RULE NO. 215
- ELEVATIONS SHOWN AT THE WELL HEAD, AS WELL AS HORIZONTAL CONTROL, ARE BASED ON GPS-RTK VALUES DERIVED FROM DOING 2-HOUR STATIC GPS SESSIONS AND REDUCTIONS USING O.P.U.S. SOLUTIONS.
VERTICAL = NAVD88; HORIZONTAL = NAD83/92
- THE BEARINGS SHOWN HEREON ARE BASED ON GPS OBSERVATIONS BETWEEN THE MONUMENTS SHOWN HEREON AS FOUND ON THE FIELD DATE BELOW.
- DISTANCES SHOWN ARE AT GROUND LEVEL, AS MEASURED IN THE FIELD, WITH TIES TO WELLS MEASURED AT A PERPENDICULAR TO SECTION LINES.

NOTES:

- STREAR 27-10 TO BE AT 994' FNL, 1146' FEL.
- BOTTOM HOLE AT 50' FNL & 1310' FEL.
- STREAR 21-10 TO BE AT 1004' FNL, 1146' FEL.
- BOTTOM HOLE AT 1320' FNL & 2575' FWL.
- STREAR 41-10 TO BE AT 1014' FNL, 1146' FEL.
- BOTTOM HOLE AT 1320' FNL & 50' FEL.
- STREAR 17-10 TO BE AT 1024' FNL, 1146' FEL.
- BOTTOM HOLE AT 1570' FNL & 1595' FEL.
- STREAR 24-10 TO BE AT 1034' FNL, 1146' FEL.
- BOTTOM HOLE AT 2580' FSL & 1310' FEL.
- GORDON TURKEY FARMS POOL #2 IS 994' FNL, 1097' FEL.



REVISIONS

INITIAL	DATE
SMF	09-17-10

PREPARED BY:

PFS

Petroleum Field Services, LLC
1801 W. 13th Ave.
Denver, CO 80204



KERR-MCGEE OIL & GAS ONSHORE LP

FIELD DATE:
06-02-10

DRAWING DATE:
06-09-10

BY:
SMF

PAD NAME:

STREAR 5 PAD

SURFACE LOCATION:

WELD COUNTY, COLORADO
NE 1/4 NE 1/4, SEC. 10, T2N, R67W