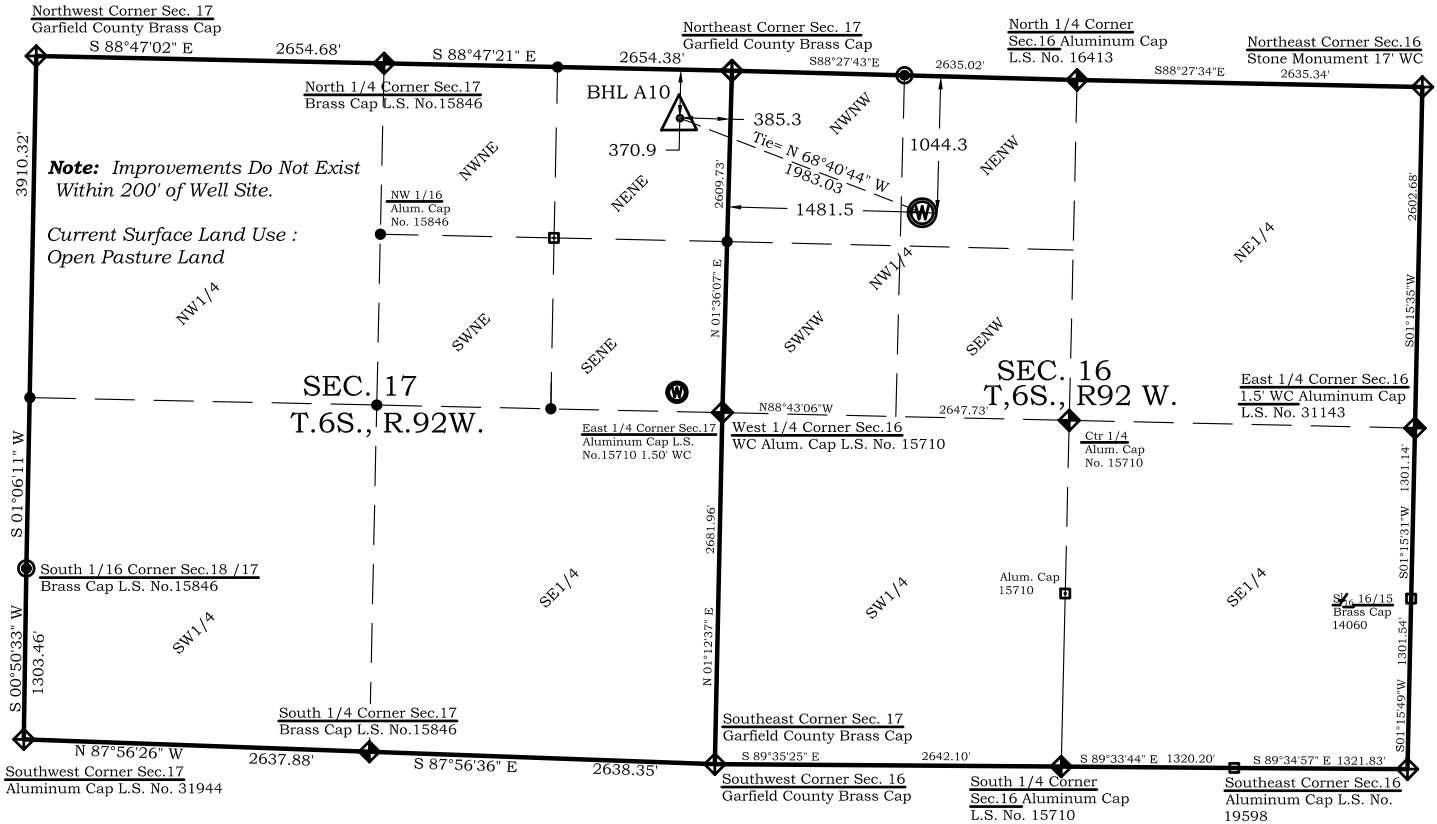


# MCPHERSON A10 Well Location Plat

## Section 16, Township 6 South, Range 92 West

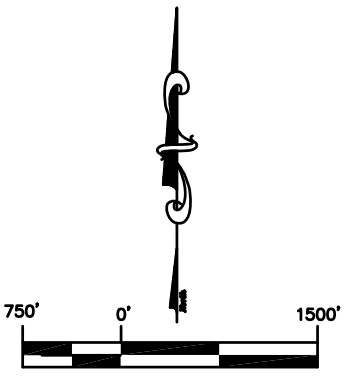


**Note:** Improvements Do Not Exist Within 200' of Well Site.

Current Surface Land Use :  
Open Pasture Land


### Legend

- ◊ - Field Surveyed Section Corner
- ◆ - Field Surveyed Quarter Corner
- ⊙ - Calculated Section Corner Location
- ⊕ - Field Surveyed 1/6 Corner



### SURVEYOR'S CERTIFICATE

I, SCOTT E. AIBNER, A REGISTERED LAND SURVEYOR, LICENSED UNDER THE LAWS OF THE STATE OF COLORADO DO HEREBY CERTIFY THAT THE SURVEY SHOWN HEREON WAS PREPARED BY RIVER VALLEY SURVEY, INC., FOR ANTERO RESOURCES, BY MEANS OF THE SURVEYOR'S DIRECT SUPERVISION AND HAS BEEN STAKED ON THE GROUND AS SHOWN ON THE PLAT AND THAT THIS PLAT IS A TRUE REPRESENTATION THEREOF.

BY:   
SCOTT E. AIBNER, COLORADO REG. NO. 31143

### Bottom: McPherson A10

371' FNL  
385' FEL  
**NAD83**  
Lat: 39.532936230°N  
Long: 107.682606392°W  
**NAD27**  
Lat: 39.532955701°N  
Long: 107.681905000°W

### Surface: McPherson A10

1044' FNL  
1482' FWL  
Gnd El= 5448.3  
Pad El= 5448.5  
**NAD83**  
Lat: 39.531109139°N  
Long: 107.675985681°W  
**NAD27**  
Lat: 39.531128601°N  
Long: 107.675370058°W  
UTM 13 NORTH  
**NAD 1983**  
NORTHING  
14367218.439  
EASTING  
885851.083

**Prepared For Antero Resources:  
Proposed MCPHERSON A10 Well Situate in The  
NW1/4 Section 16, Township 6 South, Range 92 West of  
the 6th. Principal Meridian, County of Garfield, State of  
Colorado.**

### Notes:

1. LATITUDE AND LONGITUDE COORDINATES ARE DIFFERENTIALLY CORRECTED AND BASED ON PUBLISHED NGS CONTROL STATION "WDP-5". SYSTEM: UTM ZONE: 13 NORTH DATUM: NAD 1983 (CONUS)
2. ELEVATIONS ARE BASED ON NAVD OF 1983.
3. ALL BOTTOM AND TOP HOLE LOCATIONS ARE MEASURED 90 DEGREES FROM SECTION LINE.
4. USGS QUADRANGLE MAP "GIBSON GULCH".
5. CURRENT SURFACE LAND USE: OPEN RANGE LAND.
6. PDOP AT THE TIME OF LOCATION OF SURFACE WELL = 2.5



**River Valley Survey, Inc.**  
110 East 3rd. Street, Suite 213  
Rifle, Colorado 81650  
Ph: 970-379-7846

<b>Project: MCPHERSON A PAD</b>	
<b>Field Date:</b> 03-18-11	<b>Scale:</b> 1"= 1500'
<b>Date:</b> 04-21-11	<b>Sheet:</b> 1 of 10

**Well Location Plat**  
**Prepared For Antero Resources**  
**Situate In:**  
NE1/4 Section 16,  
T6S., R. 92 W. of the 6th P.M.,  
Garfield County, Colorado

