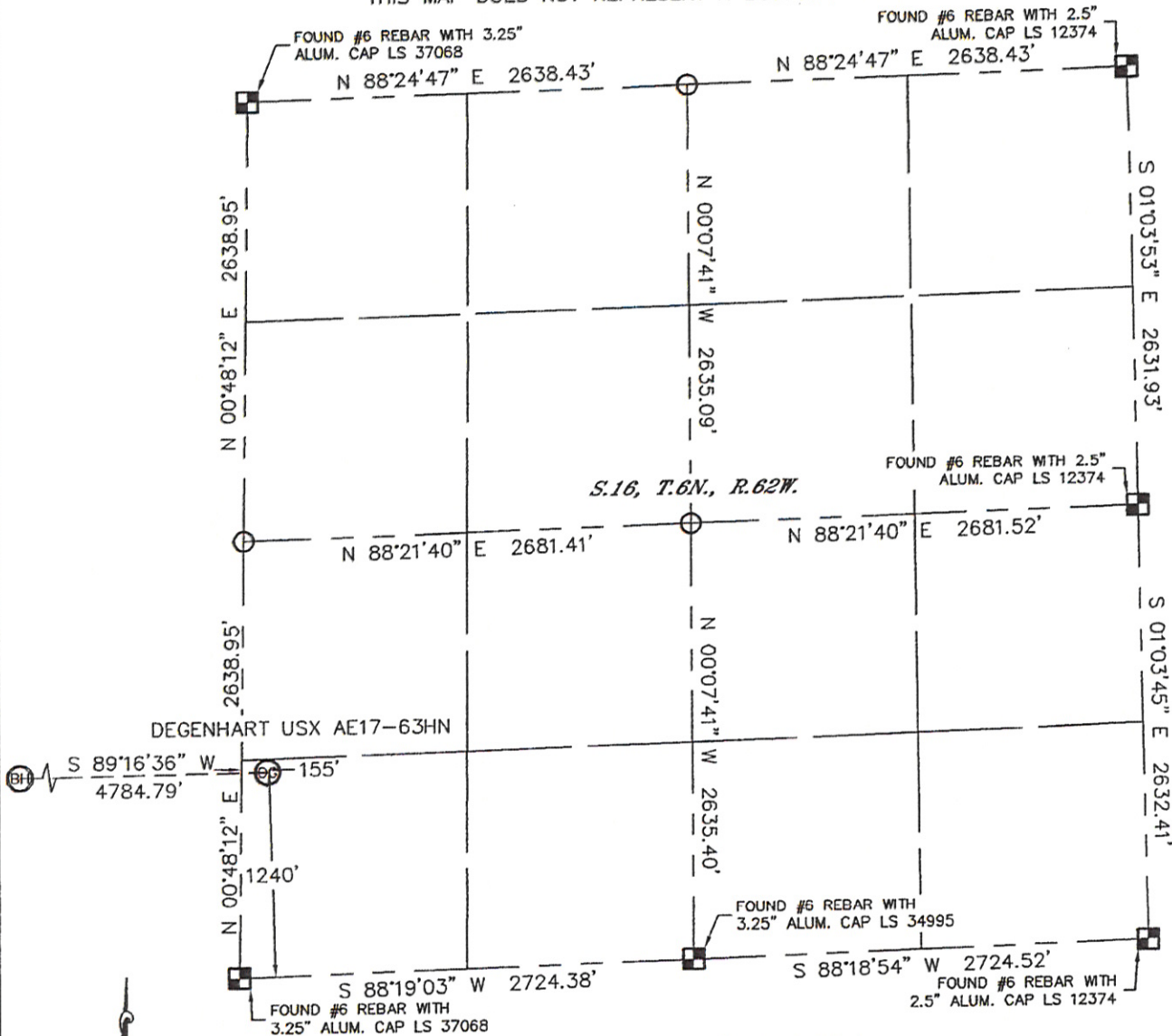


WELL LOCATION CERTIFICATE

SECTION: 16
TOWNSHIP: 6N
RANGE: 62W

THIS MAP DOES NOT REPRESENT A BOUNDARY SURVEY



In accordance with a request from Erik Van Decar with Noble Energy Inc., Lat40°, Inc. has determined the surface location of the DEGENHART USX AE17-63HN to be 1240' from the SOUTH line and 155' from the WEST line as measured at right angles from the section lines of Section 16, Township 6 North, Range 62 West and the bottom hole to be 1320' from the SOUTH line and 535' from the WEST line as measured at right angles from the section lines of Section 17, Township 6 North, Range 62 West of the Sixth Principal Meridian, County of Weld, State of Colorado.

I hereby state that this Well Location Certificate was prepared by me, or under my direct supervision, that the fieldwork was completed on 3-2-11, for and on behalf of Noble Energy Inc. That this is not a Land Survey Plat or an Improvement Survey Plat, and that it is not to be relied upon for establishment of fence, building, or other future improvement lines.

SURFACE LOCATION	BOTTOM HOLE
LATITUDE: 40.48315°N	LATITUDE: 40.48316°N
LONGITUDE: 104.33679°W	LONGITUDE: 104.35398°W
POOP: 2.0	
ELEV: 4913'	
1/4, 1/4: SW1/4SW1/4	
NEAREST PROPERTY LINE: 155' WEST	

NOTE:

- 1) Bearings shown are Grid Bearings of the Colorado State Plane Coordinate System, North Zone, North American Datum 1983/2007. The lined dimensions as contained herein are based upon the "U.S. Survey Foot."
- 2) Ground elevations are based on an observed GPS elevation (NAVD 1988 DATUM).
- 3) NEAREST EXISTING WELL: NONE WITHIN QUARTER SECTION
- 4) IMPROVEMENTS: See LOCATION DRAWING for all visible improvements within 400' of disturbed area.
- 5) SURFACE USE: RANGELAND
- 6) INSTRUMENT OPERATOR: BRIAN BRINKMAN

NOTE

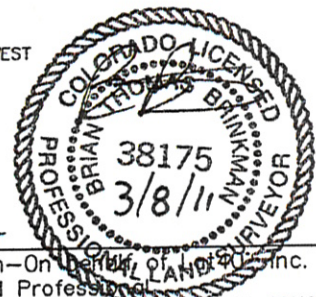
According to Colorado law, you must commence any legal action based upon any defect in this W.L.C. within three years after you discover such defect. In no event, may any action based upon any defect in this survey be commenced more than ten years after the date of the certificate shown hereon. (13-80-105 C.R.S.)

LEGEND

- = ALIQUOT MONUMENT AS DESCRIBED
- = CALCULATED POSITION

SHEET 1 OF 2

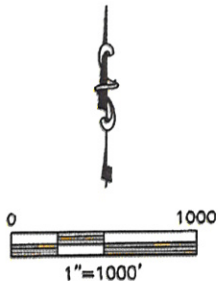
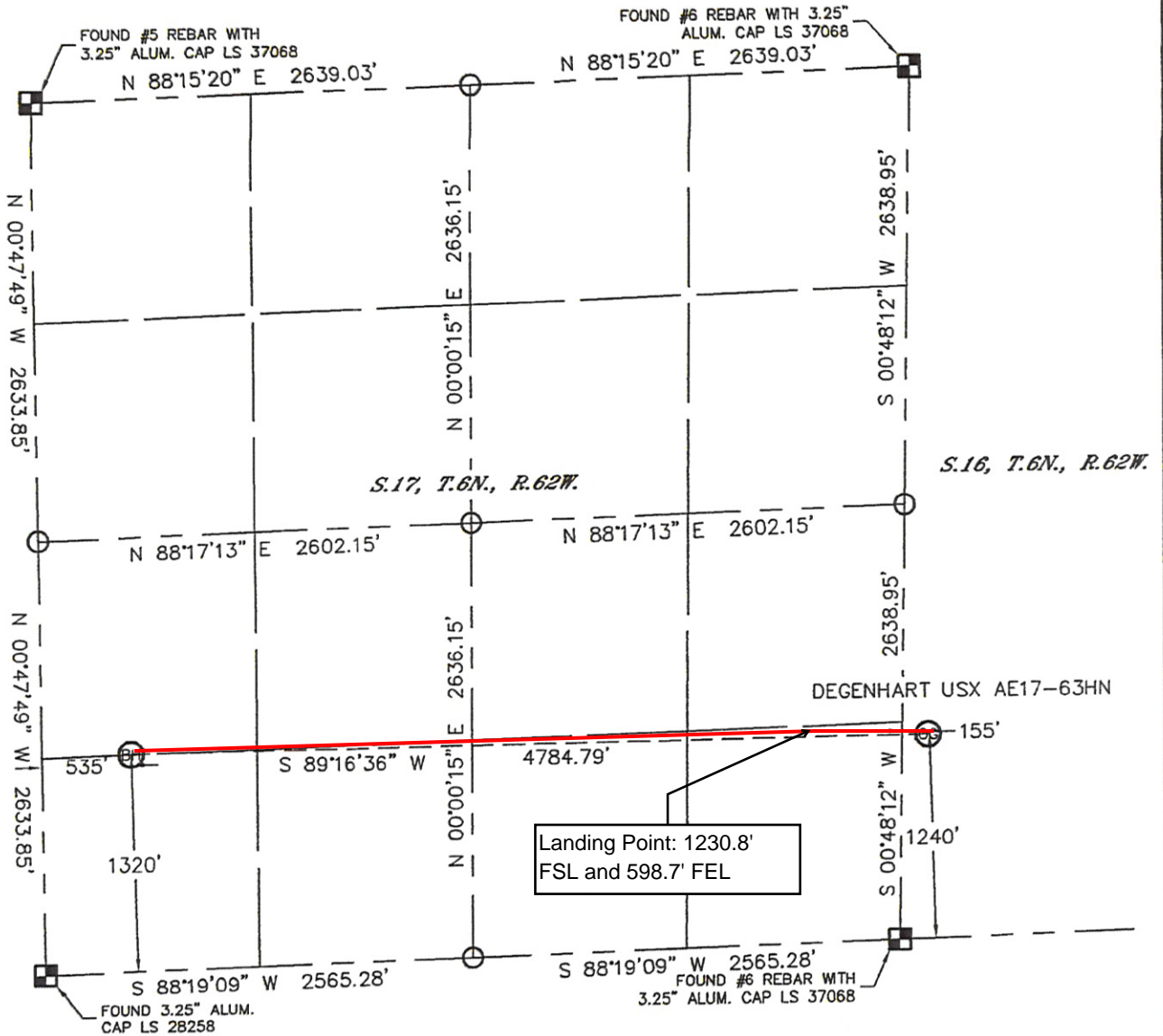
Brian T. Brinkman—On Behalf of Lat40°, Inc.
Colorado Licensed Professional
Land Surveyor No. 38175 PROJECT#: 2011049



WELL LOCATION CERTIFICATE



THIS MAP DOES NOT REPRESENT A BOUNDARY SURVEY

SECTION: 16
TOWNSHIP: 6N
RANGE: 62W



NOTE
According to Colorado law, you must commence any legal action based upon any defect in this W.L.C. within three years after you discover such defect. In no event, may any action based upon any defect in this survey be commenced more than ten years after the date of the certificate shown hereon. (13-80-105 C.R.S.)

LEGEND

-  = ALIQUOT MONUMENT AS DESCRIBED
-  = CALCULATED POSITION

SHEET 2 of 2

Brian T. Brinkman—On behalf of Lat40°, Inc.
Colorado Licensed Professional
Land Surveyor No. 38175 PROJECT#: 2011049

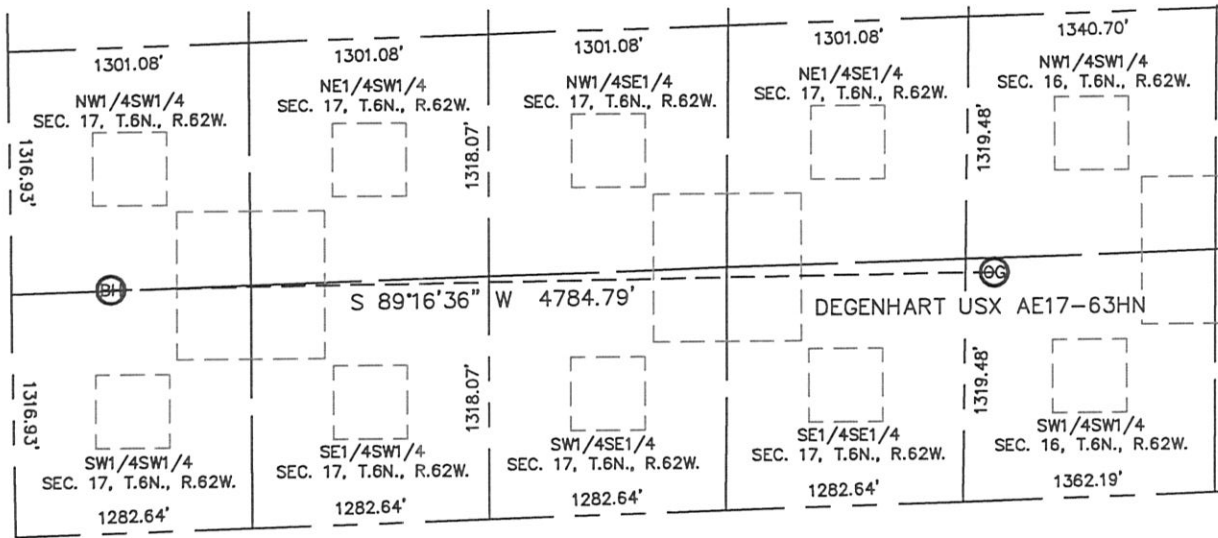


Lat40°, Inc. 1635 Foxtrail Drive, Suite 325 Loveland, CO 80538

SITE SKETCH

DEGENHART USX AE17-63HN

SECTION: 16
TOWNSHIP: 6N
RANGE: 62W



NOTE: NO EXISTING WELLS ALONG WELL BORE PATH

