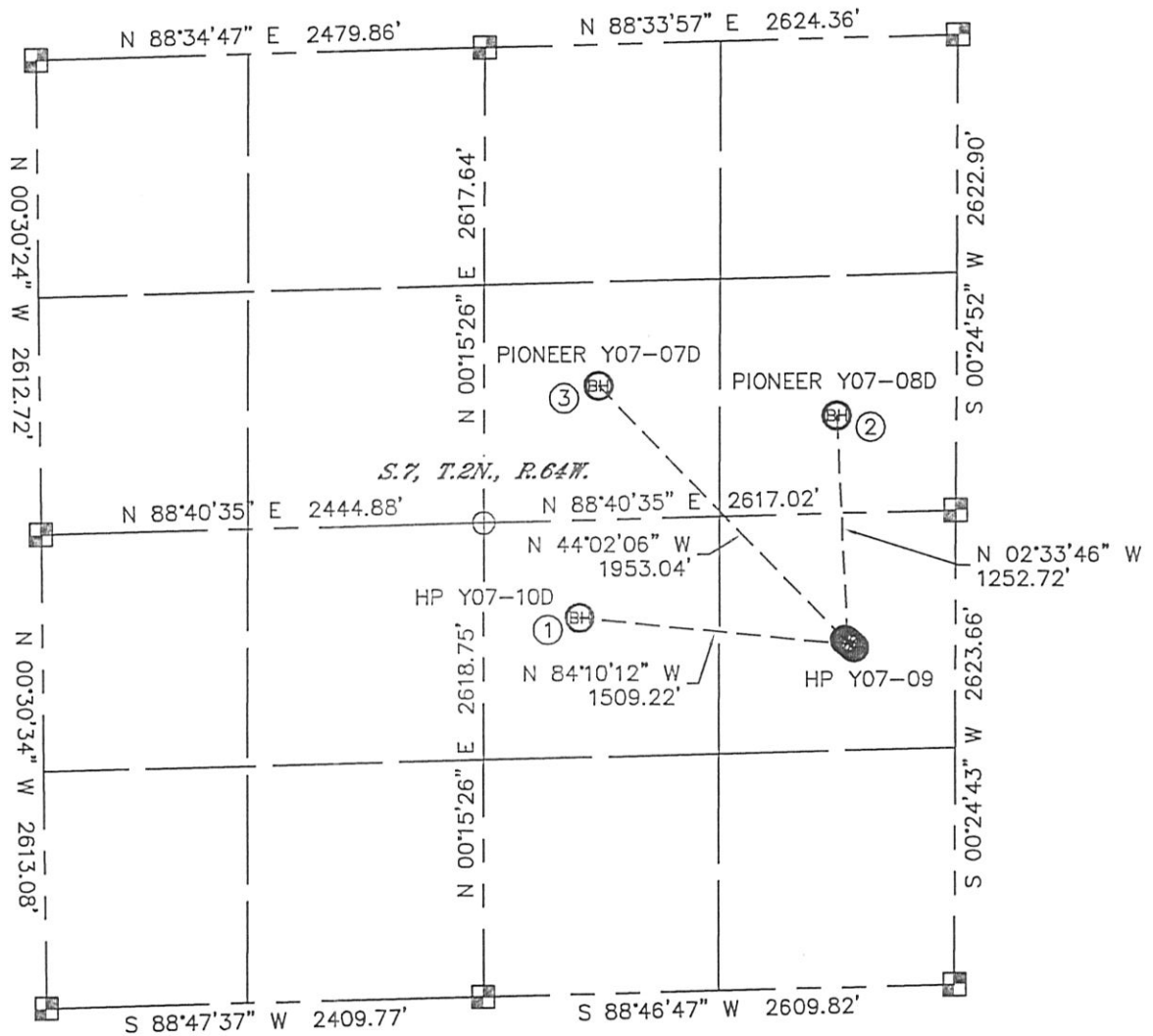


# MULTI-WELL PLAN



THIS MAP DOES NOT REPRESENT A BOUNDARY SURVEY  
PIONEER Y07-07D, 08D, & HP Y07-09, 10D

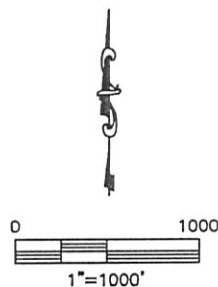
SECTION: 7  
TOWNSHIP: 2N  
RANGE: 64W



- |  |  |   |
|--|--|---|
| <p>①</p> <p>—BOTTOM HOLE—<br/>HP Y07-10D<br/>2080' FSL<br/>2080' FEL<br/>LAT-40.15132°N<br/>LONG-104.59230°W</p> | <p>②</p> <p>—BOTTOM HOLE—<br/>PIONEER Y07-08D<br/>2080' FNL<br/>660' FEL<br/>LAT-40.15433°N<br/>LONG-104.58715°W</p> | <p>③</p> <p>—BOTTOM HOLE—<br/>PIONEER Y07-07D<br/>1880' FNL<br/>1980' FEL<br/>LAT-40.15483°N<br/>LONG-104.59186°W</p> |
|--|--|---|

## LEGEND

-  = ALIQUOT MONUMENT AS DESCRIBED  
 = CALCULATED POSITION



Lat40°, Inc. 1635 Foxtrail Drive, Suite 325 Loveland, CO 80538

## MULTI-WELL PLAN

PIONEER Y07-07D, 08D, & HP Y07-09, 10D

SECTION: 7  
TOWNSHIP: 2N  
RANGE: 64W

