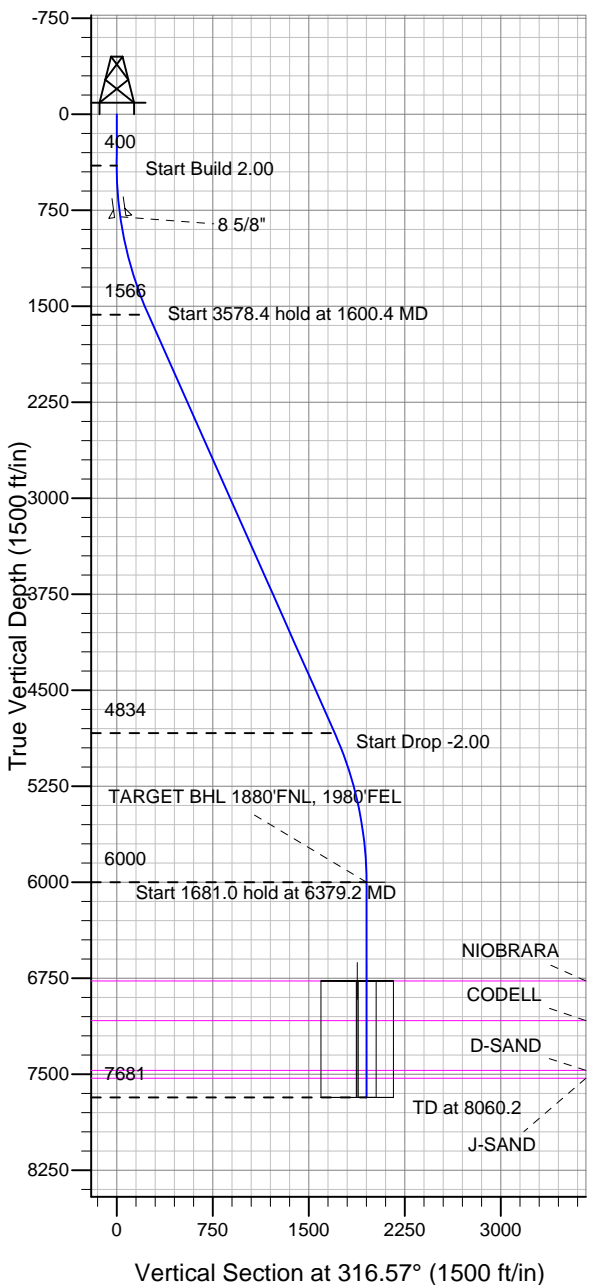


ENSIGN

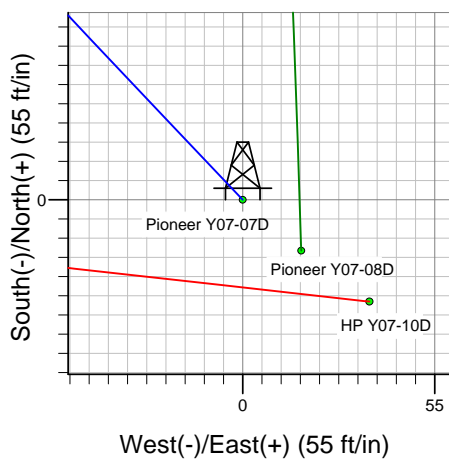
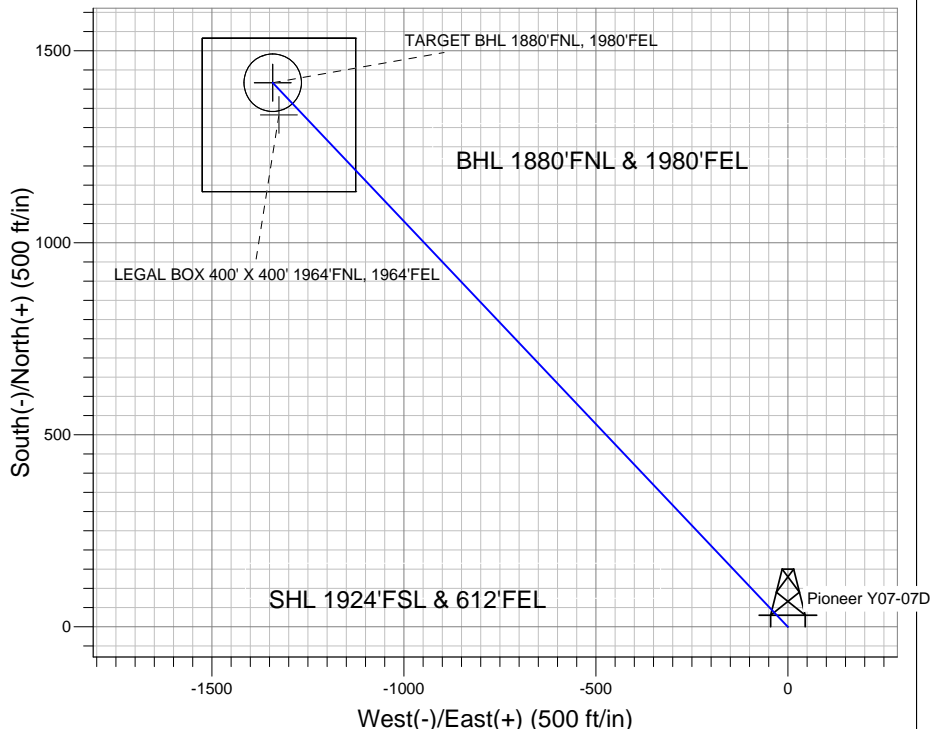
Directional

Well Name: Pioneer Y07-07D

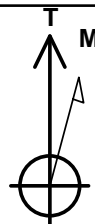
Surface Location: Pioneer Y07-08D Pad Sec.7-T2N-R64W
 North American Datum 1983 US State Plane 1983 Colorado Northern Zone
 Ground Elevation: 4860.0
 +N/-S +E/-W Northing Easting Latitude Longitude Slot
 0.0 0.0 1299144.45 3255192.83 40.150940 -104.587060
 Original Well Elev WELL @ 4873.0ft (Original Well Elev)



NOBLE ENERGY INC WELD COUNTY CO



Pioneer Y07-08D Pad Sec.7-T2N-R64W
 Pioneer Y07-07D
 Noble Pioneer Y07-07D Plan #1 (4-07-11)
 14:14, April 15 2011



Azimuths to True North
 Magnetic North: 8.77°

Magnetic Field
 Strength: 53037.0snT
 Dip Angle: 66.88°
 Date: 4/15/2011
 Model: IGRF2010

WELLBORE TARGET DETAILS (LAT/LONG)

Name	TVD	+N/-S	+E/-W	Latitude	Longitude	Shape
TARGET BHL 1880'FNL, 1980'FEL	6000.0	1417.2	-1341.7	40.154830	-104.591860	Point
LEGAL BOX 400' X 400' 1964'FNL, 1964'FEL	6771.0	1333.2	-1325.7	40.154600	-104.591803	Rectangle (Sides: L400.0 W400.0)
TARGET CIRCLE 1880'FNL & 1980'FEL	6771.0	1417.2	-1341.7	40.154830	-104.591860	Circle (Radius: 75.0)

SECTION DETAILS

Sec	MD	Inc	Azi	TVD	+N/-S	+E/-W	DLeg	TFace	VSec	Target
1	0.0	0.00	0.00	0.0	0.0	0.0	0.00	0.00	0.0	
2	400.0	0.00	0.00	400.0	0.0	0.0	0.00	0.00	0.0	
3	1600.4	24.01	316.57	1565.6	180.0	-170.4	2.00	316.57	247.8	
4	5178.8	24.01	316.57	4834.4	1237.2	-1171.4	0.00	0.00	1703.7	
5	6379.2	0.00	0.00	6000.0	1417.2	-1341.7	2.00	180.00	1951.6	TARGET BHL 1880'FNL, 1980'FEL
6	8060.2	0.00	0.00	7681.0	1417.2	-1341.7	0.00	0.00	1951.6	