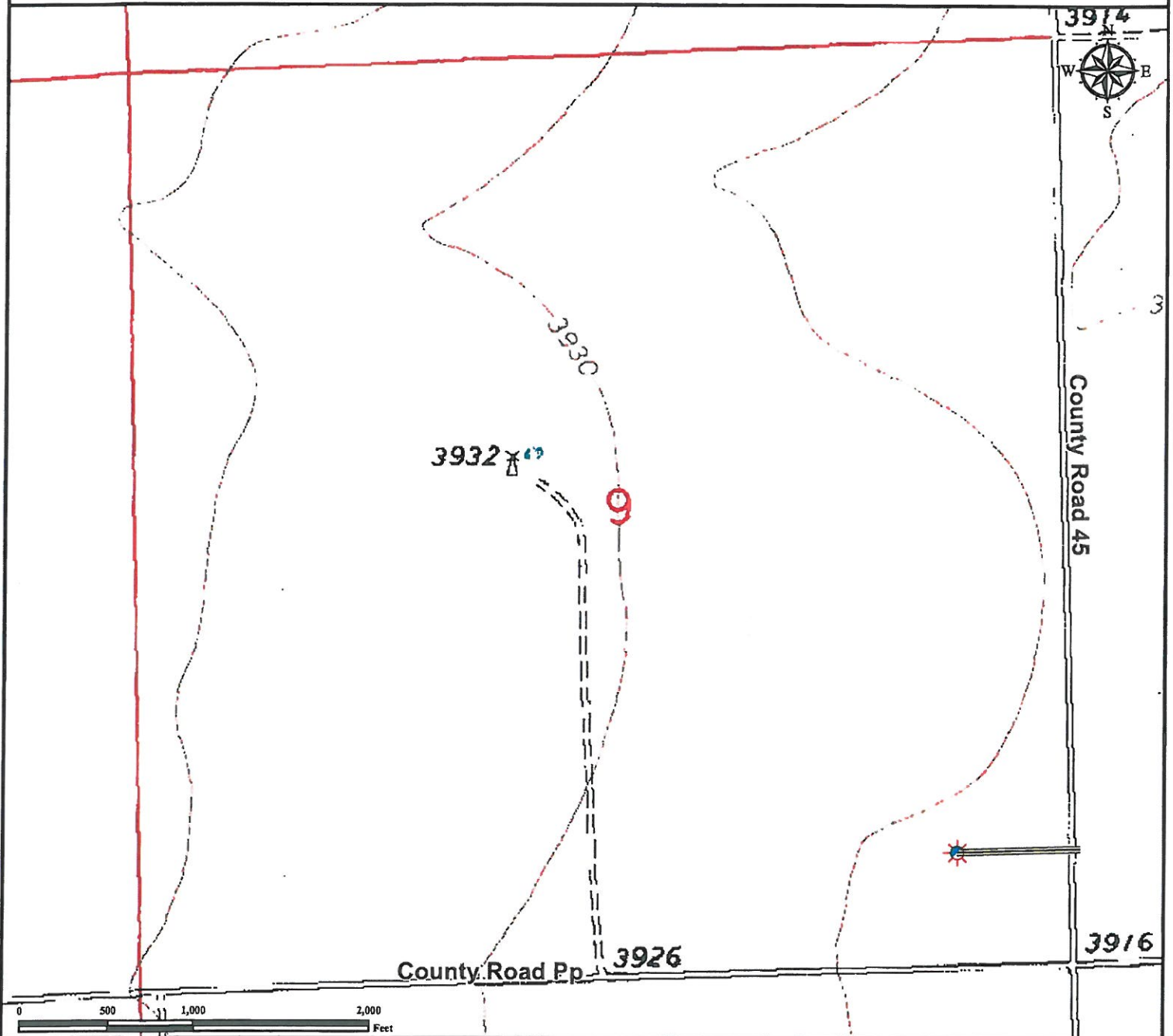


# Access Road Map THOMPSON 9-1-4

SE¼ SE¼ SECTION 9, TOWNSHIP 29 SOUTH, RANGE 43 WEST OF THE 6TH PRINCIPAL MERIDIAN



**From Two Buttes, CO:** Enter onto CO-116 and continue East  $\pm 7.9$  Miles to County road 45.

**Turn Right** Onto County Road 45 and continue South 1.8 Miles to proposed well access.

**Turn Right** onto well access road and continue West  $\pm 0.15$  to proposed well location.

Total distance from Two Buttes, CO to well location is  $\pm 9.85$  Miles.

## Legend



Proposed Well



Access Road

## Reference Location

**\*\* All Measurements are Made from  
Reference Well THOMPSON 9-1-4 \*\***

Lat: 37.53080° Long: -102.25763° (NAD 83)  
Elevation: 3918 Feet



Use our resources to find yours!  
[www.petro-fs.com](http://www.petro-fs.com)  
(303) 928-7128

Field Date: 04/12/2011  
Drafting Date: 04/18/2011  
Drafter: DMM  
Checked By: BHF

Data Sources:  
- Topo courtesy of USGS

Prepared for:

**ENERGY ONE LLC**