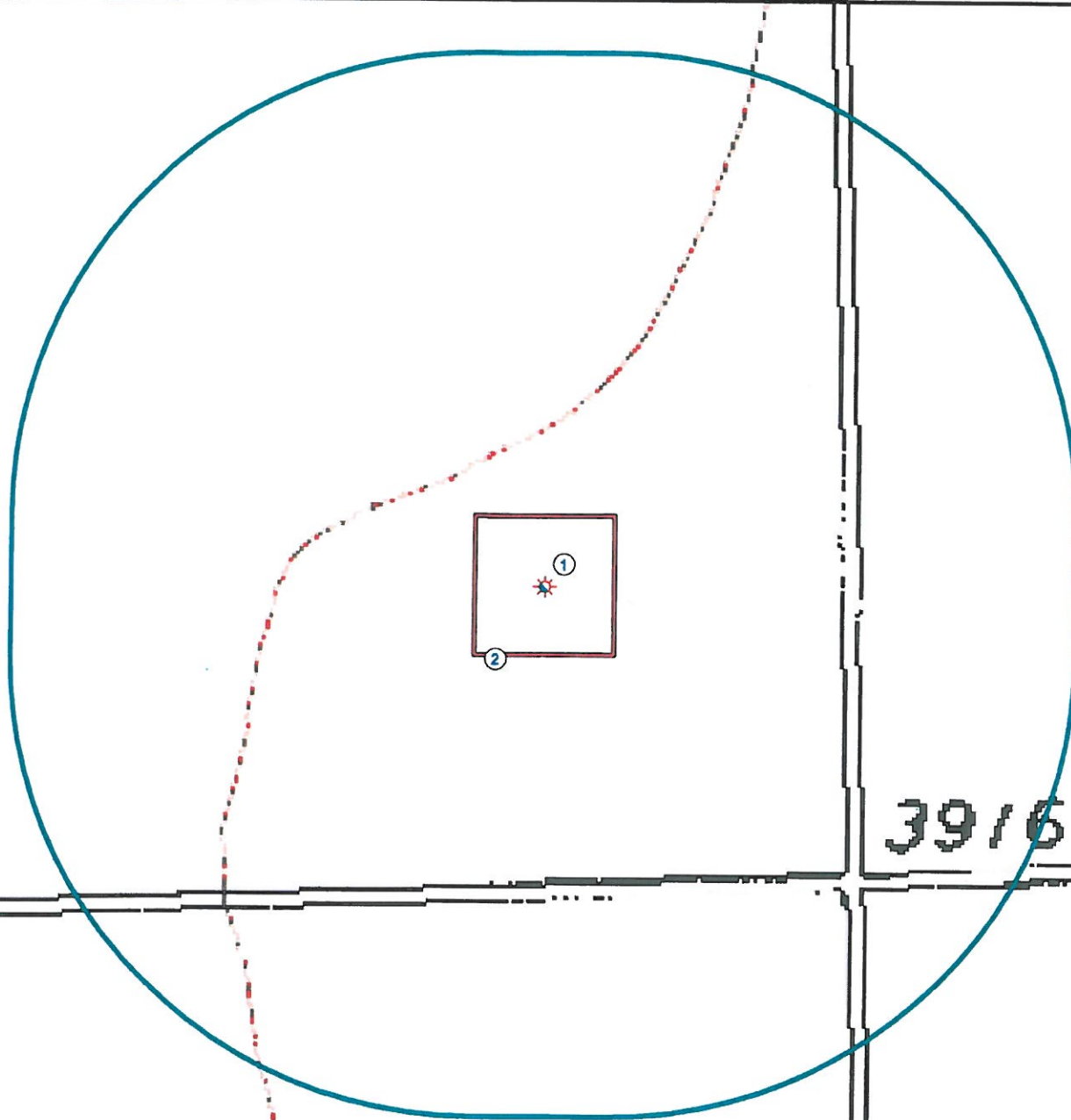


# Hydrology Map THOMPSON 9-1-4

SE¼ SE¼ SECTION 9, TOWNSHIP 29 SOUTH, RANGE 43 WEST OF THE 6TH PRINCIPAL MERIDIAN



1. Proposed Well THOMPSON 9-1-4.

2. Operational Disturbance Area.

There are No Surface Waters Within a 1000' Radius of the Disturbance Area of the Proposed Oil and Gas Location.

## Legend



Proposed Well



Disturbance Area



400' Radius

## Reference Location

**\*\* All Measurements are Made from  
Reference Well THOMPSON 9-1-4 \*\***

Lat: 37.53080° Long: -102.25763° (NAD 83)  
Elevation: 3918 Feet



*Use our resources to find yours!*  
[www.petro-fs.com](http://www.petro-fs.com)  
(303) 928-7128

Field Date: 04/12/2011  
Drafting Date: 04/18/2011  
Drafter: DMM  
Checked By: BHF

Data Sources:  
- Topo courtesy of USGS

Prepared for:

**ENERGY ONE LLC**