

**HALLIBURTON**

---

# **CHEVRON - MID-CONTINENT EBIZ**

---

**SKR 598-35-AV-12  
PICEANCE  
Garfield County , Colorado**

## **Cement Production Casing** **26-Oct-2007**

### **Cementing Post Job Report**

**CEMENT SUPERVISOR: BRANDON REEVES**

## Cementing Job Log

The Road to Excellence Starts with Safety

Sold To #: 338668	Ship To #: 2604993	Quote #:	Sales Order #: 5427316
Customer: CHEVRON - MID-CONTINENT EBIZ		Customer Rep: DAN MEIER	
Well Name: SKR		Well #: 598-35-AV-12	API/UWI #: 05-045-14391
Field: PICEANCE	City (SAP): Debeque	County/Parish: Garfield	State: Colorado
Legal Description:			
Lat: N 0 deg. OR N 0 deg. 0 min. 0 secs.		Long: E 0 deg. OR E 0 deg. 0 min. 0 secs.	
Contractor: H&P		Rig/Platform Name/Num: H&P 318	
Job Purpose: Cement Production Casing			Ticket Amount:
Well Type: Development Well		Job Type: Cement Production Casing	
Sales Person: MURPHY, SHAUNA		Srvc Supervisor: REEVES, BRANDON	MBU ID Emp #: 287883

Activity Description	Date/Time	Cht #	Rate bbl/ min	Volume bbl		Pressure psig		Comments
				Stage	Total	Tubing	Casing	
Call Out	10/26/2007 02:45							
Depart from Service Center or Other Site	10/26/2007 05:00							
Arrive At Loc	10/26/2007 06:30							
Safety Meeting - Assessment of Location	10/26/2007 07:00							
Rig-Up Equipment	10/26/2007 09:00							
Safety Meeting - Pre Job	10/26/2007 10:00							
Start Job	10/26/2007 10:30							TD-7261' TP-7233' SJ-47.31' MW-10.0#
Test Lines	10/26/2007 10:31						5000. 0	
Pump Spacer 1	10/26/2007 10:36		7	50			770.0	DYED WATER, 20 BBSLS. WATER/POLYFLAKE
Pump Lead Cement	10/26/2007 10:48		7	85.6			1050. 0	310 SKS. @ 12.8# 1.55 YIELD 7.15 WRQ.
Pump Tail Cement	10/26/2007 11:08		5.5	312			980.0	1200 SKS. @ 13.1# 1.46 YIELD 6.41 WRQ.
Clean Lines	10/26/2007 12:14							
Drop Top Plug	10/26/2007 12:18							
Pump Displacement	10/26/2007 12:19		7				2200. 0	KCL WATER
Pump Displacement	10/26/2007 12:35		3	100			1835. 0	SLOW RATE
Bump Plug	10/26/2007 12:37		3	111			2520. 0	PLUG LANDED
Check Floats	10/26/2007 12:41							

*Cementing Job Log*

Activity Description	Date/Time	Cht #	Rate bbl/ min	Volume bbl		Pressure psig		Comments
				Stage	Total	Tubing	Casing	
End Job	10/26/2007 12:43							WELL CIRCULATED BEFORE STARTING JOB. PIPE WAS NOT RECIPROCATED DURING JOB. CIRCULATED DYED WATER/ POLYFLAKE TO SURFACE. HAD TO ADJUST RATE SEVERAL TIMES WHILE PUMPING CEMENT TO THE DENSITY UP.



## The Road to Excellence Starts with Safety

Sold To #: 338668	Ship To #: 2604993	Quote #:	Sales Order #: 5427316
Customer: CHEVRON - MID-CONTINENT EBIZ	Customer Rep: DAN MEIER		
Well Name: SKR	Well #: 598-35-AV-12	API/UWI #: 05-045-14391	
Field: PICEANCE	City (SAP): Debeque	County/Parish: Garfield	State: Colorado
Contractor: H&P	Rig/Platform Name/Num: H&P 318		
Job Purpose: Cement Production Casing			
Well Type: Development Well	Job Type: Cement Production Casing		
Sales Person: MURPHY, SHAUNA	Srvc Supervisor: REEVES, BRANDON	MBU ID Emp #: 287883	

## Job Personnel

HES Emp Name	Exp Hrs	Emp #	HES Emp Name	Exp Hrs	Emp #	HES Emp Name	Exp Hrs	Emp #
KING, KERRY Sherman	0.0	342363	LESLIE, MICHAEL D	0.0	320605	MCFARLAND, BRETT A	0.0	388888
REEVES, BRANDON W	0.0	287883						

## Equipment

HES Unit #	Distance-1 way	HES Unit #	Distance-1 way	HES Unit #	Distance-1 way	HES Unit #	Distance-1 way
10616651C	120 mile	10783473	120 mile	10829463	120 mile	10867322	120 mile

## Job Hours

Date	On Location Hours	Operating Hours	Date	On Location Hours	Operating Hours	Date	On Location Hours	Operating Hours
10/26/2007	6	4						
TOTAL			Total is the sum of each column separately					

## Job

Formation Name	Job Times	Date	Time	Time Zone
Formation Depth (MD) Top Bottom	Called Out			
Form Type BHST	On Location	26 - Oct - 2007	06:30	MST
Job depth MD 7233. ft Job Depth TVD 7233. ft	Job Started	26 - Oct - 2007	10:30	MST
Water Depth Wk Ht Above Floor 4. ft	Job Completed	26 - Oct - 2007	12:43	MST
Perforation Depth (MD) From To	Departed Loc			

## Well Data

Description	New / Used	Max pressure psig	Size in	ID in	Weight lbm/ft	Thread	Grade	Top MD ft	Bottom MD ft	Top TVD ft	Bottom TVD ft
4 1/2" Production Casing	NEW		4.5	4.	11.6				7233.		
8 3/4" Open Hole				8.75				1650.	7233.		
9 5/8" SURFACE CASING	Used		9.625	9.001	32.3				1650.		

Sales/Rental/3<sup>rd</sup> Party (HES)

Description	Qty	Qty uom	Depth	Supplier
PLUG,CMTG,TOP,4 1/2,HWE,3.65 MIN/4.14 MA	1	EA		
CENTRALIZER ASSY - API - 4-1/2 CSG X	36	EA		
SHOE,FLT,4-1/2 8RD,2-3/4 SSII	1	EA		
CLR,FLT,4-1/2 8RD,9.5-13.5PPF,2-3/4	1	EA		
KIT,HALL WELD-A	2	EA		
CLAMP - LIMIT - 4-1/2 - HINGED -	1	EA		

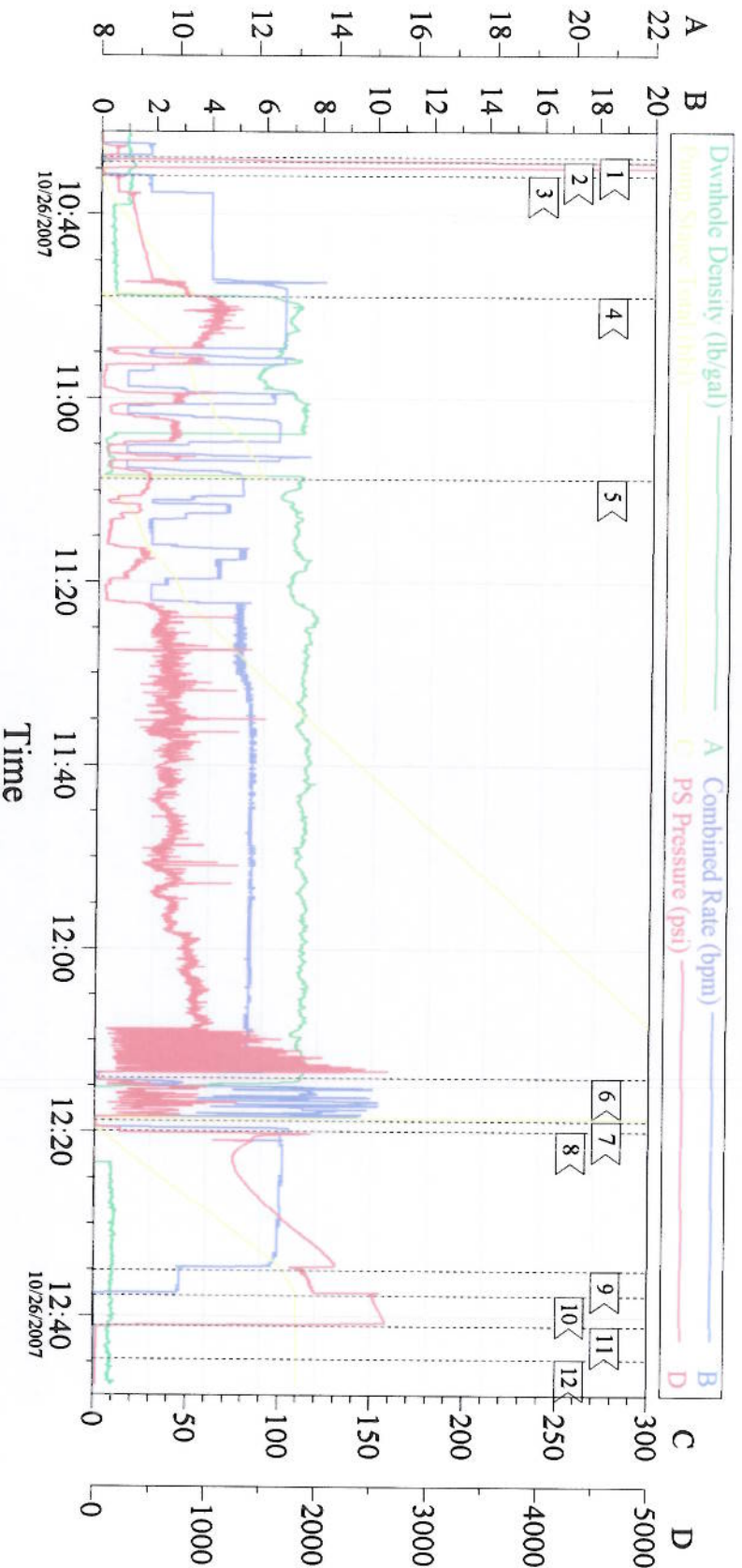
## Tools and Accessories

Type	Size	Qty	Make	Depth	Type	Size	Qty	Make	Depth	Type	Size	Qty	Make
Guide Shoe	4.5	1			Packer					Top Plug	4.5	1	
Float Shoe	4.5	1			Bridge Plug					Bottom Plug			
Float Collar	4.5	1			Retainer					SSR plug set			
Insert Float										Plug Container	4.5	1	
Stage Tool										Centralizers	4.5	36	

Miscellaneous Materials													
Gelling Agt		Conc		Surfactant		Conc		Acid Type		Qty		Conc	%
Treatment Fld		Conc		Inhibitor		Conc		Sand Type		Size		Qty	
Fluid Data													
Stage/Plug #: 1													
Fluid #	Stage Type	Fluid Name			Qty	Qty uom	Mixing Density lbm/gal	Yield ft <sup>3</sup> /sk	Mix Fluid Gal/sk	Rate bbl/min	Total Mix Fluid Gal/sk		
1	SPACER				50.0	bbl	8.4	.0	.0	6.0			
2	LEAD CEMENT	VARICEM (TM) CEMENT (452009)			310.0	sacks	12.8	1.55	7.15	8.0	7.15		
3	TAIL CEMENT	VARICEM (TM) CEMENT (452009)			1200.0	sacks	13.4	1.37	5.77	8.0	5.77		
4	2% KCL DISPLACEMENT				112.1	bbl	8.44	.0	.0	10.0			
Calculated Values			Pressures			Volumes							
Displacement	111.4	Shut In: Instant				Lost Returns	NO	Cement Slurry	397.6	Pad			
Top Of Cement	??	5 Min				Cement Returns	0	Actual Displacement	111	Treatment			
Frac Gradient		15 Min				Spacers	50	Load and Breakdown		Total Job			
Rates													
Circulating		Mixing		6		Displacement	7		Avg. Job				
Cement Left In Pipe	Amount	47.31	Reason	Shoe Joint									
Frac Ring # 1 @	ID		Frac ring # 2 @	ID		Frac Ring # 3 @	ID		Frac Ring # 4 @	ID			
The Information Stated Herein Is Correct						Customer Representative Signature							



# 4 1/2 LONGSTRING



## Event Log

1 < START JOB	10:33:47	2 < TEST LINES	10:34:18	3 < PUMP H2O SPACER	10:35:49
4 < PUMP LEAD CEMENT	10:48:54	5 < PUMP TAIL CEMENT	11:08:46	6 < WASH PUMPS AND LINES	12:14:07
7 < DROP TOP PLUG	12:18:49	8 < PUMP DISPLACEMENT	12:19:55	9 < SLOW RATE	12:35:04
10 < LAND PLUG	12:37:50	11 < CHECK FLOATS	12:41:09	12 < END JOB	12:44:43

Customer: CHEVRON  
Well Desc: 598-35-AV-12  
Company Rep: RANDY MORGAN

Job Date: 10-26-07  
Job Type: PRODUCTION

Ticket #: 5427316  
Cementier: Brandon Reeves

Cem Win V1 7.1  
26-Oct-07 13:02