

HALLIBURTON

CHEVRON - MID-CONTINENT EBIZ

**SKR 598-35-AV-12
PICEANCE
Garfield County , Colorado**

Cement Surface Casing

Cementing Post Job Report

The Road to Excellence Starts with Safety

Sold To #: 338668	Ship To #: 338668	Quote #:	Sales Order #: 5419110
Customer: CHEVRON - MID-CONTINENT EBIZ	Customer Rep: Morgan, George		
Well Name: SKR	Well #: 598-35-AV-12	API/UWI #: 05-045-14391	
Field: PICEANCE	City (SAP): Debeque	County/Parish: Garfield	State: Colorado
Contractor: CHEVRON	Rig/Platform Name/Num: H&P318		
Job Purpose: Cement Surface Casing			
Well Type: Development Well	Job Type: Cement Surface Casing		
Sales Person: MURPHY, SHAUNA	Srv Supervisor: GASAWAY, SCOTT	MBU ID Emp #: 246149	

Job Personnel

HES Emp Name	Exp Hrs	Emp #	HES Emp Name	Exp Hrs	Emp #	HES Emp Name	Exp Hrs	Emp #
BUNNELL, MATTHEW A	14.0	266585	GASAWAY, SCOTT Eldon	14.0	246149	KING, JAMES Nathan	14.0	369596
OLDS, RYAN John	14.0	418018						

Equipment

HES Unit #	Distance-1 way	HES Unit #	Distance-1 way	HES Unit #	Distance-1 way	HES Unit #	Distance-1 way
	120 mile	10025037C	120 mile	10025118	120 mile	10026594C	120 mile
10026607C	120 mile	10547378	120 mile	10616651C	120 mile	10829461	120 mile
10973565	120 mile						

Job Hours

Date	On Location Hours	Operating Hours	Date	On Location Hours	Operating Hours	Date	On Location Hours	Operating Hours
10-13-07	11	0	10-14-07	3				

TOTAL Total is the sum of each column separately

Job				Job Times			
Formation Name				Date	Time	Time Zone	
Formation Depth (MD) Top		Bottom		Called Out	13 - Oct - 2007	08:00	MST
Form Type		BHST		On Location	13 - Oct - 2007	13:00	MST
Job depth MD	1634. ft	Job Depth TVD	1634. ft	Job Started	14 - Oct - 2007	01:00	MST
Water Depth		Wk Ht Above Floor	4. ft	Job Completed	14 - Oct - 2007	01:58	MST
Perforation Depth (MD) From		To		Departed Loc	14 - Oct - 2007	04:00	MST

Well Data

Description	New / Used	Max pressure psig	Size in	ID in	Weight lbm/ft	Thread	Grade	Top MD ft	Bottom MD ft	Top TVD ft	Bottom TVD ft
9 5/8	Used		9.625	9.001	32.3		H-40		1650.		
12 1/4				12.25					1650.		

Sales/Rental/3rd Party (HES)

Description	Qty	Qty uom	Depth	Supplier
PLUG,CMTG,TOP,9 5/8,HWE,8.16 MIN/9.06 MA	1	EA		
CENTRALIZER-9-5/8"-CSG-12 1/4"-HINGED	15	EA		
CLP,LIM,9 5/8,HNGD,FRICT GRIP,WTH DRAW	2	EA		
KIT,HALL WELD-A	4	EA		
CLR,FLT,9-5/8 8RD 29.3-40PPF,2-3/4	1	EA		

Tools and Accessories

Type	Size	Qty	Make	Depth	Type	Size	Qty	Make	Depth	Type	Size	Qty	Make
Guide Shoe					Packer					Top Plug	9 5/8	1	HWE
Float Shoe	9 5/8	1	Halliburton		Bridge Plug					Bottom Plug			
Float Collar	9 5/8	1	Halliburton		Retainer					SSR plug set			
Insert Float										Plug Container	9 5/8	1	Halliburton

HALLIBURTON**Cementing Job Summary**

Stage Tool										Centralizers	9 5/8	15	Halliburton
Miscellaneous Materials													
Gelling Agt		Conc		Surfactant		Conc		Acid Type		Qty		Conc	%
Treatment Fld		Conc		Inhibitor		Conc		Sand Type		Size		Qty	
Fluid Data													
Stage/Plug #: 1													
Fluid #	Stage Type	Fluid Name			Qty	Qty uom	Mixing Density lbm/gal	Yield ft ³ /sk	Mix Fluid Gal/sk	Rate bbl/min	Total Mix Fluid Gal/sk		
1	Dye spacer/Polyflake Spacer				40.00	bbl	8.33	.0	.0	.0			
	10 lbm/bbl	POLY-E-FLAKE (101216940)											
2	Lead Cement	VERSACEM (TM) SYSTEM (452010)			304.0	sacks	12.3	2.38	13.75		13.41		
	13.409 Gal	FRESH WATER											
3	Tail Cement	VERSACEM (TM) SYSTEM (452010)			150.0	sacks	12.8	2.11	11.75		11.45		
	11.447 Gal	FRESH WATER											
4	DISPLACEMENT					bbl	.	.0	.0	.0			
5	TOPOUT	CMT - STANDARD TYPE I / II CEMENT (101439798)				sacks	14.5	1.39	6.8		6.8		
	94 lbm	TYPE I / II CEMENT, BULK (101439798)											
	6.796 Gal	FRESH WATER											
Calculated Values				Pressures				Volumes					
Displacement	122	Shut In: Instant			Lost Returns	NO	Cement Slurry	185.1	Pad				
Top Of Cement	SURFACE	5 Min			Cement Returns	40	Actual Displacement	122	Treatment				
Frac Gradient		15 Min			Spacers	40	Load and Breakdown		Total Job	347.1			
Rates													
Circulating	RIG	Mixing		8	Displacement	10	Avg. Job		8				
Cement Left In Pipe	Amount	48.93 ft	Reason	Shoe Joint									
Frac Ring # 1 @	ID	Frac ring # 2 @	ID	Frac Ring # 3 @	ID	Frac Ring # 4 @	ID						
The Information Stated Herein Is Correct					Customer Representative Signature								

The Road to Excellence Starts with Safety

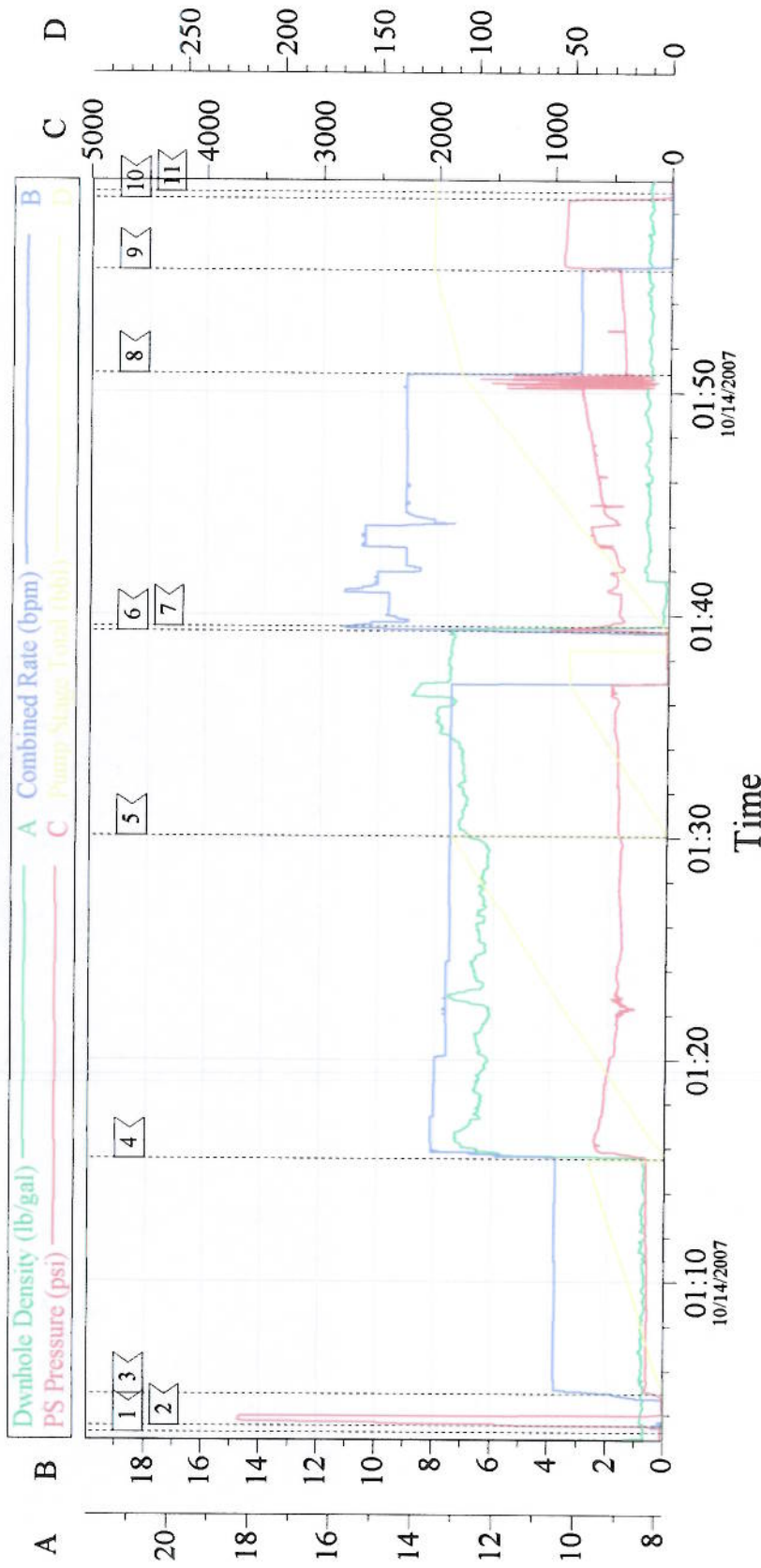
Sold To #: 338668		Ship To #: 338668		Quote #:		Sales Order #: 5419110	
Customer: CHEVRON - MID-CONTINENT EBIZ				Customer Rep: Morgan, George			
Well Name: SKR			Well #: 598-35-AV-12		API/UWI #: 05-045-14391		
Field: PICEANCE		City (SAP): Debeque		County/Parish: Garfield		State: Colorado	
Legal Description:							
Lat: N 0 deg. OR N 0 deg. 0 min. 0 secs.				Long: E 0 deg. OR E 0 deg. 0 min. 0 secs.			
Contractor: CHEVRON			Rig/Platform Name/Num: H&P318				
Job Purpose: Cement Surface Casing						Ticket Amount:	
Well Type: Development Well			Job Type: Cement Surface Casing				
Sales Person: MURPHY, SHAUNA			Srv Supervisor: GASAWAY, SCOTT			MBU ID Emp #: 246149	

Activity Description	Date/Time	Cht #	Rate bbl/min	Volume bbl		Pressure psig		Comments
				Stage	Total	Tubing	Casing	
Call Out	10/13/2007 08:00							
Depart Yard Safety Meeting	10/13/2007 11:20							
Crew Leave Yard	10/13/2007 11:30							
Arrive At Loc	10/13/2007 13:00							TD-1650, TP-1634, SJ-48.93, MW-8.8, 9 5/8, 36#, 12 1/4 HOLE, K-55
Safety Meeting - Assessment of Location	10/13/2007 13:05							
Safety Meeting - Pre Rig-Up	10/13/2007 22:50							
Rig-Up Equipment	10/13/2007 23:00							
Rig-Up Completed	10/14/2007 00:00							
Safety Meeting - Pre Job	10/14/2007 00:15							
Start Job	10/14/2007 01:01							
Test Lines	10/14/2007 01:01						3000.0	
Pump Spacer 2	10/14/2007 01:02		4	40			115.0	ADDED POLYFLAKE TO LAST 20 BBL OF 40 BBLS OF SPACER
Pump Lead Cement	10/14/2007 01:13		8	128.8			550.0	12.3 PPG, 2.38 YIELD, 13.75 GAL/SK, 304 SKS
Pump Tail Cement	10/14/2007 01:30		8	56.3			450.0	12.8 PPG, 2.11 YIELD, 11.75, 150 SKS
Shutdown	10/14/2007 01:35							
Drop Top Plug	10/14/2007 01:36							
Pump Displacement	10/14/2007 01:37		10				700.0	

Cementing Job Log

Activity Description	Date/Time	Cht #	Rate bbl/ min	Volume bbl		Pressure psig		Comments
				Stage	Total	Tubing	Casing	
Pump Displacement	10/14/2007 01:50		3	110			400.0	SLOW RATE
Bump Plug	10/14/2007 01:54		3	122			450.0	PRESSUREDUP TO 950
Check Floats	10/14/2007 01:57							1/2 BBL BACK, HOLDING
End Job	10/14/2007 01:58							
Post-Job Safety Meeting (Pre Rig-Down)	10/14/2007 02:10							
Rig-Down Equipment	10/14/2007 02:15							
Rig-Down Completed	10/14/2007 03:45							
Safety Meeting - Departing Location	10/14/2007 03:45							
Depart Location for Service Center or Other Site	10/14/2007 04:00							
Comment	10/14/2007 04:00							THANKS FROM SCOTT GASAWAY AND CREW
Comment	10/14/2007 04:00							GOOD RETURNS WHILE PUMPING JOB,NO PIPE MOVEMENT, TOP DRIVE WAS SET ON HEAD,

9 5/8 SURFACE



Event Log

1	START JOB	01:03:14	2	TEST LINES	01:03:32	3	PUMP H2O SPACER	01:04:57
4	PUMP LEAD CEMENT	01:15:31	5	PUMP TAIL CEMENT	01:30:03	6	SHUT DOWN/ DROP PLUG	01:39:16
7	PUMP DISPLACEMENT	01:39:29	8	SLOW RATE	01:50:49	9	BUMP PLUG	01:55:26
10	CHECK FLOAT	01:58:37	11	END JOB	01:58:54			

Customer:	CHEVRON	Job Date:	10-14-07	Ticket #:	5419110
	TRUCK/OPERATOR ELITE #4/JIMMY KING	CEMENTER	SCOTT GASAWAY	ADC USED	YES
LEASE	SKR	WELL #	598-35-AV-12	CO REP	GEORGE MORGAN

CemWin v1.5.0
14-Oct-07 02:32