

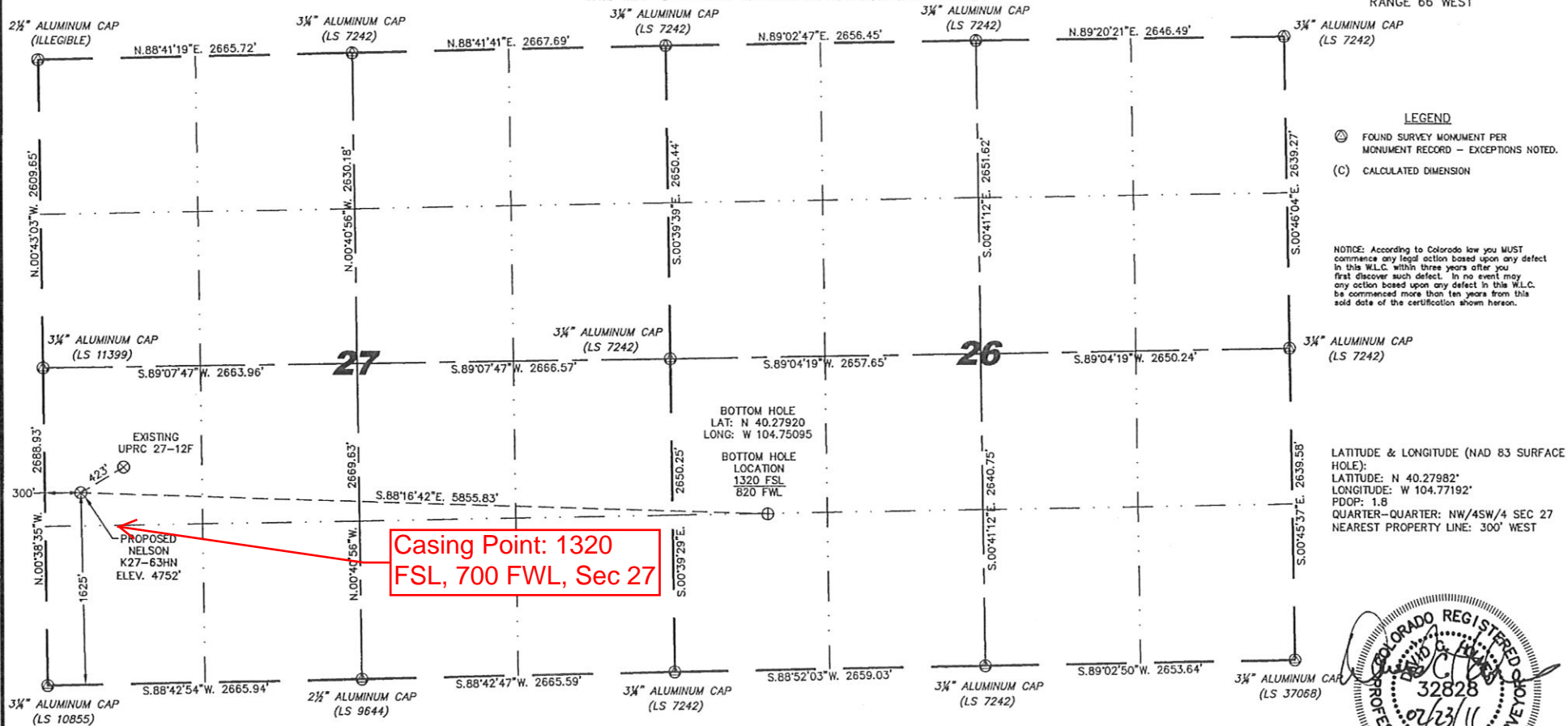
Steil Surveying Services, LLC

1102 West 19th Street P.O. BOX 2073

Cheyenne, Wyoming 82001

WELL LOCATION CERTIFICATE  
THIS MAP DOES NOT REPRESENT A BOUNDARY SURVEY

SECTION 26 & 27  
TOWNSHIP 4 NORTH  
RANGE 66 WEST



**LEGEND**  
 (A) FOUND SURVEY MONUMENT PER MONUMENT RECORD - EXCEPTIONS NOTED.  
 (C) CALCULATED DIMENSION

NOTICE: According to Colorado law you MUST commence any legal action based upon any defect in this W.L.C. within three years after you first discover such defect. In no event may any action based upon any defect in this W.L.C. be commenced more than ten years from this said date of the certification shown hereon.

LATITUDE & LONGITUDE (NAD 83 SURFACE HOLE):  
 LATITUDE: N 40.27982°  
 LONGITUDE: W 104.77192°  
 PDOP: 1.8  
 QUARTER-QUARTER: NW/4SW/4 SEC 27  
 NEAREST PROPERTY LINE: 300' WEST

IN ACCORDANCE WITH A REQUEST FROM ERIK VAN DECAR - NOBLE ENERGY INC., STEIL SURVEYING SERVICES, LLC HAS DETERMINED THE LOCATION OF THE NELSON K27-63HN WELL TO BE 1625' FSL, 300' FWL, AS MEASURED AT NINETY (90) DEGREES FROM THE SECTION LINES, SECTION 27, TOWNSHIP 4 NORTH, RANGE 66 WEST, 6TH PRINCIPLE MERIDIAN, WELD COUNTY, COLORADO.

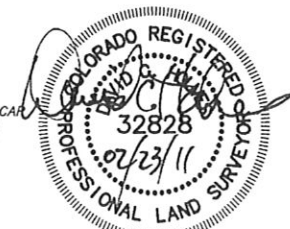
I HEREBY CERTIFY THAT THIS WELL LOCATION CERTIFICATE WAS PREPARED BY ME, OR UNDER MY DIRECT SUPERVISION, THAT THE FIELD WORK WAS COMPLETED ON 02/18/2011, FOR AND ON BEHALF OF NOBLE ENERGY INC., THAT IT IS NOT A LAND SURVEY PLAT OR AN IMPROVEMENT SURVEY PLAT, AND THAT IT IS NOT TO BE RELIED UPON FOR ESTABLISHMENT OF FENCE, BUILDING, OR OTHER FUTURE IMPROVEMENT LINES.

NOTES:

- 1) BASIS OF BEARINGS FOR THIS MAP ARE BASED UPON GPS OBSERVATIONS MADE ON 02/18/2011 BETWEEN MONUMENTS LOCATED AT THE SOUTHEAST SECTION CORNER AND THE NORTHEAST SECTION CORNER OF SAID SECTION AND WITH ALL BEARINGS SHOWN HEREON RELATIVE THERETO.
- 2) COORDINATES SHOWN ARE COLORADO STATE PLANE (NORTH ZONE) NAD 83.
- 3) ELEVATIONS ARE BASED UPON NGS OPUS SOLUTION NAVD 88 DATUM.
- 4) THE NEAREST EXISTING WELL IS: UPRC 27-12F, 423' NORTHEAST.
- 5) SEE LOCATION DRAWING FOR ALL IMPROVEMENTS WITHIN VISIBLE IMPROVEMENTS LIMIT.
- 6) THE LOCATION FALLS IN IRRIGATED CROP LAND.

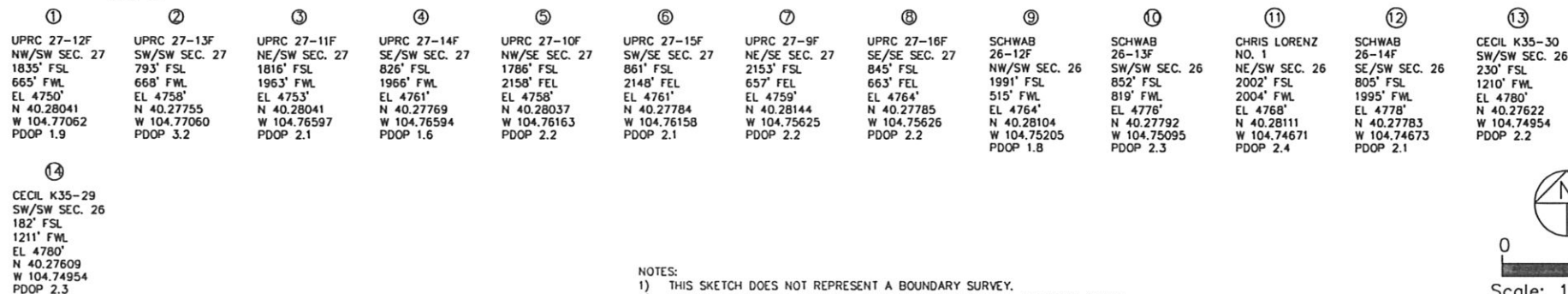


0 1000  
 Scale: 1" = 1000'



Completed 02/21/2011  
 David C. Holmes  
 Professional Land Surveyor Registration No. 32828  
 State of Colorado  
 JOB #: 11086

SECTIONS 27  
TOWNSHIP 4 NORTH  
RANGE 66 WEST



NOTES:  
1) THIS SKETCH DOES NOT REPRESENT A BOUNDARY SURVEY.  
2) THE DATUM FOR THE LATITUDES AND LONGITUDES ON THIS SKETCH IS NAD83.

