

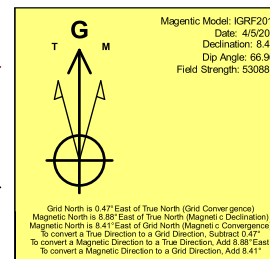
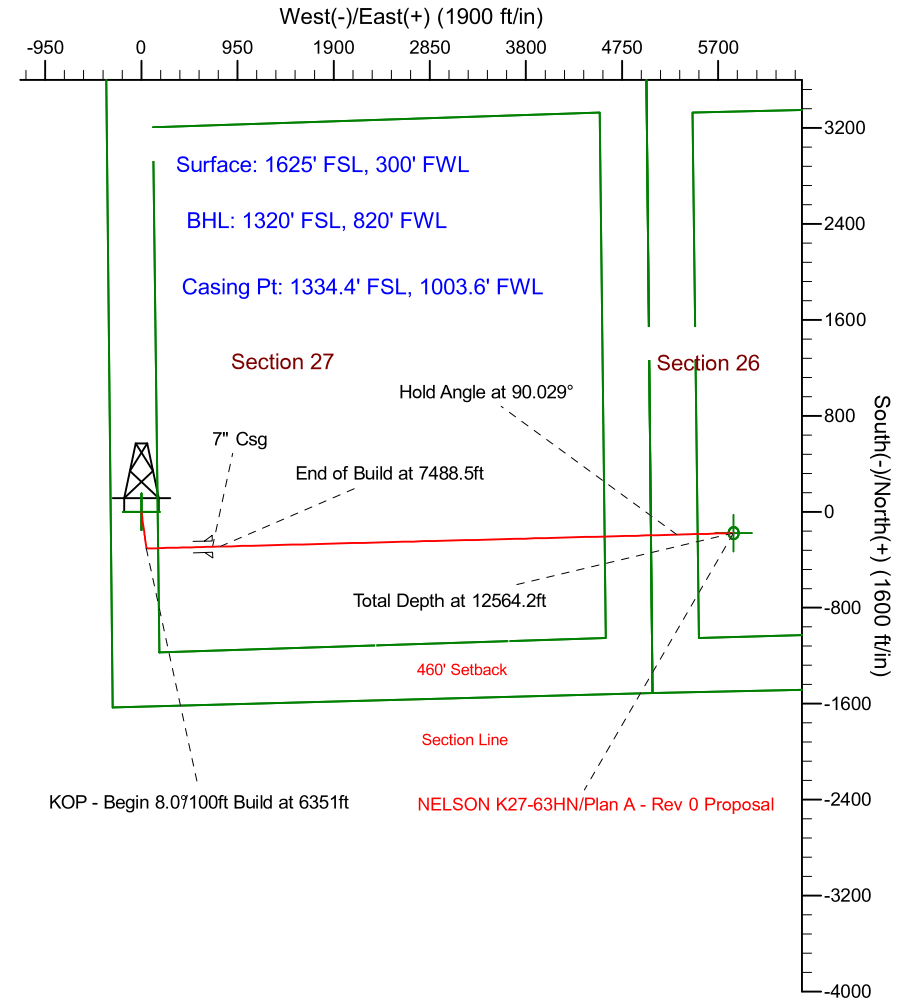
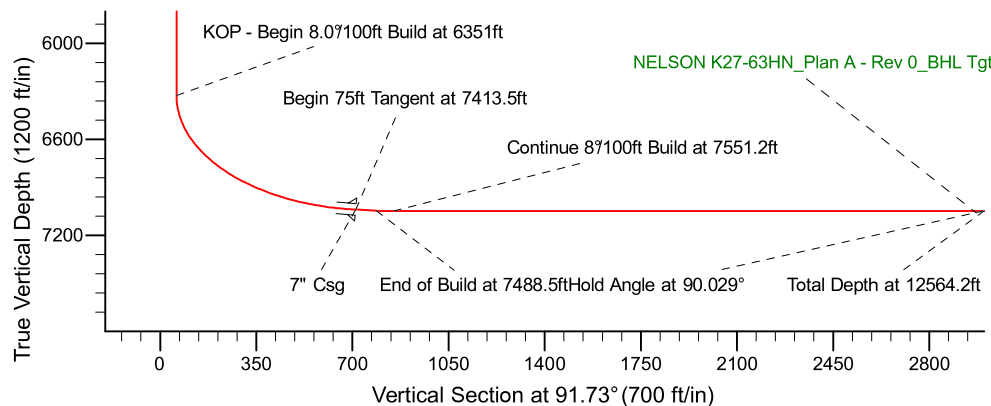
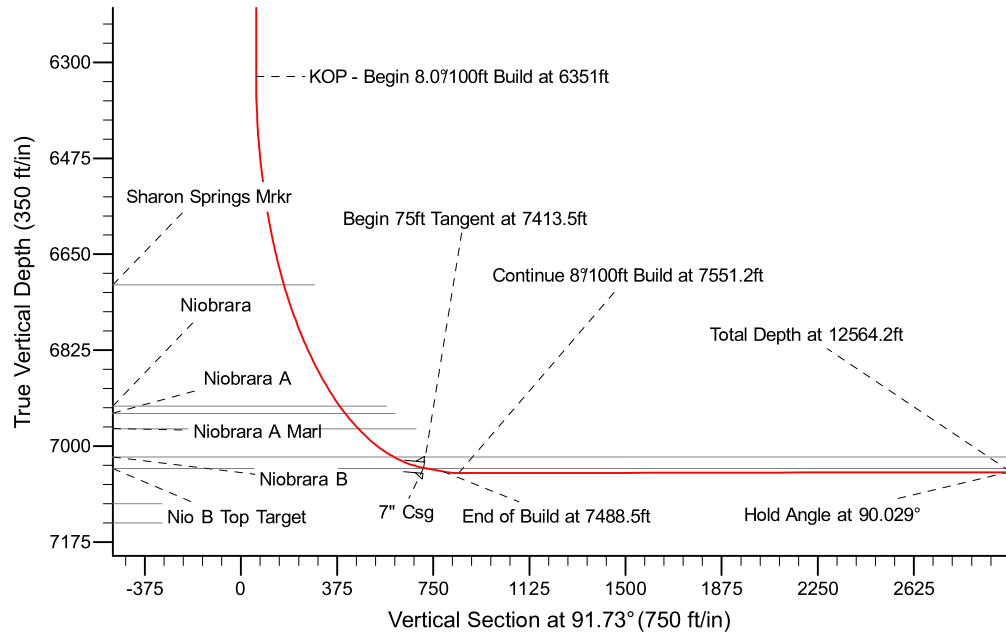
Project: Weld County Colorado (NAD 83)
 Site: Sec. 27, T4N, R66W
 Well: NELSON K27-63HN
 Wellbore: Plan A - Rev 0 (PERMITTING PLAN ONLY)
 Design: Plan A - Rev 0 Proposal

Noble Energy

HALLIBURTON
 Sperry Drilling

SECTION DETAILS

Sec	MD	Inc	Azi	TVD	+N/-S	+E/-W	Dleg	TFace	VSec	Target
1	0.0	0.00	0.00	0.0	0.0	0.0	0.00	0.00	0.0	
2	2500.0	0.00	0.00	2500.0	0.0	0.0	0.00	0.00	0.0	
3	2899.9	10.00	170.69	2897.9	-34.4	5.6	2.50	170.69	6.7	
4	4279.1	10.00	170.69	4256.1	-270.6	44.4	0.00	0.00	52.5	
5	4679.0	0.00	0.00	4654.0	-305.0	50.0	2.50	180.00	59.2	
6	6351.0	0.00	0.00	6326.0	-305.0	50.0	0.00	0.00	59.2	
7	7413.5	85.00	88.74	7039.5	-290.6	703.6	8.00	88.74	712.1	
8	7488.5	85.00	88.74	7046.0	-289.0	778.3	0.00	0.00	786.7	
9	7551.4	90.03	88.74	7048.7	-287.6	841.1	8.00	0.00	849.4	
10	12564.2	90.03	88.73	7046.0	-177.1	5852.7	0.00	-58.45	5855.4	NELSON K27-63HN Plan A - Rev 0 BHL Tgt-



WELL DETAILS: NELSON K27-63HN (NAD83 Geodetic System)			
		Ground Level: 4752.0	
Northing	Easting	Latitude	Longitude
410143.86	976317.50	40° 16' 47.352 N	104° 46' 18.912 W
Plan: Plan A - Rev 0 Proposal (NELSON K27-63HN/Plan A - Rev 0 (PERMITTING PLAN ONLY))			
Created By: Erasmo Mendoza		Date: 9:42, April 07 2011	
<div>OK to submit with 2A as per Noble Drilling 4/7/2011 09:05</div>			