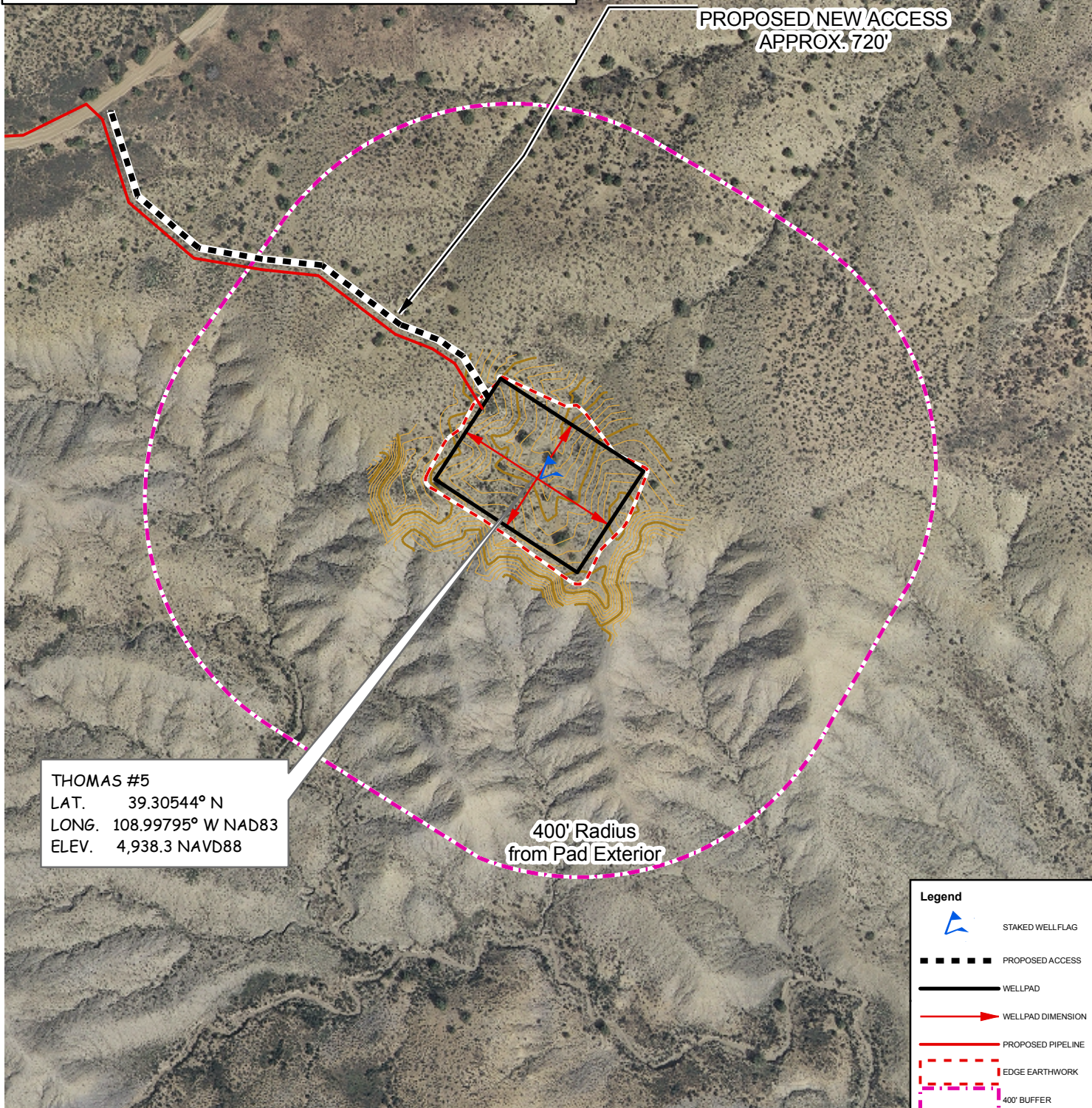


**ADDENDUM - Existing Improvements Within 400' of Pad**  
**SOUTHWESTERN ENERGY VENTURES COMPANY, LLC**  
**THOMAS #5** 3,173' FSL, 847' FEL  
**SECTION 4, T-9-S, R-104-W, 6TH P.M.,**  
**MESA COUNTY COLORADO**  
**ELEVATION AT STAKE = 4,938.3 NAVD88**



PROPOSED NEW ACCESS  
 APPROX. 720'

THOMAS #5  
 LAT. 39.30544° N  
 LONG. 108.99795° W NAD83  
 ELEV. 4,938.3 NAVD88

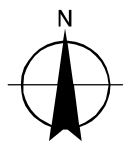
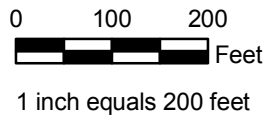
400' Radius  
 from Pad Exterior

**Legend**

- STAKED WELL FLAG
- PROPOSED ACCESS
- WELLPAD
- WELLPAD DIMENSION
- PROPOSED PIPELINE
- EDGE EARTHWORK
- 400' BUFFER

SEVO05\_IMP\_ADD1.mxd 2011\_04\_10

**JMAS**  
 JOHNSON MAPPING  
 AND SURVEYING, LLC  
 PO BOX 2174  
 FARMINGTON, NM 87499-2174  
 505-360-8029  
 ALEX@JOHNSONMAPPING.BIZ



**NOTES:**

- 1- DATE OF FIELD SURVEY 5 November, 2010-24Feb, 2011
- 2- THE LOCATIONS OF UNDERGROUND UTILITIES DEPICTED ARE APPROXIMATE. ACTUAL LOCATIONS OF UNDERGROUND UTILITIES *MUST* BE FIELD VERIFIED PRIOR TO CONSTRUCTION.
- 3- CONTOUR INTERVAL = 2 FT.,