

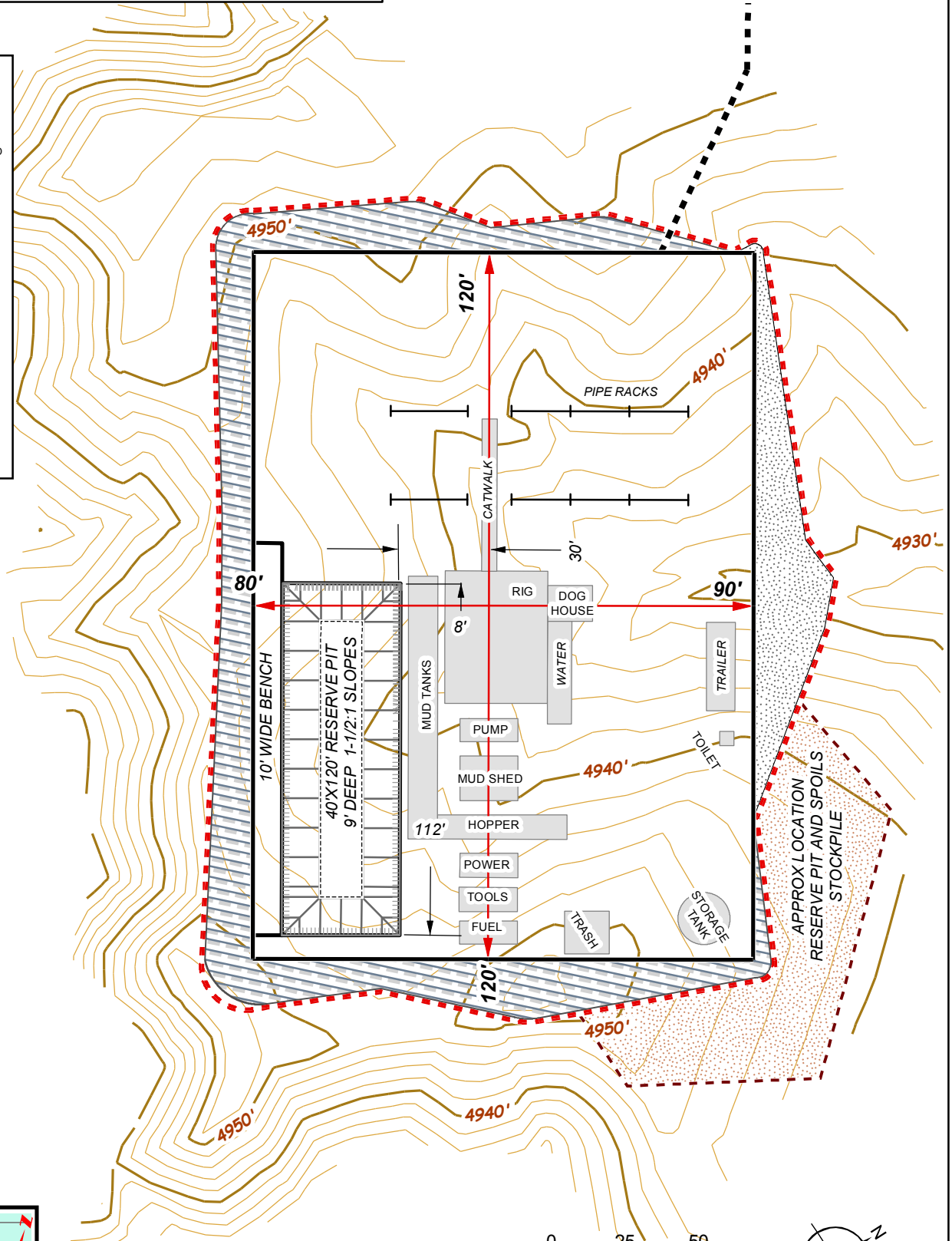
PROPOSED RIG LAYOUT
SOUTHWESTERN ENERGY VENTURES COMPANY, LLC
THOMAS #5 3,173' FSL, 847' FEL
SECTION 4, T-9-S, R-104-W, 6TH P.M.,
MESA COUNTY COLORADO
ELEVATION AT STAKE = 4,938.3 NAVD88

NOTES:

- 1-DATE OF FIELD SURVEY 24 Feb, 2011
- 2-THE LOCATIONS OF UNDERGROUND UTILITIES DEPICTED ARE APPROXIMATE. ACTUAL LOCATIONS OF UNDERGROUND UTILITIES MUST BE FIELD VERIFIED PRIOR TO CONSTRUCTION.
- 3- CONTOUR INTERVAL = 2 FT.,
- 4- UNGRADED ELEVATION AT STAKE = 4,938.3'
 PROPOSED DESIGN GRADE AT STAKE = 4,942.5'

Legend

- WELL STAKE
- PROPOSED ACCESS
- WELLCONNECT, SOLID
- PROPOSED WELL PAD
- WELLPAD DIMENSION
- TOTAL_DISTURB
- CUT_AREA
- FILL_AREA
- TOE PIT
- TOP PIT
- TRASH
- EQUIPMENT
- PIT PAD
- EDGE EARTHWORK
- PIT_STOCKPILE



SEV005_RIG.MXD 2011_04_10

JMAS
 JOHNSON MAPPING
 AND SURVEYING, LLC
 PO BOX: 2174
 FARMINGTON NM 87499-2174
 505-360-8029
 ALEX@JOHNSONMAPPING.BIZ

