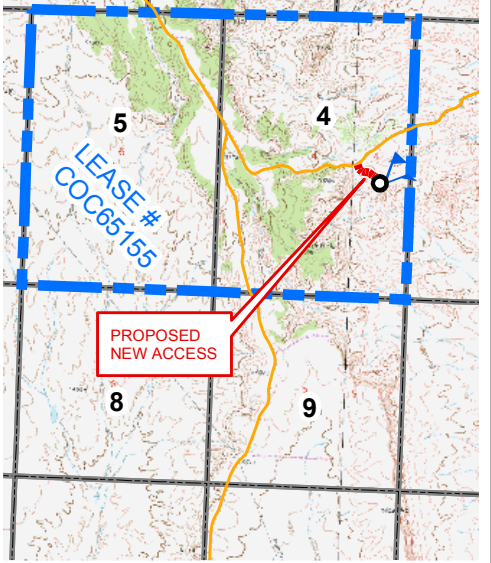


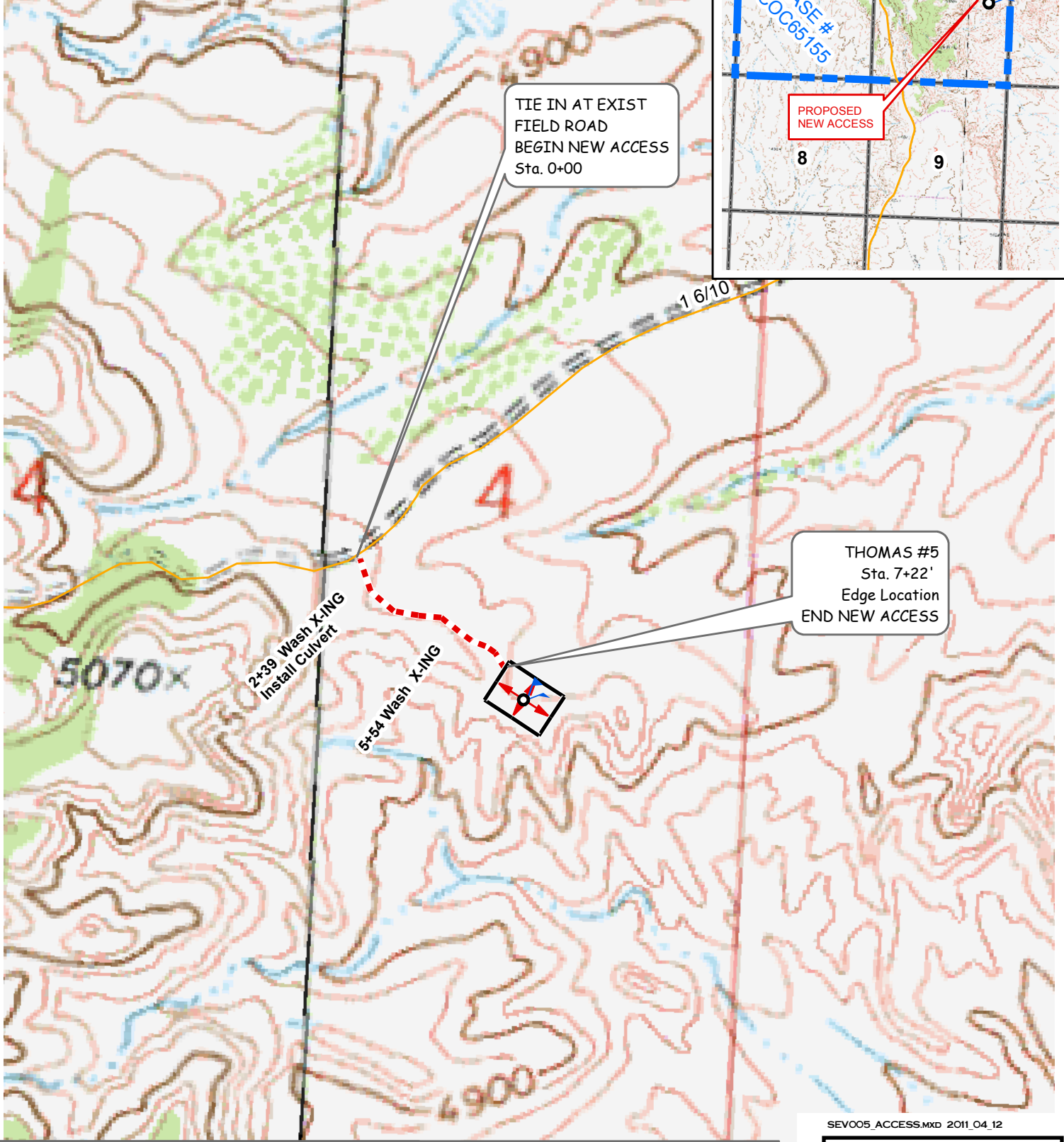
**PROPOSED ACCESS ROUTE**  
**SOUTHWESTERN ENERGY VENTURES COMPANY, LLC**  
**THOMAS #5** 3,173' FSL, 847' FEL  
**SECTION 4, T-9-S, R-104-W, 6TH P.M.,**  
**MESA COUNTY COLORADO**

1" = 1 mile

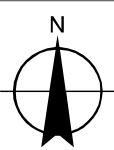
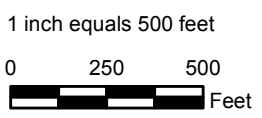


TIE IN AT EXIST  
 FIELD ROAD  
 BEGIN NEW ACCESS  
 Sta. 0+00

PROPOSED  
 NEW ACCESS



THOMAS #5  
 Sta. 7+22'  
 Edge Location  
 END NEW ACCESS



APPROX. NEW ACCESS  
 LENGTH = 722'

SEV005\_ACCESS.MXD 2011\_04\_12

**JMAS**  
 JOHNSON MAPPING  
 AND SURVEYING, LLC  
 PO BOX 2174,  
 FARMINGTON NM 87499-2174  
 505-360-8029  
 ALEX@JOHNSONMAPPING.BIZ