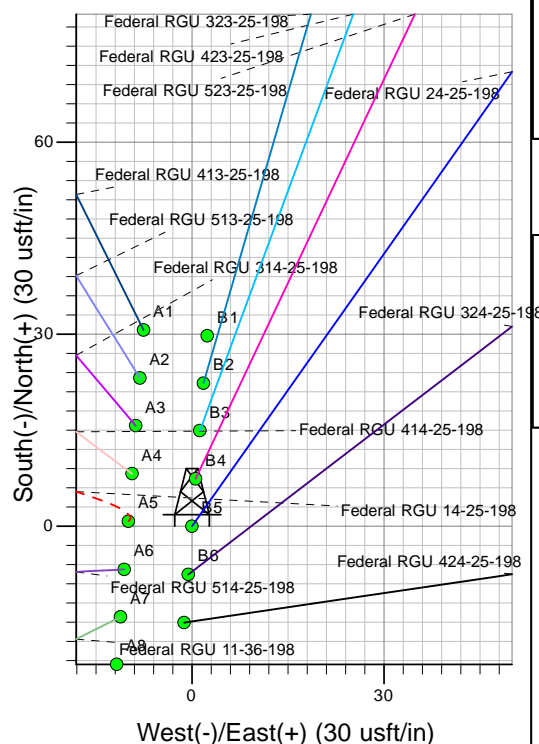
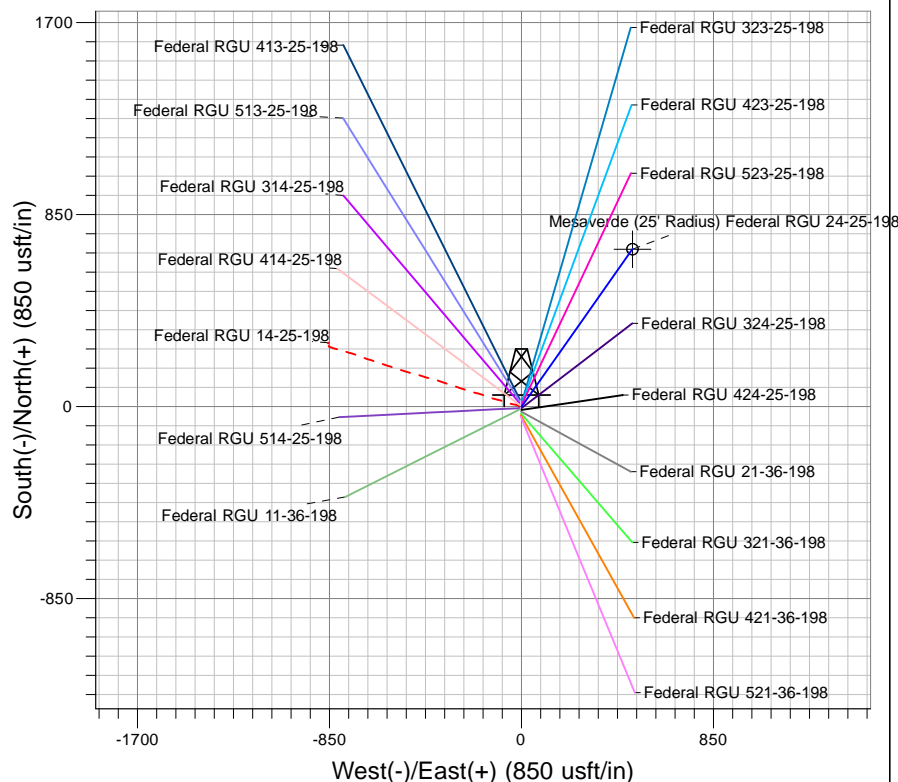
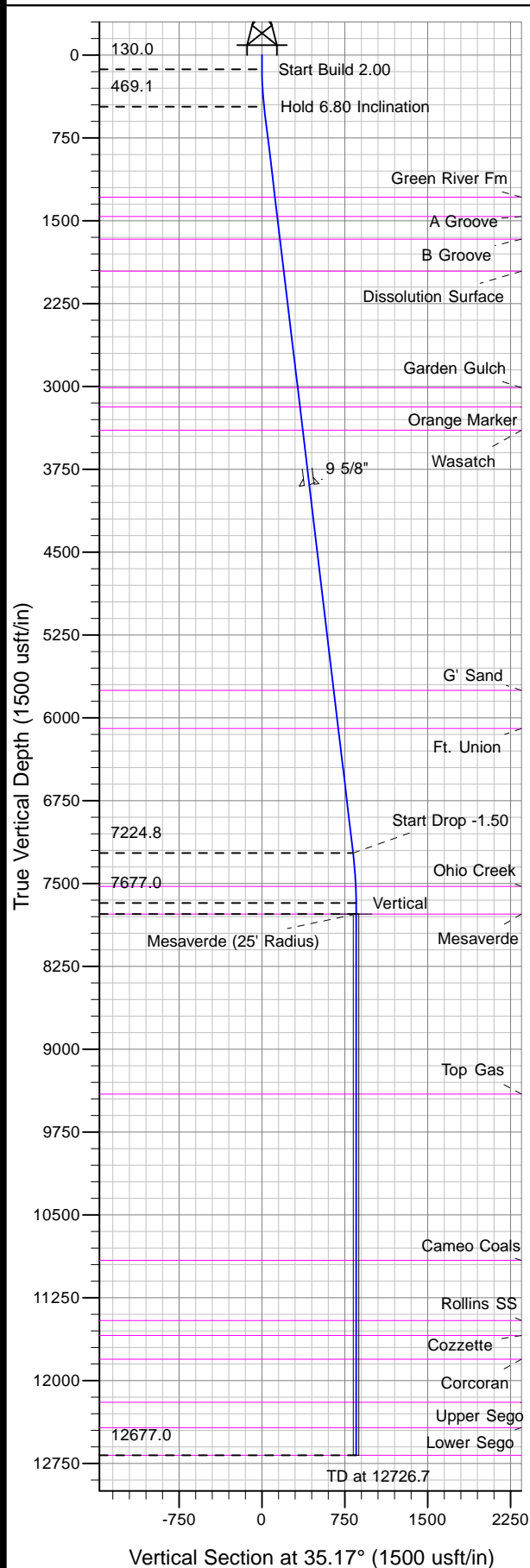




Well Name: Federal RGU 24-25-198
Surface Location: RGU 24-25-198 Pad
North American Datum 1983 , US State Plane 1983 , Colorado Central Zone
Ground Elevation: 6685.0
+N/-S +E/-W Northing Easting Latitude Longitude Slot
0.0 0.0 1775434.20 2201846.30 39° 55' 40.998 N 108° 20' 46.527 W B5
KELLY BUSHING @ 6707.0usft (Frontier 10 (22' RKB) kjs)



Project: RG 25-01S-098W
Site: RGU 24-25-198 Pad
Well: Federal RGU 24-25-198
Plan #2 28Mar11 kjs

Asimuths to True North
Magnetic North: 11.10°
Magnetic Field
Strength: 52878.4snT
Dip Angle: 66.15°
Date: 3/21/2007
Model: IGRF2005-10

ANNOTATIONS

TVD	MD	Inc	Azi	+N/-S	+E/-W	VSec	Departure	Annotation
130.0	130.0	0.00	0.00	0.0	0.0	0.0	0.0	Start Build 2.00
469.1	469.9	6.80	35.17	16.5	11.6	20.1	20.1	Hold 6.80 Inclination
7224.8	7273.5	6.80	35.17	674.8	475.5	825.5	825.5	Start Drop -1.50
7677.0	7726.7	0.00	0.00	696.8	491.0	852.4	852.4	Vertical
7777.0	7826.7	0.00	0.00	696.8	491.0	852.4	852.4	Mesaverde
12677.0	12726.7	0.00	0.00	696.8	491.0	852.4	852.4	TD at 12726.7