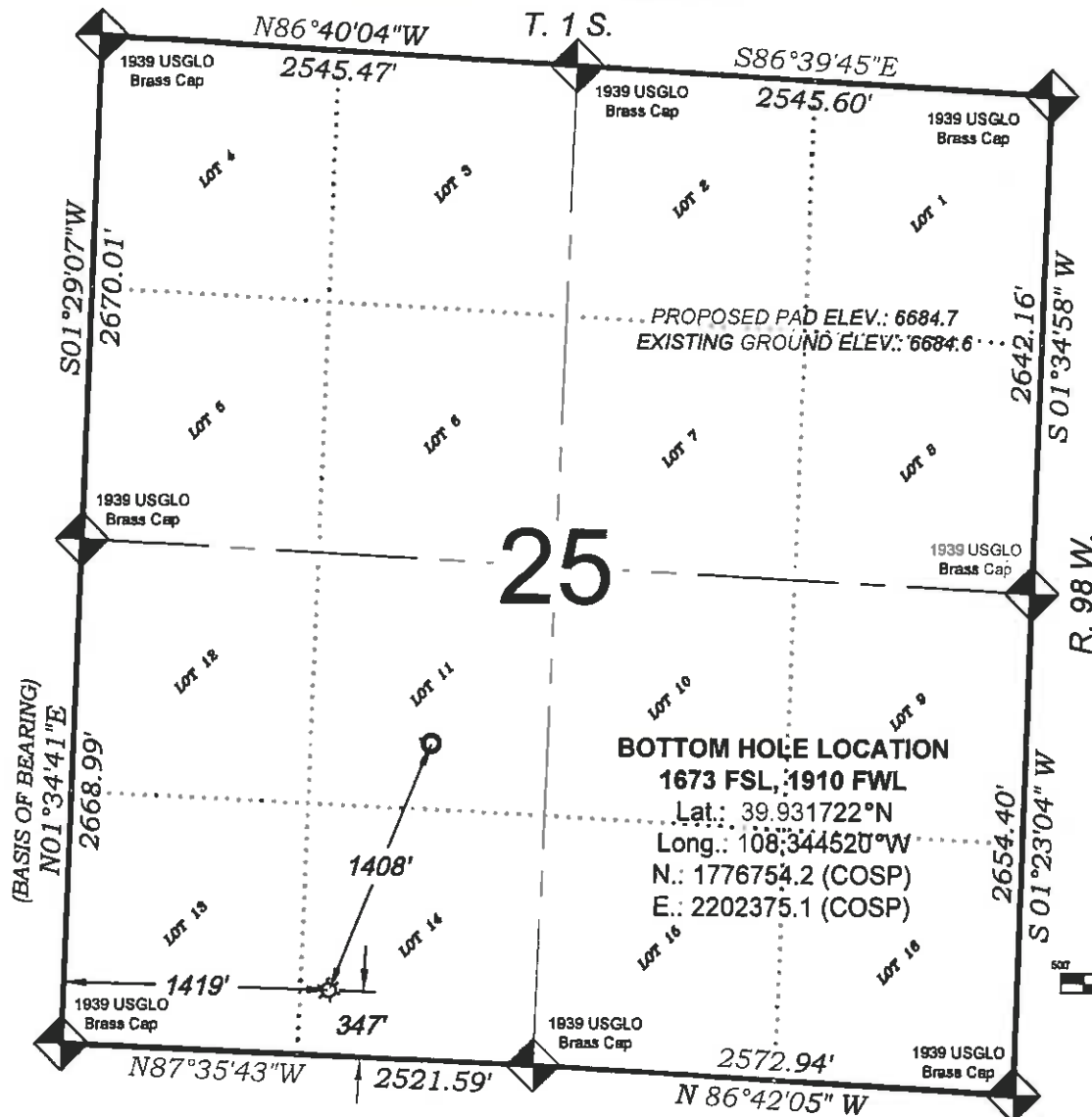


Federal RGU 423-25-198



347 FSL
1419 FWL
LATITUDE
39.928096°N
LONGITUDE
108.346253°W
NORTHING
1775449.1
EASTING
2201848.0

BOTTOM HOLE LOCATION

1673 FSL, 1910 FWL
Lat.: 39.931722°N
Long.: 108.344520°W
N.: 1776754.2 (COSP)
E.: 2202375.1 (COSP)

GRAPHIC SCALE IN FEET
1 INCH = 1000 FEET

- LEGEND -

FIELD LOCATED SECTION
MONUMENTS AS DESCRIBEDFIELD SURVEYED
WELL LOCATION

CALCULATED BOTTOM HOLE LOCATION

**CALCULATED SECTION
CORNER LOCATION**

NOTES

- 1) **ELEVATIONS BASED ON N.A. V.D. 1988 PUBLISHED COORDINATES.**
- 2) **LATITUDES AND LONGITUDES ARE BASE ON NAD 83, PUBLISHED COORDINATES**
- 3) **STATE PLANE COORDINATES ARE BASED ON COLORADO CENTRAL ZONE, U.S. SURVEY FEET.**
- 4) **ELEVATION MASK SET TO 15°**
- 5) **GPS OPERATOR J. KIRKPATRICK, OBSERVED A PDOP OF 1.0 FOR SURVEY POINT NUMBER 260.**
- 6) **SURFACE AND BOTTOM HOLE LOCATIONS ARE MEASURED 90° FROM SECTION LINES.**

WELL LOCATION PLAT Prepared for:

Williams Williams Production, RMT

SE1/4 SW1/4, SECTION 25
T. 1 S., R. 98 W. of the 6th. P.M.
Rio BLANCO COUNTY, COLORADO

SURVEYORS STATEMENT

I, MICHAEL J. LANGHORNE, A REGISTERED LAND SURVEYOR IN THE STATE OF COLORADO DO HEREBY CERTIFY THAT THE SURVEY SHOWN HEREON WAS PREPARED UNDER MY DIRECT SUPERVISION AND HAS BEEN STAKED ON THE GROUND AS SHOWN ON THE PLAT AND CHECKING THAT THIS MAP IS A TRUE REPRESENTATION THEREOF.

MICHAEL J. LANGHORNE, COLORADO REGISTRATION NO. 36572
FOR AND ON BEHALF OF
BOOKCLIFF SURVEY SERVICES, INC.

REFERENCES

- 1) DEPENDENT RESURVEY AND SUBDIVISION T. 1 S., R. 98 W., 6 th P.M (GLO PLAT)
2) U.S.G.S. QUAD: Square S Ranch, CO

SURVEY DATE: 2/24/11

MAP DATE: 2/25/11

SCALE: $1" = 1000'$

PLAT: 1 of 1

PROJECT: Williams

520 East University
Rivers, California 91400
Ph. (770) 625-1330
Fax (770) 625-2773

BOOKCLIFF
Survey Services, Inc.