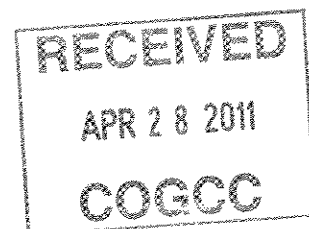
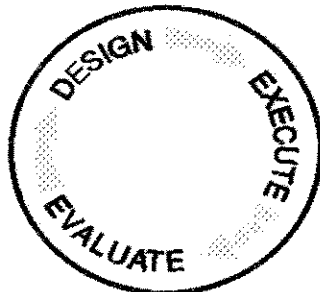




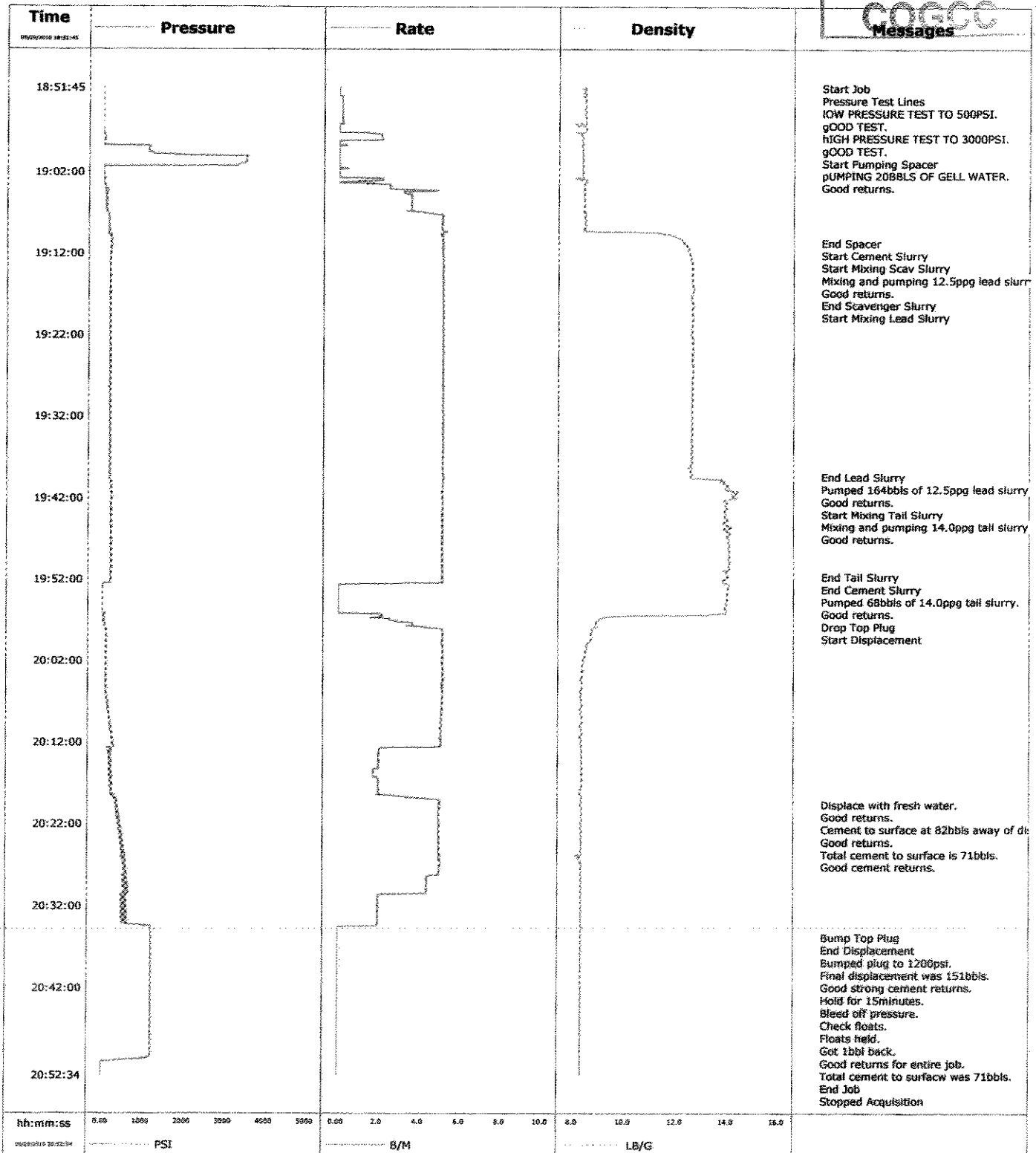
# Schlumberger



**DATE :** September 29, 2010  
**SERVICE TYPE :** 9 5/8" SURFACE  
**CLIENT :** CHEVRON  
**TREATMENT # :** BAD4-00194  
**WELL :** BEEZLEY 5X22  
**RIG :** H&P 316  
**LOCATION :** RANGELY  
**COMPANY MAN :** BRENT SWANK  
ELMER TATUM

**PREPARED BY :** JEFF PATTERSON  
**TITLE :** FS1  
**CELL # :** 1-970-270-6976  
**DISTRICT :** GJCO  
**SALES CONTACT :** Kent Donner  
**PHONE # :** 1-970-683-4000

<b>Well</b>	BEEZLEY 5X22	<b>Client</b>	CHEVRON	<div>RECEIVED</div> <div>APR 28 2011</div> <div>COGCC</div> <div>Messages</div>
<b>Field</b>	RANGELY	<b>SIR No.</b>	BAD4-00194	
<b>Engineer</b>	JEFF PATTERSON	<b>Job Type</b>	9 5/8" SURFACE	
<b>Country</b>	United States	<b>Job Date</b>	09-29-2010	



RECEIVED

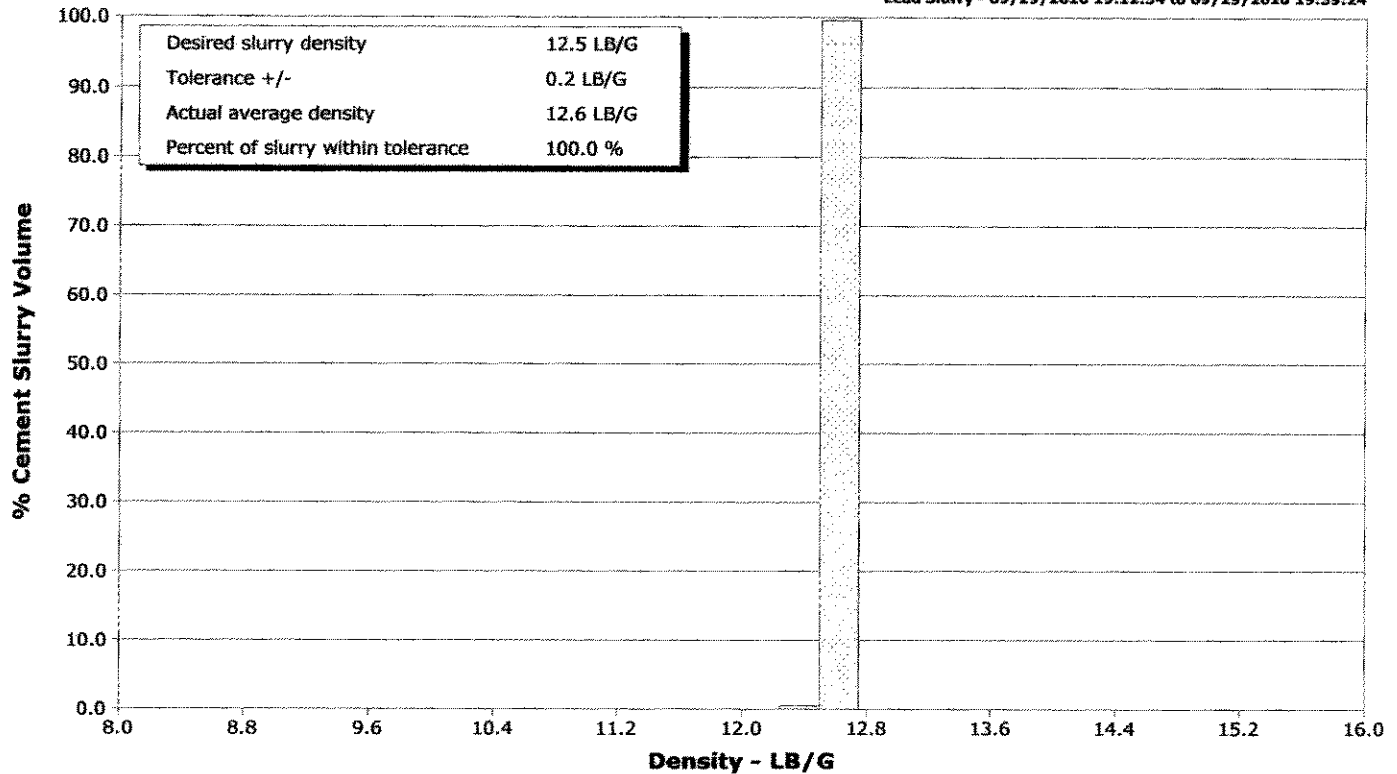
APR 28 2011

COGCC

**Well** BEEZLEY 5X22  
**Field** RANGELY  
**Engineer** JEFF PATTERSON  
**Country** United States

**Client** CHEVRON  
**SIR No.** BAD4-00194  
**Job Type** 9 5/8" SURFACE  
**Job Date** 09-29-2010

Lead Slurry - 09/29/2010 19:12:34 to 09/29/2010 19:39:24



Tail Slurry - 09/29/2010 19:40:38 to 09/29/2010 19:51:41

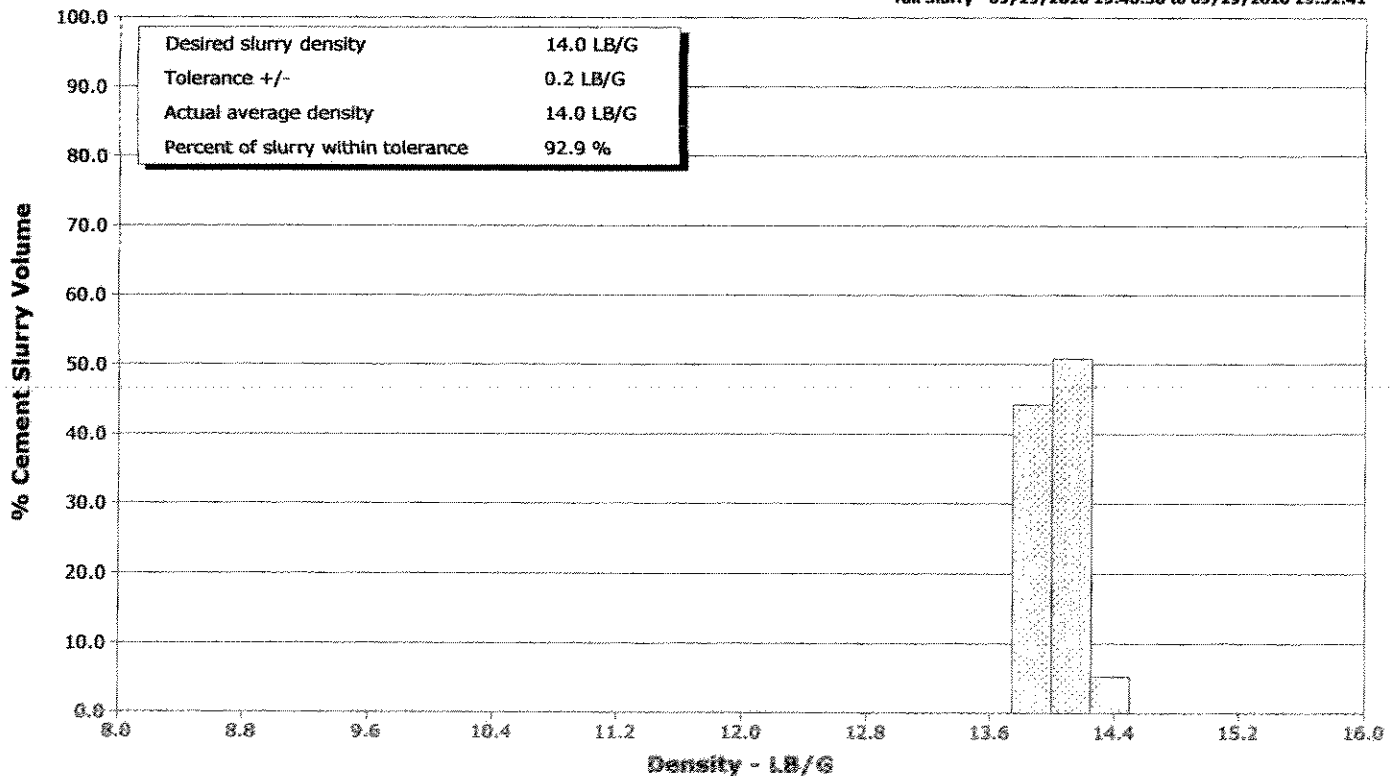




Figure 2

Well BEEZLEY 5X22 BEEZLEY 5X22			Field	Job Start	Customer	Job Number
			RANGELY	Sep/29/2010	CHEVRON	BAD4-00194
Date	Time 24-hr clock	Treating Pressure PSI	Flow Rate B/M	Density LB/G	Volume BBL	Message
09/29/2010	18:54:39	-3	0.2	8.41	0.3	
09/29/2010	18:55:09	-3	0.2	8.46	0.4	
09/29/2010	18:55:39	-3	0.2	8.46	0.5	
09/29/2010	18:56:09	-3	0.2	8.46	0.6	
09/29/2010	18:56:39	-3	0.0	8.48	0.6	
09/29/2010	18:57:09	-3	0.0	8.47	0.6	
09/29/2010	18:57:39	35	2.1	8.31	1.3	
09/29/2010	18:58:09	14	2.0	8.33	2.3	
09/29/2010	18:58:39	14	0.0	8.34	2.4	
09/29/2010	18:59:09	1121	0.0	8.34	2.4	
09/29/2010	18:59:39	1109	0.0	8.34	2.4	
09/29/2010	19:00:09	3498	0.0	8.34	2.4	
09/29/2010	19:00:39	3479	0.0	8.34	2.4	
09/29/2010	19:01:09	3283	0.0	8.34	2.4	
09/29/2010	19:01:39	2	0.3	8.34	2.5	
09/29/2010	19:02:09	4	0.0	8.34	2.5	
09/29/2010	19:02:39	5	0.0	8.34	2.5	
09/29/2010	19:03:09	15	1.5	8.50	3.2	
09/29/2010	19:03:39	48	2.5	8.43	3.8	
09/29/2010	19:04:09	53	2.5	8.42	5.0	
09/29/2010	19:04:39	78	3.2	8.41	6.9	
09/29/2010	19:05:09	77	3.6	8.42	8.6	
09/29/2010	19:05:39	75	3.5	8.42	10.4	
09/29/2010	19:06:09	89	3.5	8.42	12.1	
09/29/2010	19:06:39	86	3.5	8.40	13.9	
09/29/2010	19:07:09	126	4.4	8.46	15.8	
09/29/2010	19:07:39	155	5.1	8.44	18.3	
09/29/2010	19:08:09	145	5.0	8.45	20.8	
09/29/2010	19:08:39	151	5.0	8.44	23.4	
09/29/2010	19:09:09	158	5.0	8.43	25.9	
09/29/2010	19:09:39	120	5.0	11.45	28.4	
09/29/2010	19:10:09	195	5.0	12.02	30.9	
09/29/2010	19:10:39	209	5.0	12.23	33.5	
09/29/2010	19:10:44					End Spacer
09/29/2010	19:10:44	200	5.1	12.24	33.9	
09/29/2010	19:10:45					Start Cement Slurry
09/29/2010	19:10:45					Start Mixing Scav Slurry
09/29/2010	19:10:45	192	5.1	12.25	34.0	
09/29/2010	19:10:48					Mixing and pumping 12.5ppg lead slurry.
09/29/2010	19:10:48	195	5.1	12.27	34.2	
09/29/2010	19:10:49					Good returns.
09/29/2010	19:10:49	193	5.1	12.27	34.3	
09/29/2010	19:11:09	235	5.0	12.40	36.0	
09/29/2010	19:11:39	197	5.1	12.45	38.5	
09/29/2010	19:12:09	190	5.0	12.51	41.1	
09/29/2010	19:12:34					End Scavenger Slurry
09/29/2010	19:12:34					Start Mixing Lead Slurry
09/29/2010	19:12:34	182	5.1	12.54	43.2	
09/29/2010	19:12:39	194	5.1	12.55	43.6	
09/29/2010	19:13:09	171	5.1	12.61	46.1	
09/29/2010	19:13:39	180	5.1	12.61	48.7	
09/29/2010	19:14:09	178	5.1	12.61	51.2	
09/29/2010	19:14:39	176	5.1	12.60	53.7	
09/29/2010	19:15:09	182	5.1	12.61	56.3	

Well BEEZLEY 5X22 BEEZLEY 5X22			Field	RANGELY		Job Start Sep/29/2010	Customer CHEVRON	Job Number BAD4-00194
Date	Time 24-hr clock	Treating Pressure PSI	Flow Rate B/M	Density LB/G	Volume BBL	Message		
09/29/2010	19:16:09	172	5.1	12.63	61.4			
09/29/2010	19:16:39	173	5.1	12.66	63.9			
09/29/2010	19:17:09	168	5.1	12.58	66.4			
09/29/2010	19:17:39	181	5.1	12.58	69.0			
09/29/2010	19:18:09	178	5.1	12.63	71.5			
09/29/2010	19:18:39	183	5.1	12.63	74.1			
09/29/2010	19:19:09	172	5.1	12.60	76.6			
09/29/2010	19:19:39	185	5.1	12.62	79.2			
09/29/2010	19:20:09	174	5.1	12.62	81.7			
09/29/2010	19:20:39	184	5.1	12.61	84.2			
09/29/2010	19:21:09	155	5.1	12.60	86.8			
09/29/2010	19:21:39	183	5.1	12.58	89.3			
09/29/2010	19:22:09	173	5.1	12.57	91.9			
09/29/2010	19:22:39	181	5.1	12.62	94.4			
09/29/2010	19:23:09	180	5.1	12.62	96.9			
09/29/2010	19:23:39	179	5.1	12.62	99.5			
09/29/2010	19:24:09	176	5.1	12.62	102.0			
09/29/2010	19:24:39	186	5.1	12.62	104.6			
09/29/2010	19:25:09	174	5.1	12.62	107.1			
09/29/2010	19:25:39	193	5.1	12.62	109.6			
09/29/2010	19:26:09	167	5.1	12.63	112.2			
09/29/2010	19:26:39	189	5.1	12.62	114.7			
09/29/2010	19:27:09	182	5.1	12.62	117.3			
09/29/2010	19:27:39	182	5.1	12.62	119.8			
09/29/2010	19:28:09	179	5.1	12.61	122.3			
09/29/2010	19:28:39	190	5.1	12.61	124.9			
09/29/2010	19:29:09	171	5.1	12.59	127.4			
09/29/2010	19:29:39	188	5.1	12.59	130.0			
09/29/2010	19:30:09	177	5.1	12.60	132.5			
09/29/2010	19:30:39	185	5.1	12.60	135.0			
09/29/2010	19:31:09	177	5.1	12.58	137.6			
09/29/2010	19:31:39	176	5.1	12.59	140.1			
09/29/2010	19:32:09	169	5.1	12.58	142.7			
09/29/2010	19:32:39	175	5.1	12.59	145.2			
09/29/2010	19:33:09	184	5.1	12.59	147.7			
09/29/2010	19:33:39	168	5.1	12.58	150.3			
09/29/2010	19:34:09	178	5.1	12.59	152.8			
09/29/2010	19:34:39	176	5.1	12.58	155.3			
09/29/2010	19:35:09	180	5.1	12.58	157.9			
09/29/2010	19:35:39	175	5.1	12.58	160.4			
09/29/2010	19:36:09	187	5.1	12.59	163.0			
09/29/2010	19:36:39	185	5.1	12.58	165.5			
09/29/2010	19:37:09	179	5.1	12.56	168.0			
09/29/2010	19:37:39	171	5.1	12.57	170.6			
09/29/2010	19:38:09	173	5.1	12.57	173.1			
09/29/2010	19:38:39	186	5.1	12.55	175.7			
09/29/2010	19:39:09	171	5.1	12.52	178.2			
09/29/2010	19:39:24					End Lead Slurry		
09/29/2010	19:39:24	169	5.1	12.59	179.5			
09/29/2010	19:39:26					Pumped 164bbls of 12.5ppg lead slurry.		
09/29/2010	19:39:26					Good returns.		
09/29/2010	19:39:26	183	5.1	12.57	179.6			
09/29/2010	19:39:39	190	5.1	12.64	180.7			
09/29/2010	19:40:09	212	5.1	13.70	183.3			

Well BEEZLEY 5X22 BEEZLEY 5X22			Field RANGELY		Job Start Sep/29/2010		Customer CHEVRON		Job Number BAD4-00194	
Date	Time 24-hr clock	Treating Pressure PSI		Flow Rate B/M	Density LB/G		Volume BBL		Message	
09/29/2010	19:40:38		206	5.1	14.04		185.7			
09/29/2010	19:40:39		227	5.1	14.05		185.8			
09/29/2010	19:40:41								Mixing and pumping 14.0ppg tail slurry.	
09/29/2010	19:40:41								Good returns.	
09/29/2010	19:40:41		218	5.1	14.06		186.0			
09/29/2010	19:41:09		211	5.1	14.09		188.4			
09/29/2010	19:41:39		227	5.1	14.18		190.9			
09/29/2010	19:42:09		223	5.0	14.27		193.4			
09/29/2010	19:42:39		224	5.1	13.94		196.0			
09/29/2010	19:43:09		192	5.1	13.92		198.5			
09/29/2010	19:43:39		218	5.1	13.91		201.0			
09/29/2010	19:44:09		216	5.0	13.90		203.6			
09/29/2010	19:44:39		201	5.1	13.96		206.1			
09/29/2010	19:45:09		205	5.1	13.81		208.6			
09/29/2010	19:45:39		218	5.1	14.16		211.2			
09/29/2010	19:46:09		218	5.1	13.95		213.7			
09/29/2010	19:46:39		207	5.0	14.02		216.2			
09/29/2010	19:47:09		211	5.1	14.03		218.8			
09/29/2010	19:47:39		203	5.0	14.04		221.3			
09/29/2010	19:48:09		228	5.1	14.07		223.8			
09/29/2010	19:48:39		212	5.1	14.05		226.3			
09/29/2010	19:49:09		223	5.0	14.07		228.9			
09/29/2010	19:49:39		209	5.1	14.05		231.4			
09/29/2010	19:50:09		233	5.1	14.06		233.9			
09/29/2010	19:50:39		205	5.1	14.06		236.5			
09/29/2010	19:51:09		221	5.1	13.94		239.0			
09/29/2010	19:51:39		223	5.0	14.00		241.5			
09/29/2010	19:51:41								End Tail Slurry	
09/29/2010	19:51:41		205	5.1	14.00		241.7			
09/29/2010	19:51:42								End Cement Slurry	
09/29/2010	19:51:42		206	5.1	14.01		241.8			
09/29/2010	19:51:43								Pumped 68bbls of 14.0ppg tail slurry.	
09/29/2010	19:51:43		223	5.1	14.01		241.9			
09/29/2010	19:51:44								Good returns.	
09/29/2010	19:51:44		222	5.1	14.01		242.0			
09/29/2010	19:51:47								Drop Top Plug	
09/29/2010	19:51:47								Start Displacement	
09/29/2010	19:51:47		215	5.1	14.02		242.2			
09/29/2010	19:52:09		218	5.1	13.80		244.1			
09/29/2010	19:52:39		3	0.2	14.01		246.2			
09/29/2010	19:53:09		5	0.0	14.02		246.2			
09/29/2010	19:53:39		5	0.0	13.99		246.2			
09/29/2010	19:54:09		7	0.0	13.98		246.2			
09/29/2010	19:54:39		6	0.0	13.98		246.2			
09/29/2010	19:55:09		6	0.0	13.90		246.2			
09/29/2010	19:55:39		6	0.0	13.90		246.2			
09/29/2010	19:56:09		8	0.0	13.93		246.2			
09/29/2010	19:56:39		49	2.1	9.39		247.0			
09/29/2010	19:57:09		45	2.9	8.92		248.2			
09/29/2010	19:57:39		71	3.6	8.89		249.9			
09/29/2010	19:58:09		108	5.1	8.74		252.1			
09/29/2010	19:58:39		102	5.1	8.69		254.6			
09/29/2010	19:59:09		101	5.1	8.69		257.2			
09/29/2010	19:59:39		110	5.0	8.67		259.7			

Well BEEZLEY 5X22 BEEZLEY 5X22			Field RANGELY	Job Start Sep/29/2010	Customer CHEVRON	Job Number BAD4-00194
Date	Time 24-hr clock	Treating Pressure PSI	Flow Rate B/M	Density LB/G	Volume BBL	Message
09/29/2010	20:00:39	101	5.1	8.49	264.8	
09/29/2010	20:01:09	104	5.1	8.48	267.3	
09/29/2010	20:01:39	99	5.1	8.42	269.9	
09/29/2010	20:02:09	101	5.1	8.39	272.4	
09/29/2010	20:02:39	109	5.1	8.37	275.0	
09/29/2010	20:03:09	98	5.1	8.35	277.5	
09/29/2010	20:03:39	97	5.1	8.37	280.0	
09/29/2010	20:04:09	98	5.1	8.35	282.6	
09/29/2010	20:04:39	102	5.1	8.35	285.1	
09/29/2010	20:05:09	108	5.1	8.34	287.7	
09/29/2010	20:05:39	98	5.1	8.27	290.2	
09/29/2010	20:06:09	115	5.1	8.29	292.8	
09/29/2010	20:06:39	120	5.1	8.29	295.3	
09/29/2010	20:07:09	141	5.1	8.32	297.8	
09/29/2010	20:07:39	151	5.1	8.32	300.4	
09/29/2010	20:08:09	154	5.0	8.25	302.9	
09/29/2010	20:08:39	173	5.0	8.32	305.4	
09/29/2010	20:09:09	185	5.0	8.33	307.9	
09/29/2010	20:09:39	213	5.0	8.34	310.4	
09/29/2010	20:10:09	215	5.0	8.25	313.0	
09/29/2010	20:10:39	224	5.0	8.33	315.5	
09/29/2010	20:11:09	247	5.0	8.33	318.0	
09/29/2010	20:11:39	246	5.0	8.30	320.5	
09/29/2010	20:12:09	287	5.0	8.31	323.0	
09/29/2010	20:12:39	163	3.1	8.32	325.4	
09/29/2010	20:13:09	172	2.0	8.33	326.5	
09/29/2010	20:13:39	179	2.0	8.33	327.5	
09/29/2010	20:14:09	198	2.0	8.33	328.5	
09/29/2010	20:14:39	246	2.0	8.33	329.5	
09/29/2010	20:15:09	215	2.0	8.33	330.5	
09/29/2010	20:15:39	226	1.7	8.34	331.4	
09/29/2010	20:16:09	191	1.7	8.34	332.2	
09/29/2010	20:16:39	241	2.0	8.34	333.2	
09/29/2010	20:17:09	222	2.0	8.33	334.2	
09/29/2010	20:17:39	213	2.0	8.33	335.2	
09/29/2010	20:18:09	242	2.0	8.27	336.2	
09/29/2010	20:18:39	281	3.1	8.32	337.3	
09/29/2010	20:19:09	387	5.0	8.33	339.4	
09/29/2010	20:19:33					Displace with fresh water.
09/29/2010	20:19:33					Good returns.
09/29/2010	20:19:33	353	4.9	8.28	341.4	
09/29/2010	20:19:35					Cement to surface at 82bbbls away of displacement.
09/29/2010	20:19:35					Good returns.
09/29/2010	20:19:35	377	5.0	8.28	341.5	
09/29/2010	20:19:39	368	5.0	8.29	341.9	
09/29/2010	20:20:09	365	4.9	8.32	344.4	
09/29/2010	20:20:39	415	4.9	8.33	346.8	
09/29/2010	20:21:08					Total cement to surface is 71bbbls.
09/29/2010	20:21:08	407	4.9	8.33	349.2	
09/29/2010	20:21:09	416	4.9	8.33	349.3	
09/29/2010	20:21:39	430	4.9	8.33	351.7	
09/29/2010	20:21:49					Good cement returns.
09/29/2010	20:21:49	428	4.9	8.33	352.6	
09/29/2010	20:22:09	464	5.0	8.31	354.2	



Well			Field	Job Start		Customer	Job Number
BEEZLEY 5X22 BEEZLEY 5X22			RANGELY	Sep/29/2010		CHEVRON	BAD4-00194
Date	Time 24-hr clock	Treating Pressure PSI	Flow Rate B/M	Density LB/G	Volume BBL	Message	
09/29/2010	20:23:09	472	4.9	8.32	359.1		
09/29/2010	20:23:39	518	4.9	8.32	361.6		
09/29/2010	20:24:09	468	4.9	8.32	364.1		
09/29/2010	20:24:39	506	5.0	8.32	366.6		
09/29/2010	20:25:09	558	4.9	8.32	369.0		
09/29/2010	20:25:39	520	4.9	8.32	371.5		
09/29/2010	20:26:09	588	5.0	8.26	374.0		
09/29/2010	20:26:39	572	5.0	8.30	376.5		
09/29/2010	20:27:09	554	5.0	8.31	378.9		
09/29/2010	20:27:39	616	4.9	8.32	381.4		
09/29/2010	20:28:09	617	4.9	8.32	383.9		
09/29/2010	20:28:39	556	4.4	8.32	386.1		
09/29/2010	20:29:09	552	4.3	8.32	388.3		
09/29/2010	20:29:39	554	4.3	8.32	390.5		
09/29/2010	20:30:09	644	4.4	8.32	392.7		
09/29/2010	20:30:39	475	2.0	8.32	394.6		
09/29/2010	20:31:09	614	2.0	8.31	395.6		
09/29/2010	20:31:39	496	2.0	8.32	396.5		
09/29/2010	20:32:09	489	2.0	8.32	397.5		
09/29/2010	20:32:39	630	2.0	8.31	398.5		
09/29/2010	20:33:09	635	2.0	8.32	399.5		
09/29/2010	20:33:39	623	2.0	8.32	400.5		
09/29/2010	20:34:09	599	2.0	8.32	401.5		
09/29/2010	20:34:39	1225	0.0	8.32	402.2		
09/29/2010	20:35:09	1217	0.0	8.32	402.2		
09/29/2010	20:35:39	1219	0.0	8.32	402.2		
09/29/2010	20:35:51					Bump Top Plug	
09/29/2010	20:35:51	1218	0.0	8.32	402.2		
09/29/2010	20:35:52					End Displacement	
09/29/2010	20:35:52	1218	0.0	8.32	402.2		
09/29/2010	20:35:54					Bumped plug to 1200psi.	
09/29/2010	20:35:54					Final displacement was 151bbbls.	
09/29/2010	20:35:54					Good strong cement returns.	
09/29/2010	20:35:54					Hold for 15minutes.	
09/29/2010	20:35:54	1218	0.0	8.32	402.2		
09/29/2010	20:35:55					Bleed off pressure.	
09/29/2010	20:35:55					Check floats.	
09/29/2010	20:35:55					Floats held.	
09/29/2010	20:35:55					Got 1bbl back.	
09/29/2010	20:35:55	1219	0.0	8.32	402.2		
09/29/2010	20:35:56					Good returns for entire job.	
09/29/2010	20:35:56					Total cement to surface was 71bbbls.	
09/29/2010	20:35:56	1219	0.0	8.32	402.2		
09/29/2010	20:36:09	1219	0.0	8.32	402.2		
09/29/2010	20:36:39	1220	0.0	8.32	402.2		
09/29/2010	20:37:09	1220	0.0	8.32	402.2		
09/29/2010	20:37:39	1219	0.0	8.32	402.2		
09/29/2010	20:38:09	1220	0.0	8.32	402.2		
09/29/2010	20:38:39	1221	0.0	8.32	402.2		
09/29/2010	20:39:09	1221	0.0	8.32	402.2		
09/29/2010	20:39:39	1221	0.0	8.32	402.2		
09/29/2010	20:40:09	1222	0.0	8.32	402.2		
09/29/2010	20:40:39	1221	0.0	8.32	402.2		
09/29/2010	20:41:09	1222	0.0	8.32	402.2		

Well			Field	Job Start		Customer	Job Number
BEEZLEY 5X22 BEEZLEY 5X22			RANGELY	Sep/29/2010		CHEVRON	BAD4-00194
Date	Time 24-hr clock	Treating Pressure PSI	Flow Rate B/M	Density LB/G	Volume BBL	Message	
09/29/2010	20:42:09	1223	0.0	8.32	402.2		
09/29/2010	20:42:39	1223	0.0	8.32	402.2		
09/29/2010	20:43:09	1223	0.0	8.32	402.2		
09/29/2010	20:43:39	1223	0.0	8.32	402.2		
09/29/2010	20:44:09	1223	0.0	8.32	402.2		
09/29/2010	20:44:39	1223	0.0	8.32	402.2		
09/29/2010	20:45:09	1223	0.0	8.32	402.2		
09/29/2010	20:45:39	1223	0.0	8.32	402.2		
09/29/2010	20:46:09	1223	0.0	8.32	402.2		
09/29/2010	20:46:39	1223	0.0	8.32	402.2		
09/29/2010	20:47:09	1223	0.0	8.32	402.2		
09/29/2010	20:47:39	1223	0.0	8.32	402.2		
09/29/2010	20:48:09	1223	0.0	8.32	402.2		
09/29/2010	20:48:39	1223	0.0	8.32	402.2		
09/29/2010	20:49:09	1222	0.0	8.32	402.2		
09/29/2010	20:49:39	1222	0.0	8.32	402.2		
09/29/2010	20:50:09	1223	0.0	8.32	402.2		
09/29/2010	20:50:39	813	0.0	8.32	402.2		
09/29/2010	20:51:09	3	0.0	8.32	402.2		
09/29/2010	20:51:39	4	0.0	8.32	402.2		
09/29/2010	20:52:09	5	0.0	8.32	402.2		
09/29/2010	20:52:31					End Job	
09/29/2010	20:52:31	5	0.0	8.32	402.2		

### Post Job Summary

Average Pump Rates, bbl/min				Volume of Fluid Injected, bbl			
Slurry 7.0	N2	Mud	Maximum Rate 7.0	Total Slurry 227.0	Mud	Spacer 20.0	N2
Treating Pressure Summary, psi				Breakdown Fluid			
Maximum 3000	Final 1200	Average 200	Bump Plug to 1200	Breakdown	Type	Volume	Density
Avg. N2 Percent	Designed Slurry Volume 227.0 bbl	Displacement 151.0 bbl	Mix Water Temp 60 degF	Cement Circulated to Surface? <input checked="" type="checkbox"/>	Washed Thru Peris <input type="checkbox"/>	Circulation Lost <input type="checkbox"/>	Volume 71.0 bbl To Job Completed <input checked="" type="checkbox"/>
Customer or Authorized Representative BRENT SWANK		Schlumberger Supervisor JEFF PATTERSON					