

SURFACE HOLE:

1,226' FSL, 2,286' FWL

SECTION 4,

T-9-S, R-104-W, 6TH P.M.,

MESA COUNTY

COLORADO

LAT. 39.30012° N

LONG. 109.00561° W NAD83

ELEVATION AT STAKE

5,079 NAVD88

NOTES:

1. SURFACE USE IS P+A WELL LOCATION AND GRAZING.

2. SEE ATTACHED ADDENDUM FOR IMPROVEMENTS, AND PROPERTY LINES WITHIN 400' OF PROPOSED WELL.

3. DATE OF SURVEY 4 May 2010.

4. BASIS OF ELEVATION = NAVD88 AS PREDICTED BY GEOID09.

5. PDOP OF GPS OBSERVATION OF WELL STAKE = 2.0

6. FOOTAGE DIMENSION FIELD MEASURED AT 90° FROM SECTION LINES

7. (R-1) = Record Survey G.L.O. Plat approved APRIL 26, 1918.

8. (M) = FIELD MEASURED.

9. BASIS OF BEARING As Measured By GPS between found monuments at the Southwest Corner and the West Quarter Corner of Section 4, T-9-S, R-104-W, 6TH P.M., Mesa County, Colorado, Line Bears: N 0°06'12" W, a distance of 2,638.5 feet.

Legend

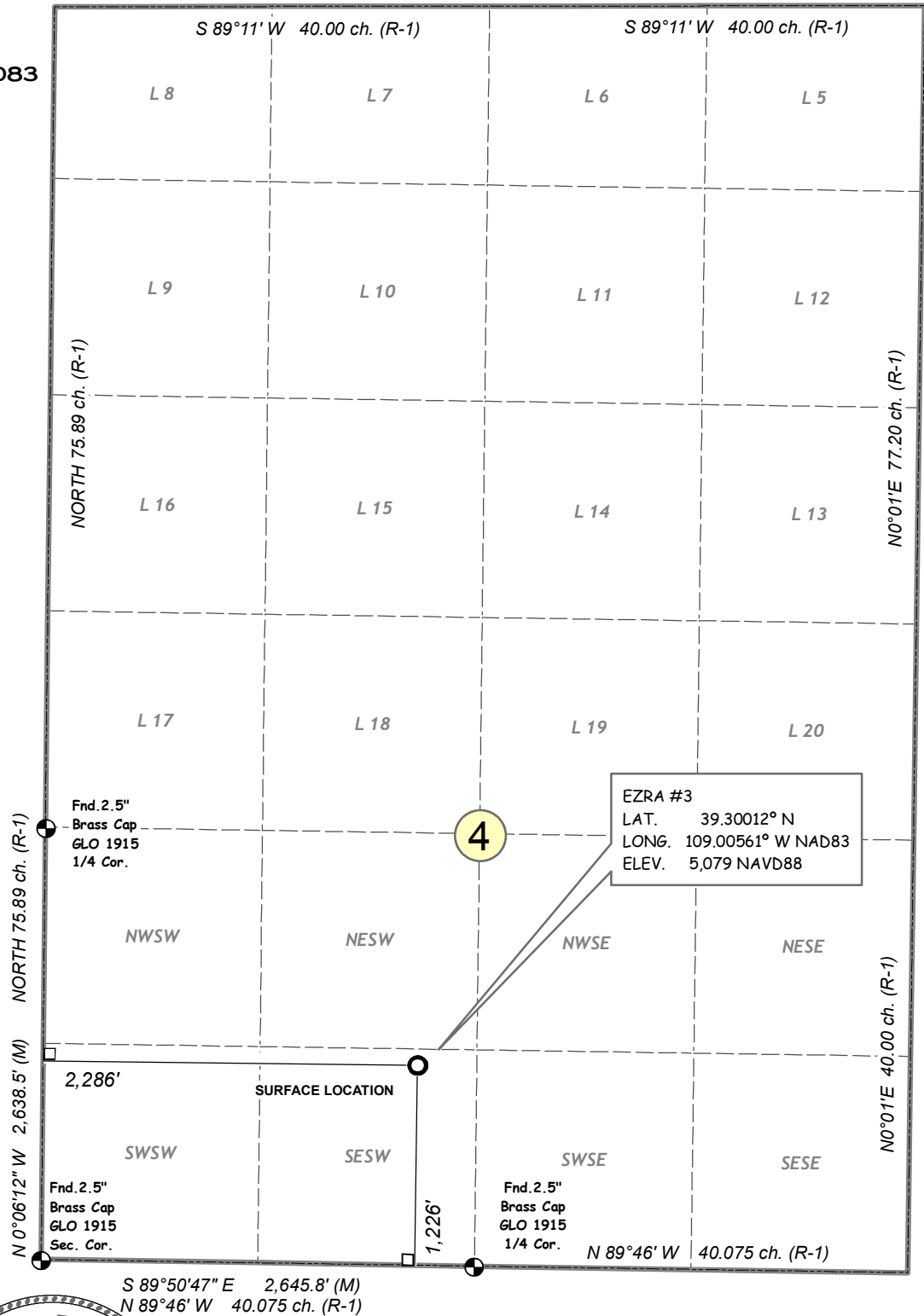
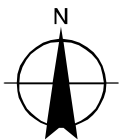
⊕ FOUND CONTROL MONUMENT

○ STAKED WELL LOCATION

□ 90° TIE DIMENSION

0 500 1,000
Feet

1 inch equals 1,000 feet



THIS IS TO CERTIFY THAT THE ABOVE PLAT WAS PREPARED FROM FIELD NOTES OF ACTUAL SURVEYS MADE BY ME OR UNDER MY DIRECT SUPERVISION AND THAT SAME ARE TRUE AND CORRECT TO THE BEST OF MY KNOWLEDGE AND BELIEF

DAVID ALEXANDER JOHNSON LICENSE NO. 33648 DATE 5-25-10 STATE OF COLORADO

SEVOO2SD.MXD 2010/05/25

JMAS
JOHNSON MAPPING
AND SURVEYING, LLC
PO BOX 2174
FARMINGTON NM 87499-2174
505-360-8029
ALEX@JOHNSONMAPPING.BIZ