

EXXONMOBIL CORPORATION

HOUSTON, Texas

PCU 296-6A1

H&P 239

Post Job Summary

Cement Intermediate Casing

Prepared for: George McNary
Date Prepared: 11/10/2010
Version: 1

Service Supervisor: DEARING, KEN

Submitted by: Mthokozisi C Dube

HALLIBURTON

Wellbore Geometry

Job Tubulars					MD		TVD		Excess	Shoe Joint Length
Type	Description	Size in	ID in	Wt lbm/ft	Top ft	Bottom ft	Top ft	Bottom ft	%	ft
Casing	Surface Casing	10.75	9.950	45.50	0.00	4,593.00	0.00	4,464.00		80.00
Open Hole Section	Intermediate Open Hole		9.875		4,593.00	9,667.00	4,464.00	9,523.00	100.00	
Casing	Intermediate Casing	7.00	6.276	26.00	0.00	9,654.00	0.00	9,510.00		98.76

Pumping Schedule

Stage /Plug #	Fluid #	Fluid Type	Fluid Name	Surface Density lbm/gal	Avg Rate bbl/min	Surface Volume	Downhole Volume
1	1	Spacer	TUNED SPACER III	10.00	6.00	80.0 bbl	80.0 bbl
1	2	Cement Slurry	New Vernal Tuned Light	11.00	6.00	1305.0 sacks	1305.0 sacks
1	3	Mud	Drilling Fluid/ Mud	9.10	6.00	361.0 bbl	361.0 bbl

HALLIBURTON

Fluids Pumped

Stage/Plug # 1 Fluid 1: TUNED SPACER III
TUNED SPACER III - SBM (483826)
3 lbm/bbl Fe-2
59.8 lbm/bbl Barite

Fluid Density: 10.00 lbm/gal
Fluid Volume: 80.00 bbl
Pump Rate: 6.00 bbl/min

Stage/Plug # 1 Fluid 2: New Vernal Tuned
Light
TUNED LIGHT (TM) SYSTEM
0.7 lbm HR-601

Fluid Weight: 11.00 lbm/gal
Slurry Yield: 2.25 ft³/sack
Total Mixing Fluid: 10.02 Gal
Surface Volume: 1305.0 sacks
Sacks: 1305.0 sacks
Calculated Fill: 5,500.00 ft
Calculated Top of Fluid: 4,093.00 ft
Estimated Top of Fluid:
Pump Rate: 6.00 bbl/min

Stage/Plug # 1 Fluid 3: Drilling Fluid/ Mud

Fluid Density: 9.10 lbm/gal
Fluid Volume: 361.00 bbl
Pump Rate: 6.00 bbl/min
Fluid Gels:
Mud PV/YP:

Job Summary

Job Information

Job Start Date	11/7/2010 8:00:00 PM
Job MD	9,593.0 ft
Height of Plug Container/Swage Above Rig Floor	4.0 ft
Surface Temperature at Time of Job	40 degF
Mud Type	Water Based Mud
Name of Mud Company	BAROID
Actual Mud Density	9 lbm/gal
Time Circulated before job	3.00 hour(s)
Mud Volume Circulated	720.00 bbl
Rate at Which Well was Circulated	4.000 bbl/min
Units of Gas Detected While Circulating	1000 API Gas Units
Pipe Movement During Hole Circulation	Reciprocated
Time From End Mud Circ. to Job Start	20.00 minute
Pipe Movement During Cementing	Reciprocated
Calculated Displacement	365.20 bbl
Job Displaced by (rig/halco)	Cement Unit HP Pumps
Annular flow Before Job? (Water/Gas)	No
Annular flow After Job? (Water/Gas)	No
Length of Rat Hole	13.00 ft

Cementing Equipment

Number of Centralizers Used	8
Pipe Centralization	Through Production Intervals
Brand of Float Equipment Used	Weatherford GEMOCO
Did Float Equipment Hold?	Yes
Plug set used?	Yes
Brand of Plug set used?	Weatherford GEMOCO
Did Plugs Bump?	Yes
Calculated Pressure to Bump Plugs	530.0 psig
Did Stage Cementing Tool Open Properly?	Unknown

Service Supervisor Reports

Job Log

Date/Time	Chart #	Activity Code	Pump Rate	Cum Vol	Pump		Pressure (psig)		Comments
11/07/2010 07:00		Call Out							
11/07/2010 08:00		Pre-Convoy Safety Meeting							DISCUSS SAFETY AND HAZARDS OF TRAVEL.
11/07/2010 08:15		Other							LOAD EQUIPMENT FOR JOB AND CHECK OUT BULK TRUCK LOADS.
11/07/2010 09:15		Depart Yard Safety Meeting							DISCUSS SAFETY AND HAZARDS OF TRAVEL.
11/07/2010 09:30		Crew Leave Yard							
11/07/2010 13:30		Arrive At Loc							
11/07/2010 13:35		Assessment Of Location Safety Meeting							SIGN IN AT SAFETY SHACK, GET WORK PERMIT SIGNED, WALK LOCATION, DISCUSS SPOTTING OF EQUIPMENT AND RIGGING UP, DISCUSS SAFETY AND HAZARDS.

HALLIBURTON

Date/Time	Chart #	Activity Code	Pump Rate	Cum Vol	Pump		Pressure (psig)		Comments
11/07/2010 13:45		Safety Meeting							MEET WITH CO.MAN, GET WELL INFORMATION, DISCUSS WELL CONDITIONS, DISCUSS VPRESSURE TEST AND MAX PRESSURE, DISCUSS SAFETY AND HAZARDS.
11/07/2010 13:55		Safety Huddle							DISCUSS SAFETY VAND HAZARDS.
11/07/2010 14:00		Other							SPOT EQUIPMENT.
11/07/2010 14:10		Safety Meeting - Pre Rig-Up							DISCUSS SAFETY VAND HAZARDS.
11/07/2010 14:15		Rig-Up Equipment							RIG UP IRON AND SUCTION HOSE, TEST H2O.
11/07/2010 16:30		Casing on Bottom							
11/07/2010 16:35		Circulate Well							RIG STARTS TO CIRCULATE WELL.
11/07/2010 16:40		Prime Pumps							GET ALL EQUIPMENT READY FOR JOB.
11/07/2010 16:45		Safety Meeting							MEET WITH CO.MAN, GO OVER CALCULATIONS, DISCUSS JOB PROCEDURE, DISCUSS CONTINGENCIES, DISCUSS SAFETY AND HAZARDS.
11/07/2010 17:00		Pressure Test						5000.0	PRE-JOB PRESSURE TEST.

HALLIBURTON

Date/Time	Chart #	Activity Code	Pump Rate	Cum Vol	Pump		Pressure (psig)		Comments
11/07/2010 17:00		Safety Meeting - Pre Rig-Up							DISCUSS SAFETY AND HAZARDS.
11/07/2010 17:05		Rig-Up Equipment							RIG UP IRON TO RIG FLOOR AND RIG UP IRON ON RIG FLOOR.
11/07/2010 17:45		Safety Meeting							SAFETY MEETING WITH RIG CREW AND CASING CREW, AND CO.MAN, DISCUSS RIGGING DOWN CASERS AND CRT, AND RIGGING UP CEMENT HEAD.
11/07/2010 18:00		Other							LOAD PLUG INTO CEMENT HEAD WITH CO.MAN, WAIT WHILE CASERS RIG DOWN AND RIG RIGS DOWN CRT.
11/07/2010 18:15		Safety Meeting - Pre Rig-Up							DISCUSS SAFETY AND HAZARDS.
11/07/2010 18:20		Rig-Up Equipment							RIG UP CEMENT HEAD TO CASING.
11/07/2010 18:30		Circulate Well							RIG CIRCULATE THROUGH HES CEMENT HEAD.
11/07/2010 18:30		Other							WAIT WHILE CASING CREW RIGS DOWN AND RIG RIGS UP ELEVATORS AND BALES.
11/07/2010 19:15		Safety Meeting - Pre Job							SAFETY MEETING WITH RIG CREW AND CO.MAN, DISCUSS JOB PROCEDURES, DISCUSS SAFETY AND HAZARDS.

HALLIBURTON

Date/Time	Chart #	Activity Code	Pump Rate	Cum Vol	Pump		Pressure (psig)		Comments
11/07/2010 19:40		Other							RECHECK EQUIPMENT AND HAVE RIG SEND SOME MUD TO RCM TO CHECK OUT MUD DELIVERY.
11/07/2010 19:50		Safety Meeting - Pre Rig-Up							DISCUSS SAFETY AND HAZARDS.
11/07/2010 19:55		Rig-Up Equipment							RIG SHUTS DOWN, RIG UP IRON TO CEMENT HEAD.
11/07/2010 20:11		Pump Water	4						PUMP 5 BBL OF WATER TO FILL LINES AND PRESSURE TEST.
11/07/2010 20:13		Pressure Test						410.0	START LOW PRESSURE TEST AT 410 PSI AND END AT 374 PSI. LOST 36 PSI IN 3 MINUTES
11/07/2010 20:16		Pressure Test						5053.0	START HIGH PRESSURE TEST AT 5053 PSI AND END AT 4939 PSI. LOST 114 PSI IN 3 MINUTES

HALLIBURTON

Date/Time	Chart #	Activity Code	Pump Rate	Cum Vol	Pump		Pressure (psig)		Comments
11/07/2010 20:20		Pump Spacer	4	80				335.0	RECORDED 74 BBL OF 10 PPG, 4.882 CF/SK, 33.207 GAL/SK TUNED SPACER III. DESIGN VOLUME WAS 80 BBL. SPACER VOLUMES RECORDED FROM BELLY MAGMETER. RECORDED 69 BBL OF SPACER MIX WATER. DESIGN VOLUME WAS 73 BBL.
11/07/2010 20:28		Other	4					330.0	WELL CIRCULATING.
11/07/2010 20:40		Shutdown							END SPACER-SHUT DOWN.
11/07/2010 20:41		Drop Plug	0	0				37.0	DROP BOTTOM PLUG, START MIXING CEMENT.
11/07/2010 20:44		Pump Cement	5	514				540.0	RECORDED 530 BBL OF 11 PPG, 2.21 CF/SK, 9.67 GAL/SK TUNED LIGHT. DESIGN VOLUME WAS 513.67 BBL. CEMENT VOLUMES RECORDED FROM BELLY MAGMETER. RECORDED 313 BBL OF CEMENT MIX WATER. DESIGN VOLUME WAS 300 BBL.
11/07/2010 22:17		Other	4					250.0	LOST RETURNS.
11/07/2010 22:17		Slow Rate	3					180.0	SLOW RATE AS PER CO.MAN.

HALLIBURTON

Date/Time	Char t #	Activity Code	Pump Rate	Cum Vol	Pump		Pressure (psig)		Comments
11/07/2010 22:21		Other	4					250.0	INCREASE RATE AS PER CO.MAN.
11/07/2010 22:43		Shutdown							END CEMENT-SHUT DOWN.
11/07/2010 22:45		Drop Top Plug	0	0				37.0	DROP TOP PLUG.
11/07/2010 22:47		Pump Displacemen t - Start	4	365				134.0	START H2O DISPLACEMENT, WASHING ON TOP OF PLUG 1st 20bbls AS PER CO.MAN.
11/07/2010 22:52		Pump Displacemen t	4					125.0	START MUD DISPLACEMENT.
11/07/2010 22:53		Other	5					300.0	INCREASE RATE, AS PER CO.MAN..
11/07/2010 23:13		Other	5.5					500.0	INCREASE RATE, AS PER CO.MAN..
11/07/2010 23:16		Other	6					615.0	INCREASE RATE, AS PER CO.MAN..
11/07/2010 23:50		Slow Rate	4					700.0	SLOW RATE AS PER CO.MAN.
11/07/2010 23:52		Pump Displacemen t	4					700.0	PUMP LAST 11bbls H2O DIPLACEMENT AS PER CO.MAN.
11/07/2010 23:55		Slow Rate	2					510.0	SLOW RATE AS PER CO.MAN.
11/07/2010 23:57		Bump Plug	2					510.0	BUMP PLUG AT 510psi.
11/07/2010 23:57		Shutdown						1110. 0	PRESSURE 600psi OVER TO 1110psi- SHUT DOWN, RECORDED 361 BBL OF 9.3 PPG, PV:19, YP:11, 8/19/21. DESIGN VOLUME WAS 365.6 BBL.

HALLIBURTON

Date/Time	Chart #	Activity Code	Pump Rate	Cum Vol	Pump		Pressure (psig)		Comments
11/08/2010 00:02		Check Floats							CHECK FLOATS-FLOATS HOLD, 2bbls BACK.
11/08/2010 00:15		Post-Job Safety Meeting (Pre Rig-Down)							DISCUSS JOB, DISCUSS BBP AND HOC OBSERVATIONS, DISCUSS SAFETY AND HAZARDS.
11/08/2010 00:30		Rig-Down Equipment							RIG IRON OFF OF RIG FLOOR.
11/08/2010 00:35		Safety Huddle							DISCUSS SAFETY AND HAZARDS.
11/08/2010 00:40		Other							WASH UP RCM TO PIT AND BLOW SILOS OFF ONTO BULK TRUCK.
11/08/2010 01:25		Safety Meeting - Pre Rig-Down							DISCUSS SAFETY AND HAZARDS.
11/08/2010 01:30		Rig-Down Equipment							RIG DOWN AND RACK UP IRON AND SUCTION HOSE.
11/08/2010 04:15		Pre-Convoy Safety Meeting							DISCUSS SAFETY AND HAZARDS OF TRAVEL.
11/08/2010 04:30		Crew Leave Location							
11/08/2010 04:30		Other							THANK YOU-KEN, KEN, JOSH, AND CREW.

The Road to Excellence Starts with Safety

Sold To #: 331699	Ship To #: 2791573	Quote #:	Sales Order #: 7742837
Customer: EXXONMOBIL CORPORATION		Customer Rep: GARDNER, KEVIN	
Well Name: PCU		Well #: 296-6A1	API/UWI #: 05-103-11475
Field: PICEANCE CREEK	City (SAP): MEEKER	County/Parish: Rio Blanco	State: Colorado
Job Purpose: Cement Intermediate Casing			
Well Type: Development Well		Job Type: Cement Intermediate Casing	
Sales Person: TURNER, JAMIE		Srvc Supervisor: DEARING, KEN	MBU ID Emp #: 239372

Job Personnel

HES Emp Name	Exp Hrs	Emp #	HES Emp Name	Exp Hrs	Emp #	HES Emp Name	Exp Hrs	Emp #
ANGLIN, JOSHUA B	15.0	462343	BROWN, DALLAS S.G.	15.0	479707	CHRISTENSEN, DON V	15.0	484613
DEAN, MARK Christophe	15.0	454214	DEARING, KEN A	15.0	239372	DUBE, MTHOKOZISI	15.0	476241
ESTEP, KENNETH	15.0	121420	SAGE, JAMES Edwin	15.0	470468			

Equipment

HES Unit #	Distance-1 way	HES Unit #	Distance-1 way	HES Unit #	Distance-1 way	HES Unit #	Distance-1 way
11263211	45 mile	10948686	45 mile	10572545	45 mile	10897817	45 mile
10872435	45 mile	10994445	45 mile	10784082	45 mile	11288856	45 mile
11410668	45 mile						

Job Hours

Date	On Location Hours	Operating Hours	Date	On Location Hours	Operating Hours	Date	On Location Hours	Operating Hours
11-07-2010	10.5	4	11-08-2010	4.5				
TOTAL			Total is the sum of each column separately					

Job

Formation Name	Formation Depth (MD)	Top	Bottom	Form Type	Job depth MD	Water Depth	Perforation Depth (MD)	From	To	Called Out	Date	Time	Time Zone
				BHST	9593. ft						07 - Nov - 2010	07:00	CST
										On Location	07 - Nov - 2010	13:30	CST
										Job Started	07 - Nov - 2010	20:00	CST
										Job Completed	08 - Nov - 2010	00:00	CST
										Departed Loc	08 - Nov - 2010	04:00	CST

Well Data

Description	New / Used	Max pressure psig	Size in	ID in	Weight lbm/ft	Thread	Grade	Top MD ft	Bottom MD ft	Top TVD ft	Bottom TVD ft
Intermediate Open Hole				9.875				4593.	9667.	4464.	9523.
Intermediate Casing	New		7.	6.276	26.	HYDRIL - SERIES 500 TYPE 513	P-110	.	9654.	.	9510.
Surface Casing	Unknown		10.75	9.95	45.5	BTC	J-55	.	4593.	.	4464.

Tools and Accessories

Type	Size	Qty	Make	Depth	Type	Size	Qty	Make	Depth	Type	Size	Qty	Make
Guide Shoe					Packer					Top Plug	7	1	Weather
Bit-Float Collar	7	1	Weath	9648.8	Bridge Plug					Bottom Plug	7	1	Weather
Float Collar	7	1	Weath	9556.7	Retainer					SSR plug set			
Insert Float										Plug Container	7	1	HES

Stage Tool										Centralizers	7	8	Weather
Miscellaneous Materials													
Gelling Agt		Conc		Surfactant		Conc		Acid Type		Qty		Conc	%
Treatment Fld		Conc		Inhibitor		Conc		Sand Type		Size		Qty	

Fluid Data										
Stage/Plug #: 1										
Fluid #	Stage Type	Fluid Name	Qty	Qty uom	Mixing Density lbm/gal	Yield ft3/sk	Mix Fluid Gal/sk	Rate bbl/min	Total Mix Fluid Gal/sk	
1	TUNED SPACER III	TUNED SPACER III - SBM (483826)	80.00	bbl	10.	.0	.0	4.0		
	38.32 gal/bbl	FRESH WATER								
	3 lbm/bbl	FE-2 (100001615)								
	59.8 lbm/bbl	BARITE, 100 LB SK (100003680)								
2	New Vernal Tuned Light	TUNED LIGHT (TM) SYSTEM (452984)	1305.0	sacks	11.	2.21	9.67	4.0	9.67	
	0.7 lbm	HR-601, 50 LB BAG (101328348)								
	10.02 Gal	FRESH WATER								
3	Drilling Fluid/Mud		361.00	bbl	9.4			5.5		
Calculated Values			Pressures		Volumes					
Displacement	365.2	Shut In: Instant	1110	Lost Returns		Cement Slurry	964	Pad		
Top Of Cement	3893	5 Min	1165	Cement Returns	0	Actual Displacement	361	Treatment		
Frac Gradient		15 Min		Spacers	0	Load and Breakdown		Total Job		
Rates										
Circulating	4	Mixing	4	Displacement	5.5	Avg. Job	4.5			
Cement Left In Pipe	Amount	98.76 ft	Reason	Shoe Joint						
Frac Ring # 1 @	ID	Frac ring # 2 @	ID	Frac Ring # 3 @	ID	Frac Ring # 4 @	ID			
The Information Stated Herein Is Correct				Customer Representative Signature						

HALLIBURTON

Lab Data

HALLIBURTON

Cementing Rockies, Vernal

LAB RESULTS - Primary

Job Information

Request/Slurry	108217/2	Rig Name	H&P 239	Date	November 10, 2010
Submitted By	Simukayi Mutasa	Job Type	Intermediate Casing	Bulk Plant	Vernal
Customer	ExxonMobil	Location	Rio Blanco	Well	PCU 296-6A1

Well Information

Casing/Liner Size	7"	Depth MD	9593 ft	BHST	210 F
Hole Size	9 7/8"	Depth TVD	9449 ft	BHCT	154 F

Cement Information - Primary Design

Conc	UOM	Cement/Additive	Sample Type	Sample Date	Lot No.	Cement Properties		
Tuned Light						Slurry Density	11.00	PPG
100.00	% BWO	Cement Blend				Slurry Yield	2.21	FT3
						Water Requirement	9.67	GPS
36.88	%	> Boral Craig Pozmix	Bulk	Oct 31, 2010				
11	%	> HGS 6000 dry blended	Bulk	Oct 31, 2010				
53.19	%	> Holcim Type V	Bulk	Oct 31, 2010				
13	%	> Silicalite - Compacted	Bulk	Oct 31, 2010				
0.70	lb/sk	HR-601	Bulk	Oct 31, 2010	22HR07X0 6S3GW	Water Source	Fresh Water	
0.50	lb/sk	D-Air 3000	Bulk	Oct 31, 2010	2010239A C	Water Chloride	N/A	Ppm
0.20	lb/sk	FWCA	Bulk	Oct 31, 2010	37340			
80.73	L/100kg	Fresh Water	Lab	Jul 07, 2010	07/07/2010			

Operation Test Results Request ID 108217/2

Thickening Time, Request Test ID:1126238, Historical Data

Temp (°F)	Pressure (psi)	Reached in (min)	Start BC	30 Bc (hh:mm)	50 Bc (hh:mm)	70 Bc (hh:mm)	100 Bc (hh:mm)
154	5,914	40	18	03:24	03:45	04:15	04:49

Operation Test Results Request ID 108217/1

UCA Comp. Strength, Request Test ID:1123168, Historical Data

End Temp (°F)	Pressure (psi)	50 psi (hh:mm)	500 psi (hh:mm)	12 hr CS (psi)	24 hr CS (psi)	48 hr CS (psi)	End CS (psi)	End Time (hrs)
191	3,000	05:23	06:45	1,233	1,305	1,309	1,341	72

Marsh Funnel, Request Test ID:1123173, Historical Data

Volume [ml]	Time [Sec]	Foam Quality
42	85	0

Free Water, Request Test ID:1123170, Historical Data

Test Temp (°F)	% FW 45 Inc	Conditioning time
154	0	30

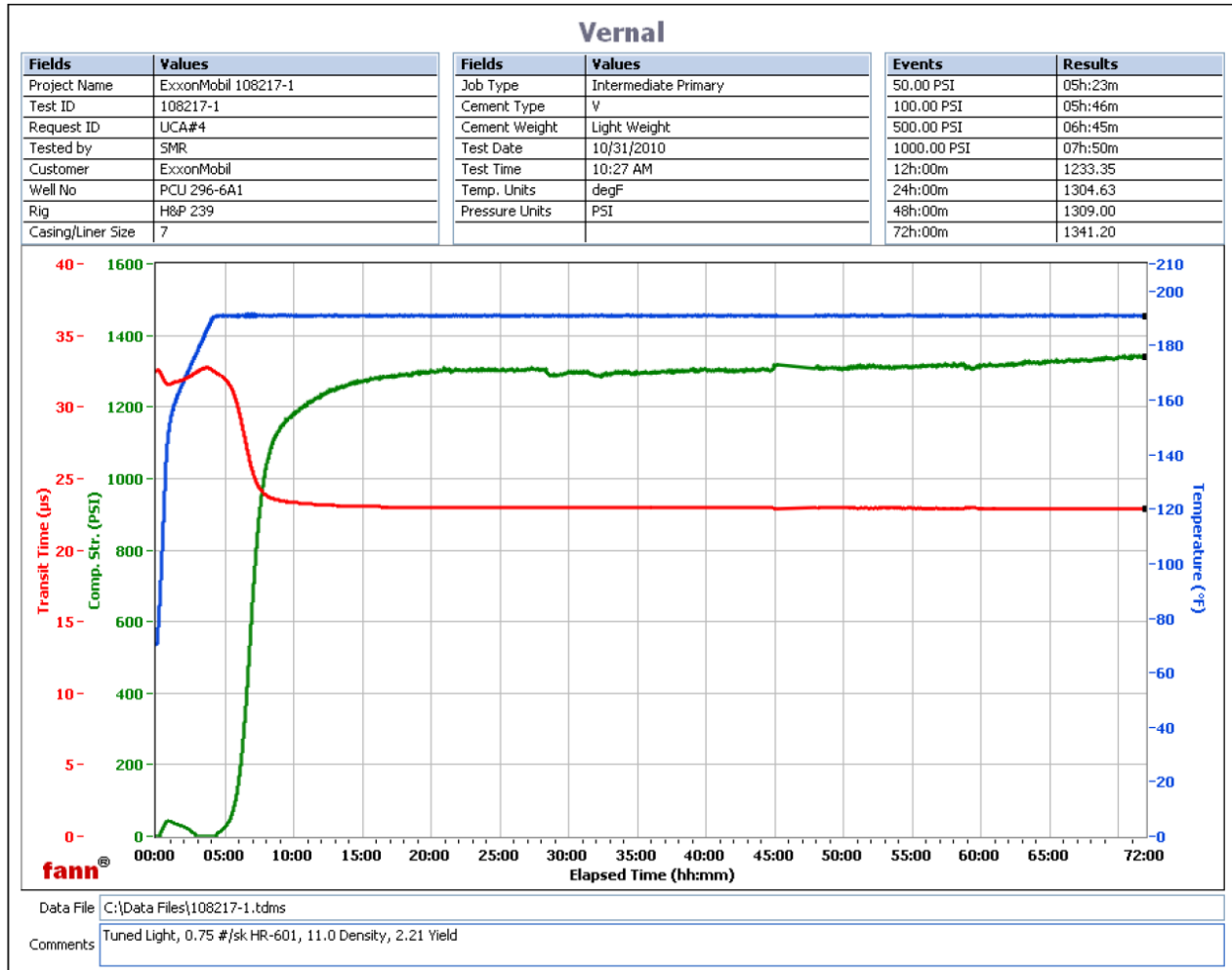
API Rheology, Request Test ID:1123169, Historical Data

HALLIBURTON

Temp (°F)	600	300	200	100	60	30	6	3	Cond Time (min)	PV/YP
80	226	157	122	82	68	57	41	35	0	118.9 / 42.9

API Fluid Loss, Request Test ID:1123171, Historical Data

Test Temp (°F)	Test Pressure (psi)	Test Time (min)	Meas. Vol (< 30 min, cc)	Extr. ISO FL (cc/30 min)	Conditioning time (min)
154	1,000	5.45	40	188	30



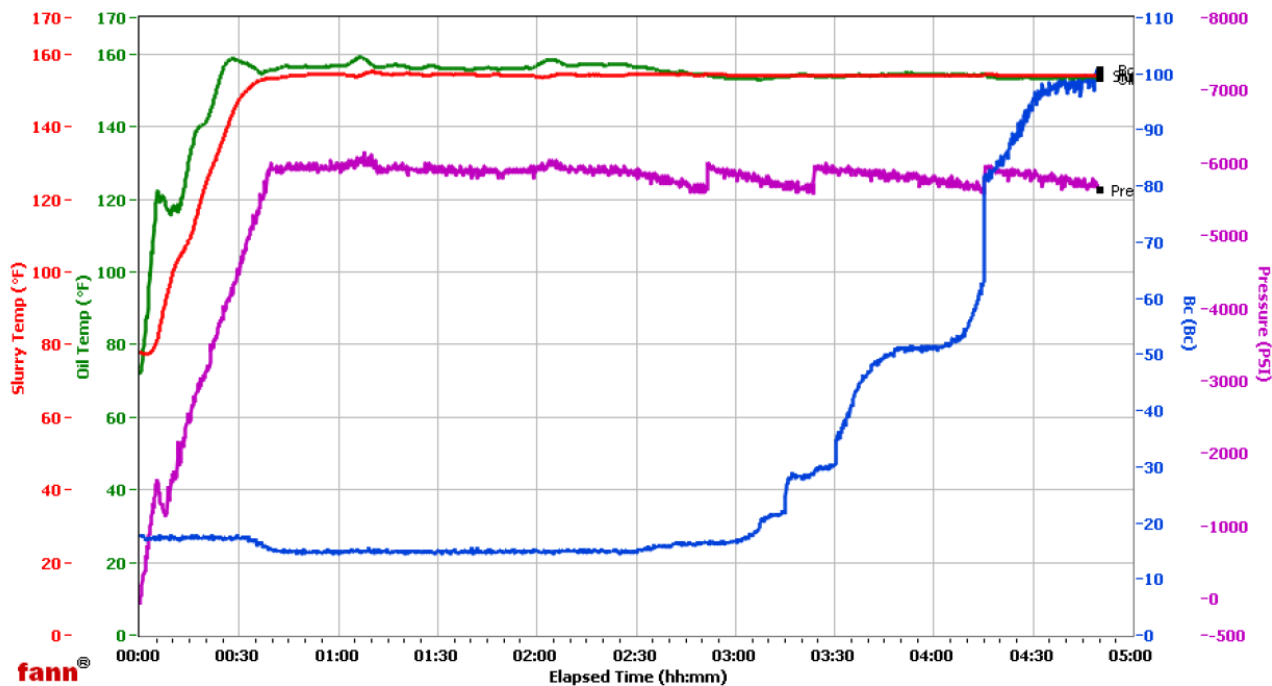
HALLIBURTON

VERNAL

Fields	Values
Project Name	EXXONMOBIL 108217-2
Test ID	108217-2
Request ID	HPHT #5
Tested by	PBL
Customer	EXXONMOBIL
Well No	PCU 296-6A1
Rig	H8P239
Casing/Liner Size	7

Fields	Values
Job Type	INTERMEDIATE PRIMARY
Cement Type	V
Cement Weight	Light Weight
Test Date	11/02/10
Test Time	05:08 PM
Temp. Units	degF
Pressure Units	PSI

Events	Results
30.00 Bc	03h:24m
50.00 Bc	03h:45m
60.00 Bc	04h:13m
70.00 Bc	04h:15m
100.00 Bc	04h:49m
200.00 Bc	NaN
03h:00m	16.61
06h:00m	NaN



Data File O:\HPHT Data Files\Vernal Consistometer #5\EXXONMOBIL 108217-2.tdms

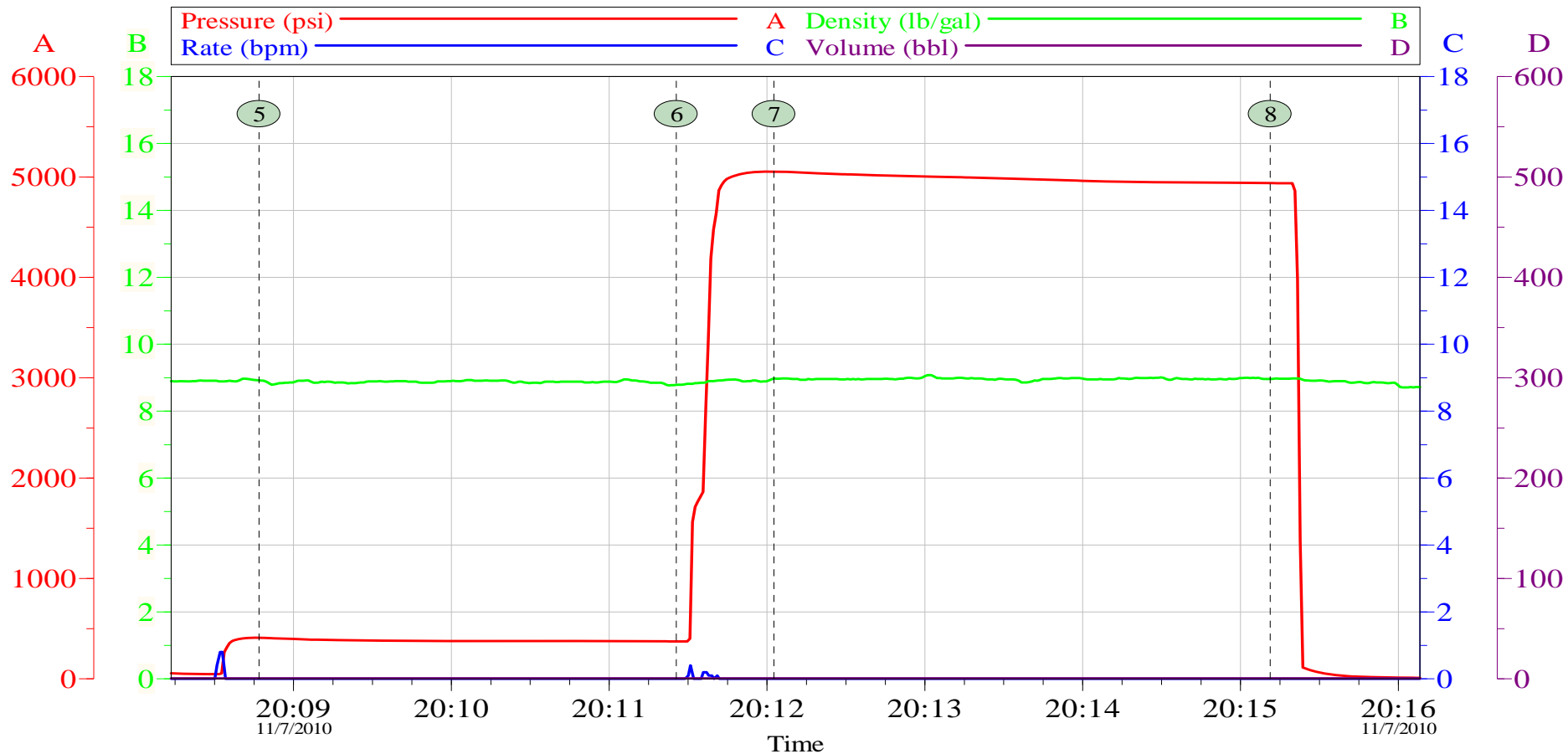
Comments TYPE V/POZ 53.19/36.88%, FWCA 0.20 LB/SK, DEN 10.999, YLD 2.21

HALLIBURTON

Data Acquisition

XOM PCU 296-6A1 7" Intermediate Cement Job

Pressure Test

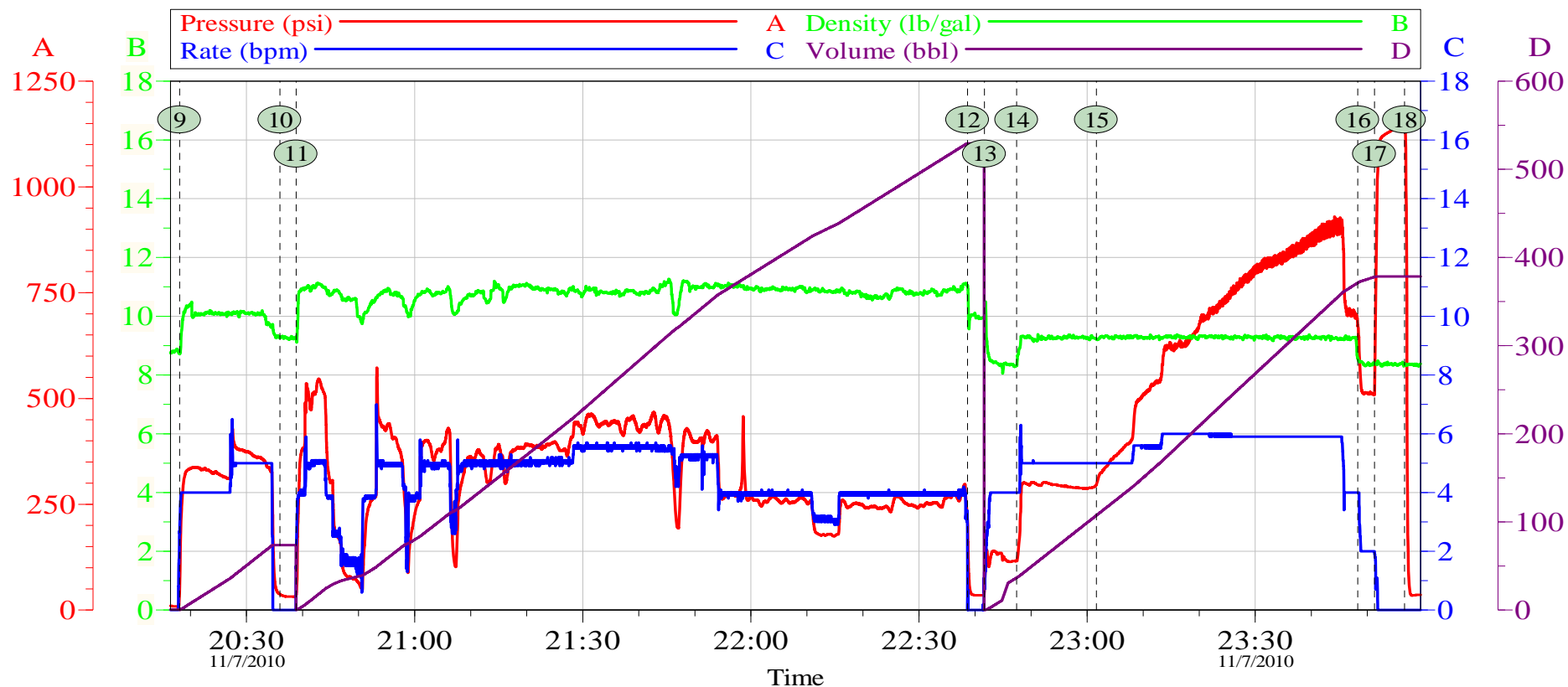


5	Start Low Pressure Test	20:08:47	6	End Low Pressure Test	20:11:26
7	Start High Pressure Test	20:12:03	8	End High Pressure Test	20:15:11

Customer:	EXXONMOBIL CORPORATION	Job Date:	07-Nov-2010	Sales Order #:	7742837
Well Description:	PCU 296-6A1	UWI:	05-103-11475	String:	Intermediate
Service Lead:	Ken Estep Sr.	Service Sup:	Ken Dearing	Engineer:	Josh Anglin

OptiCem v6.4.9
08-Nov-10 00:30

XOM PCU 296-6A1 7" Intermediate Cement Job



9 Pump 10# Tuned Spacer III	20:18:03	10 Drop Bottom Plug	20:35:57
11 Pump 11# Tuned Light	20:38:51	12 Drop Top Plug	22:38:40
13 Pump Water Displacement	22:41:40	14 Pump 9.3# Mud Displacement	22:47:26
15 Caught Cement	23:01:39	16 Pump Water Displacement	23:48:17
17 Bump Plug	23:51:17	18 Check Floats	23:56:38

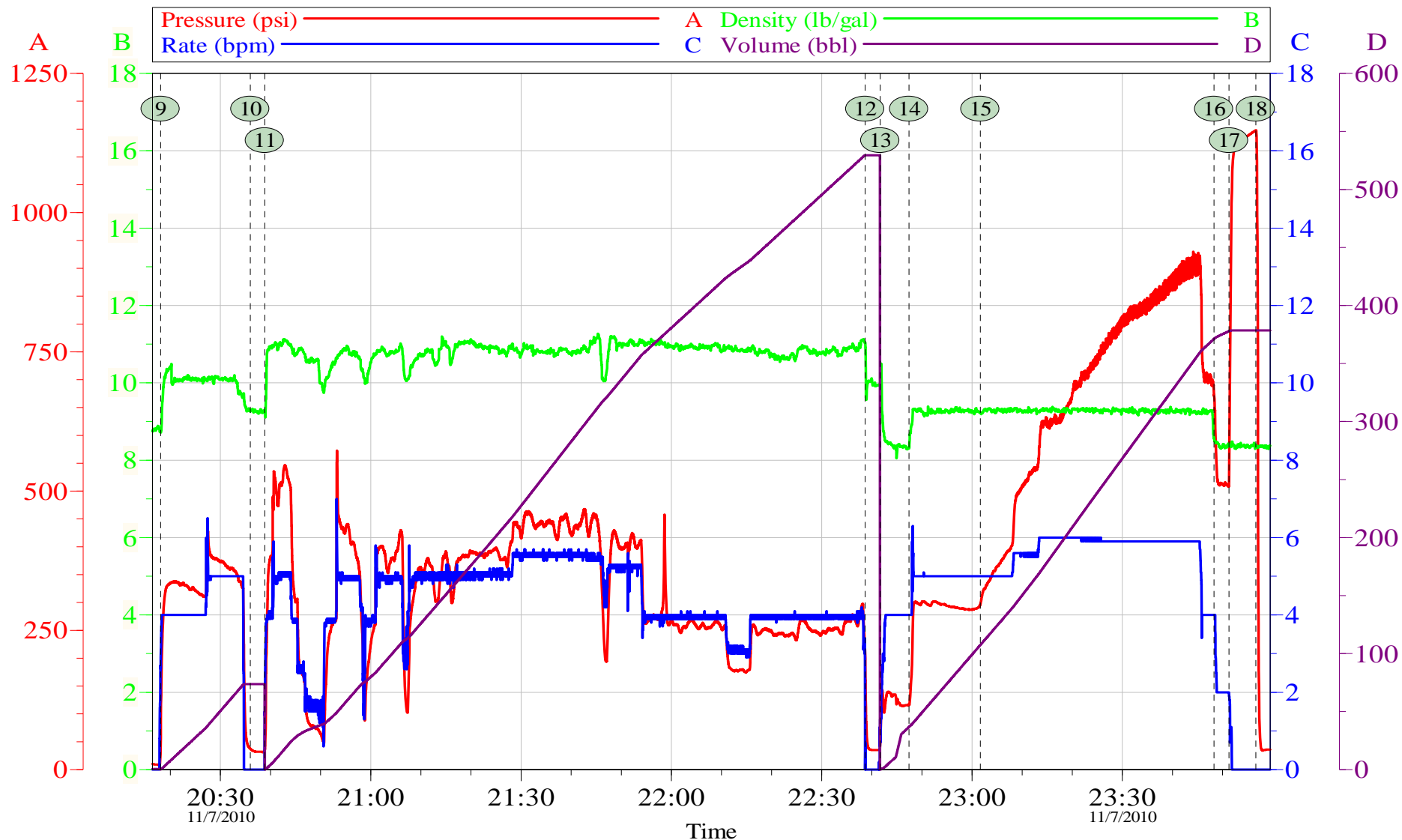
Customer: EXXONMOBIL CORPORATION
Well Description: PCU 296-6A1
Service Lead: Ken Estep Sr.

Job Date: 07-Nov-2010
UWI: 05-103-11475
Service Sup: Ken Dearing

Sales Order #: 7742837
String: Intermediate
Engineer: Josh Anglin

OptiCem v6.4.9
08-Nov-10 00:29

XOM PCU 296-6A1 7" Intermediate Cement Job



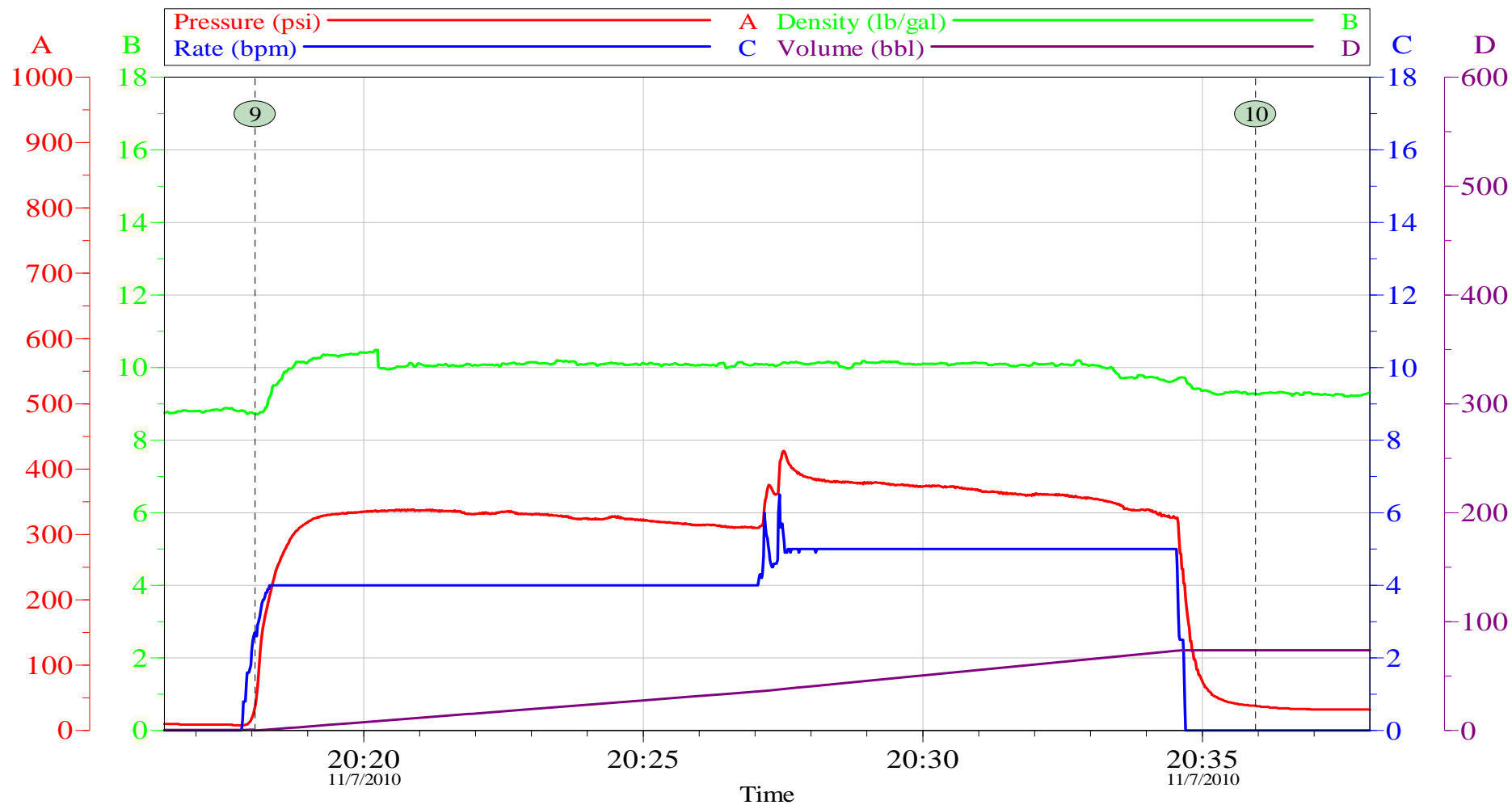
Customer: EXXONMOBIL CORPORATION
 Well Description: PCU 296-6A1
 Service Lead: Ken Estep Sr.

Job Date: 07-Nov-2010
 UWI: 05-103-11475
 Service Sup: Ken Dearing

Sales Order #: 7742837
 String: Intermediate
 Engineer: Josh Anglin

OptiCem v6.4.9
 08-Nov-10 00:29

XOM PCU 296-6A1 7" Intermediate Cement Job

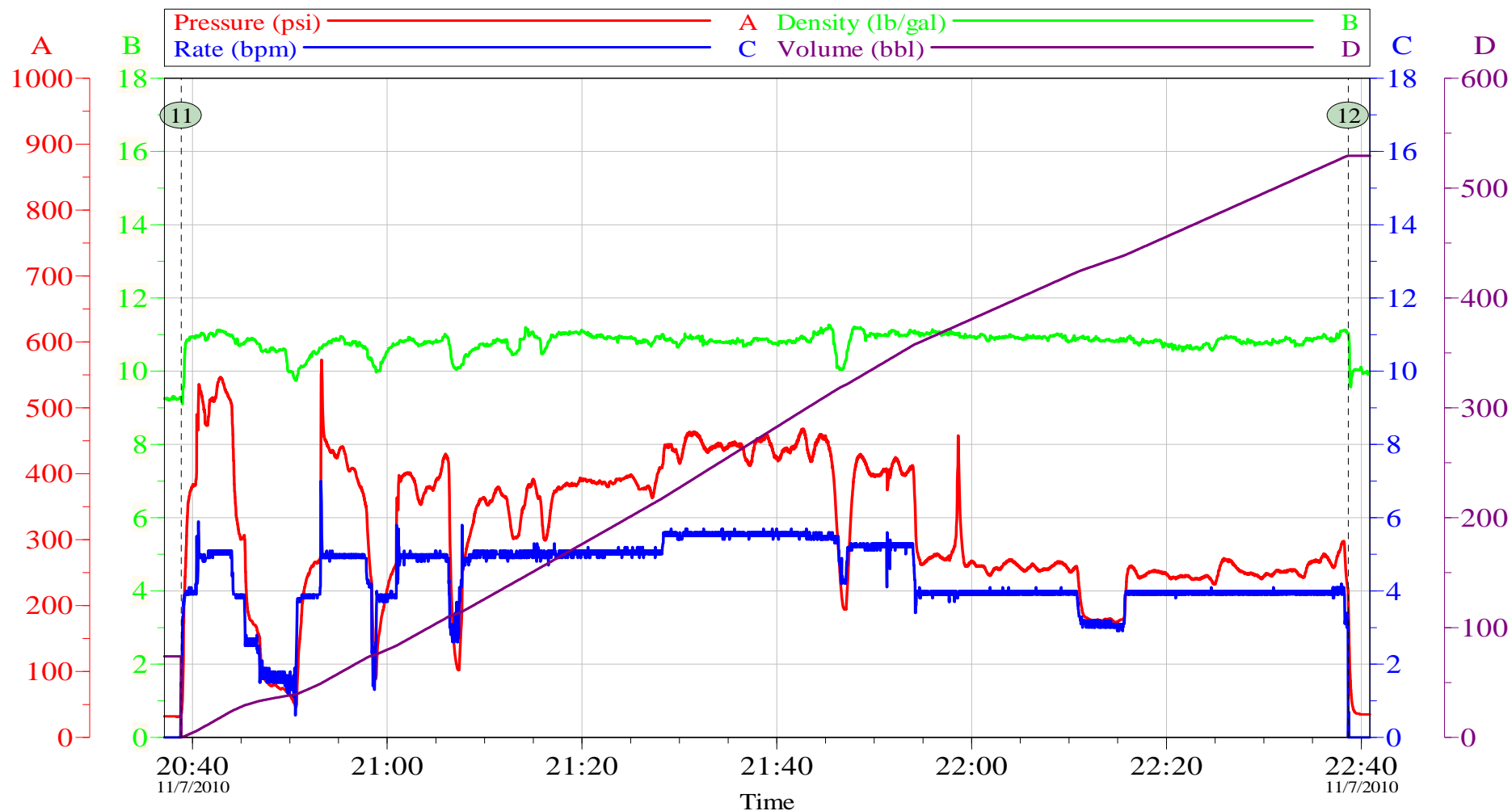


9 Pump 10# Tuned Spacer III 20:18:03 10 Drop Bottom Plug 20:35:57

Customer: EXXONMOBIL CORPORATION	Job Date: 07-Nov-2010	Sales Order #: 7742837
Well Description: PCU 296-6A1	UWI: 05-103-11475	String: Intermediate
Service Lead: Ken Estep Sr.	Service Sup: Ken Dearing	Engineer: Josh Anglin

OptiCem v6.4.9
08-Nov-10 00:28

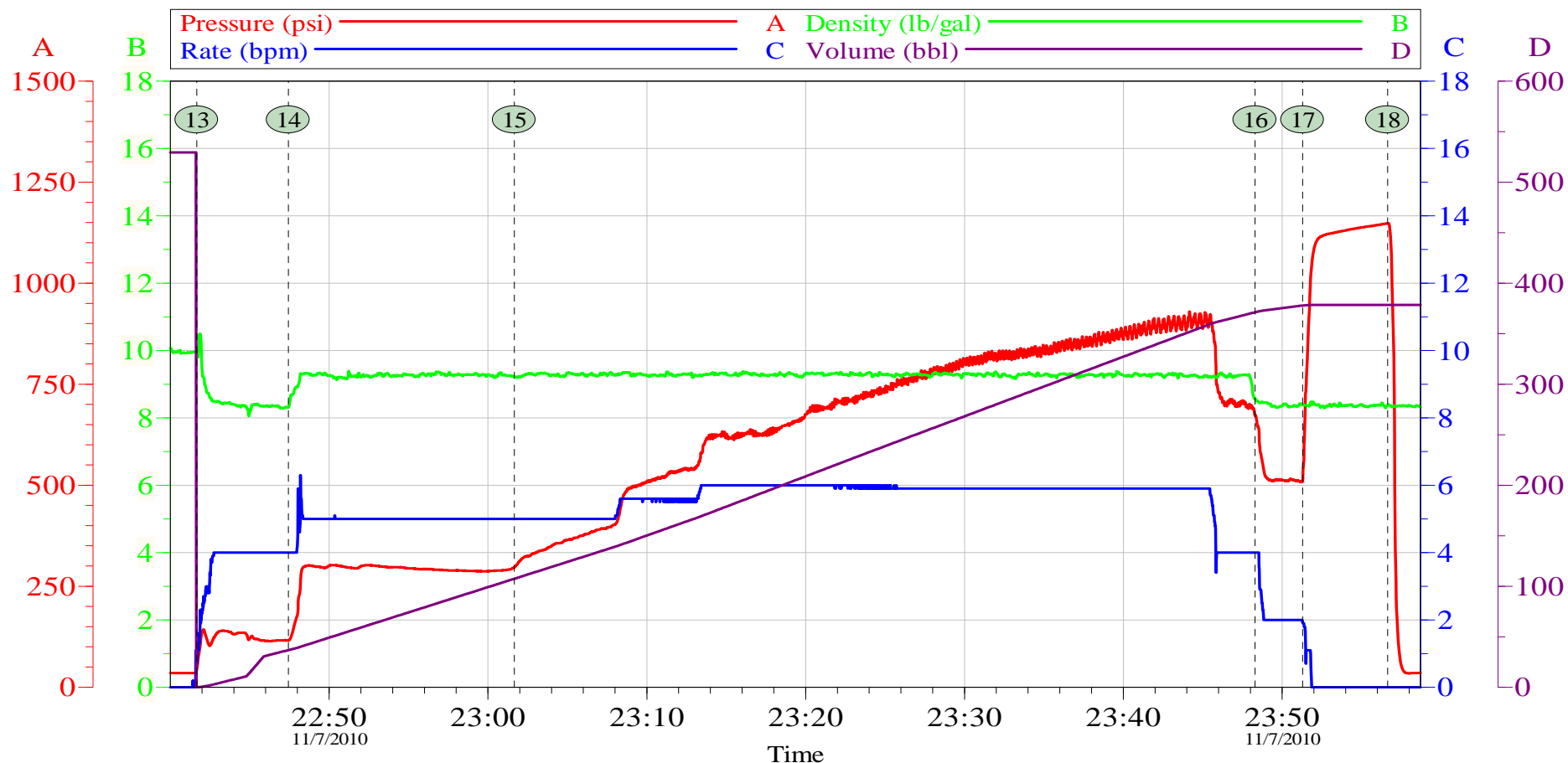
XOM PCU 296-6A1 7" Intermediate Cement Job



Customer:	EXXONMOBIL CORPORATION	Job Date:	07-Nov-2010	Sales Order #:	7742837
Well Description:	PCU 296-6A1	UWI:	05-103-11475	String:	Intermediate
Service Lead:	Ken Estep Sr.	Service Sup:	Ken Dearing	Engineer:	Josh Anglin

OptiCem v6.4.9
08-Nov-10 00:27

XOM PCU 296-6A1 7" Intermediate Cement Job



⑬ Pump Water Displacement	22:41:40	⑭ Pump 9.3# Mud Displacement	22:47:26
⑮ Caught Cement	23:01:39	⑯ Pump Water Displacement	23:48:17
⑰ Bump Plug	23:51:17	⑱ Check Floats	23:56:38

Customer: EXXONMOBIL CORPORATION	Job Date: 07-Nov-2010	Sales Order #: 7742837
Well Description: PCU 296-6A1	UWI: 05-103-11475	String: Intermediate
Service Lead: Ken Estep Sr.	Service Sup: Ken Dearing	Engineer: Josh Anglin

OptiCem v6.4.9
08-Nov-10 00:27