

**SYNERGY RESOURCES CORPORATION
20203 HIGHWAY 60
PLATTEVILLE, Colorado**

SRC 34-32

ENSIGN 122

Post Job Summary **Cement Production Casing**

Prepared for: Don Libhart
Date Prepared: 11/11/09
Version: 1

Service Supervisor: Michael Blake

Submitted by: Wesley Aaron

HALLIBURTON

HALLIBURTON

Service Supervisor Reports

Job Log

Date/Time	Chart #	Activity Code	Pump Rate	Cum Vol	Pump		Pressure (psig)	Comments
11/08/2009 12:30		Arrive at Location from Service Center						
11/08/2009 13:00		Safety Huddle						
11/08/2009 14:30		Safety Meeting						
11/08/2009 14:57		Start Job						
11/08/2009 14:59		Test Lines	0.5	1			4515.0	TEST PUMPS AND LINES
11/08/2009 15:00		Pump Water	3	10			315.0	PUMP WATER SPACER
11/08/2009 15:04		Pump Spacer 1	4	24			305.0	PUMP MUD FLUSH
11/08/2009 15:13		Pump Lead Cement	7	155			160.0	PUMP (350 sks) OF VERSACEM AT 12.0#
11/08/2009 15:36		Pump Tail Cement	5	79			120.0	PUMP (225 sks) OF VERSACEM AT 13.0#
11/08/2009 15:52		Drop Top Plug						SHUT DOWN AND DROP PLUG AND CLEAN LINES
11/08/2009 15:54		Pump Displacement	6	120			1235.0	PUMP DISPLACEMENT WITH WATER
11/08/2009 16:15		Bump Plug					2575.0	BUMP PLUG AND RELEASED BACK AND CHECK FLOATS HELD
11/08/2009 16:19		End Job						

The Road to Excellence Starts with Safety

Sold To #: 359915	Ship To #: 2752810	Quote #:	Sales Order #: 6994051
Customer: SYNERGY RESOURCES CORPORATION		Customer Rep: Libhart, Don	
Well Name: SRC		Well #: 34-32	API/UWI #: 05-123-30036-00
Field: WATTEBERG	City (SAP): GREELEY	County/Parish: Weld	State: Colorado
Contractor: ENSIGN		Rig/Platform Name/Num: 122	
Job Purpose: Cement Production Casing			
Well Type: Development Well		Job Type: Cement Production Casing	
Sales Person: FLING, MATTHEW		Srv Supervisor: BLAKE, MICHAEL	MBU ID Emp #: 305760

Job Personnel

HES Emp Name	Exp Hrs	Emp #	HES Emp Name	Exp Hrs	Emp #	HES Emp Name	Exp Hrs	Emp #
BLAKE, MICHAEL James		305760	FONVILLE, JOHN Thomas		453755	MCPHERSON, MATTHEW L		455378
SINCLAIR, RICHARD		368195						

Equipment

HES Unit #	Distance-1 way	HES Unit #	Distance-1 way	HES Unit #	Distance-1 way	HES Unit #	Distance-1 way
10804557C	35 mile	10824253C	35 mile				

Job Hours

Date	On Location Hours	Operating Hours	Date	On Location Hours	Operating Hours	Date	On Location Hours	Operating Hours
TOTAL								

Total is the sum of each column separately

Job

Job Times

Formation Name	Formation Depth (MD)	Top	Bottom	Form Type	Job depth MD	Water Depth	Perforation Depth (MD)	Date	Time	Time Zone
				BHST	7717. ft			08 - Nov - 2009	08:00	MST
								08 - Nov - 2009	12:30	MST
								08 - Nov - 2009	14:57	MST
								08 - Nov - 2009	16:19	MST
								08 - Nov - 2009	17:30	MST

Well Data

Description	New / Used	Max pressure psig	Size in	ID in	Weight lbm/ft	Thread	Grade	Top MD ft	Bottom MD ft	Top TVD ft	Bottom TVD ft
Open Hole				7.875				596.	7725.		
Production Casing	New		4.5	4.	11.6			.	7717.		
Surface Casing	Unknown		8.625	8.097	24.		J-55	.	596.		

Sales/Rental/3rd Party (HES)

Description	Qty	Qty uom	Depth	Supplier
SHOE,FLT,4-1/2 8RD,2-3/4 SSII	1	EA		
CLR,FLT,4-1/2 8RD,9.5-13.5PPF,2-3/4	1	EA		
CENTRALIZER ASSY - API - 4-1/2 CSG X	30	EA		
CLAMP - LIMIT - 4-1/2 - HINGED -	1	EA		
PLUG,CMTG,TOP,4 1/2,HWE,3.65 MIN/4.14 MA	1	EA		
KIT,HALL WELD-A	1	EA		

Tools and Accessories													
Type	Size	Qty	Make	Depth	Type	Size	Qty	Make	Depth	Type	Size	Qty	Make
Guide Shoe					Packer					Top Plug			
Float Shoe					Bridge Plug					Bottom Plug			
Float Collar					Retainer					SSR plug set			
Insert Float										Plug Container			
Stage Tool										Centralizers			

Miscellaneous Materials									
Gelling Agt		Conc		Surfactant		Conc		Acid Type	
Treatment Fld		Conc		Inhibitor		Conc		Sand Type	
								Qty	Conc %
								Size	Qty

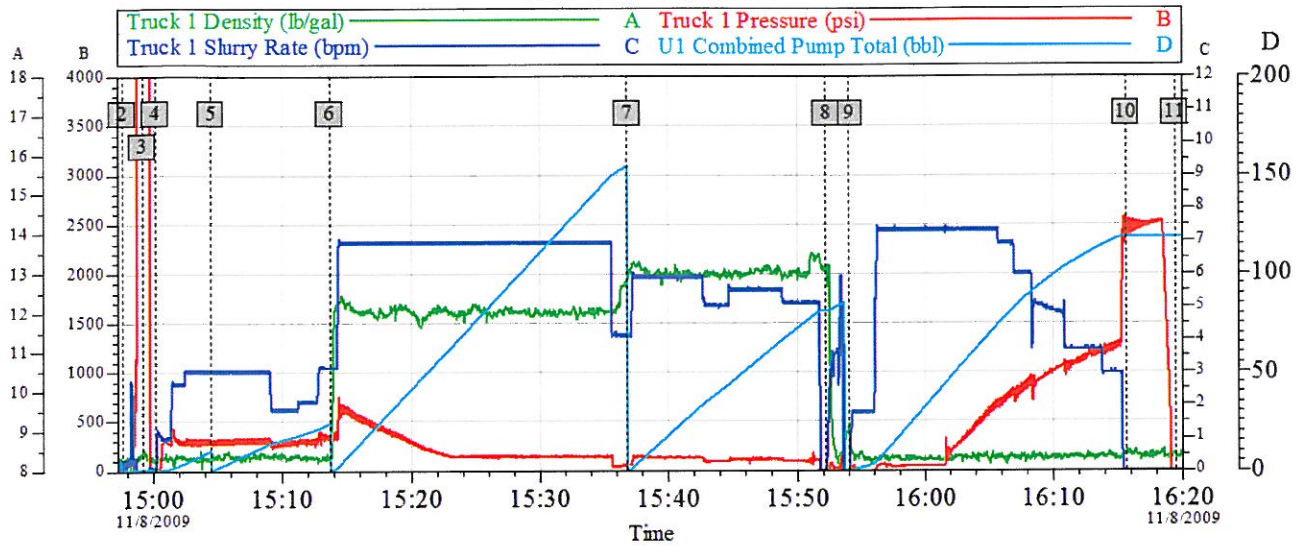
Fluid Data									
Stage/Plug #: 1									
Fluid #	Stage Type	Fluid Name	Qty	Qty uom	Mixing Density lbm/gal	Yield ft ³ /sk	Mix Fluid Gal/sk	Rate bbl/min	Total Mix Fluid Gal/sk
1	Water Spacer		10.00	bbl	8.33	.0	.0	5.0	
2	MUD FLUSH III	MUD FLUSH III - SBM (528788)	24.00	bbl	8.4	.0	.0	5.0	
3	Versacem 12#	VERSACEM (TM) SYSTEM (452010)	350.0	sacks	12.	2.49	13.91	5.0	13.91
4	Versacem 13#	VERSACEM (TM) SYSTEM (452010)	225.0	sacks	13.	1.96	9.93	5.0	9.93

Calculated Values		Pressures		Volumes			
Displacement		Shut In: Instant		Lost Returns		Cement Slurry	
Top Of Cement		5 Min		Cement Returns		Actual Displacement	
Frac Gradient		15 Min		Spacers		Load and Breakdown	
						Pad	
						Treatment	
						Total Job	

Rates									
Circulating		Mixing		Displacement		Avg. Job			
Cement Left In Pipe	Amount	14 ft	Reason	Shoe Joint					
Frac Ring # 1 @	ID	Frac ring # 2 @	ID	Frac Ring # 3 @	ID	Frac Ring # 4 @	ID		

The Information Stated Herein Is Correct	Customer Representative Signature
--	-----------------------------------

Synergy Resources - SRC 34-32 4.5" Production



Global Event Log			
Intersection	TIP	Intersection	TIP
2 Start Job	14:57:38 -22.16	3 Test Lines	14:59:12 4357
4 Pump Water	15:00:11 -20.87	5 Pump Mud Flush	15:04:30 290.8
6 Pump Versacem Cmt. @ 12.0#	15:13:45 351.3	7 Pump Versacem Cmt. @ 13.0#	15:36:52 58.48
8 Drop Plug	15:52:12 -26.97	9 Pump Displacement	15:54:00 -31.79
10 Bump Plug	16:15:37 2431	11 End Job	16:19:24 -41.20

Customer:	Job Date: 08-Nov-2009	Sales Order #: 6994051
Well Description:	UWI:	

HALLIBURTON
OptiCem v6.4.2
08-Nov-09 16:23