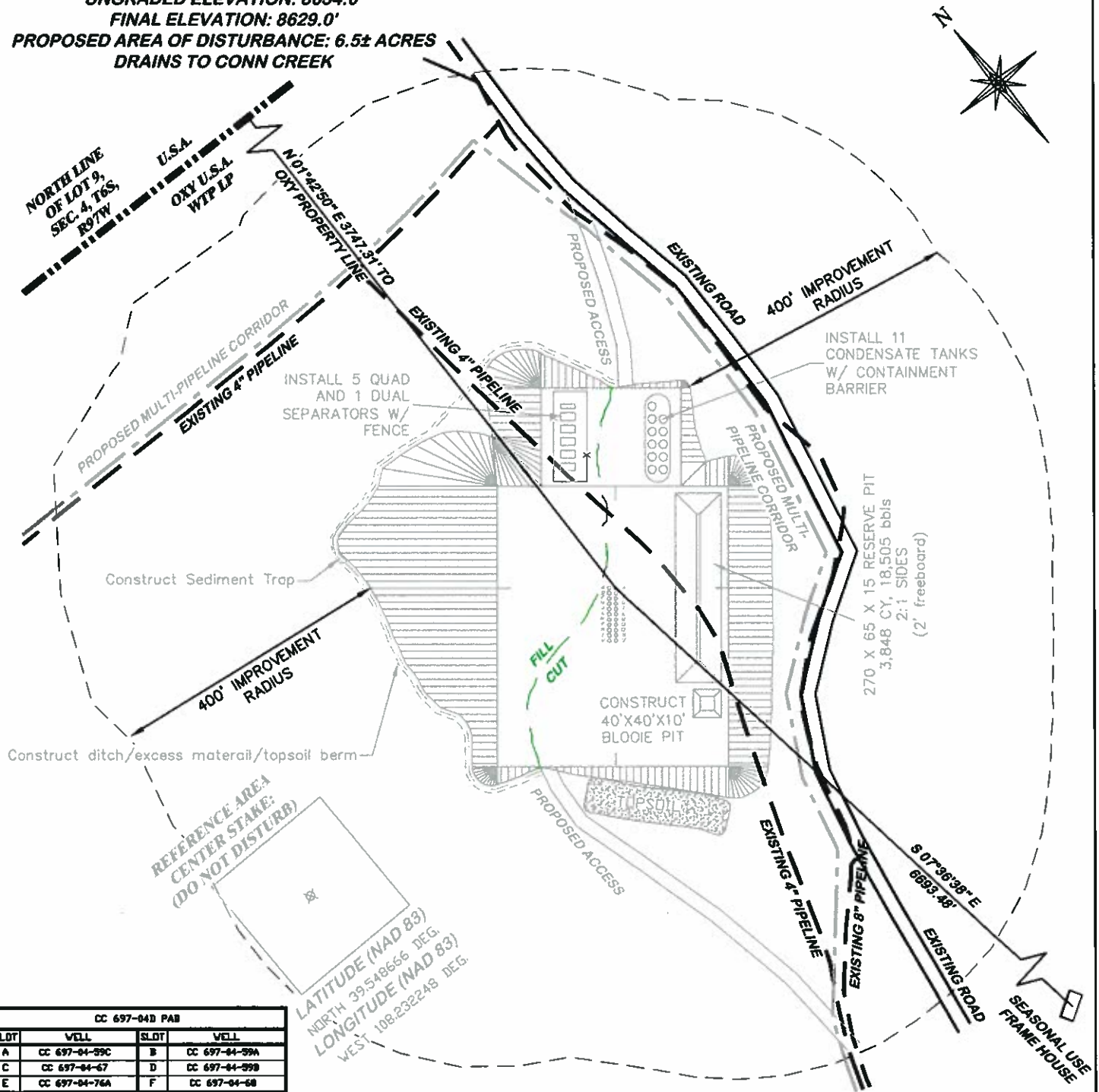


UNGRADED ELEVATION: 8634.0'  
 FINAL ELEVATION: 8629.0'  
 PROPOSED AREA OF DISTURBANCE: 6.5± ACRES  
 DRAINS TO CONN CREEK



CC 697-04D PAD			
SLOT	WELL	SLOT	WELL
A	CC 697-04-59C	B	CC 697-04-59A
C	CC 697-04-67	D	CC 697-04-59B
E	CC 697-04-76A	F	CC 697-04-68
G	CC 697-04-76B	H	CC 697-04-57A
I	CC 697-04-84A	J	CC 697-04-57B
K	CC 697-04-84B	L	CC 697-04-63A
M	CC 697-09-04A	N	CC 697-09-63A
O	CC 697-09-04B	P	CC 697-09-63B
Q	OPEN	R	CC 697-04-65B
S	CC 697-09-12	T	CC 697-04-74A
U	CC 697-09-02A	V	CC 697-04-82

**BEFORE DIGGING  
 CALL FOR  
 UTILITY LINE LOCATION**

**CC 697-04D PAD**



**RIFFIN & ASSOCIATES, INC.**

(307) 382-5028

1414 ELK ST., ROCK SPRINGS, WY 82901

DATE: 4/13/11 - DEH

SCALE: 1" = 200'

REVISED: N/A

DRG JOB No. 18310

EXHIBIT 2D

#### LOCATION DRAWING

#### OXY USA WTP LP

**CASCADE CREEK 697-04-57A, 57B, 59A, 59B, 59C, 65A, 65B, 67, 68, 74A, 76A, 76B, 82, 84A, 84B, 05-63A, 63B, 09-02A, 04A, 04B, 12 NWSW SECTION 4, T. 6 S., R. 97 W., 6th P.M., GARFIELD COUNTY, COLORADO**