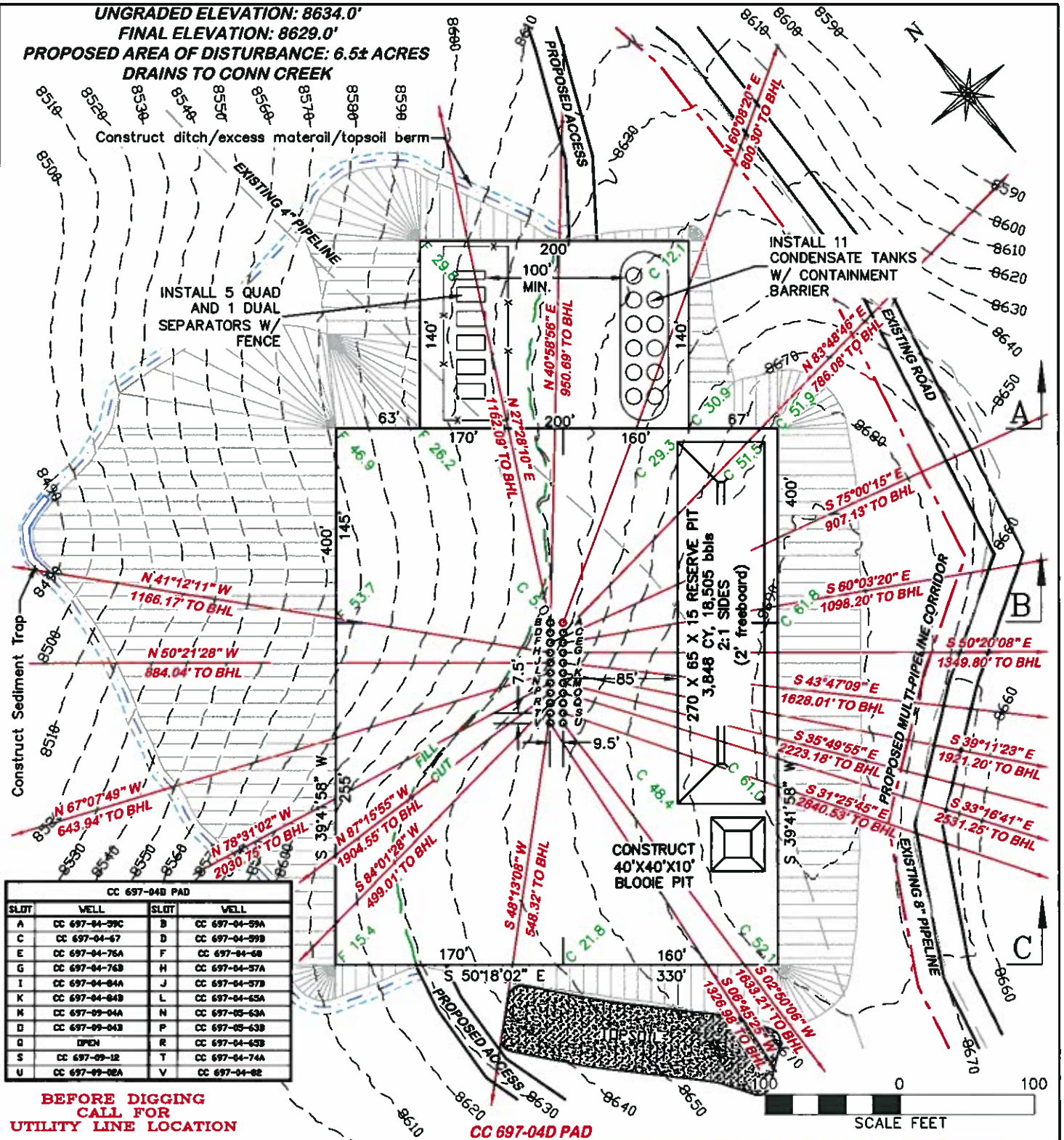


UNGRADED ELEVATION: 8634.0'
 FINAL ELEVATION: 8629.0'
 PROPOSED AREA OF DISTURBANCE: 6.5± ACRES
 DRAINS TO CONN CREEK



CC 697-04B PAD			
SLOT	WELL	SLOT	WELL
A	CC 697-04-59C	B	CC 697-04-59A
C	CC 697-04-67	D	CC 697-04-59B
E	CC 697-04-76A	F	CC 697-04-68
G	CC 697-04-76B	H	CC 697-04-57A
I	CC 697-04-84A	J	CC 697-04-57B
K	CC 697-04-84B	L	CC 697-04-63A
M	CC 697-09-04A	N	CC 697-05-63A
D	CC 697-09-04B	P	CC 697-05-63B
Q	OPEN	R	CC 697-04-63B
S	CC 697-09-12	T	CC 697-04-74A
U	CC 697-09-02A	V	CC 697-04-82

**BEFORE DIGGING
 CALL FOR
 UTILITY LINE LOCATION**

NOTE: THE EARTH QUANTITIES ON
 THIS DRAWING ARE ESTIMATED AND
 THE USE OF SAID QUANTITIES IS AT
 THE RESPONSIBILITY OF THE USER.

DRG RIFFIN & ASSOCIATES, INC.
 1414 ELK ST., ROCK SPRINGS, WY 82901
 (307) 362-5028

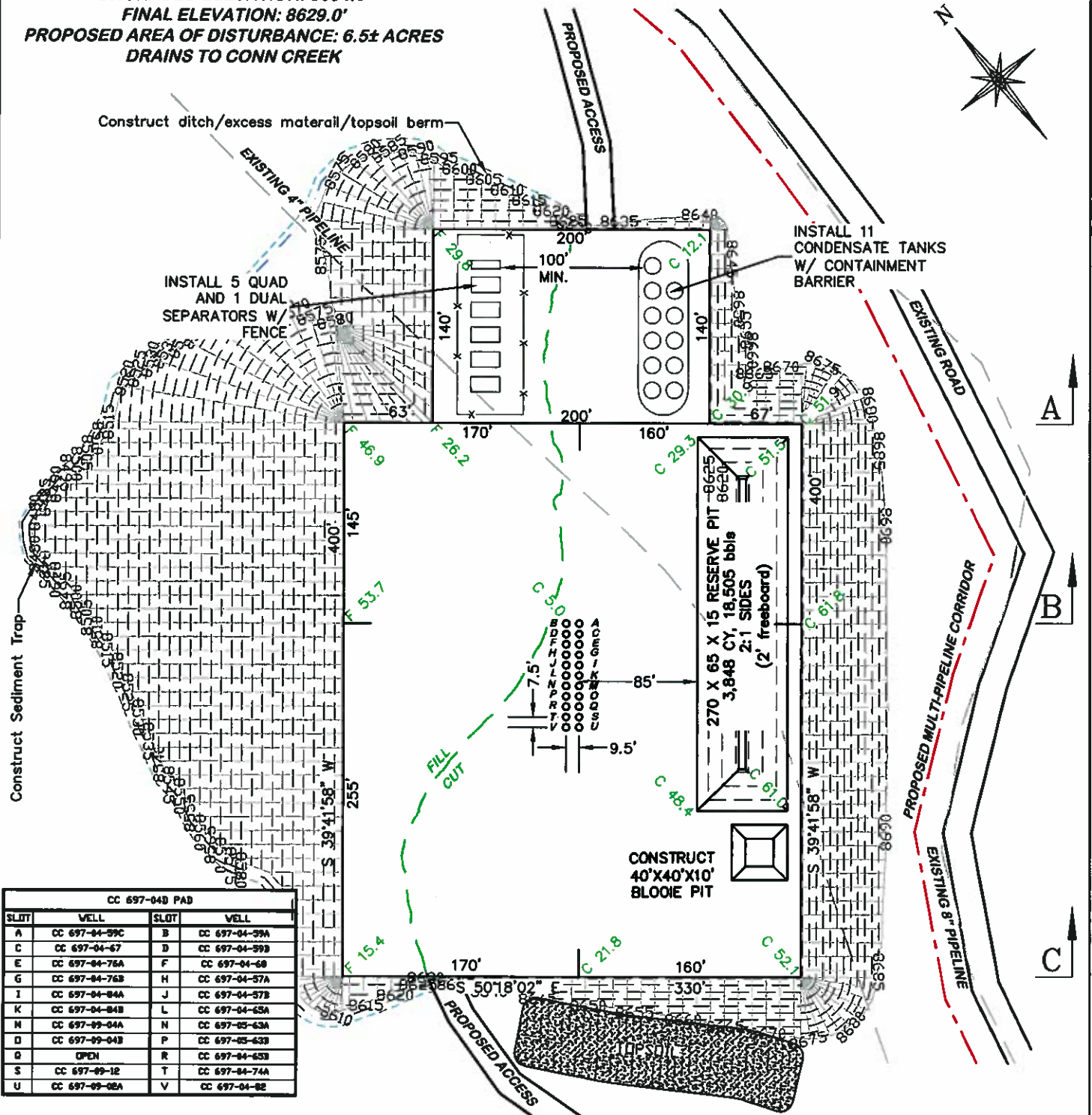
CONSTRUCTION LAYOUT DRAWING 1 OF 5

OXY USA WTP LP
 CASCADE CREEK 697-04-57A, 57B, 59A, 59B, 59C,
 65A, 65B, 67, 68, 74A, 76A, 76B, 82, 84A, 84B,
 05-63A, 63B, 09-02A, 04A, 04B, 12
 NWSW SECTION 4, T. 6 S., R. 97 W., 6th P.M.,
 GARFIELD COUNTY, COLORADO

ESTIMATED EARTHWORK

ITEM	CUT	FILL	TOPSOIL	EXCESS
PAD	152,017 CY	98,625 CY	2,963 CY	50,429 CY
PIT	5,167 CY			5,167 CY
TOTALS	157,184 CY	98,625 CY	2,963 CY	55,596 CY

UNGRADED ELEVATION: 8634.0'
 FINAL ELEVATION: 8629.0'
 PROPOSED AREA OF DISTURBANCE: 6.5± ACRES
 DRAINS TO CONN CREEK



CC 697-04D PAD			
SLOT	WELL	SLOT	WELL
A	CC 697-04-59C	B	CC 697-04-59A
C	CC 697-04-67	D	CC 697-04-59B
E	CC 697-04-76A	F	CC 697-04-68
G	CC 697-04-76B	H	CC 697-04-57A
I	CC 697-04-84A	J	CC 697-04-57B
K	CC 697-04-84B	L	CC 697-04-65A
M	CC 697-09-04A	N	CC 697-05-63A
O	CC 697-09-04B	P	CC 697-05-63B
Q	OPEN	R	CC 697-04-65B
S	CC 697-09-12	T	CC 697-04-74A
U	CC 697-09-02A	V	CC 697-04-82

**BEFORE DIGGING
 CALL FOR
 UTILITY LINE LOCATION**

NOTE: THE EARTH QUANTITIES ON
 THIS DRAWING ARE ESTIMATED AND
 THE USE OF SAID QUANTITIES IS AT
 THE RESPONSIBILITY OF THE USER.

DESIGN CONTOURS

CC 697-04D PAD



CONSTRUCTION LAYOUT DRAWING 3 OF 5

DESIGN CONTOURS

OXY USA WTP LP

**CASCADE CREEK 697-04-57A, 57B, 59A, 59B,
 59C, 65A, 65B, 67, 68, 74A, 76A, 76B, 82, 84A,
 84B, 05-63A, 63B, 09-02A, 04A, 04B, 12
 NWSW SECTION 4, T. 6 S., R. 97 W., 6th P.M.,
 GARFIELD COUNTY, COLORADO**



RIFFIN & ASSOCIATES, INC.

(307) 362-5028

1414 ELK ST., ROCK SPRINGS, WY 82901

DATE: 4/13/11 - DEH

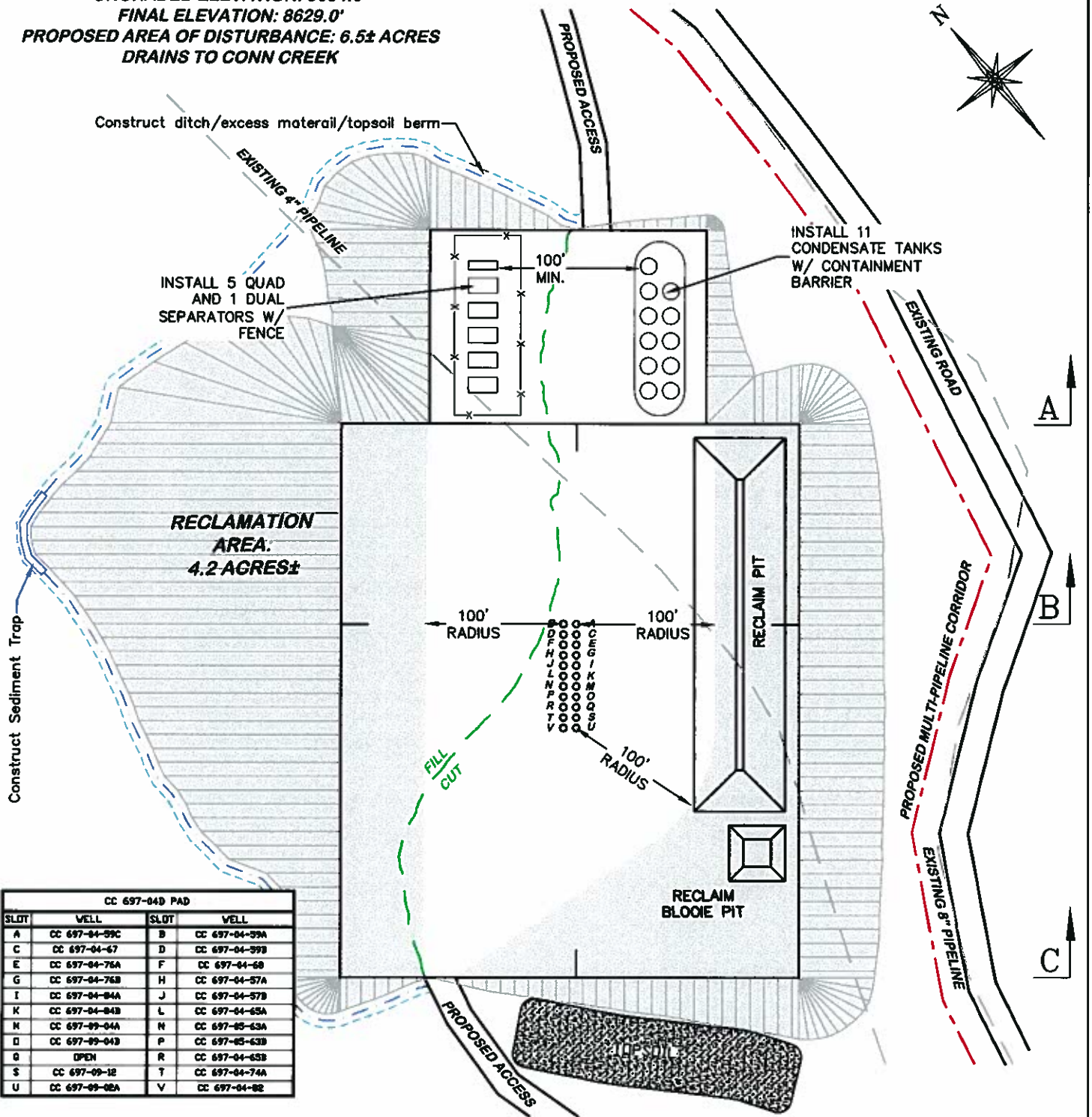
SCALE: 1" = 100'

REVISED: N/A

DRG JOB No. 18310

EXHIBIT 2B

UNGRADED ELEVATION: 8634.0'
 FINAL ELEVATION: 8629.0'
 PROPOSED AREA OF DISTURBANCE: 6.5± ACRES
 DRAINS TO CONN CREEK



CC 697-04D PAD			
SLOT	WELL	SLOT	WELL
A	CC 697-04-59C	B	CC 697-04-59A
C	CC 697-04-67	D	CC 697-04-59B
E	CC 697-04-76A	F	CC 697-04-68
G	CC 697-04-76B	H	CC 697-04-57A
I	CC 697-04-84A	J	CC 697-04-57B
K	CC 697-04-84B	L	CC 697-04-65A
M	CC 697-09-04A	N	CC 697-05-63A
O	CC 697-09-04B	P	CC 697-05-63B
Q	OPEN	R	CC 697-04-65B
S	CC 697-09-12	T	CC 697-04-74A
U	CC 697-09-02A	V	CC 697-04-82

**BEFORE DIGGING
 CALL FOR
 UTILITY LINE LOCATION**

NOTE: THE EARTH QUANTITIES ON
 THIS DRAWING ARE ESTIMATED AND
 THE USE OF SAID QUANTITIES IS AT
 THE RESPONSIBILITY OF THE USER.

RECLAMATION PLAN

CC 697-04D PAD



CONSTRUCTION LAYOUT DRAWING 4 OF 5

PROPOSED RECLAMATION

OXY USA WTP LP

CASCADE CREEK 697-04-57A, 57B, 59A, 59B,
 59C, 65A, 65B, 67, 68, 74A, 76A, 76B, 82, 84A,
 84B, 05-63A, 63B, 09-02A, 04A, 04B, 12
 NWSW SECTION 4, T. 6 S., R. 97 W., 6th P.M.,
 GARFIELD COUNTY, COLORADO



RIFFIN & ASSOCIATES, INC.

(307) 362-5028

1414 ELK ST., ROCK SPRINGS, WY 82901

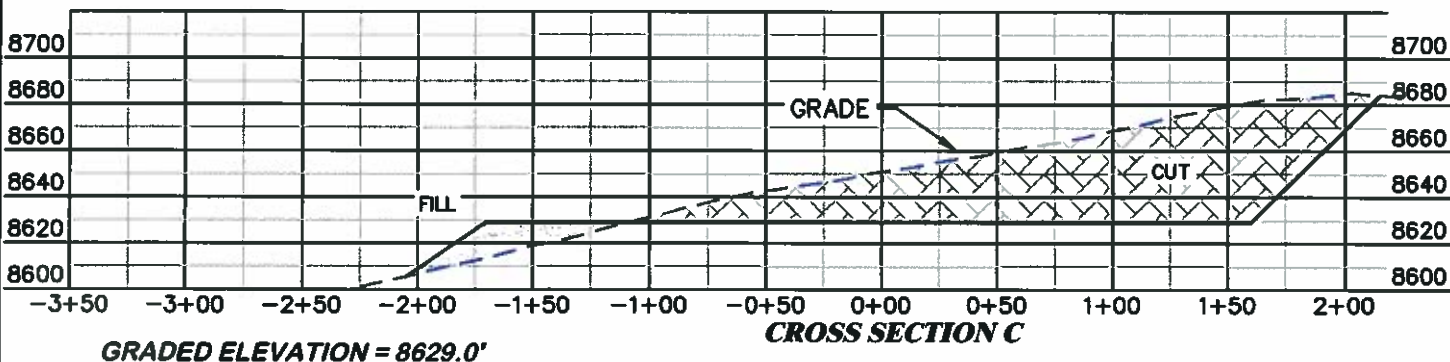
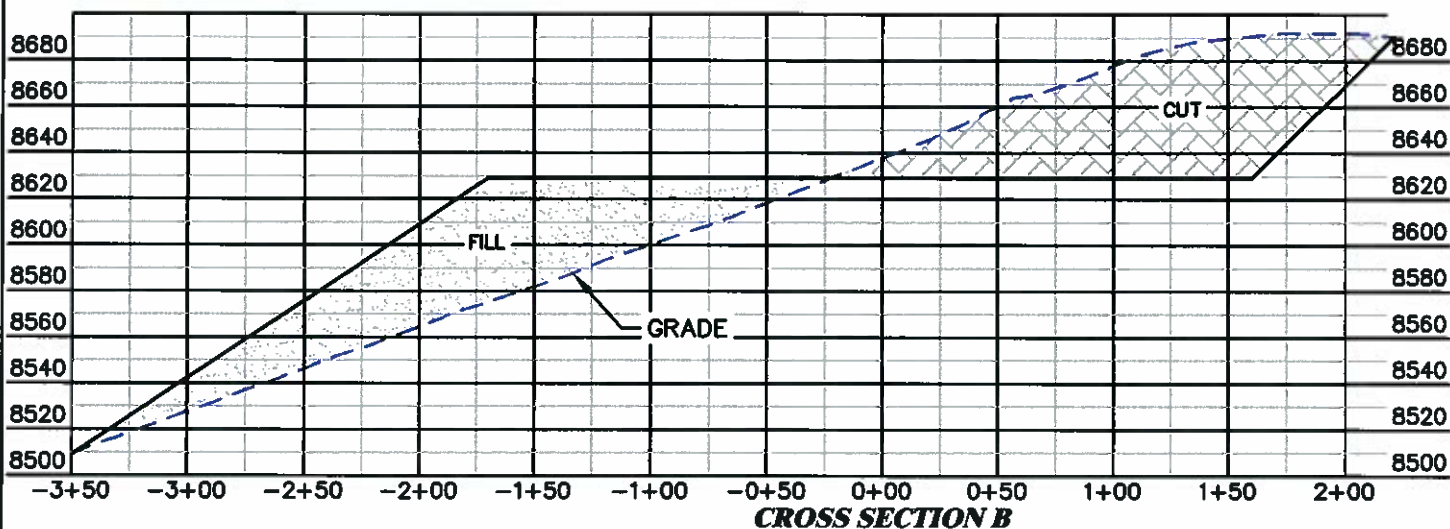
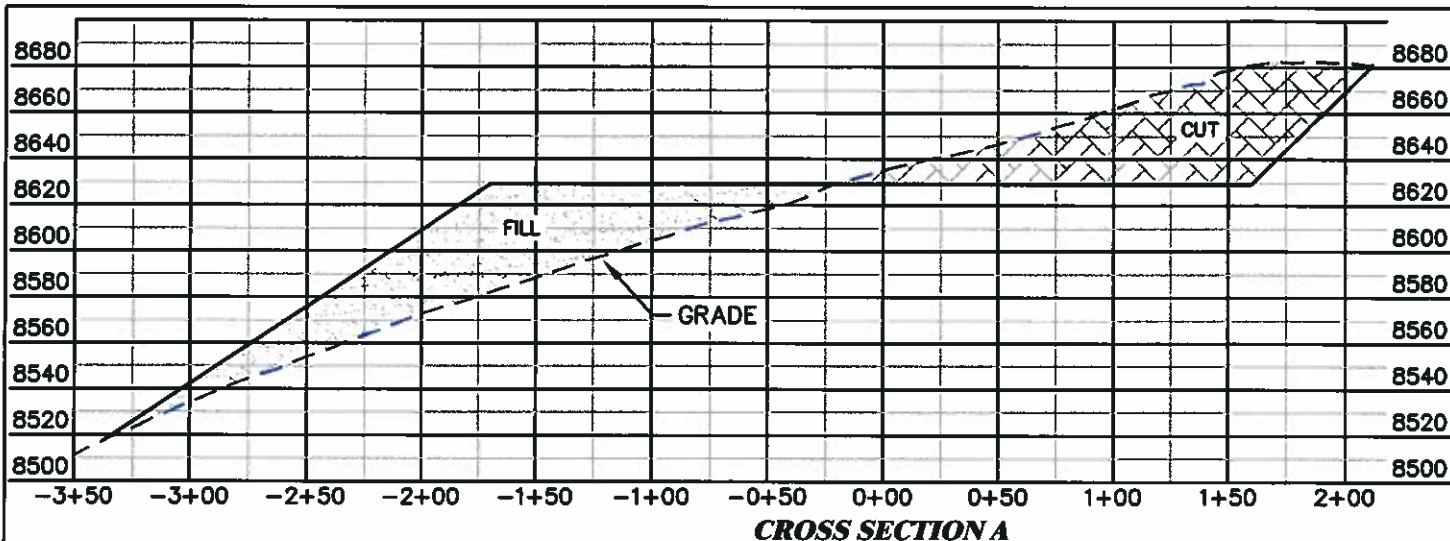
DATE: 4/13/11 - DEH

SCALE: 1" = 100'

REVISED: N/A

DRG JOB No. 18310

EXHIBIT 2C



CC 697-04D PAD



RIFFIN & ASSOCIATES, INC.
1414 ELK ST., ROCK SPRINGS, WY 82901

(307) 362-5028

DATE: 4/13/11 - DEH

HORZ. 1" = 80' VERT. 1" = 80'

REVISED: N/A

DRG JOB No. 18310

EXHIBIT 3

CONSTRUCTION LAYOUT DRAWING 5 OF 5

OXY USA WTP LP
CASCADE CREEK 697-04-57A, 57B, 59A, 59B, 59C, 65A, 65B, 67, 68, 74A, 76A, 76B, 82, 84A, 84B, 05-63A, 63B, 09-02A, 04A, 04B, 12
NWSW SECTION 4, T. 6 S., R. 97 W., 6th P.M., GARFIELD COUNTY, COLORADO