
NOBLE ENERGY INC E-BUSINESS

**DOUBLE B RANCH 18-44A
RULISON
Garfield County , Colorado**

Cement Surface Casing
10-Mar-2011

Post Job Summary

The Road to Excellence Starts with Safety

Sold To #: 345242	Ship To #: 2822540	Quote #:	Sales Order #: 8025600
Customer: NOBLE ENERGY INC E-BUSINESS		Customer Rep: Wilkerson, Kenny	
Well Name: DOUBLE B RANCH	Well #: 18-44A	API/UWI #: 05-045-18782	
Field: RULISON	City (SAP): RIFLE	County/Parish: Garfield	State: Colorado
Lat: N 39.433 deg. OR N 39 deg. 26 min. 0.312 secs.		Long: W 107.918 deg. OR W -108 deg. 4 min. 55.96 secs.	
Contractor: H&P Drilling		Rig/Platform Name/Num: H&P 322	
Job Purpose: Cement Surface Casing			
Well Type: Development Well		Job Type: Cement Surface Casing	
Sales Person: METLI, MARSHALL	Srvc Supervisor: MUHLESTEIN, RYAN	MBU ID Emp #: 453609	

Job Personnel

HES Emp Name	Exp Hrs	Emp #	HES Emp Name	Exp Hrs	Emp #	HES Emp Name	Exp Hrs	Emp #
BROWN, TRAVIS A	4	396848	JENKINS, DEMON Lashaun	4	457892	MUHLESTEIN, RYAN Herrick	4	453609
NICKLE, RYON	4	454759						

Equipment

HES Unit #	Distance-1 way	HES Unit #	Distance-1 way	HES Unit #	Distance-1 way	HES Unit #	Distance-1 way
10867531	60 mile	10951244	60 mile	10989685	60 mile	11360881	60 mile
11542767	60 mile						

Job Hours

Date	On Location Hours	Operating Hours	Date	On Location Hours	Operating Hours	Date	On Location Hours	Operating Hours
03/10/2011	4	2						

TOTAL Total is the sum of each column separately

Job

Job Times

Formation Name							Date	Time	Time Zone		
Formation Depth (MD)	Top			Bottom			Called Out	10 - Mar - 2011	06:00	MST	
Form Type				BHST				On Location	10 - Mar - 2011	12:00	MST
Job depth MD	1556.5 ft			Job Depth TVD		1556.5 ft		Job Started	10 - Mar - 2011	13:51	MST
Water Depth				Wk Ht Above Floor		4. ft		Job Completed	10 - Mar - 2011	14:45	MST
Perforation Depth (MD)	From			To			Departed Loc	10 - Mar - 2011	16:00	MST	

Well Data

Description	New / Used	Max pressure psig	Size in	ID in	Weight lbm/ft	Thread	Grade	Top MD ft	Bottom MD ft	Top TVD ft	Bottom TVD ft
OPEN HOLE SECTION				12.25				.	1567.	.	1567.
Surface Casing	Unknown		8.625	7.921	32.		J-55	.	1556.5	.	1556.5

Sales/Rental/3rd Party (HES)

Description	Qty	Qty uom	Depth	Supplier
PLUG,CMTG,TOP,8 5/8,HWE,7.20 MIN/8.09 MA	1	EA		

Tools and Accessories

Type	Size	Qty	Make	Depth	Type	Size	Qty	Make	Depth	Type	Size	Qty	Make
Guide Shoe					Packer					Top Plug			
Float Shoe					Bridge Plug					Bottom Plug			
Float Collar					Retainer					SSR plug set			
Insert Float										Plug Container			
Stage Tool										Centralizers			

Miscellaneous Materials

Gelling Agt	Conc	Surfactant	Conc	Acid Type	Qty	Conc	%
Treatment Fld	Conc	Inhibitor	Conc	Sand Type	Size		Qty

Fluid Data										
Stage/Plug #: 1										
Fluid #	Stage Type	Fluid Name	Qty	Qty uom	Mixing Density lbm/gal	Yield ft ³ /sk	Mix Fluid Gal/sk	Rate bbl/min	Total Mix Fluid Gal/sk	
1	Fresh Water Spacer		20.00	bbl	8.4	.0	.0	6.0		
2	VersaCem Lead Cement	VERSACEM (TM) SYSTEM (452010)	208.0	sacks	12.3	2.38	13.75	6.0	13.75	
13.75 Gal		FRESH WATER								
3	VersaCem Tail Cement	VERSACEM (TM) SYSTEM (452010)	118.0	sacks	12.8	2.11	11.75	6.0	11.75	
11.75 Gal		FRESH WATER								
4	Displacement		92.00	bbl	8.4	.0	.0	6.0		
Calculated Values		Pressures		Volumes						
Displacement	92.4	Shut In: Instant		Lost Returns	0	Cement Slurry	132.6	Pad		
Top Of Cement	SURFACE	5 Min		Cement Returns	10	Actual Displacement	80	Treatment		
Frac Gradient		15 Min		Spacers	20	Load and Breakdown		Total Job	233	
Rates										
Circulating	8	Mixing	6	Displacement	7	Avg. Job	7			
Cement Left In Pipe	Amount	38.9 ft	Reason	Shoe Joint						
Frac Ring # 1 @	ID	Frac ring # 2 @	ID	Frac Ring # 3 @	ID	Frac Ring # 4 @	ID			
The Information Stated Herein Is Correct				Customer Representative Signature						

The Road to Excellence Starts with Safety

Sold To #: 345242	Ship To #: 2822540	Quote #:	Sales Order #: 8025600
Customer: NOBLE ENERGY INC E-BUSINESS		Customer Rep: Wilkerson, Kenny	
Well Name: DOUBLE B RANCH	Well #: 18-44A	API/UWI #: 05-045-18782	
Field: RULISON	City (SAP): RIFLE	County/Parish: Garfield	State: Colorado
Legal Description:			
Lat: N 39.433 deg. OR N 39 deg. 26 min. 0.312 secs.		Long: W 107.918 deg. OR W -108 deg. 4 min. 55.96 secs.	
Contractor: H&P Drilling		Rig/Platform Name/Num: H&P 322	
Job Purpose: Cement Surface Casing			Ticket Amount:
Well Type: Development Well		Job Type: Cement Surface Casing	
Sales Person: METLI, MARSHALL		Srvc Supervisor: MUHLESTEIN, RYAN	MBU ID Emp #: 453609

Activity Description	Date/Time	Cht #	Rate bbl/min	Volume bbl		Pressure psig		Comments
				Stage	Total	Tubing	Casing	
Call Out	03/10/2011 06:00							
Pre-Convoy Safety Meeting	03/10/2011 10:00							WITH ALL HES PERSONNEL SAFE DRIVING PRACTICES AND TRAVEL ROUTE REVIEWED
Arrive at Location from Service Center	03/10/2011 12:00							RIG STILL RUNNING CASING
Assessment Of Location Safety Meeting	03/10/2011 12:15							WITH ALL HES PERSONNEL
Other	03/10/2011 12:20							SPOT EQUIPMENT
Pre-Rig Up Safety Meeting	03/10/2011 12:25							WITH ALL HES PERSONNEL
Rig-Up Equipment	03/10/2011 12:30							1 HT 400 PUMP, 1 660 BULK TRUCK, 1 F-450 PICK-UP, 1 CIRC. SWAGE, 2" IRON TO CELLAR
Pre-Job Safety Meeting	03/10/2011 13:00							WITH ALL HES PERSONNEL, RIG CREW AND CO REP
Start Job	03/10/2011 13:51							TD 1567', TP 1556.5', FC 1517.6', SJ 38.9', CASING 8.625" 32# J-55, 12.25" HOLE, RIG CIRC. 1 HR PRIOR TO CMT JOB, 7 BPM, 240 PSI. MUD REPORT 9.0 PPG, PV 17 YP 17
Pump Water	03/10/2011 13:51		2	2			35.0	FRESH H2O,
Test Lines	03/10/2011 13:53						3079.0	HELD PRESSURE 2 MIN NO LEAKS

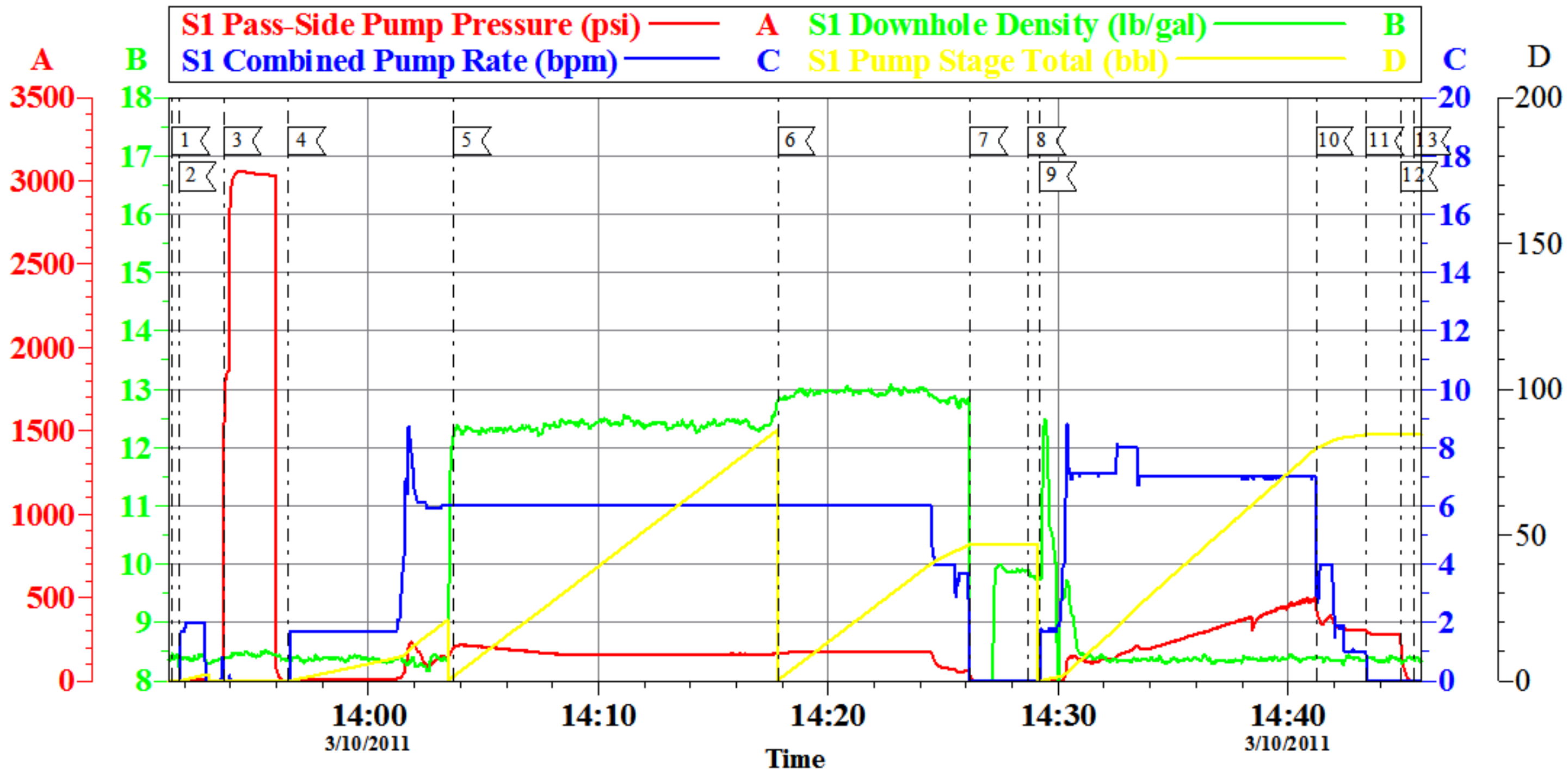
Activity Description	Date/Time	Cht #	Rate bbl/ min	Volume bbl		Pressure psig		Comments
				Stage	Total	Tubing	Casing	
Pump Spacer 1	03/10/2011 13:56		6	20			224.0	FRESH H2O
Pump Lead Cement	03/10/2011 14:03		6	88.2			194.0	208 SKS 12.3 PPG 2.38 FT3/SK 13.75 GAL/SK WEIGHED VERIFIED VIA MUD SCALES WET AND DRY SAMPLES SUBMITTED
Pump Tail Cement	03/10/2011 14:17		6	44.4			184.0	118 SKS 12.8 PPG 2.11 FT3/SK 11.75 GAL/SK WEIGHED VERIFIED VIA MUD SCALES WET AND DRY SAMPLES SUBMITTED
Shutdown	03/10/2011 14:26							WASH UP ON TOP OF PLUG
Drop Top Plug	03/10/2011 14:28							REMOVE SWAGE TO DROP PLUG
Pump Displacement	03/10/2011 14:29		6	80			480.0	CMT RETURNS 70 BBLs INTO DIS, 10 BBLs CMT TO SURFACE
Slow Rate	03/10/2011 14:41		4	75			320.0	SLOW RATE PER CO REP.
Shutdown	03/10/2011 14:43							PER CO REP REQ. SHUT DOWN 12.4 BBL PRIOR TO CALCULATED DISPLACEMENT, 203.6' CMT LEFT IN CASING
Other	03/10/2011 14:44							OPEN RELEASE, FLOATS HOLDING, GOOD RETURNS THROUGHOUT JOB
End Job	03/10/2011 14:45							CREW ON LOC AT 1230 END JOB 1445. NO ADD HRS, DERRICK CHARGE, PLUG CONTAINER, QUICK LATCH. RIG USED 40 LBS SUGAR.
Pre-Rig Down Safety Meeting	03/10/2011 14:50							WITH ALL HES PERSONNEL
Rig-Down Equipment	03/10/2011 15:15							
Pre-Convoy Safety Meeting	03/10/2011 15:45							WITH ALL HES PERSONNEL

Activity Description	Date/Time	Cht #	Rate bbl/ min	Volume bbl		Pressure psig		Comments
				Stage	Total	Tubing	Casing	
Crew Leave Location	03/10/2011 16:00							THANK YOU FOR USING HALLIBURTON CEMENT DEPARTMENT. RYAN MUHLESTEIN AND CREW

NOBLE

DOUBLE B RANCH 18-44A

8 5/8" SURFACE CASING



Local Event Log

1	START JOB	13:51:29	2	FILL LINES	13:51:44	3	TEST LINES	13:53:43
4	PUMP H2O SPACER	13:56:31	5	PUMP LEAD CMT	14:03:42	6	PUMP TAIL CMT	14:17:49
7	SHUT DOWN	14:26:10	8	DROP PLUG	14:28:42	9	PUMP DISPLACEMENT	14:29:10
10	SLOW RATE	14:41:13	11	SHUT DOWN	14:43:25	12	CHECK FLOATS	14:44:55
13	END JOB	14:45:29						

Customer: NOBLE
Well Description: DOUBLE B RANCH 18-44A
Customer Rep: K. WILKERSON

Job Date: 10-Mar-2011
Job type: SURFACE
Service Supervisor: RYAN MUHLESTEIN

Sales Order #: 8025600
ADC Used: YES
Operator/ Pump: RYON NICKLE/ ELITE 1

OptiCem v6.4.6
10-Mar-11 14:55