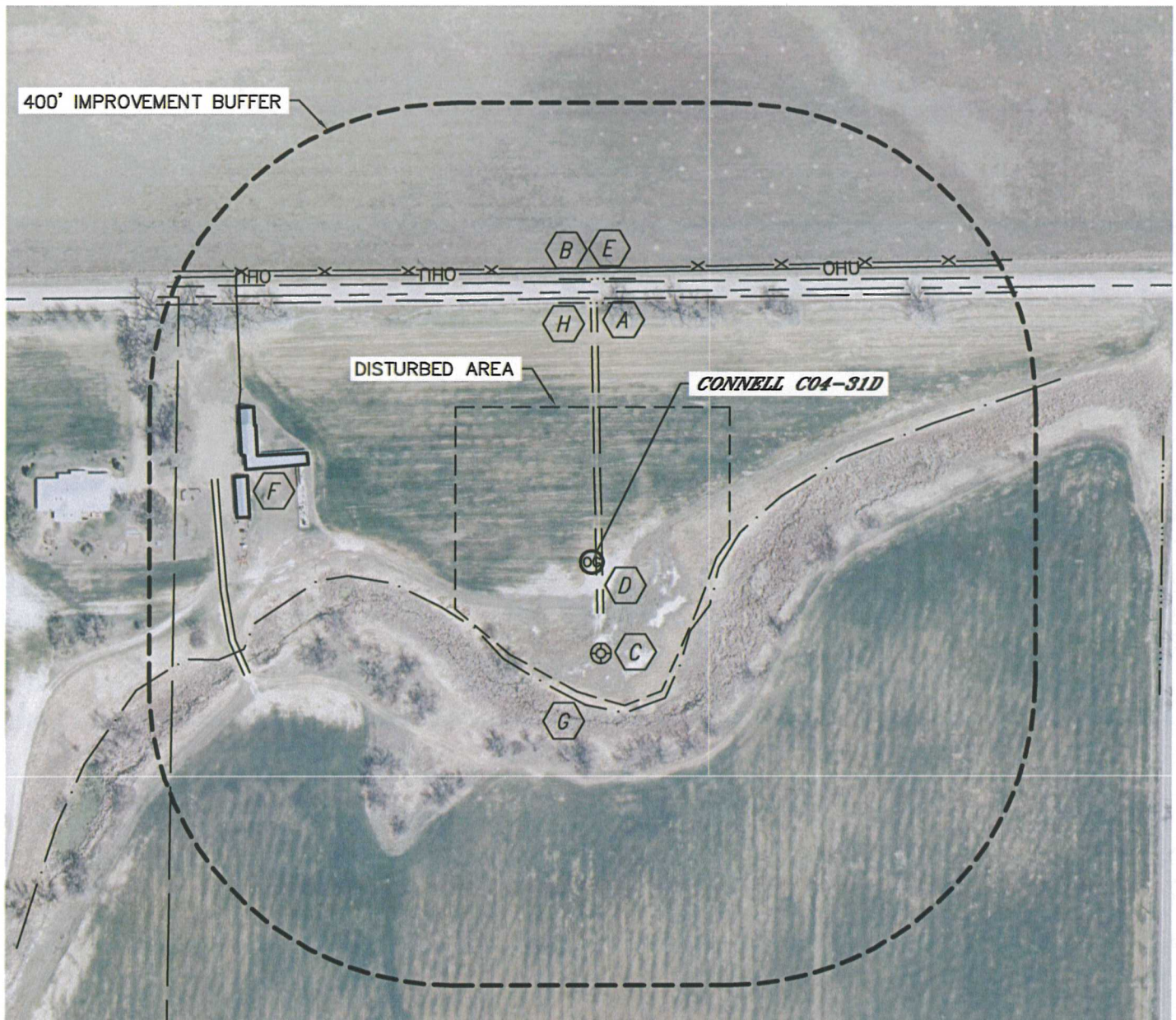


## LOCATION DRAWING

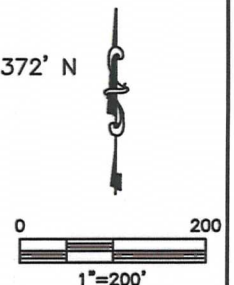
CONNELL C04-31D

SECTION: 5  
TOWNSHIP: 4N  
RANGE: 64W



### IMPROVEMENTS:

- |          |                                  |          |                             |
|----------|----------------------------------|----------|-----------------------------|
| <b>A</b> | COUNTY ROAD 50 346' N            | <b>F</b> | BUILDING 392' NW, 451' NW   |
| <b>B</b> | OVERHEAD UTILITY 381' N, 498' NW | <b>G</b> | DITCH 168' SW, 158' SE      |
| <b>C</b> | EX. KUIS C5-1 120' S             | <b>H</b> | BARROW DITCH 340' N, 372' N |
| <b>D</b> | FIELD ROAD 6' E, 475' W          |          |                             |
| <b>E</b> | FENCE 386' N                     |          |                             |



NEAREST: BUILDING 392' NW, PUBLIC ROAD (CR 50) 346' N,  
ABOVE GROUND UTILITY 381' N, RAILROAD 5280'+, PROPERTY LINE 355' N