

EOG RESOURCES, INC.

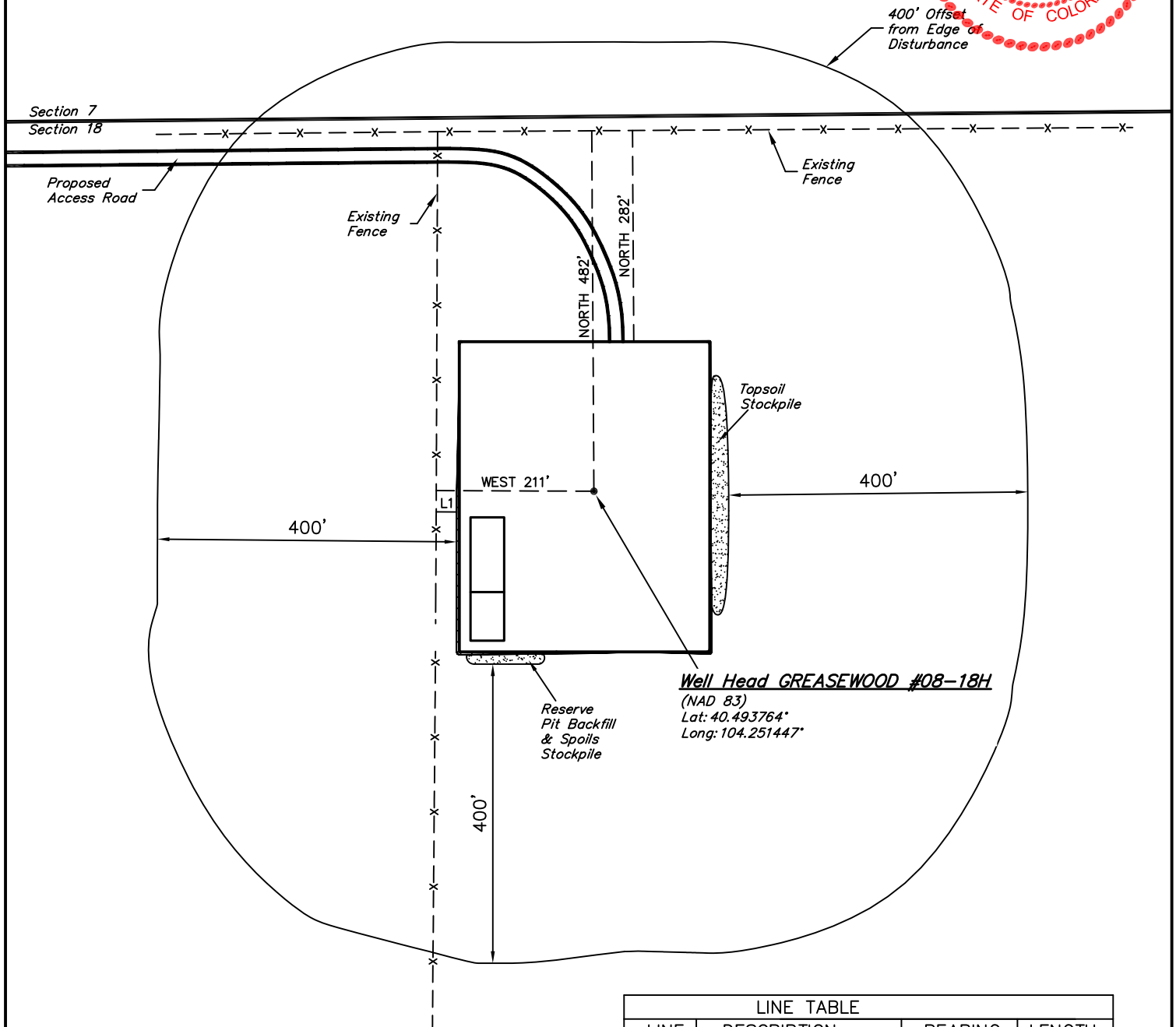
ADDENDUM TO LEGAL PLAT FOR

GREASEWOOD #08-18H
SECTION 18, T6N, R61W, 6th P.M.
501' FNL 2413' FEL

SCALE: 1" = 200'

DATE: 02-25-11

DRAWN BY: K.O.



LINE TABLE			
LINE	DESCRIPTION	BEARING	LENGTH
L1	To Fence	WEST	27'

EOG RESOURCES, INC.

CONSTRUCTION LAYOUT FOR

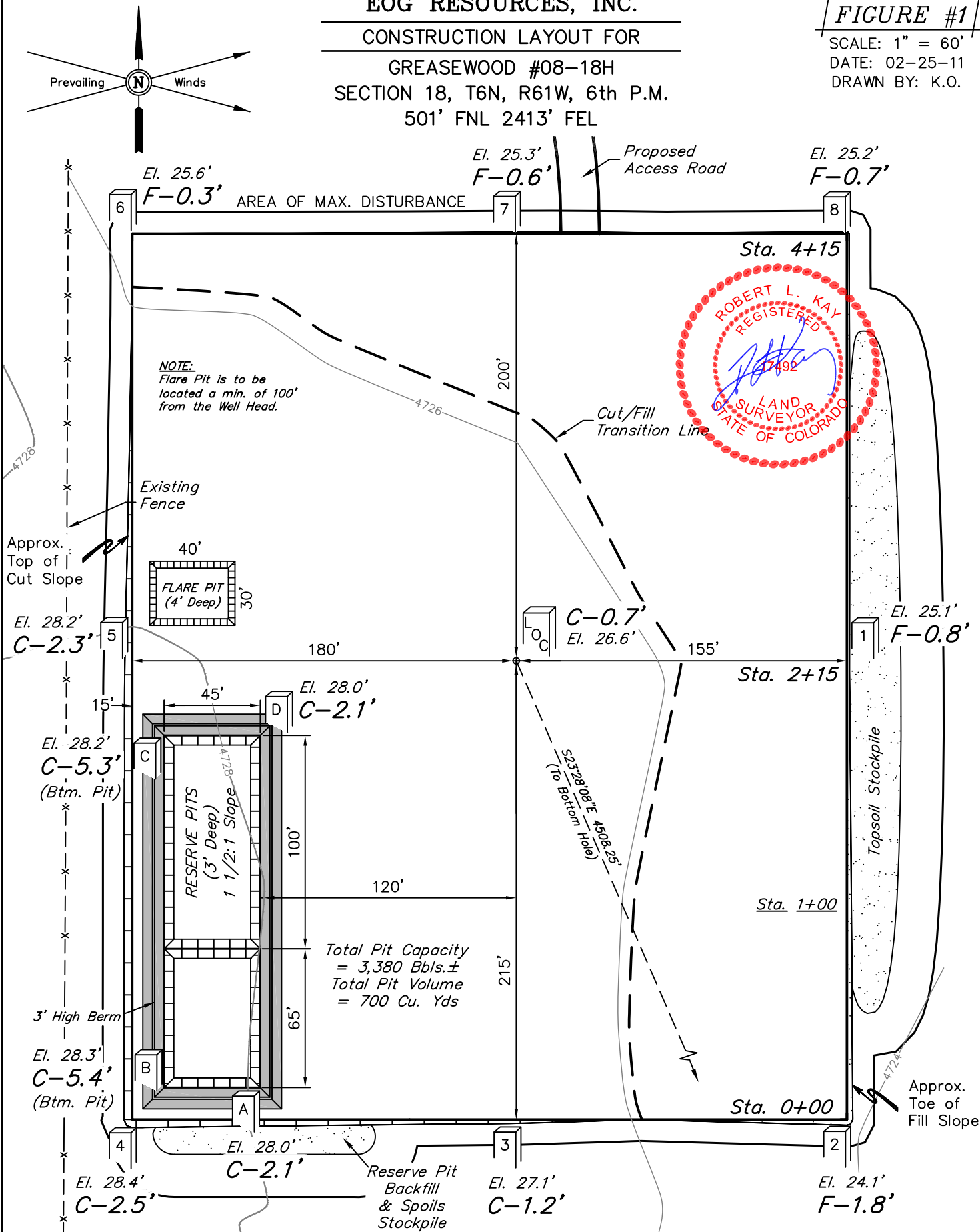
GREASEWOOD #08-18H
SECTION 18, T6N, R61W, 6th P.M.
501' FNL 2413' FEL

FIGURE #1

SCALE: 1" = 60'

DATE: 02-25-11

DRAWN BY: K.O.



UINTAH ENGINEERING & LAND SURVEYING

85 So. 200 East * Vernal, Utah 84078 * (435) 789-1017

EOG RESOURCES, INC.

CONSTRUCTION LAYOUT CROSS SECTIONS FOR

GREASEWOOD #08-18H

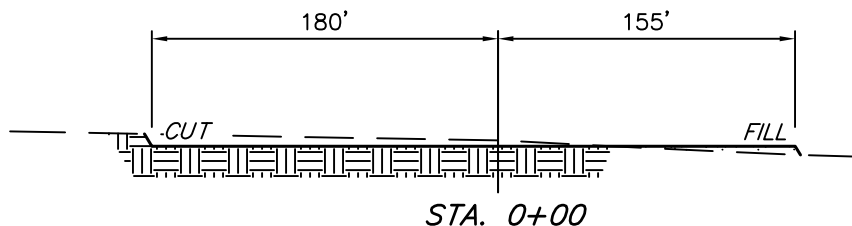
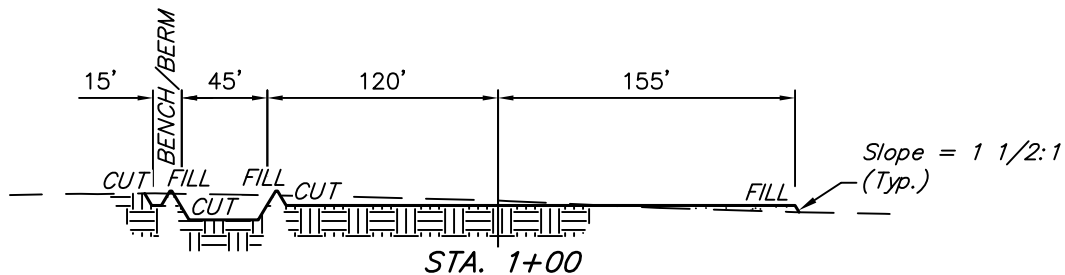
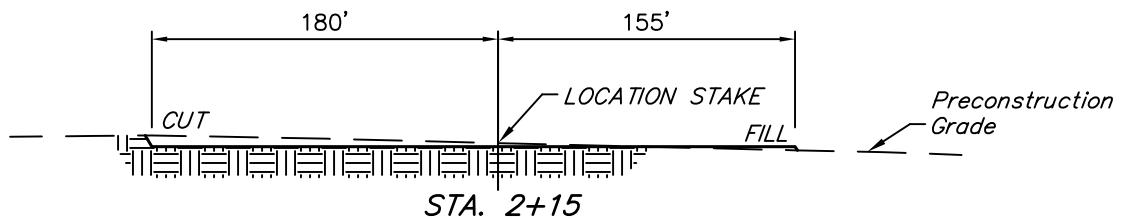
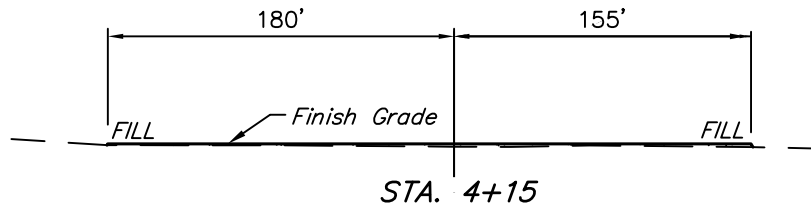
SECTION 18, T6N, R61W, 6th P.M.

501' FNL 2413' FEL

FIGURE #2

1" = 40'
X-Section
Scale
1" = 100'

DATE: 02-25-11
DRAWN BY: K.O.



NOTE:

Topsoil should not be Stripped Below Finished Grade on Substructure Area.

APPROXIMATE ACREAGES

WELL SITE DISTURBANCE = ± 3.923 ACRES
ACCESS ROAD DISTURBANCE = ± 2.009 ACRES
TOTAL = ± 5.932 ACRES

* NOTE:
FILL QUANTITY INCLUDES 5% FOR COMPACTION

APPROXIMATE YARDAGES

(6") Topsoil Stripping = 2,660 Cu. Yds.
Remaining Location = 2,800 Cu. Yds.
TOTAL CUT = 5,460 CU.YDS.
FILL = 2,450 CU.YDS.

EXCESS MATERIAL = 3,010 Cu. Yds.
Topsoil & Pit Backfill = 3,010 Cu. Yds.
(1/2 Pit Vol.)
EXCESS UNBALANCE = 0 Cu. Yds.
(After Interim Rehabilitation)

UINTAH ENGINEERING & LAND SURVEYING
85 So. 200 East * Vernal, Utah 84078 * (435) 789-1017

EOG RESOURCES, INC.

TYPICAL RIG LAYOUT FOR

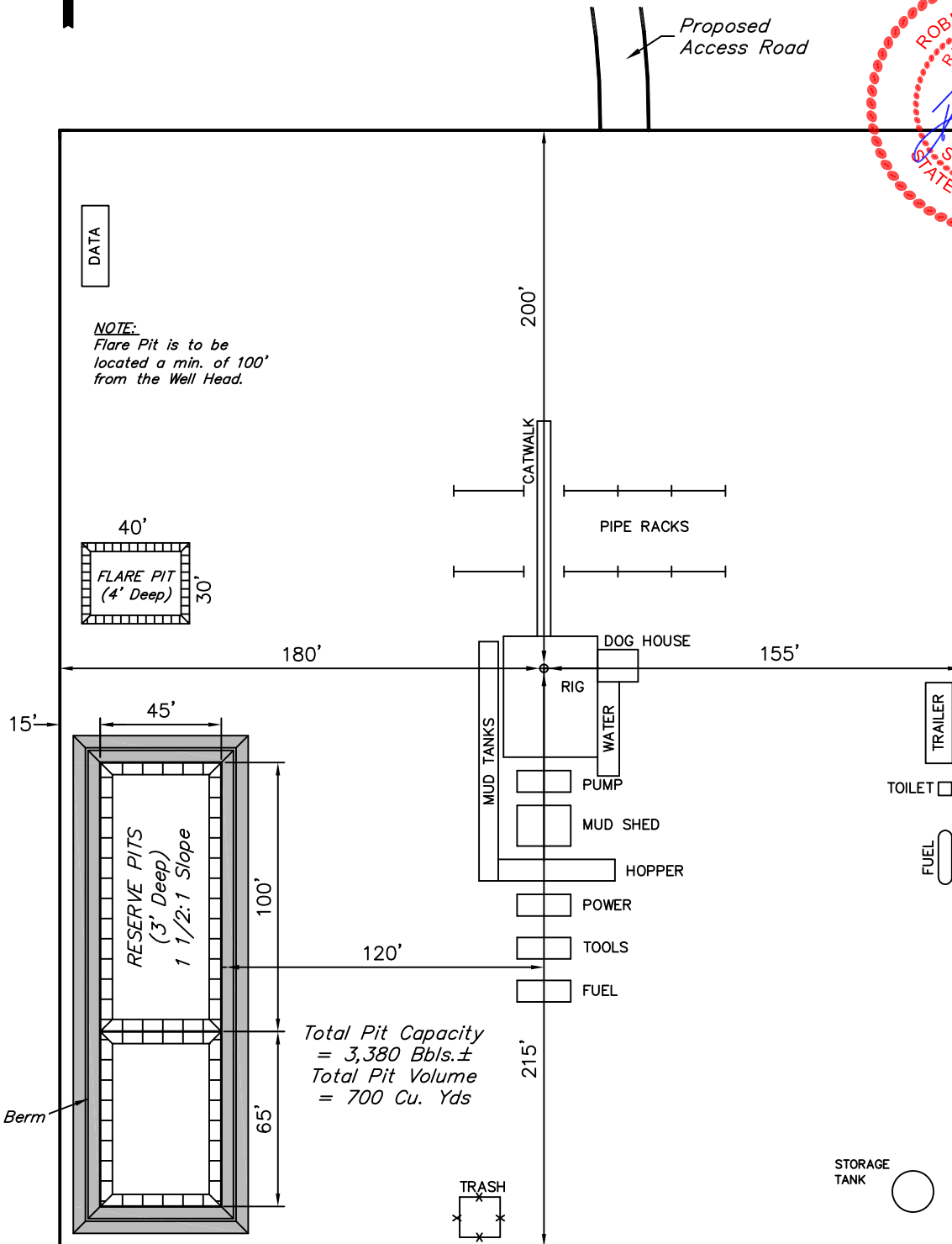
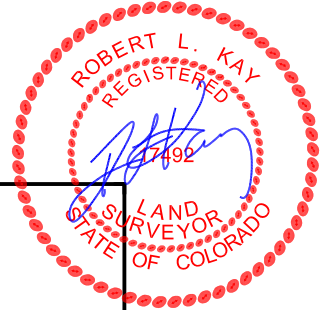
GREASEWOOD #08-18H
SECTION 18, T6N, R61W, 6th P.M.
501' FNL 2413' FEL

FIGURE #3

SCALE: 1" = 60'

DATE: 02-25-11

DRAWN BY: K.O.



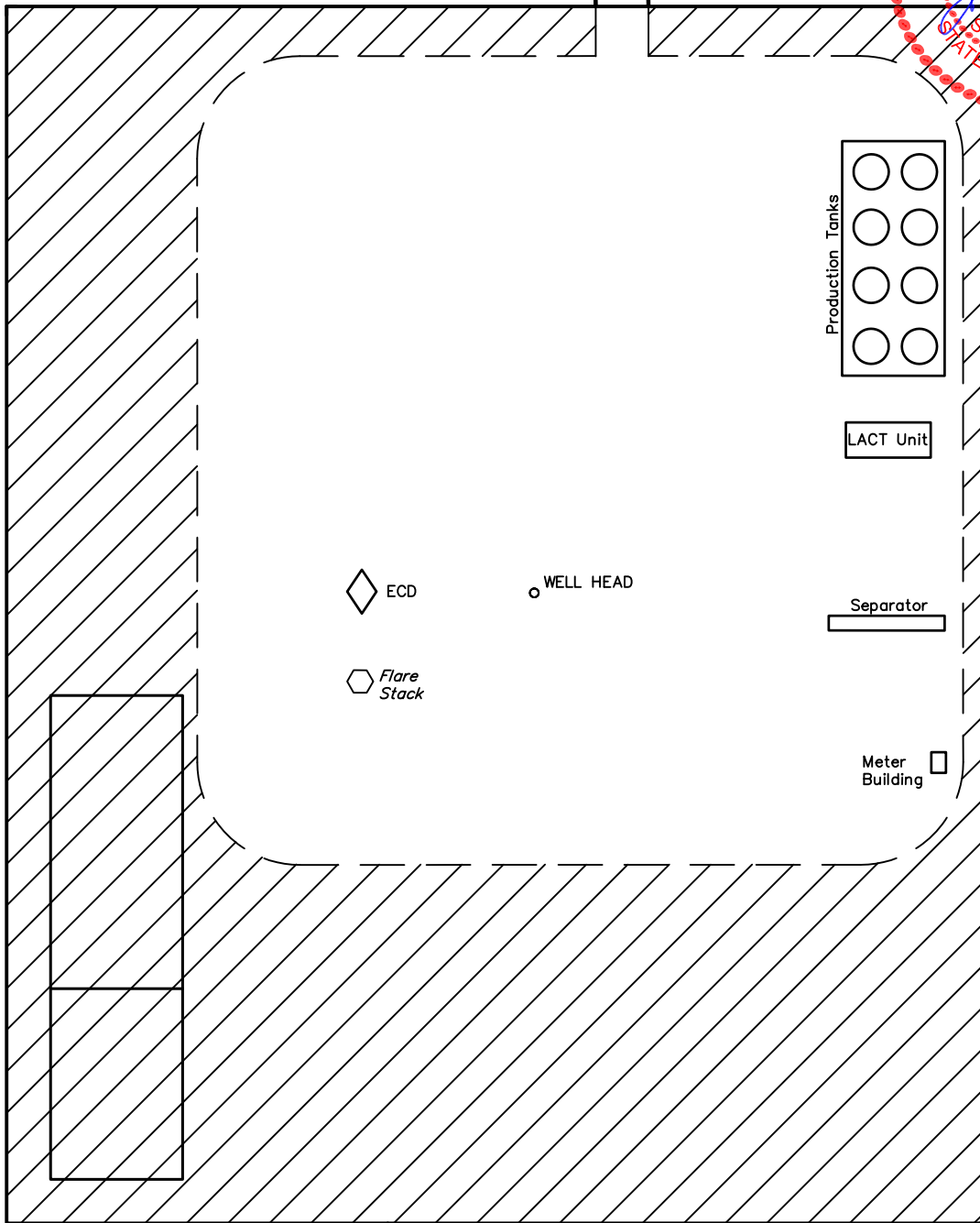
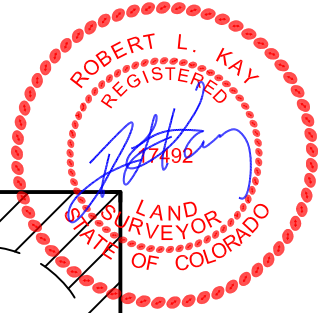
EOG RESOURCES, INC.
RECLAMATION DIAGRAM FOR
GREASEWOOD #08-18H
SECTION 18, T6N, R61W, 6th P.M.
501' FNL 2413' FEL

FIGURE #4

SCALE: 1" = 60'
DATE: 02-25-11
DRAWN BY: K.O.



Access Road



APPROXIMATE ACREAGES
UN-RECLAIMED = ± 1.554 ACRES



RECLAIMED AREA

EOG RESOURCES, INC.

LOCATION DRAWING FOR

GREASEWOOD #08-18H
SECTION 18, T6N, R61W, 6th P.M.
501' FNL 2413' FEL

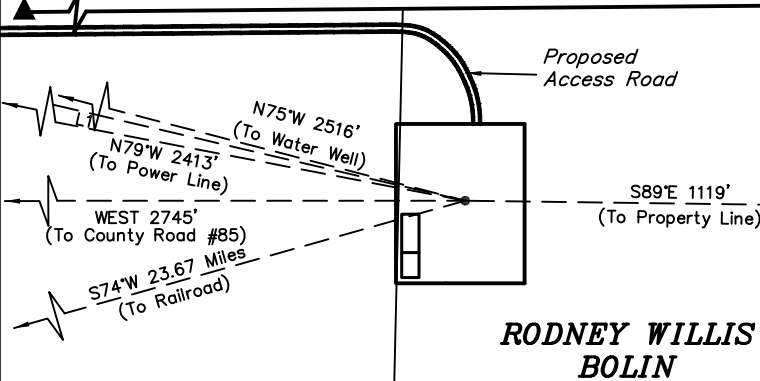
FIGURE #5

NW Cor. Sec. 18
1997 Alum. Cap,
0.5' Below Ground
PLS 7242
Lat: 40.495075°
Long: 104.261292°

N89°30'33"E - 5154.13' (Meas.)

Section Line

2006 Private Alum. Cap,
Flush With Ground
PLS 20701
Lat: 40.495194°
Long: 104.242767°



NE 1/4

1/16 Section Line

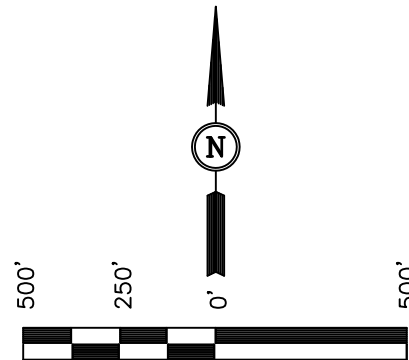
LINE TABLE			
LINE	DESCRIPTION	BEARING	LENGTH
L1	To Building	N77°W	2637'

1/4 Section Line

18

1/4 Section Line

1/16 Section Line



SCALE
DATE: 02-25-11
DRAWN BY: K.O.

S00°14'16"W - 5252.35' (Meas.)

SE Cor. Sec. 18
2007 Private Alum. Cap,
0.6' Below Ground
PLS 28285
Lat: 40.480781°
Long: 104.242850°

PLANT COMMUNITY

- ☐ DISTURBED GRASSLAND
- ☐ NATIVE GRASSLAND
- ☐ SHRUB LAND
- ☐ PLAINS RIPARIAN
- ☐ MOUNTAIN RIPARIAN
- ☐ FOREST LAND
- ☐ WETLANDS AQUATIC
- ☐ ALPINE
- ☐ OTHER (Describe): _____

CURRENT LAND USE

- CROP LAND: ☐ IRRIGATED ☐ DRY LAND ☐ IMPROVED PASTURE ☐ HAY MEADOW ☐ CRP
- NON-CROP LAND: ☐ RANGELAND ☐ TIMBER ☐ RECREATIONAL ☐ OTHER (Describe) _____
- SUBDIVIDED: ☐ INDUSTRIAL ☐ COMMERCIAL ☐ RESIDENTIAL _____

FUTURE LAND USE

- CROP LAND: ☐ IRRIGATED ☐ DRY LAND ☐ IMPROVED PASTURE ☐ HAY MEADOW ☐ CRP
- NON-CROP LAND: ☐ RANGELAND ☐ TIMBER ☐ RECREATIONAL ☐ OTHER (Describe) _____
- SUBDIVIDED: ☐ INDUSTRIAL ☐ COMMERCIAL ☐ RESIDENTIAL _____