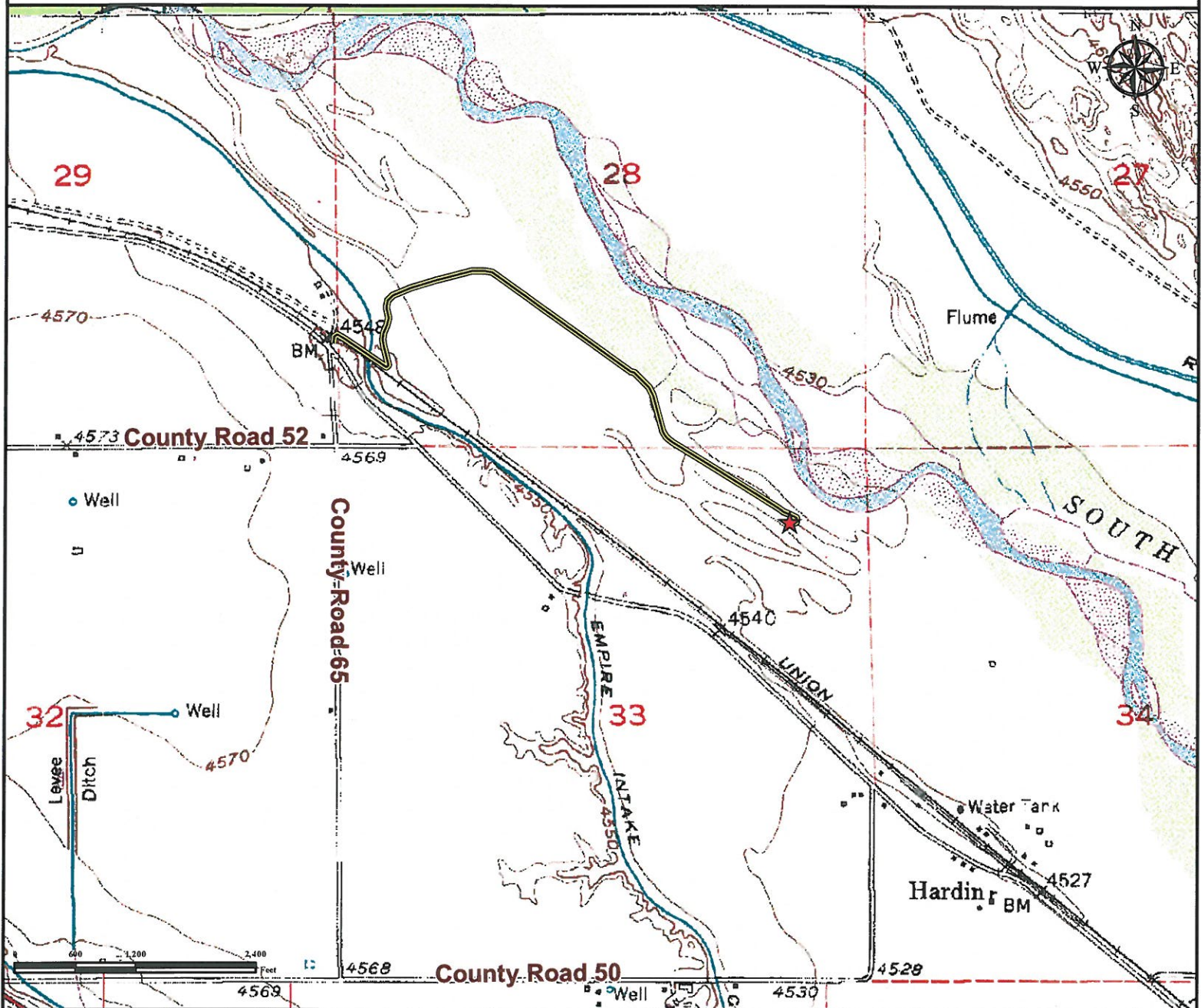


Access Road Map

NORTH PLATTE 44-11-28HZ

Facility

NE¼ NE¼ SECTION 33, TOWNSHIP 5 NORTH, RANGE 63 WEST OF THE 6TH PRINCIPAL MERIDIAN



From Kersey, CO: Beginning at the intersection of 1st Street/County Road 53 and County Road 56, Drive South on 1st Street/County Road 53 3.0 Miles to County Road 50.

Turn Left on County Road 50 and drive East 6.0 miles to County Road 65.

Turn Left onto County Road 65 and drive North 1.2 miles to proposed access road.

Turn Right on proposed access road and follow 0.13 miles Southeast. Continue to follow road 0.14 miles North. Road curves, follow 0.19 miles Northeast. Follow access road 0.76 miles Southeast to the proposed facility location.

Total distance from Kersey, CO to facility location is **11.42 Miles**.

Legend



Proposed Facility



Access Road

Reference Location

** All Measurements are Made from

★ Reference Point **

LAT: 40.361094° LONG: -104.434362° (NAD83)
Elevation: 4533 Feet



Use our resources to find yours!

www.petro-fs.com

(303) 928-7128

Field Date: 04/14/2011
Drafting Date: 04/18/2011
Drafter: KLM
Checked By: BHF

Data Sources:
- Topo courtesy of USGS

Prepared for:

BONANZA CREEK
ENERGY OPERATING CO., LLC