

GENTRY 6X **Current Wellbore**

03/28/11

Rangely Weber Sand Unit

Well Details:	
STATE & CO	CO - Rio Blanco
TWNS & RNG	T1N & R102W
SECTION	(SENE) 3
API	05-103-0744200
CHEVNO	DG4682

Casing Details:		P&A: GEN6X - CS47	
Type	Depth		
KB	5202		
GL	5188		
10.75 in. 40.5 #/ft, K-55	0 - 790', 525 sxs cmt		
7 in. 23 #/ft, K-55	0 - 5500', sxs cmt		
7 in. 23 #/ft, N-80	5500 - 6352', 700		
Top Perf	5698		
Btm Perf	6300		
PBTD:	6340		
TD:	6352		

Formation	Depth
Niobrara	2040
Frontier	2874
Frontier Snd	2969
Mowry	3140
Dakota	3245
Morrison	0
Curtis	3965
Entrada	4080
Carmel	4220
Navajo	4270
Chinle	4840
Shinarump	4980
Moenkopi	5050
Weber	5683

COGCC Regulations: Set Isolation Packer
within 300' of perfs or 100' above liner

GOC_CALC	5532	
		FT
Weber 1a	5683	158
Weber 2	5841	
Weber 3a	5846	454
Weber 4	5933	
Weber 5a	5967	
Weber 6	6065	
Weber 7a	6083	
Weber 8	6184	
Weber 9a	6208	
Weber 10	6305	
Weber 11a	6327	
		612
OWC_CALC	6302	

KB 5202
GL 5188

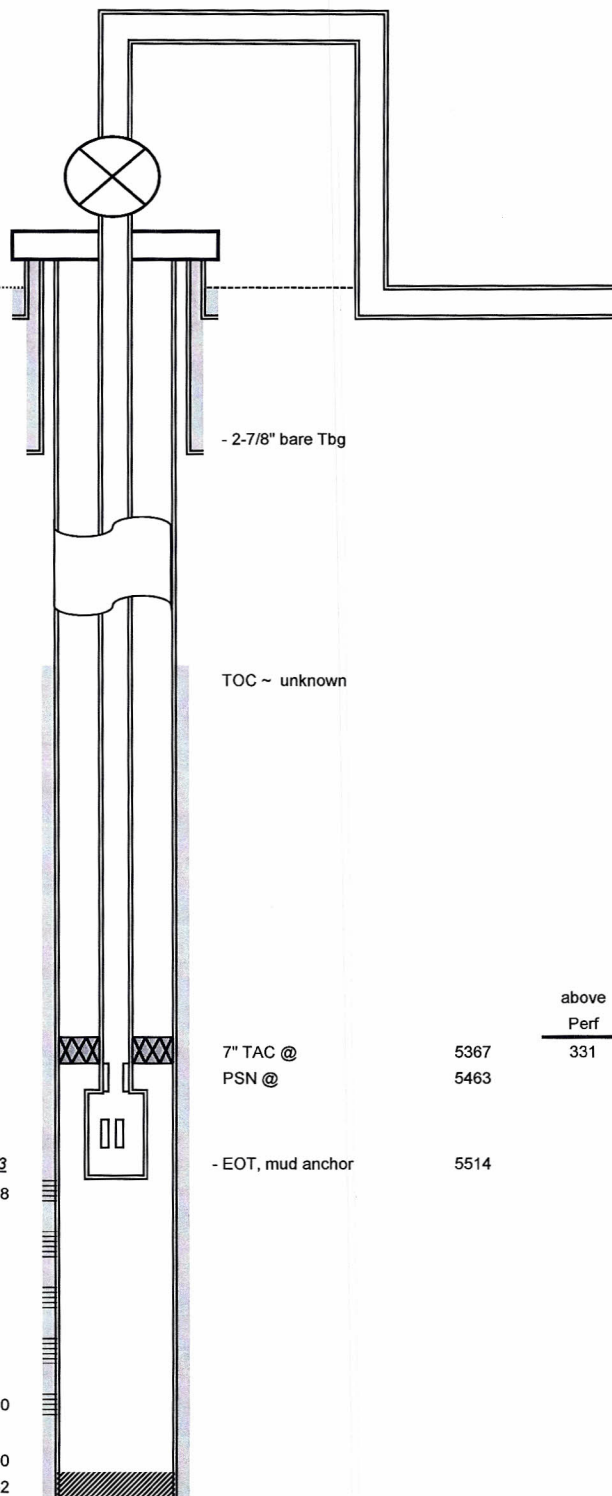
10.75 in. 40.5 #/ft, K-55
0 - 790', 525 sxs cmt

7 in. 23 #/ft, K-55
0 - 5500', sxs cmt

7 in. 23 #/ft, N-80
5500 - 6352', 700

Weber 5683
Top Perf 5698

Btm Perf 6300
PBTD: 6340
TD: 6352



- 2-7/8" bare Tbg

TOC ~ unknown

7" TAC @ 5367
PSN @ 5463

- EOT, mud anchor 5514

above
Perf
331

Notes:

- 1-
- 2-
- 3-

Rangely Weber Sand Unit

GENTRY 6X Plugged and Abandoned Wellbore

03/28/11

Well Details:	
STATE & CO	CO - Rio Blanco
TWNS & RNG	T1N & R102W
SECTION	(SENE) 3
API	05-103-0744200
CHEVNO	DG4682

Casing Details:		P&A: GEN6X - CS47	
Type	Depth		
KB	5202		
GL	5188		
10.75 in. 40.5 #/ft, K-55	0 - 790', 525 sxs cmt		
7 in. 23 #/ft, K-55	0 - 5500', sxs cmt		
7 in. 23 #/ft, N-80	5500 - 6352', 700		
in. #/ft,	-', sxs cmt		
in. #/ft,	-', sxs cmt		
in. #/ft,	-', sxs cmt		
Top Perf	5698		
Btm Perf	6300		
PBTD:	6340		
TD:	6352		

Formation	Depth
Niobrara	2040
Frontier	2874
Frontier Snd	2969
Mowry	3140
Dakota	3245
Morrison	0
Curtis	3965
Entrada	4080
Carmel	4220
Navajo	4270
Chinle	4840
Shinarump	4980
Moenkopi	5050
Weber	5683

GOC_CALC	5532
----------	------

Weber 1a	5683
Weber 2	5841
Weber 3a	5846
Weber 4	5933
Weber 5a	5967
Weber 6	6065
Weber 7a	6083
Weber 8	6184
Weber 9a	6208
Weber 10	6305
Weber 11a	6327

OWC_CALC	6302
----------	------

KB 5202
GL 5188

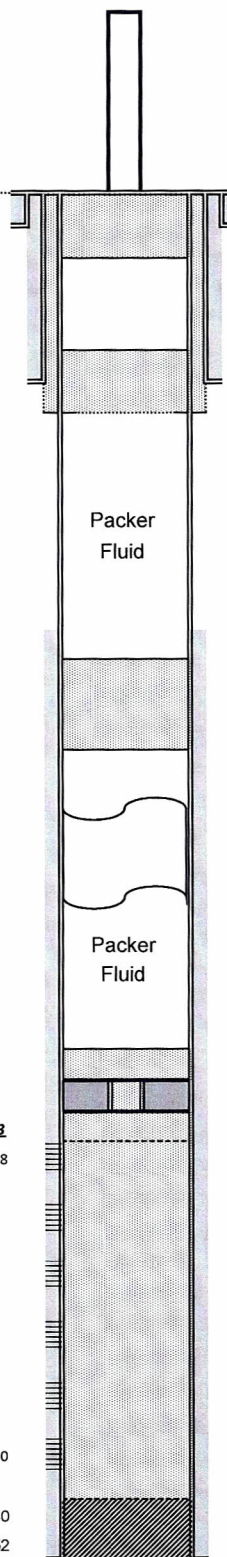
10.75 in. 40.5 #/ft, K-55
0 - 790', 525 sxs cmt

7 in. 23 #/ft, K-55
0 - 5500', sxs cmt

7 in. 23 #/ft, N-80
5500 - 6352', 700

Weber 5683
Top Perf 5698

Btm Perf 6300
PBTD: 6340
TD: 6352



Cement Plug	Depths	BBIs	Sxs
Surface Plug	0 - 250'	10	48
Shoe & Annular Plugs			
7", 23#/ft	740 - 840'	4	19
10 3/4" 40.5 #/ft x 7"	740 - 840'	5	24
Determine TOC w/ CBL			
Intermediate Plug			
7", 23#/ft	2699 - 2949'	10	48
above CICR	5598 - 5648'	2	10
7" CICR @	5648		
Minimum Weber Plug	5698 - 5748'	3	15
Full Plug to PBTD	5648 - 6340'	6	30
Total Cement		BBIs	Sxs
Minimum Weber Plug	10%/1000'	24	115
Full Plug to PBTD	10%/1000'	37	130

Notes:

- 1-
- 2-