

# OLDLAND ERNEST 6X Current Wellbore

03/28/11

## Rangely Weber Sand Unit

Well Details:	
STATE & CO	CO - Rio Blanco
TWNS & RNG	T2N & R102W
SECTION	(SE SE) 36
API	05-103-0947600
CHEVNO	KU4513

Casing Details:		P&A: OLD6X - CS39	
Type	Depth		
KB	5240		
GL	5219		
16 in. #/ft, 0.75"	0 - 58', 2 yds. sxs cmt		
8.625 in. 24 #/ft, UNKNOWN	0 - 775', 300 sxs cmt		
5.5 in. 17 #/ft, K-55	0 - 5962', 1250		
in. #/ft,	-', sxs cmt		
in. #/ft,	-', sxs cmt		
Open Hole Top	5962		
Open Hole Btm	6500		
PBTD:	6500		
TD:	6500		

Formation	Depth
Niobrara	2230
Frontier	3098
Frontier Snd	3184
Mowry	3369
Dakota	3463
Morrison	3542
Curtis	4151
Entrada	4236
Carmel	4418
Navajo	4469
Chinle	5078
Shinarump	5239
Moenkopi	5325
Weber	5971

COGCC Regulations: Set Isolation Packer  
within 300' of perfs or 100' above liner

GOC_CALC	5570	
		FT
Weber 1a	5971	188
Weber 2	6159	
Weber 3a	6165	335
Weber 4	6243	
Weber 5a	6266	
Weber 6	6376	
Weber 7a	6385	
Weber 8		
Weber 9a		
Weber 10		
Weber 11a		
		523
OWC_CALC	6390	

KB 5240  
GL 5219  
16 in. #/ft, 0.75"  
0 - 58', 2 yds. sxs cmt

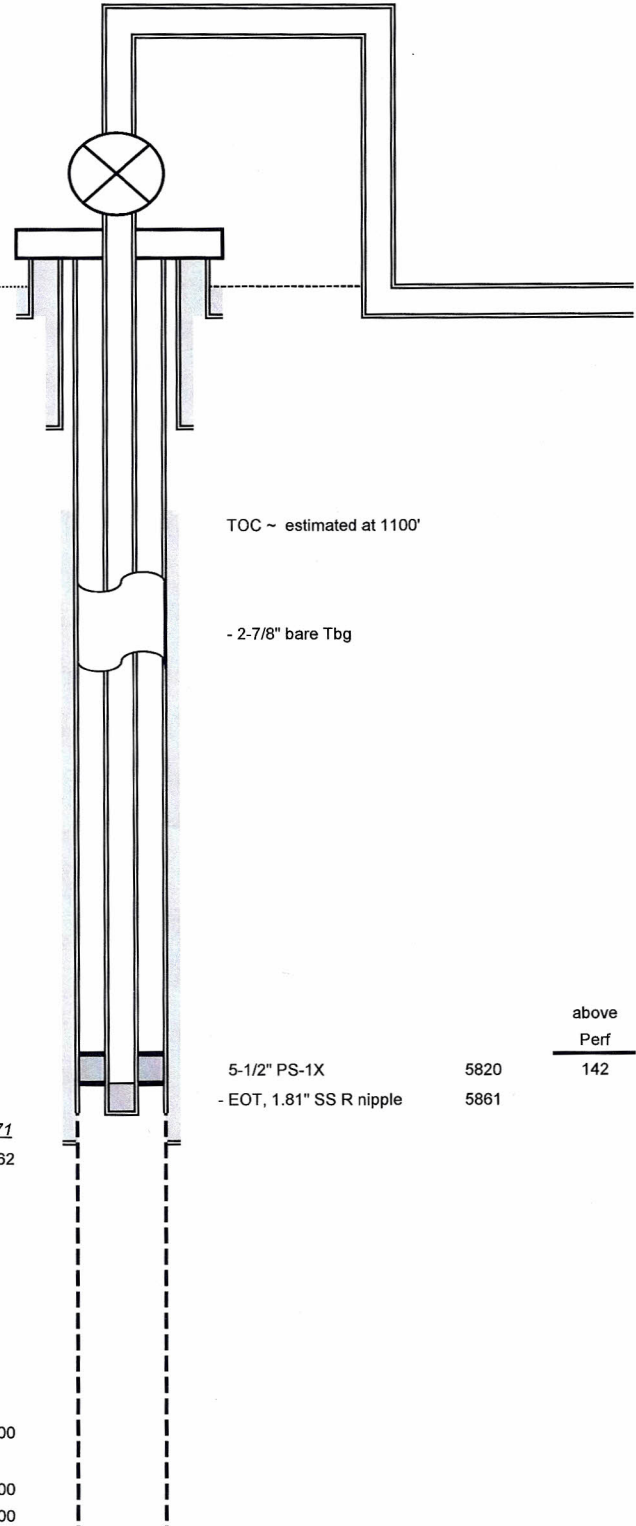
8.625 in. 24 #/ft, UNKNOWN  
0 - 775', 300 sxs cmt

5.5 in. 17 #/ft, K-55  
0 - 5962', 1250

Weber 5971  
Open Hole Top 5962

Open Hole Btm 6500

PBTD: 6500  
TD: 6500



### Notes:

1- 10/08: PLS set 1.81" RZG plug at 5680'

2-

3-

# Rangely Weber Sand Unit

# OLDLAND ERNEST 6X Plugged and Abandoned Wellbore

03/28/11

Well Details:	
STATE & CO	CO - Rio Blanco
TWNS & RNG	T2N & R102W
SECTION	(SE SE) 36
API	05-103-0947600
CHEVNO	KU4513

Casing Details:	P&A: OLD6X - CS39
Type	Depth
KB	5240
GL	5219
16 in. #/ft, 0.75"	0 - 58', 2 yds. sxs cmt
8.625 in. 24 #/ft, UNKNOWN	0 - 775', 300 sxs cmt
5.5 in. 17 #/ft, K-55	0 - 5962', 1250
in. #/ft,	-', sxs cmt
in. #/ft,	-', sxs cmt
in. #/ft,	-', sxs cmt
Open Hole Top	5962
Open Hole Btm	6500
PBTD:	6500
TD:	6500

Formation	Depth
Niobrara	2230
Frontier	3098
Frontier Snd	3184
Mowry	3369
Dakota	3463
Morrison	3542
Curtis	4151
Entrada	4236
Carmel	4418
Navajo	4469
Chinle	5078
Shinarump	5239
Moenkopi	5325
Weber	5971

GOC_CALC	5570
----------	------

Weber 1a	5971
Weber 2	6159
Weber 3a	6165
Weber 4	6243
Weber 5a	6266
Weber 6	6376
Weber 7a	6385
Weber 8	
Weber 9a	
Weber 10	
Weber 11a	

OWC_CALC	6390
----------	------

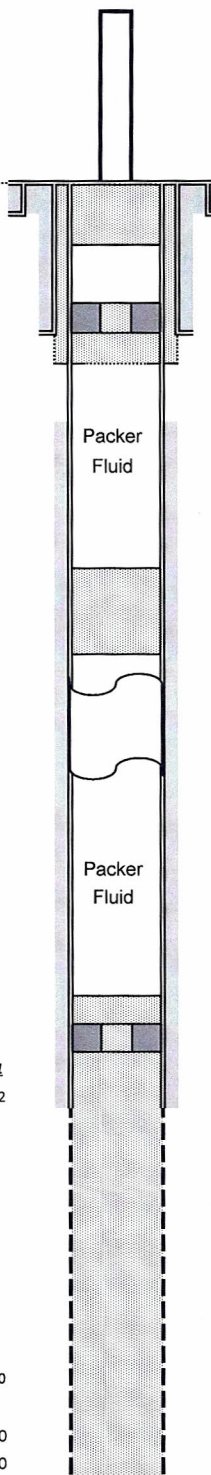
KB 5240  
GL 5219  
16 in. #/ft, 0.75"  
0 - 58', 2 yds. sxs cmt

8.625 in. 24 #/ft, UNKNOWN  
0 - 775', 300 sxs cmt

5.5 in. 17 #/ft, K-55  
0 - 5962', 1250

Weber 5971  
Open Hole Top 5962

Open Hole Btm 6500  
PBTD: 6500  
TD: 6500



Cement Plug	Depths	BBIs	Sxs
Surface Plug	0 - 200'	5	22
Shoe & Annular Plugs			
5 1/2" 17#/ft, perf @ 825'	725 - 825'	2	11.2
8-5/8" 24# x 5-1/2"	0 - 825'	28	137
TOC ~ estimated at 1100'			
Intermediate Plug			
5 1/2" 17#/ft,	2836 - 3086'	6	28.1
above CICR	5871 - 5921'	1	6
5 1/2" 17#/ft,	5921		
Minimum Weber Plug	5921 - 5971'	7	31
Full Plug to PBTD	5921 - 6500'	20	96
<b>Total Cement</b>			
Minimum Weber Plug	10%/1000'	49	236
Full Plug to PBTD	10%/1000'	62	300

## Notes:

- 1-
- 2-