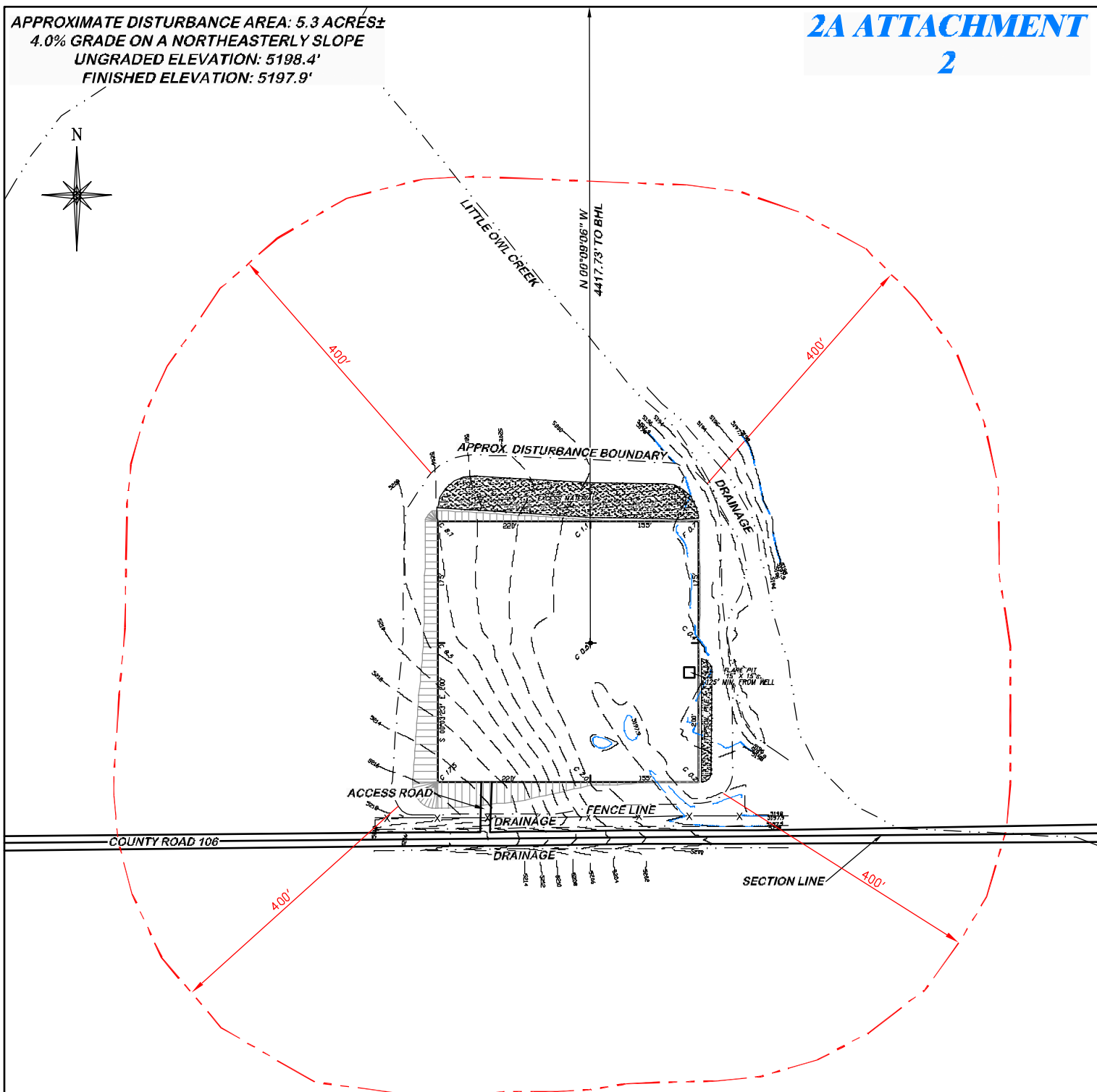


APPROXIMATE DISTURBANCE AREA: 5.3 ACRES±
 4.0% GRADE ON A NORTHEASTERLY SLOPE
 UNGRADED ELEVATION: 5198.4'
 FINISHED ELEVATION: 5197.9'

2A ATTACHMENT

2



**BEFORE DIGGING
 CALL FOR
 UTILITY LINE LOCATION**

NOTE: THE EARTH QUANTITIES ON
 THIS DRAWING ARE ESTIMATED
 AND THE USE OF IS AT THE
 RESPONSIBILITY OF THE USER.



RIFFIN & ASSOCIATES, INC.
 1414 ELK ST., ROCK SPRINGS, WY 82901

(307) 362-5028

DRAWN: 2/28/11 - MMM

SCALE: 1" = 200'

REVISED: 4/5/11 - MMM

DRG JOB No. 18344

REMOVED WELL NAME

EXHIBIT 2C

LOCATION DRAWING

CHESAPEAKE ENERGY, LLC.
VARRA 12-9-66 1H
SECTION 12, T9N, R66W

UNGRADED ELEVATION: 5198.4'
 FINISHED ELEVATION: 5197.9'