

KERR MCGEE OIL & GAS ONSHORE LP

Location: COLORADO Slot: SLOT#13 BADDING 14-35 (1017'FSL & 1637'FWL)
 Field: WELD COUNTY (KERR MCGEE) Well: BADDING 14-35
 Facility: SEC.35-T2N-R66W Wellbore: BADDING 14-35X PWB



Well Profile Data

Design Comment	MD (ft)	Inc (°)	Az (°)	TVD (ft)	Local N (ft)	Local E (ft)	DLS (°/100ft)	VS (ft)
Tie On	3859.00	1.300	214.500	3775.91	-486.51	493.86	0.00	690.05
End of Tangent	3984.00	1.300	214.500	3900.88	-488.85	492.26	0.00	690.81
3D Arc (S)	4440.49	12.000	154.141	4353.82	-535.97	510.08	2.50	738.39
End of Tangent (S)	5072.73	12.000	154.141	4972.24	-654.26	567.41	0.00	865.90
Drop (S)	5672.73	0.000	154.141	5567.86	-710.59	594.72	2.00	926.62
End of Tangent	7838.86	0.000	154.141	7734.00	-710.59	594.72	0.00	926.62

Location Information

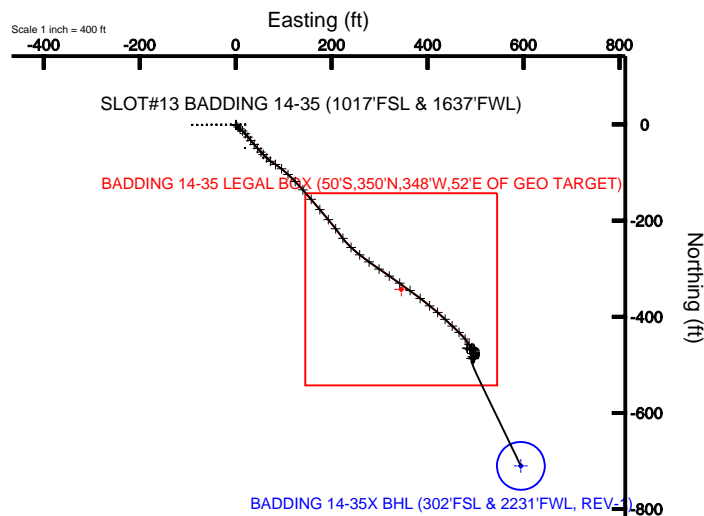
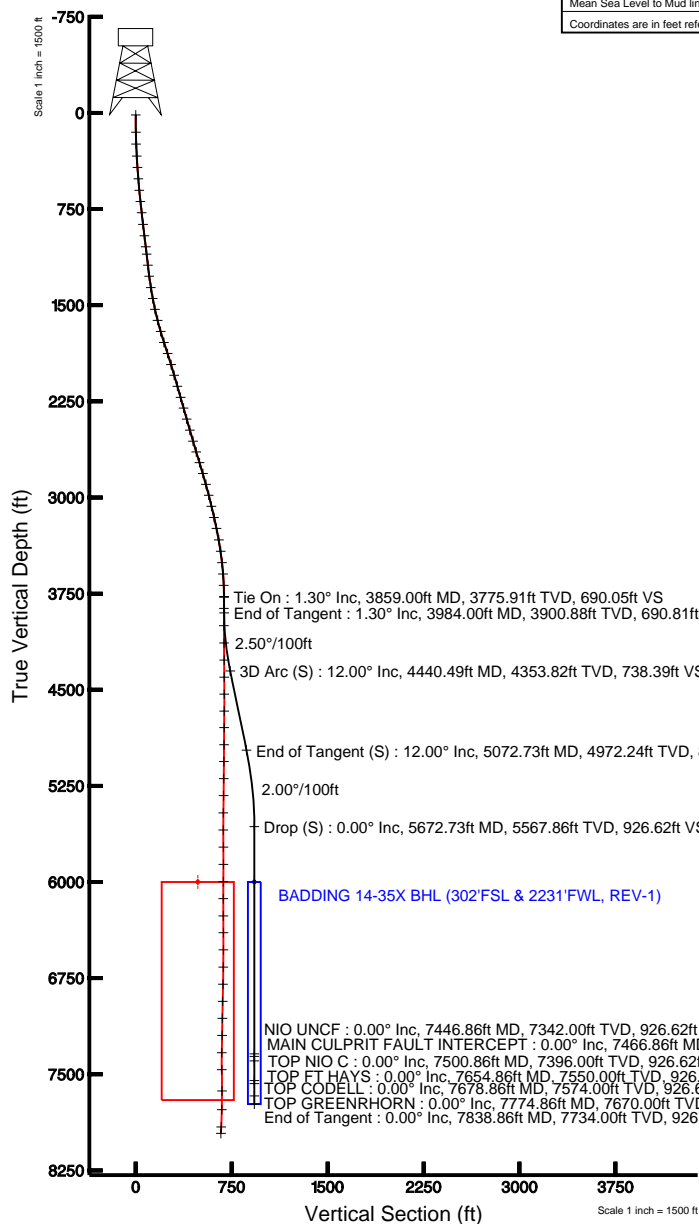
Facility Name				Grid East (USft)	Grid North (USft)	Latitude	Longitude
SEC.35-T2N-R66W				3212437.053	1276504.368	40°05'23.636"N	104°44'26.527"W
Slot	Local N (ft)	Local E (ft)		Grid East (USft)	Grid North (USft)	Latitude	Longitude
SLOT#13 BADDING 14-35 (1017'FSL & 1637'FWL)	75.85	-2008.65		3210427.912	1276563.018	40°05'24.385"N	104°44'52.372"W
XTREME 15 (RKB) to Mud line (Facility: SEC.35-T2N-R66W)						5122ft	
Mean Sea Level to Mud line (Facility: SEC.35-T2N-R66W)						0ft	
XTRFME 15 (RKB) to Mean Sea Level						5122ft	

Targets

Name	MD (ft)	TVD (ft)	Local N (ft)	Local E (ft)	Grid East (USft)	Grid North (USft)	Latitude	Longitude
BADDING 14-35 LEGAL BOX (50°S,350°N,348°W,52°E OF GEO TARGET)		6000.00	-343.08	345.29	3210776.09	1276222.89	40°05'20.995"N	104°44'47.929"W
BADDING 14-35X BHL (302°FSL & 2231°FWL, REV-1)		6000.00	-710.59	594.72	3211028.61	1275857.52	40°05'17.383"N	104°44'44.720"W

Plot reference wellpath is BADDING 14-35X (REV-B.0) PWP

True vertical depths are referenced to XTREME 15 (RKB)	Grid System: NAD83 / Lambert Colorado State Planes, Northern Zone (501), US feet
Measured depths are referenced to XTREME 15 (RKB)	North Reference: True north
XTREME 15 (RKB) to Mean Sea Level: 5122 feet	Scale: True distance
Mean Sea Level to Mud line (Facility: SEC.35-T2N-R66W): 0 feet	Depths are in feet
Coordinates are in feet referenced to Slot	Created by: cookdanm on 4/21/2011



BGGM (1945.0 to 2012.0) Dip: 66.83° Field: 53013 nT
 Magnetic North is 8.82 degrees East of True North (at 3/16/2011)

To correct azimuth from Magnetic to True add 8.82 degrees
 For example: if the Magnetic North Azimuth = 90 degs, then the Grid North Azimuth = 90 + 8.82 = 98.82



Planned Wellpath Report

BADDING 14-35X (REV-B.0) PWP

Page 1 of 4



INTEQ

REFERENCE WELLPATH IDENTIFICATION

Operator	KERR MCGEE OIL & GAS ONSHORE LP	Slot	SLOT#13 BADDING 14-35 (1017'FSL & 1637'FWL)
Area	COLORADO	Well	BADDING 14-35
Field	WELD COUNTY (KERR MCGEE)	Wellbore	BADDING 14-35X PWB
Facility	SEC.35-T2N-R66W	Sidetrack from	BADDING 14-35 AWB at 3859.00 MD

REPORT SETUP INFORMATION

Projection System	NAD83 / Lambert Colorado State Planes, Northern Zone (501), US feet	Software System	WellArchitect® 2.0
North Reference	True	User	Cookdanm
Scale	0.999961	Report Generated	4/21/2011 at 3:08:54 PM
Convergence at slot	0.49° East	Database/Source file	Denver Server/BADDING_14-35X_PWB_.xml

WELLPATH LOCATION

	Local coordinates		Grid coordinates		Geographic coordinates	
	North[ft]	East[ft]	Easting[USft]	Northing[USft]	Latitude	Longitude
Slot Location	75.85	-2008.65	3210427.91	1276563.02	40°05'24.385"N	104°44'52.372"W
Facility Reference Pt			3212437.05	1276504.37	40°05'23.636"N	104°44'26.527"W
Field Reference Pt			3197771.84	1268891.29	40°04'09.600"N	104°47'36.000"W

WELLPATH DATUM

Calculation method	Minimum curvature	XTREME 15 (RKB) to Facility Vertical Datum	5122.00ft
Horizontal Reference Pt	Slot	XTREME 15 (RKB) to Mean Sea Level	5122.00ft
Vertical Reference Pt	XTREME 15 (RKB)	Facility Vertical Datum to Mud Line (Facility)	0.00ft
MD Reference Pt	XTREME 15 (RKB)	Section Origin	N 0.00, E 0.00 ft
Field Vertical Reference	Mean Sea Level	Section Azimuth	140.07°



Planned Wellpath Report

BADDING 14-35X (REV-B.0) PWP

Page 2 of 4



INTEQ

REFERENCE WELLPATH IDENTIFICATION

Operator	KERR MCGEE OIL & GAS ONSHORE LP	Slot	SLOT#13 BADDING 14-35 (1017'FSL & 1637'FWL)
Area	COLORADO	Well	BADDING 14-35
Field	WELD COUNTY (KERR MCGEE)	Wellbore	BADDING 14-35X PWB
Facility	SEC.35-T2N-R66W	Sidetrack from	BADDING 14-35 AWB at 3859.00 MD

WELLPATH DATA (51 stations) † = interpolated/extrapolated station

MD [ft]	Inclination [°]	Azimuth [°]	TVD [ft]	Vert Sect [ft]	North [ft]	East [ft]	DLS [°/100ft]	Comments
3859.00	1.300	214.500	3775.91	690.05	-486.51	493.86	0.00	Tie On
3959.00†	1.300	214.500	3875.88	690.66	-488.38	492.58	0.00	
3984.00	1.300	214.500	3900.88	690.81	-488.85	492.26	0.00	End of Tangent
4059.00†	2.682	174.807	3975.83	692.48	-491.29	491.93	2.50	
4159.00†	5.046	162.120	4075.60	698.48	-497.81	493.50	2.50	
4259.00†	7.499	157.604	4174.99	708.78	-508.03	497.33	2.50	
4359.00†	9.975	155.313	4273.83	723.36	-521.94	503.44	2.50	
4440.49	12.000	154.141	4353.82	738.39	-535.97	510.08	2.50	3D Arc (S)
4459.00†	12.000	154.141	4371.92	742.13	-539.44	511.76	0.00	
4559.00†	12.000	154.141	4469.74	762.29	-558.14	520.83	0.00	
4659.00†	12.000	154.141	4567.55	782.46	-576.85	529.90	0.00	
4759.00†	12.000	154.141	4665.37	802.63	-595.56	538.96	0.00	
4859.00†	12.000	154.141	4763.18	822.80	-614.27	548.03	0.00	
4959.00†	12.000	154.141	4861.00	842.96	-632.98	557.10	0.00	
5059.00†	12.000	154.141	4958.81	863.13	-651.69	566.17	0.00	
5072.73	12.000	154.141	4972.24	865.90	-654.26	567.41	0.00	End of Tangent (S)
5159.00†	10.275	154.141	5056.88	882.06	-669.26	574.68	2.00	
5259.00†	8.275	154.141	5155.57	897.70	-683.76	581.71	2.00	
5359.00†	6.275	154.141	5254.76	909.98	-695.15	587.23	2.00	
5459.00†	4.275	154.141	5354.33	918.89	-703.42	591.24	2.00	
5559.00†	2.275	154.141	5454.17	924.44	-708.56	593.73	2.00	
5659.00†	0.275	154.141	5554.14	926.59	-710.56	594.70	2.00	
5672.73	0.000	154.141	5567.86 [†]	926.62	-710.59	594.72	2.00	Drop (S)
5759.00†	0.000	154.141	5654.14	926.62	-710.59	594.72	0.00	
5859.00†	0.000	154.141	5754.14	926.62	-710.59	594.72	0.00	
5959.00†	0.000	154.141	5854.14	926.62	-710.59	594.72	0.00	
6059.00†	0.000	154.141	5954.14	926.62	-710.59	594.72	0.00	
6159.00†	0.000	154.141	6054.14	926.62	-710.59	594.72	0.00	
6259.00†	0.000	154.141	6154.14	926.62	-710.59	594.72	0.00	
6359.00†	0.000	154.141	6254.14	926.62	-710.59	594.72	0.00	
6459.00†	0.000	154.141	6354.14	926.62	-710.59	594.72	0.00	
6559.00†	0.000	154.141	6454.14	926.62	-710.59	594.72	0.00	
6659.00†	0.000	154.141	6554.14	926.62	-710.59	594.72	0.00	
6759.00†	0.000	154.141	6654.14	926.62	-710.59	594.72	0.00	
6859.00†	0.000	154.141	6754.14	926.62	-710.59	594.72	0.00	
6959.00†	0.000	154.141	6854.14	926.62	-710.59	594.72	0.00	
7059.00†	0.000	154.141	6954.14	926.62	-710.59	594.72	0.00	
7159.00†	0.000	154.141	7054.14	926.62	-710.59	594.72	0.00	
7259.00†	0.000	154.141	7154.14	926.62	-710.59	594.72	0.00	
7359.00†	0.000	154.141	7254.14	926.62	-710.59	594.72	0.00	
7446.86†	0.000	154.141	7342.00	926.62	-710.59	594.72	0.00	NIO UNCF
7459.00†	0.000	154.141	7354.14	926.62	-710.59	594.72	0.00	
7466.86†	0.000	154.141	7362.00	926.62	-710.59	594.72	0.00	MOAIN CULPRIT FAULT INTERCEPT
7500.86†	0.000	154.141	7396.00	926.62	-710.59	594.72	0.00	TOP NIO C
7559.00†	0.000	154.141	7454.14	926.62	-710.59	594.72	0.00	



Planned Wellpath Report

BADDING 14-35X (REV-B.0) PWP

Page 3 of 4



INTEQ

REFERENCE WELLPATH IDENTIFICATION

Operator	KERR MCGEE OIL & GAS ONSHORE LP	Slot	SLOT#13 BADDING 14-35 (1017'FSL & 1637'FWL)
Area	COLORADO	Well	BADDING 14-35
Field	WELD COUNTY (KERR MCGEE)	Wellbore	BADDING 14-35X PWB
Facility	SEC.35-T2N-R66W	Sidetrack from	BADDING 14-35 AWB at 3859.00 MD

WELLPATH DATA (51 stations) † = interpolated/extrapolated station

MD [ft]	Inclination [°]	Azimuth [°]	TVD [ft]	Vert Sect [ft]	North [ft]	East [ft]	DLS [°/100ft]	Comments
7654.86†	0.000	154.141	7550.00	926.62	-710.59	594.72	0.00	TOP FT HAYS
7659.00†	0.000	154.141	7554.14	926.62	-710.59	594.72	0.00	
7678.86†	0.000	154.141	7574.00	926.62	-710.59	594.72	0.00	TOP CODELL
7759.00†	0.000	154.141	7654.14	926.62	-710.59	594.72	0.00	
7774.86†	0.000	154.141	7670.00	926.62	-710.59	594.72	0.00	TOP GREENRHORN
7838.86	0.000	154.141	7734.00	926.62	-710.59	594.72	0.00	End of Tangent

TARGETS

Name	MD [ft]	TVD [ft]	North [ft]	East [ft]	Grid East [srv ft]	Grid North [srv ft]	Latitude	Longitude	Shape
BADDING 14-35 LEGAL BOX (50'S,350'N,348'W,52'E OF GEO TARGET)		6000.00	-343.08	345.29	3210776.09	1276222.89	40°05'20.995"N	104°44'47.929"W	square
1) BADDING 14-35X BHL (302'FSL & 2231'FWL, REV-1)		6000.00	-710.59	594.72	3211028.61	1275857.52	40°05'17.363"N	104°44'44.720"W	circle

SURVEY PROGRAM Ref Wellbore: BADDING 14-35X PWB Ref Wellpath: BADDING 14-35X (REV-B.0) PWP

Start MD [ft]	End MD [ft]	Positional Uncertainty Model	Log Name/Comment	Wellbore
15.00	3859.00	NaviTrak (Standard)		BADDING 14-35 AWB
3859.00	7838.86	NaviTrak (Standard)		BADDING 14-35X PWB



Planned Wellpath Report

BADDING 14-35X (REV-B.0) PWP

Page 4 of 4



INTEQ

REFERENCE WELLPATH IDENTIFICATION

Operator	KERR MCGEE OIL & GAS ONSHORE LP	Slot	SLOT#13 BADDING 14-35 (1017'FSL & 1637'FWL)
Area	COLORADO	Well	BADDING 14-35
Field	WELD COUNTY (KERR MCGEE)	Wellbore	BADDING 14-35X PWB
Facility	SEC.35-T2N-R66W	Sidetrack from	BADDING 14-35 AWB at 3859.00 MD

WELLPATH COMMENTS

MD [ft]	Inclination [°]	Azimuth [°]	TVD [ft]	Comment
7446.86	0.000	154.141	7342.00	NIO UNCF
7466.86	0.000	154.141	7362.00	MOAIN CULPRIT FAULT INTERCEPT
7500.86	0.000	154.141	7396.00	TOP NIO C
7654.86	0.000	154.141	7550.00	TOP FT HAYS
7678.86	0.000	154.141	7574.00	TOP CODELL
7774.86	0.000	154.141	7670.00	TOP GREENRHORN