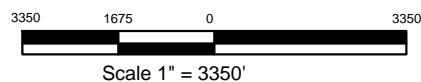


- Existing Access Road
- Proposed Access Road



BONANZA CREEK ENERGY OPERATING COMPANY, LLC

Drawing Title:

Access Road Map

Drawing Date: 04/19/2011

Well/Location Name:

Antelope I-31

Surface Location:

SWSE Sec 31, T5N, R62W, 6th PM
Lat. 40.34979 Long. -104.36626
262' FSL 2551' FEL

Drawn By: ksc