

DALEY LAND SURVEYING, INC.

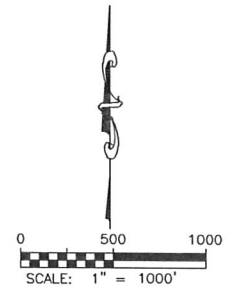
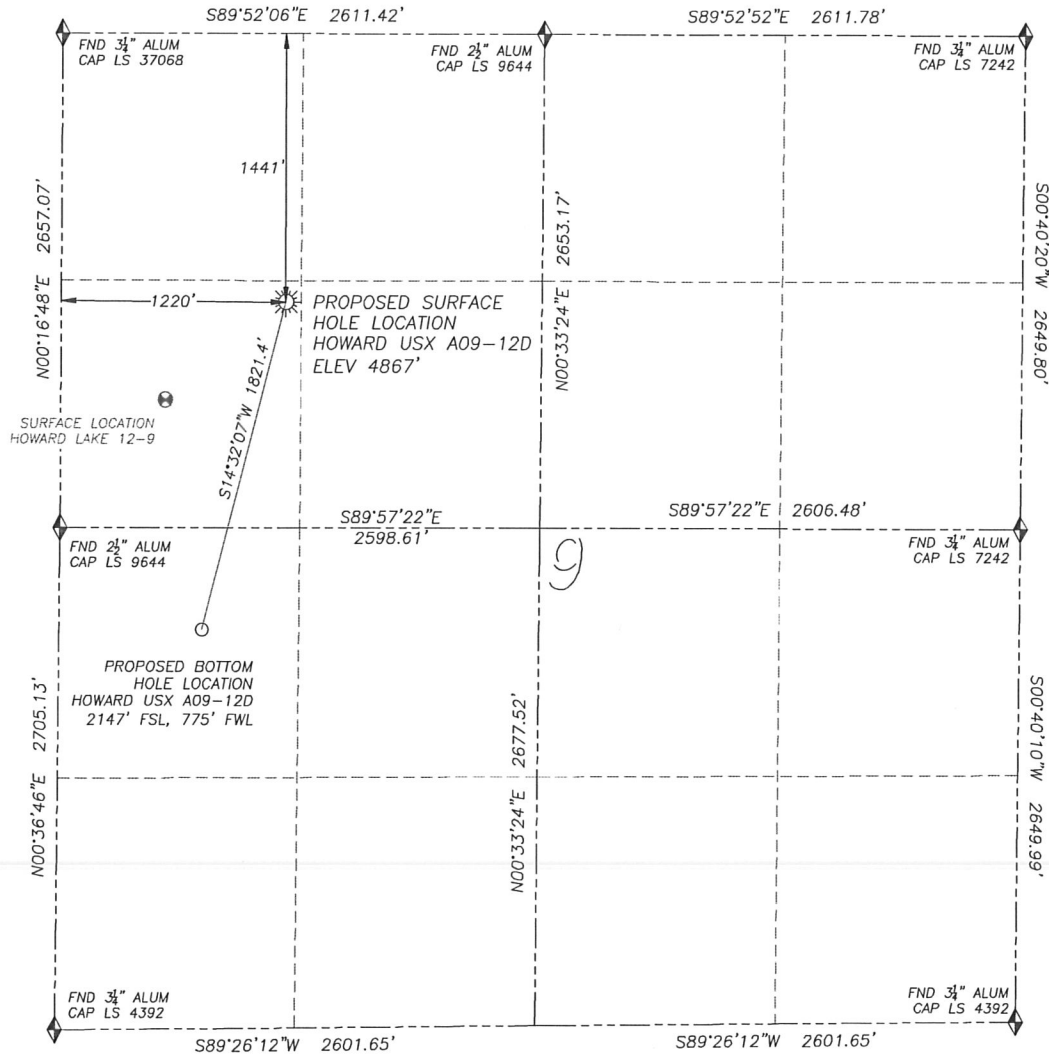
PARKER, CO. 80134

303 953 9841

# WELL LOCATION CERTIFICATE

## HOWARD USX A09-12D

SECTION 9, TOWNSHIP 6 NORTH, RANGE 64 WEST OF THE 6TH PRINCIPAL MERIDIAN



## LEGEND

- ◆ FOUND MONUMENT AS DESCRIBED
- ☼ PROPOSED WELL
- EXISTING WELL
- BOTTOM HOLE
- ⊕ ABANDONED WELL

NAD 83 LATITUDE AND LONGITUDE

HOWARD USX A09-12D SURFACE HOLE:

LATITUDE: N40.50401°

LONGITUDE: W104.55997°

ELEVATION: 4867'

FOOTAGE: 1441' FNL, 1220' FWL

PDOP: 1.3

QTR/QTR: SW4/NW4

PROP LINE: 82'± EAST

BOTTOM HOLE:

LATITUDE: N40.49917°

LONGITUDE: W104.56161°

FOOTAGE: 2147' FSL, 775' FWL

NEAREST EXISTING WELL:

HOWARD LAKE 12-9 SURFACE HOLE

LATITUDE: N40.50256°

LONGITUDE: W104.56233°

ELEVATION: 4854'

843' SOUTHWEST

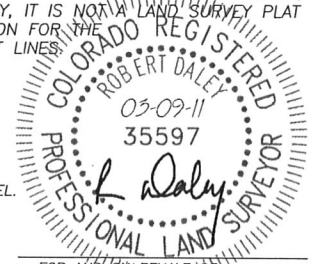
IN ACCORDANCE WITH A REQUEST FROM MIKE RODINE OF NOBLE ENERGY INC., DALEY LAND SURVEYING, INC. HAS DETERMINED THE SURFACE LOCATION OF THE HOWARD USX A09-12D WELL TO BE 1441' FNL, 1220' FWL, AS MEASURED AT NINETY (90) DEGREES FROM THE SECTION LINES OF SECTION 9, TOWNSHIP 6 NORTH, RANGE 64 WEST OF THE 6TH PRINCIPAL MERIDIAN, WELD COUNTY, COLORADO. THE BOTTOM HOLE LOCATION, PROVIDED BY THE CLIENT, IS TO BE 2147' FSL, 775' FWL.

I HEREBY CERTIFY THAT THIS WELL LOCATION CERTIFICATE WAS PREPARED BY ME OR UNDER MY DIRECT SUPERVISION, THAT THE WORK WAS COMPLETED ON 3/3/2011 FOR AND ON BEHALF OF NOBLE ENERGY, INC., AND THAT THIS MAP DOES NOT REPRESENT A BOUNDARY SURVEY, IT IS NOT A LAND SURVEY PLAT OR AN IMPROVEMENT SURVEY PLAT AND IT IS NOT TO BE RELIED UPON FOR THE ESTABLISHMENT OF FENCE, BUILDING OR OTHER FUTURE IMPROVEMENT LINES.

## NOTES:

- 1) BEARINGS FOR THIS MAP ARE ASSUMED AND BASED UPON GPS OBSERVATIONS MADE BETWEEN MONUMENTS LOCATED AT THE NORTHWEST CORNER AND WEST QUARTER CORNER OF SECTION 9, T.6N., R.64W.
- 2) HORIZONTAL DATUM IS NAD83.
- 3) VERTICAL DATUM IS NAVD88. ELEVATIONS ARE DERIVED FROM GPS OBSERVATIONS PROCESSED THROUGH OPUS, UTILIZING THE GEOID03 MODEL.
- 4) SEE LOCATION DRAWING FOR VISIBLE IMPROVEMENTS WITHIN 600' OF PROPOSED SURFACE HOLE LOCATION.
- 5) SURFACE USE: PASTURE.

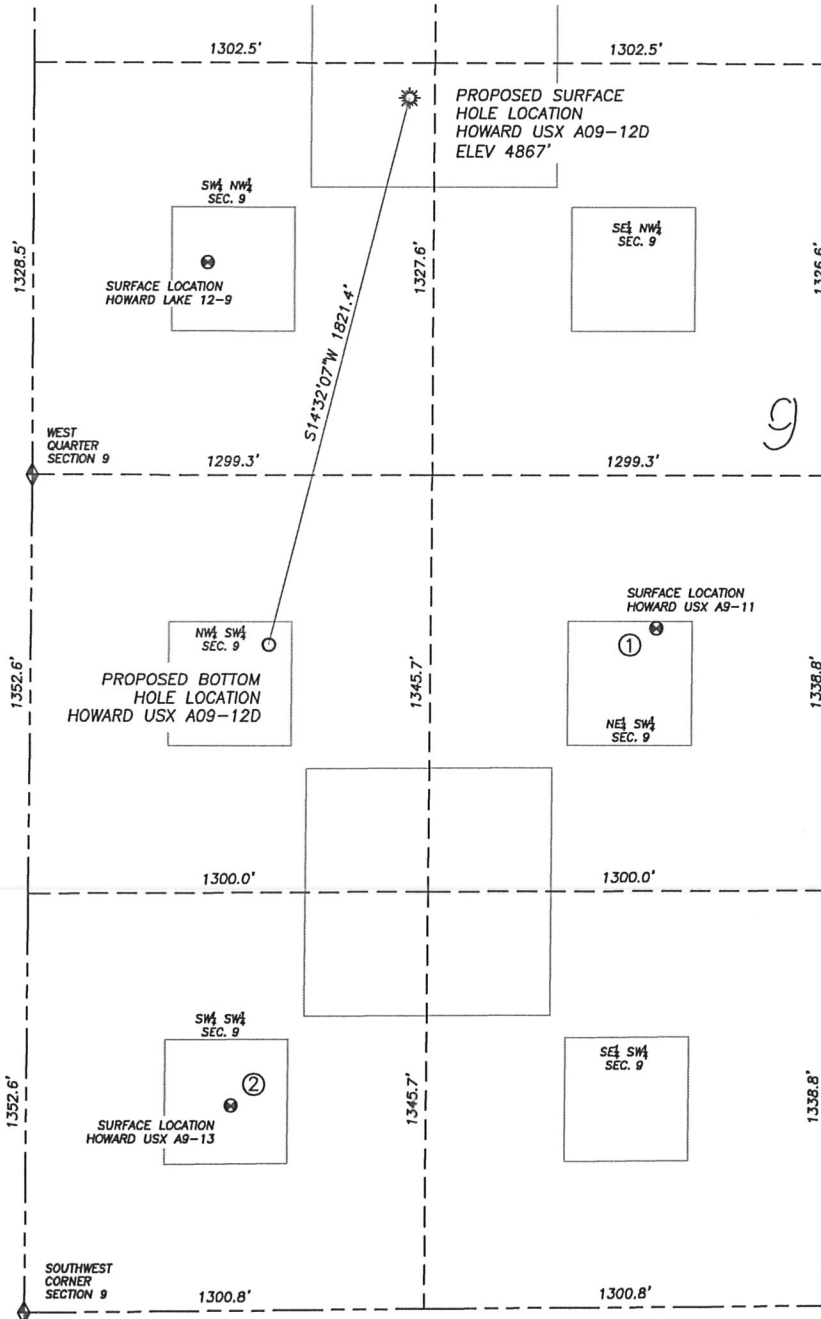
NOTICE: According to Colorado law you MUST commence any legal action based upon any defect in this W.L.C. within three years after you first discover such defect. In no event may any action based upon any such defect in this W.L.C. be commenced more than ten years from the date of the certification shown herein.



FOR AND ON BEHALF OF  
DALEY LAND SURVEYING INC.,  
Robert Daley, PLS 35597

## SITE SKETCH HOWARD USX A09-12D

SECTION 9, TOWNSHIP 6 NORTH, RANGE 64 WEST OF THE 6TH PRINCIPAL MERIDIAN

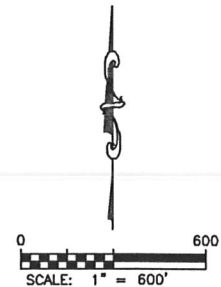


①

HOWARD USX A9-11  
NE/SW SEC. 9  
2189' FSL, 2032' FWL  
1258' E OF PROPOSED  
BOTTOM HOLE LOCATION  
LAT. N40.49932°  
LONG. W104.55709°  
EL: 4837'  
PDOP 1.5

②

HOWARD USX A9-13  
SW/SW SEC. 9  
661' FSL, 666' FWL  
1493' S OF PROPOSED  
BOTTOM HOLE LOCATION  
LAT. N40.49509°  
LONG. W104.56206°  
EL: 4832'  
PDOP 1.7



## NOTES:

- 1) THIS DOES NOT REPRESENT A BOUNDARY SURVEY
- 2) THE LATITUDES AND LONGITUDES SHOWN ARE REFERENCED TO NAD83
- 3) DATUM FOR ELEVATION IS NAVD88. ELEVATIONS ARE DERIVED FROM GPS-RTK OBSERVATIONS PROCESSED THROUGH OPUS, UTILIZING THE GEOID03 MODEL.

## LEGEND

- FOUND MONUMENT AS DESCRIBED
- PROPOSED WELL
- EXISTING WELL
- BOTTOM HOLE
- ABANDONED WELL

## PAD DETAIL

