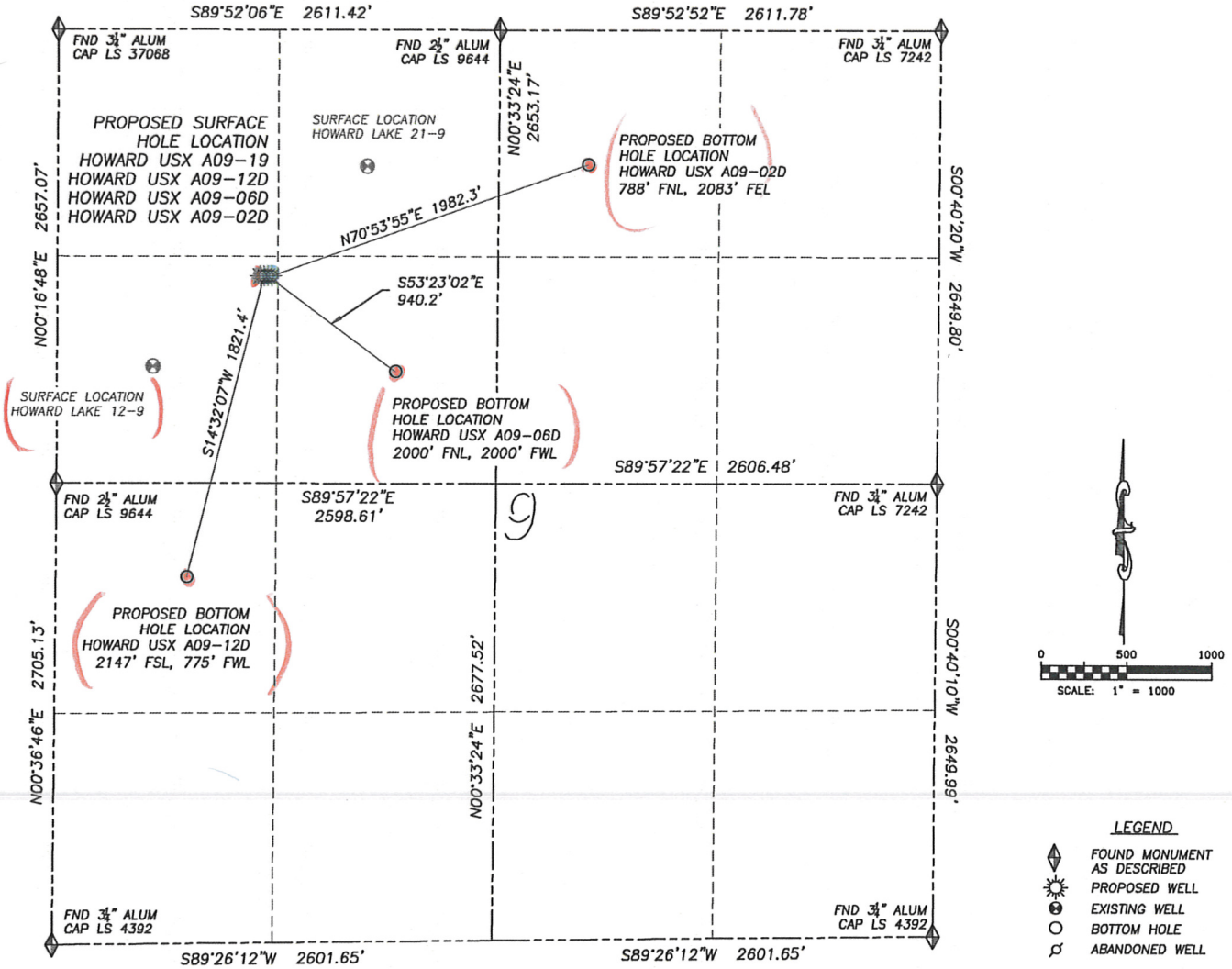


MULTI-WELL PLAN DIRECTIONAL LAYOUT
HOWARD USX A09-19, 12D, 06D & 02D

SECTION 9, TOWNSHIP 6 NORTH, RANGE 64 WEST OF THE 6TH PRINCIPAL MERIDIAN



NAD 83 LATITUDE AND LONGITUDE

HOWARD USX A09-19
SURFACE HOLE:
 LATITUDE: N40.50401'
 LONGITUDE: W104.56005'
 ELEVATION: 4866'
 FOOTAGE: 1441' FNL,
 1198' FWL

NEAREST EXISTING WELL:
 HOWARD LAKE 12-9
 LATITUDE: N40.50256'
 LONGITUDE: W104.56233'
 ELEVATION: 4854'
 825' SOUTHWEST

HOWARD USX A09-12D
SURFACE HOLE:
 LATITUDE: N40.50401'
 LONGITUDE: W104.55997'
 ELEVATION: 4867'
 FOOTAGE: 1441' FNL,
 1220' FWL

BOTTOM HOLE:
 LATITUDE: N40.49917'
 LONGITUDE: W104.56161'
 FOOTAGE: 2147' FSL,
 775' FWL

NEAREST EXISTING WELL:
 HOWARD LAKE 12-9
 LATITUDE: N40.50256'
 LONGITUDE: W104.56233'
 ELEVATION: 4854'
 843' SOUTHWEST

HOWARD USX A09-06D
SURFACE HOLE:
 LATITUDE: N40.50401'
 LONGITUDE: W104.55989'
 ELEVATION: 4867'
 FOOTAGE: 1441' FNL,
 1243' FWL

BOTTOM HOLE:
 LATITUDE: N40.50247'
 LONGITUDE: W104.55717'
 FOOTAGE: 2000' FNL,
 2000' FWL

NEAREST EXISTING WELL:
 HOWARD LAKE 12-9
 LATITUDE: N40.50256'
 LONGITUDE: W104.56233'
 ELEVATION: 4854'
 860' SOUTHWEST

HOWARD USX A09-02D
SURFACE HOLE:
 LATITUDE: N40.50401'
 LONGITUDE: W104.55980'
 ELEVATION: 4868'
 FOOTAGE: 1441' FNL,
 1265' FWL

BOTTOM HOLE:
 LATITUDE: N40.50579'
 LONGITUDE: W104.55307'
 FOOTAGE: 788' FNL,
 2083' FEL

NEAREST EXISTING WELL:
 HOWARD LAKE 21-9
 LATITUDE: N40.50576'
 LONGITUDE: W104.55776'
 ELEVATION: 4892'
 856' NORTHEAST

MULTI-WELL PLAN LOCATION DRAWING HOWARD USX A09-19, 12D, 06D & 02D

SECTION 9, TOWNSHIP 6 NORTH, RANGE 64 WEST OF THE 6TH PRINCIPAL MERIDIAN

