

EnCana Oil & Gas Inc.

**Well Pad (K19CNE) Expansion
SEC. 19, T6S, R92W, 6th P.M.**

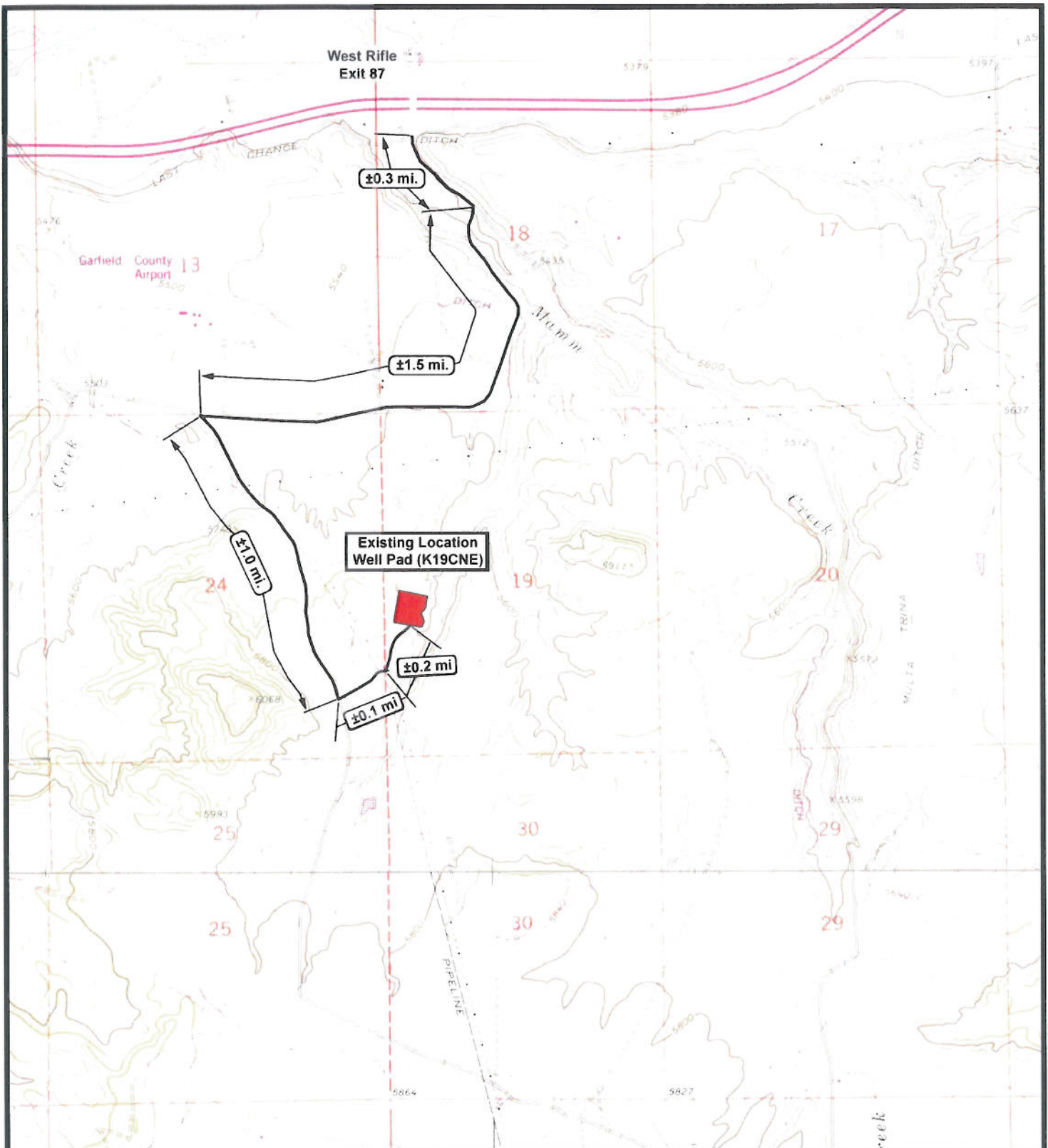


**Tri-State
Land Surveying Inc.**
(435) 781-2501
180 North Vernal Ave. Vernal, Utah 84078

**SCALE: 1 = 100,000
DRAWN BY: JAS
DATE: 02-24-2011**

Legend
Existing Road
Proposed Access

TOPOGRAPHIC MAP
"A"
SHEET 9 OF 11



EnCana Oil & Gas Inc.

Well Pad (K19CNE) Expansion
SEC. 19, T6S, R92W, 6th P.M.



Tri-State
Land Surveying Inc.
 (435) 781-2501
 180 North Vernal Ave. Vernal, Utah 84078

SCALE: 1" = 2,000'
DRAWN BY: JAS
DATE: 02-24-2011

Legend
 — Existing Road
 — Proposed Access

TOPOGRAPHIC MAP **SHEET**
"B" **10**
 OF 11