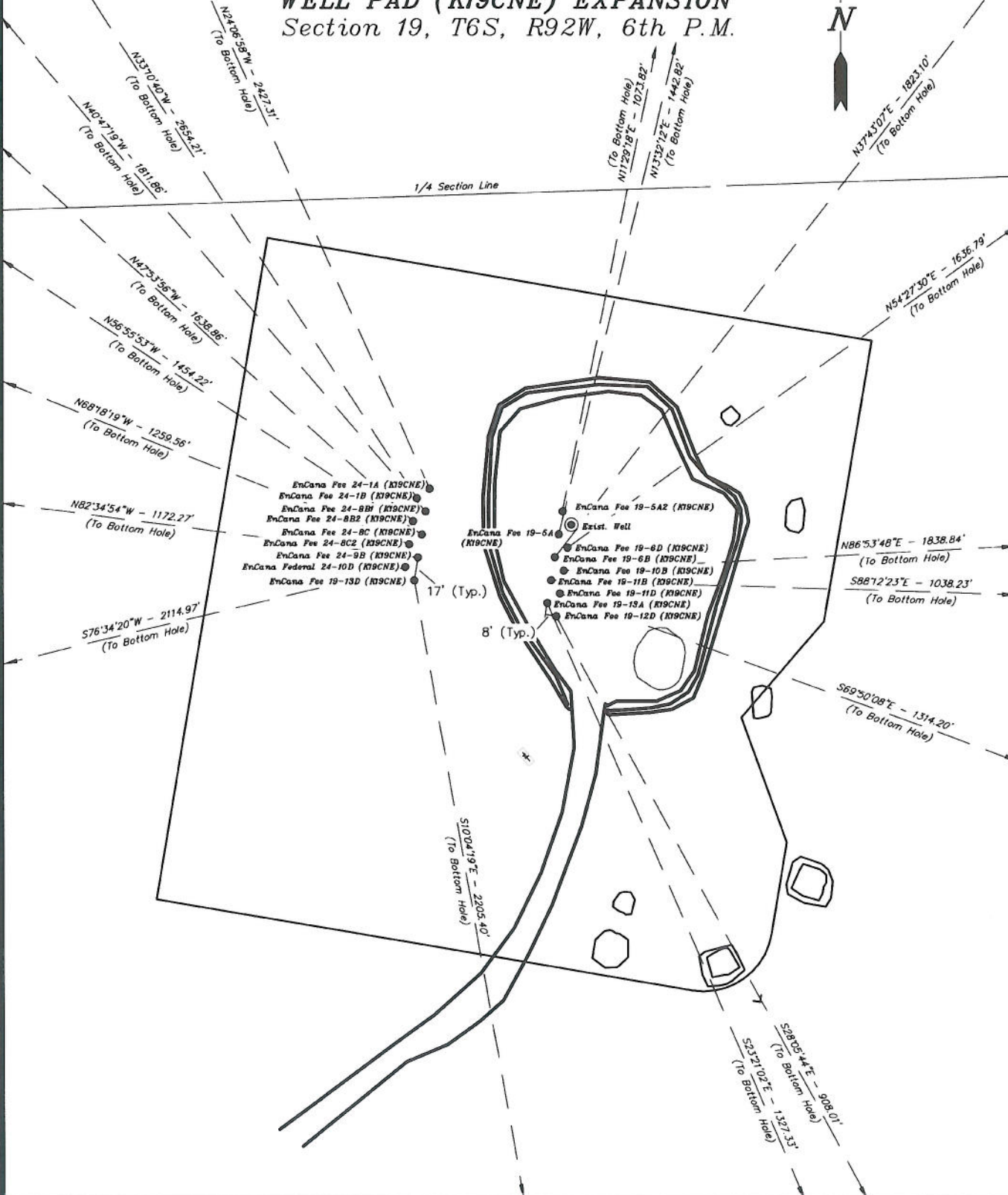


EnCana OIL & GAS (USA) INC

DETAILED MULTI WELL PLAN WELL PAD INTERFERENCE PLAT WELL PAD (K19CNE) EXPANSION Section 19, T6S, R92W, 6th P.M.



SURVEYED BY: C.D.S.	DATE SURVEYED: 11-08-10
DRAWN BY: L.C.S.	DATE DRAWN: 12-23-10
SCALE: 1" = 60'	REVISED: L.C.S. 02-24-11

Tri State
Land Surveying, Inc.
180 NORTH VERNAL AVE. VERNAL, UTAH 84078
(435) 781-2501

SHEET
3a
OF 11

EnCana OIL & GAS (USA) INC

DETAILED MULTI WELL PLAN WELL PAD INTERFERENCE PLAT WELL PAD (K19CNE) EXPANSION Section 19, T6S, R92W, 6th P.M.

TOP HOLE FOOTAGES

EnCana Fee 19-12D (K19CNE)
2291' FSL & 416' FWL

EnCana Fee 19-13A (K19CNE)
2301' FSL & 410' FWL

EnCana Fee 19-11D (K19CNE)
2308' FSL & 419' FWL

EnCana Fee 19-11B (K19CNE)
2318' FSL & 413' FWL

EnCana Fee 19-10B (K19CNE)
2325' FSL & 422' FWL

EnCana Fee 19-6B (K19CNE)
2334' FSL & 416' FWL

EnCana Fee 19-6D (K19CNE)
2341' FSL & 426' FWL

EnCana Fee 19-5A (K19CNE)
2351' FSL & 419' FWL

EnCana Fee 19-5A2 (K19CNE)
2368' FSL & 422' FWL

EnCana Fee 19-13D (K19CNE)
2320' FSL & 312' FWL

EnCana Federal 24-10D (K19CNE)
2330' FSL & 305' FWL

EnCana Fee 24-9B (K19CNE)
2337' FSL & 315' FWL

TOP HOLE FOOTAGES

EnCana Fee 24-8C2 (K19CNE)
2347' FSL & 308' FWL

EnCana Fee 24-8C (K19CNE)
2354' FSL & 318' FWL

EnCana Fee 24-8B2 (K19CNE)
2363' FSL & 312' FWL

EnCana Fee 24-8B1 (K19CNE)
2370' FSL & 321' FWL

EnCana Fee 24-1B (K19CNE)
2380' FSL & 315' FWL

EnCana Fee 24-1A (K19CNE)
2387' FSL & 324' FWL

BOTTOM HOLE FOOTAGES

EnCana Fee 19-6D (K19CNE)
2000' FNL & 1770' FWL

EnCana Fee 19-5A (K19CNE)
1510' FNL & 775' FWL

EnCana Fee 19-5A2 (K19CNE)
1840' FNL & 650' FWL

EnCana Fee 19-13D (K19CNE)
140' FSL & 660' FWL

EnCana Federal 24-10D (K19CNE)
1855' FSL & 1760' FEL

EnCana Fee 24-9B (K19CNE)
2500' FSL & 845' FEL

BOTTOM HOLE FOOTAGES

EnCana Fee 19-12D (K19CNE)
1480' FSL & 830' FWL

EnCana Fee 19-13A (K19CNE)
1070' FSL & 915' FWL

EnCana Fee 19-11D (K19CNE)
1825' FSL & 1645' FWL

EnCana Fee 19-11B (K19CNE)
2260' FSL & 1450' FWL

EnCana Fee 19-10B (K19CNE)
2380' FSL & 2260' FWL

EnCana Fee 19-6B (K19CNE)
1510' FNL & 1550' FWL

EnCana Fee 24-8C2 (K19CNE)
2430' FNL & 855' FEL

EnCana Fee 24-8C (K19CNE)
2095' FNL & 890' FEL

EnCana Fee 24-8B2 (K19CNE)
1780' FNL & 890' FEL

EnCana Fee 24-8B1 (K19CNE)
1500' FNL & 845' FEL

EnCana Fee 24-1B (K19CNE)
640' FNL & 1110' FEL

EnCana Fee 24-1A (K19CNE)
640' FNL & 640' FEL

EXISTING LATITUDE & LONGITUDE Surface position of Wells (NAD 83)

WELL	LATITUDE	LONGITUDE
Exis. Well	39.511293°	107.713414°

RELATIVE COORDINATES From top hole to bottom hole

WELL	NORTH	EAST	WELL	NORTH	EAST
19-12D	-801'	428'	19-13D	-2,171'	386'
19-13A	-1,219'	526'	24-10D	-491'	-2,057'
19-11D	-453'	1,234'	24-9B	151'	-1,162'
19-11B	-33'	1,038'	24-8C2	466'	-1,170'
19-10B	100'	1,836'	24-8C	793'	-1,219'
19-6B	1,442'	1,115'	24-8B2	1,099'	-1,216'
19-6D	951'	1,332'	24-8B1	1,372'	-1,184'
19-5A	1,403'	338'	24-1B	2,222'	-1,452'
19-5A2	1,052'	214'	24-1A	2,215'	-992'

LATITUDE & LONGITUDE Surface position of Wells (NAD 83)

WELL	LATITUDE	LONGITUDE
19-12D	39.511109°	107.713454°
19-13A	39.511135°	107.713477°
19-11D	39.511155°	107.713444°
19-11B	39.511181°	107.713467°
19-10B	39.511201°	107.713434°
19-6B	39.511227°	107.713457°
19-6D	39.511247°	107.713424°
19-5A	39.511273°	107.713447°
19-5A2	39.511319°	107.713437°
19-13D	39.511181°	107.713826°
24-10D	39.511208°	107.713849°
24-9B	39.511227°	107.713816°
24-8C2	39.511254°	107.713839°
24-8C	39.511273°	107.713806°
24-8B2	39.511300°	107.713829°
24-8B1	39.511319°	107.713796°
24-1B	39.511346°	107.713819°
24-1A	39.511365°	107.713786°

LATITUDE & LONGITUDE Bottom hole position of Wells (NAD 83)

WELL	LATITUDE	LONGITUDE
19-12D	39.508909°	107.711941°
19-13A	39.507790°	107.711617°
19-11D	39.509908°	107.709075°
19-11B	39.511090°	107.709790°
19-10B	39.511470°	107.706928°
19-6B	39.515183°	107.709501°
19-6D	39.513855°	107.708702°
19-5A	39.515122°	107.712246°
19-5A2	39.514207°	107.712676°
19-13D	39.505221°	107.712466°
24-10D	39.509864°	107.721139°
24-9B	39.511645°	107.717935°
24-8C2	39.512534°	107.717985°
24-8C	39.513454°	107.718122°
24-8B2	39.514318°	107.718135°
24-8B1	39.515087°	107.717986°
24-1B	39.517446°	107.718960°
24-1A	39.517448°	107.717294°

SURVEYED BY: C.D.S. DATE SURVEYED: 11-08-10
 DRAWN BY: L.C.S. DATE DRAWN: 12-23-10
 SCALE: REVISED: L.C.S. 02-24-11

Tri State
 Land Surveying, Inc.
 180 NORTH VERNAL AVE. VERNAL, UTAH 84078
 (435) 781-2501

SHEET
3b
 OF 11