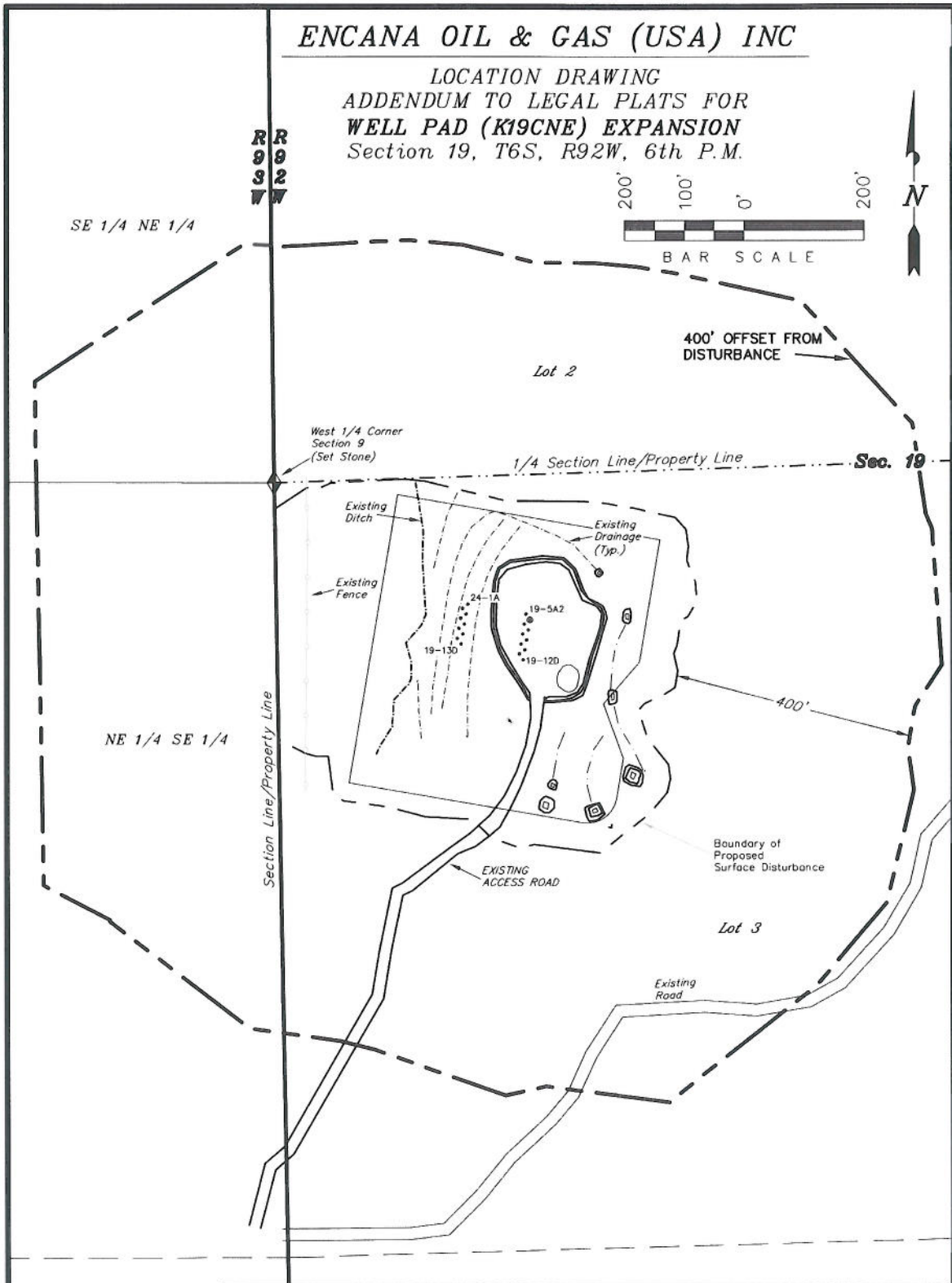


ENCANA OIL & GAS (USA) INC

LOCATION DRAWING
ADDENDUM TO LEGAL PLATS FOR
WELL PAD (K19CNE) EXPANSION
Section 19, T6S, R92W, 6th P.M.



Distances from Well Heads

WELL	BUILDING	ABOVE GROUND UTILITY	PUBLIC ROAD	RAILROAD	WELL	BUILDING	ABOVE GROUND UTILITY	PUBLIC ROAD	RAILROAD
19-12D	1,274'	1,274'	1,135'	1.85 MILES	19-13D	1,202'	1,202'	1,040'	1.85 MILES
19-13A	1,262'	1,262'	1,123'	1.85 MILES	24-10D	1,190'	1,190'	1,029'	1.85 MILES
19-11D	1,261'	1,261'	1,126'	1.85 MILES	24-9B	1,188'	1,188'	1,030'	1.85 MILES
19-11B	1,249'	1,249'	1,114'	1.85 MILES	24-8C2	1,176'	1,176'	1,019'	1.85 MILES
19-10B	1,247'	1,247'	1,117'	1.85 MILES	24-8C	1,174'	1,174'	1,021'	1.85 MILES
19-6B	1,236'	1,236'	1,106'	1.85 MILES	24-8B2	1,162'	1,162'	1,010'	1.85 MILES
19-6D	1,234'	1,234'	1,108'	1.85 MILES	24-8B1	1,160'	1,160'	1,012'	1.85 MILES
19-5A	1,223'	1,223'	1,097'	1.85 MILES	24-1B	1,149'	1,149'	1,000'	1.85 MILES
19-5A2	1,210'	1,210'	1,089'	1.85 MILES	24-1A	1,147'	1,147'	1,002'	1.85 MILES

SURVEYED BY: C.D.S.
DRAWN BY: L.C.S.
SCALE: 1" = 200'

DATE SURVEYED: 11-08-10
DATE DRAWN: 12-23-10
REVISED: L.C.S. 02-24-11

Tri State
Land Surveying, Inc.
180 NORTH VERNAL AVE. VERNAL, UTAH 84078
(435) 781-2501

SHEET
2s
OF 11