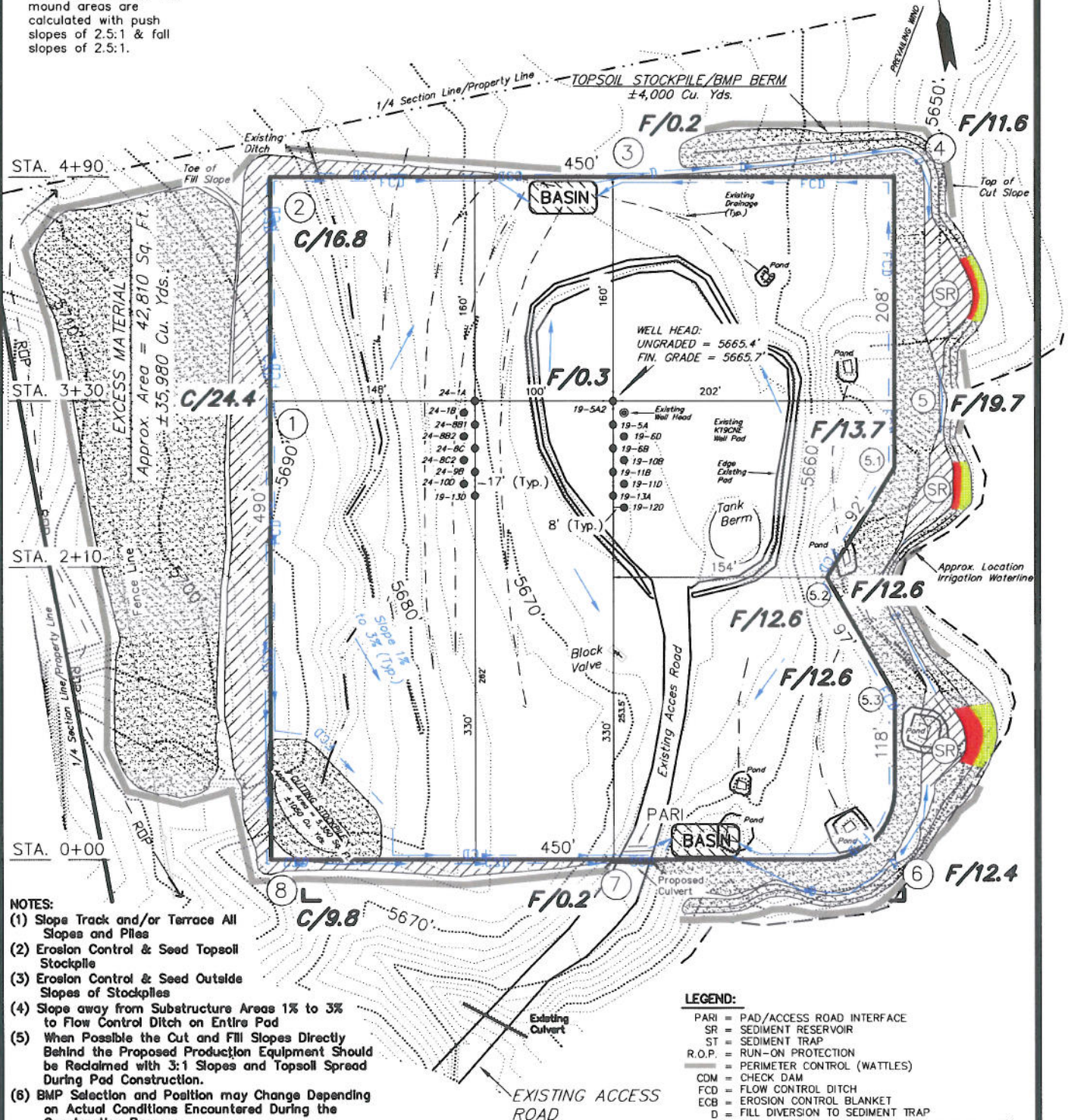


ENCANA OIL & GAS (USA) INC

CONSTRUCTION LAYOUT DRAWING WELL PAD (K19CNE) EXPANSION Section 19, T6S, R92W, 6th P.M.

NOTE:
The topsoil & waste material area is calculated as being mounds containing 4,000 cubic yards of dirt (a 15% fluff factor is included). The mound areas are calculated with push slopes of 2.5:1 & fill slopes of 2.5:1.



NOTES:

- (1) Slope Track and/or Terrace All Slopes and Piles
- (2) Erosion Control & Seed Topsoil Stockpiles
- (3) Erosion Control & Seed Outside Slopes of Stockpiles
- (4) Slope away from Substructure Areas 1% to 3% to Flow Control Ditch on Entire Pad
- (5) When Possible the Cut and Fill Slopes Directly Behind the Proposed Production Equipment Should be Reclaimed with 3:1 Slopes and Topsoil Spread During Pad Construction.
- (6) BMP Selection and Position may Change Depending on Actual Conditions Encountered During the Construction Process.
- (7) All BMP's Shall have Inlet and Outlet Protection.
- (8) All BMP's to be constructed to EnCana Oil & Gas (USA) Inc. BMP Manual's Specifications.

LEGEND:

- PARI = PAD/ACCESS ROAD INTERFACE
- SR = SEDIMENT RESERVOIR
- ST = SEDIMENT TRAP
- R.O.P. = RUN-ON PROTECTION
- CDM = CHECK DAM
- FCD = FLOW CONTROL DITCH
- ECB = EROSION CONTROL BLANKET
- D = FILL DIVERSION TO SEDIMENT TRAP
- CSD = CUT SLOPE DIVERSION (BERM TOE OF CUT SLOPE)
- VCB = VEGETATION BUFFER (UNDISTURBED LAND INSIDE PC)
- SEED, ECB & FLEX
- LEVEL SPREADER

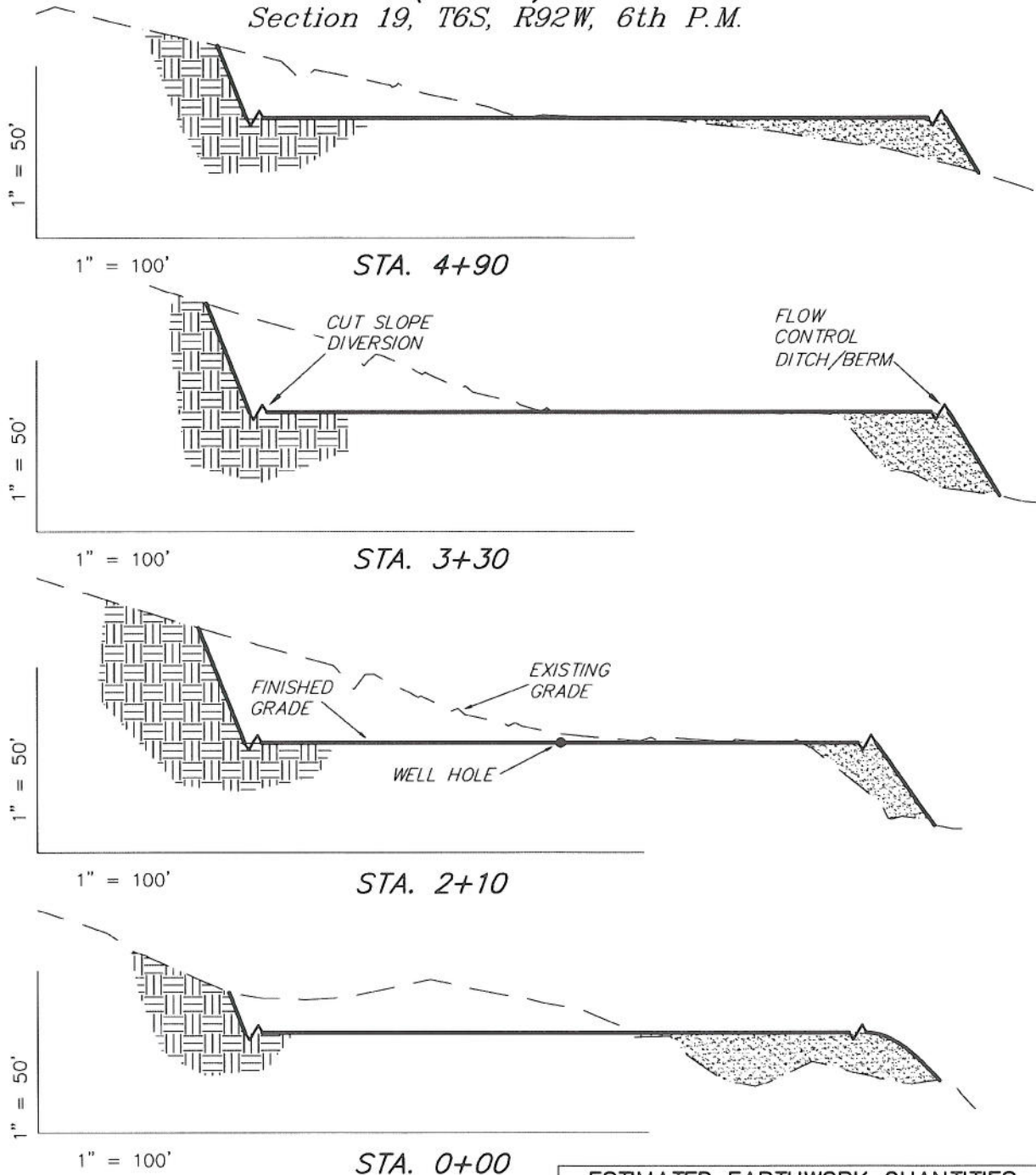
SURVEYED BY: C.D.S. DATE SURVEYED: 11-08-10
DRAWN BY: L.C.S. DATE DRAWN: 12-23-10
SCALE: 1" = 100' REVISED: L.C.S. 02-24-11

Tri State
Land Surveying, Inc.
180 NORTH VERNAL AVE. VERNAL, UTAH 84078
(435) 781-2501

SHEET
4
OF 11

ENCANA OIL & GAS (USA) INC

CROSS SECTIONS WELL PAD (K19CNE) EXPANSION Section 19, T6S, R92W, 6th P.M.



NOTE:
UNLESS OTHERWISE NOTED
CUT SLOPES ARE AT 1:1
FILL SLOPES ARE AT 1.5:1

ESTIMATED EARTHWORK QUANTITIES (No Shrink or swell adjustments have been used) (Expressed in Cubic Yards)				
ITEM	CUT	FILL	6" TOPSOIL	EXCESS
PAD	50,170	18,880	Topsoil is not included in Pad Cut	31,290
PIT	N/A	N/A		N/A
TOTALS	50,170	18,880	4,000	31,290

SURVEYED BY: C.D.S. DATE SURVEYED: 11-08-10
DRAWN BY: L.C.S. DATE DRAWN: 12-23-10
SCALE: 1" = 100' REVISED: L.C.S. 02-24-11

Tri State
Land Surveying, Inc.
(435) 781-2501
180 NORTH VERNAL AVE. VERNAL, UTAH 84078

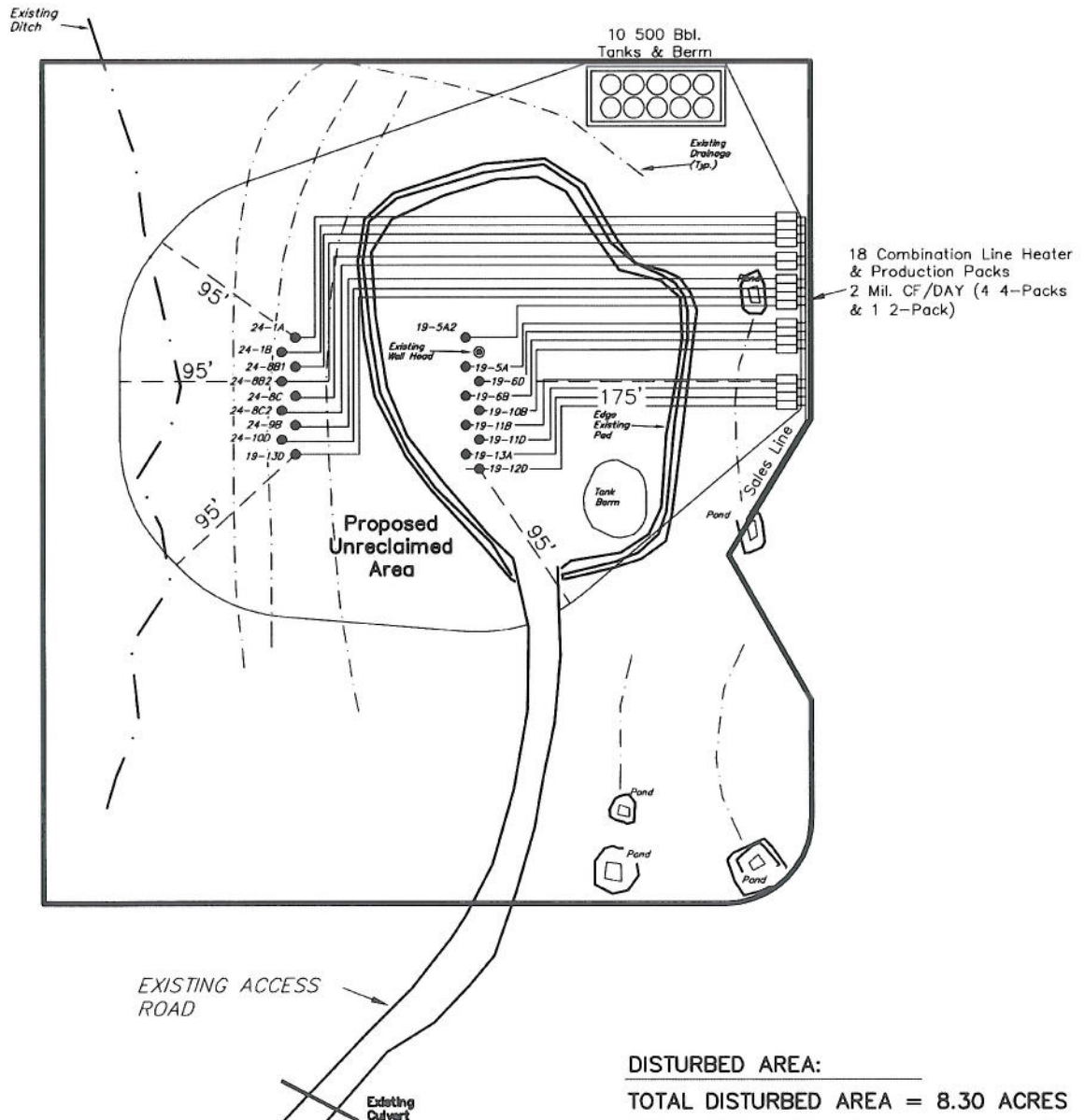
SHEET
5
OF 11

ENCANA OIL & GAS (USA) INC

PRODUCTION SCHEMATIC WELL PAD (K19CNE) EXPANSION Section 19, T6S, R92W, 6th P.M.

Notes:

1. Reclaimed area to include seeding of approved vegetation and sufficient storm water management system.
2. Reclaimed Pad to have storm water Management BMP's Per Encana Oil & Gas (USA) Inc. BMP Manual.
3. Actual Equipment Layout and Reclaimed Pad Surface Area May Change do to Production Requirements or Site Conditions.



DISTURBED AREA:

TOTAL DISTURBED AREA = 8.30 ACRES
TOTAL RECLAIMED AREA = 5.66 ACRES
UNRECLAIMED AREA = 2.70 ACRES

SURVEYED BY: C.D.S.	DATE SURVEYED: 11-08-10
DRAWN BY: L.C.S.	DATE DRAWN: 12-23-10
SCALE: 1" = 100'	REVISED: L.C.S. 02-24-11

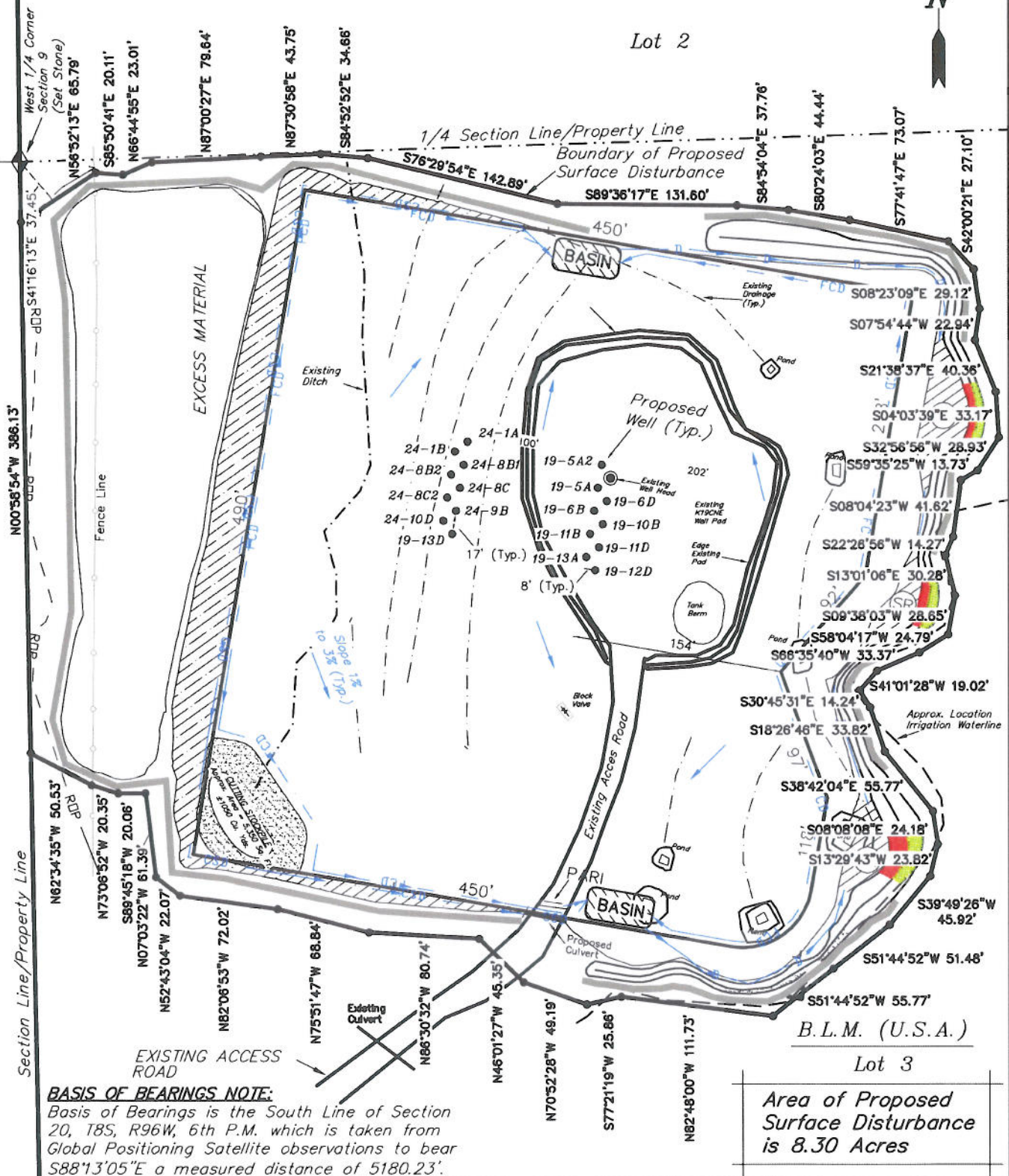
Tri State
Land Surveying, Inc.
(435) 781-2501
180 NORTH VERNAL AVE. VERNAL, UTAH 84078

SHEET
7
OF 11

ENCANA OIL & GAS (USA) INC

SURFACE DISTURBANCE AREA WELL PAD (K19CNE) EXPANSION Section 19, T6S, R92W, 6th P.M.

Lot 2



SURVEYED BY: C.D.S.	DATE SURVEYED: 11-08-10
DRAWN BY: L.C.S.	DATE DRAWN: 12-23-10
SCALE: 1" = 100'	REVISED: L.C.S. 02-24-11

Tri State
Land Surveying, Inc.
(435) 781-2501
180 NORTH VERNAL AVE. VERNAL, UTAH 84078

SHEET
8
OF 11