

DALEY LAND SURVEYING, INC.

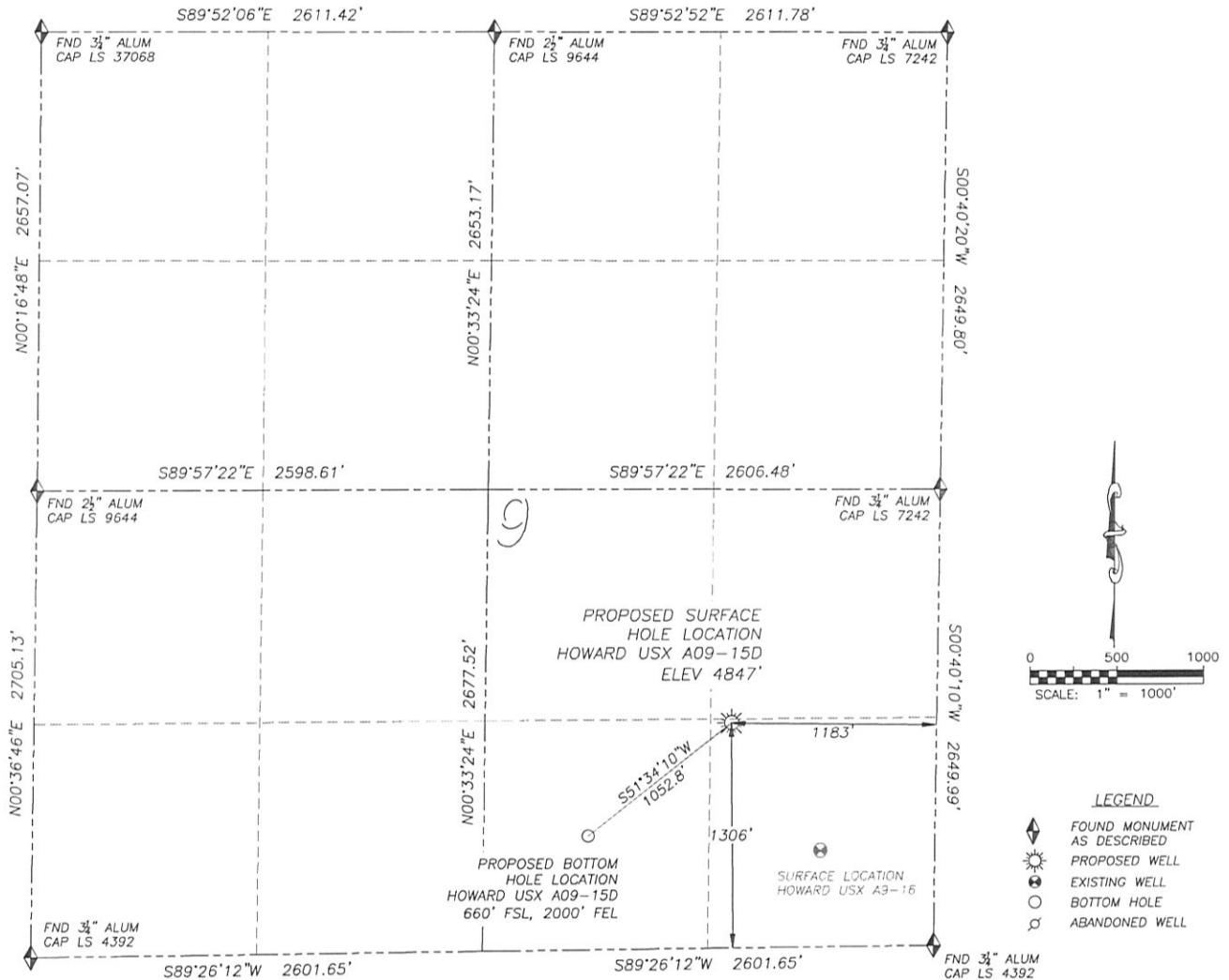
PARKER, CO. 80134

303 953 9841

WELL LOCATION CERTIFICATE

HOWARD UX A09-15D

SECTION 9, TOWNSHIP 6 NORTH, RANGE 64 WEST OF THE 6TH PRINCIPAL MERIDIAN

**NAD 83 LATITUDE AND LONGITUDE**

HOWARD UX A09-15D SURFACE HOLE:

LATITUDE: N40.49695°

LONGITUDE: W104.54997°

ELEVATION: 4847'

FOOTAGE: 1306' FSL, 1183' FEL

PDOP: 1.4

QTR/QTR: SE4/SE4

PROP LINE: 832'± SOUTHEAST

BOTTOM HOLE:

LATITUDE: N40.49515°

LONGITUDE: W104.55294°

FOOTAGE: 660' FSL, 2000' FEL

NEAREST EXISTING WELL:

HOWARD UX A9-16 SURFACE HOLE

LATITUDE: N40.49491°

LONGITUDE: W104.54812°

ELEVATION: 4840'

903' SOUTHEAST

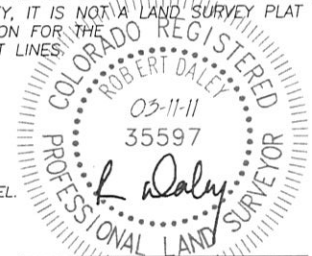
IN ACCORDANCE WITH A REQUEST FROM MIKE RODINE OF NOBLE ENERGY INC., DALEY LAND SURVEYING, INC. HAS DETERMINED THE SURFACE LOCATION OF THE HOWARD UX A09-15D WELL TO BE 1306' FSL, 1183' FEL, AS MEASURED AT NINETY (90) DEGREES FROM THE SECTION LINES OF SECTION 9, TOWNSHIP 6 NORTH, RANGE 64 WEST OF THE 6TH PRINCIPAL MERIDIAN, WELD COUNTY, COLORADO. THE BOTTOM HOLE LOCATION, PROVIDED BY THE CLIENT, IS TO BE 660' FSL, 2000' FEL.

I HEREBY CERTIFY THAT THIS WELL LOCATION CERTIFICATE WAS PREPARED BY ME OR UNDER MY DIRECT SUPERVISION, THAT THE WORK WAS COMPLETED ON 3/10/2011 FOR AND ON BEHALF OF NOBLE ENERGY, INC., AND THAT THIS MAP DOES NOT REPRESENT A BOUNDARY SURVEY, IT IS NOT A LAND SURVEY PLAT OR AN IMPROVEMENT SURVEY PLAT AND IT IS NOT TO BE RELIED UPON FOR THE ESTABLISHMENT OF FENCE, BUILDING OR OTHER FUTURE IMPROVEMENT LINES.

NOTES:

- 1) BEARINGS FOR THIS MAP ARE ASSUMED AND BASED UPON GPS OBSERVATIONS MADE BETWEEN MONUMENTS LOCATED AT THE SOUTHEAST CORNER AND EAST QUARTER CORNER OF SECTION 9, T.6N., R.64W.
- 2) HORIZONTAL DATUM IS NAD83.
- 3) VERTICAL DATUM IS NAVD88. ELEVATIONS ARE DERIVED FROM GPS OBSERVATIONS PROCESSED THROUGH OPUS, UTILIZING THE GEOID03 MODEL.
- 4) SEE LOCATION DRAWING FOR VISIBLE IMPROVEMENTS WITHIN 600' OF PROPOSED SURFACE HOLE LOCATION.
- 5) SURFACE USE: PASTURE.

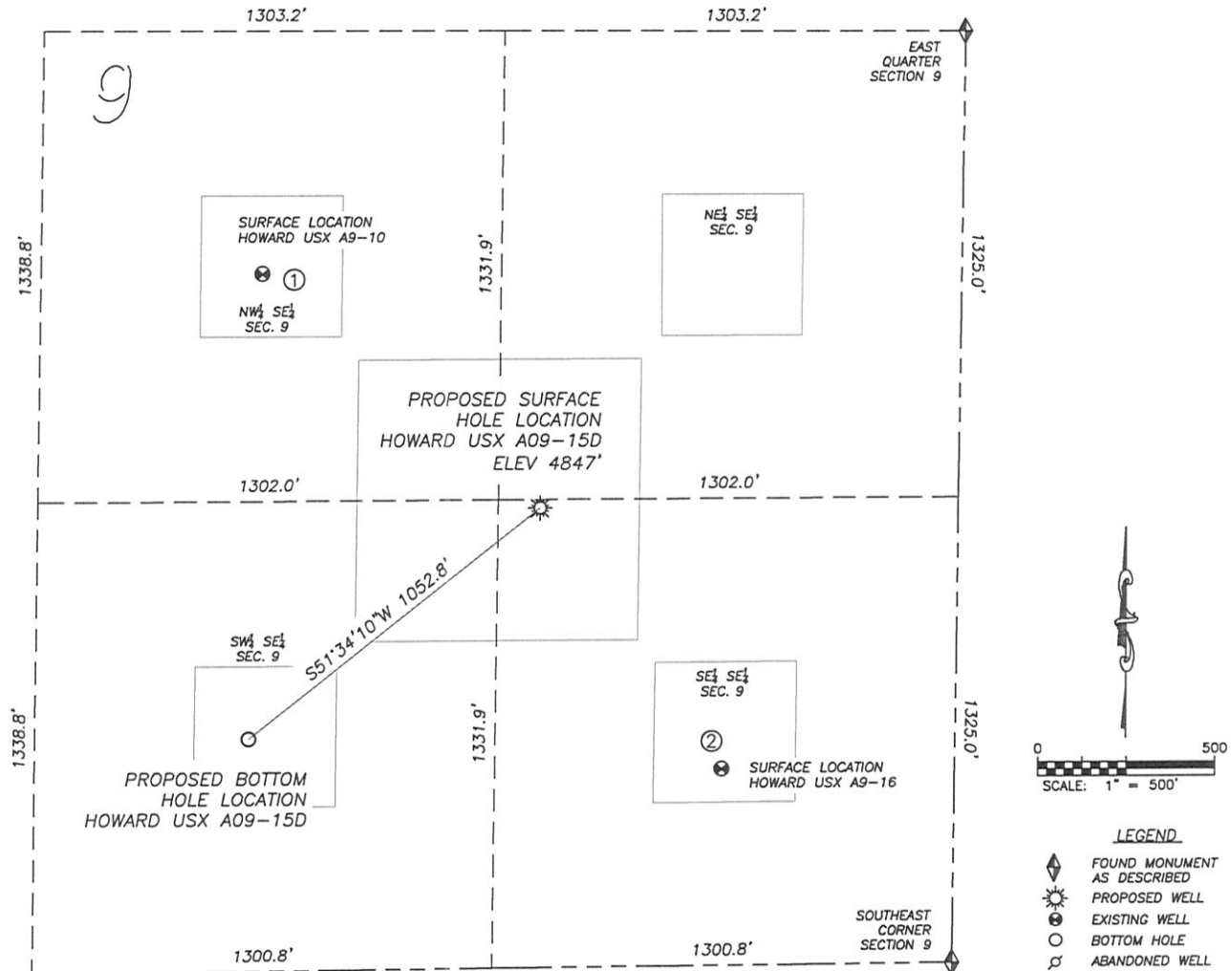
NOTICE: According to Colorado law you MUST commence any legal action based upon any defect in this W.L.C. within three years after you first discover such defect. In no event may any action based upon any such defect in this W.L.C. be commenced more than ten years from the date of the certification shown herein.



FOR AND ON BEHALF OF
DALEY LAND SURVEYING INC.,
Robert Daley, PLS 35597

SITE SKETCH HOWARD USX A09-15D

SECTION 9, TOWNSHIP 6 NORTH, RANGE 64 WEST OF THE 6TH PRINCIPAL MERIDIAN



①

HOWARD USX A9-10

NW/SE SEC. 9
 1981' FSL, 1980' FEL
 1321' N OF PROPOSED
 BOTTOM HOLE LOCATION
 LAT. N40.49878°
 LONG. W104.55281°
 EL: 4854'
 PDOP 2.1

②

HOWARD USX A9-16

SE/SE SEC. 9
 559' FSL, 659' FEL
 1342' E OF PROPOSED
 BOTTOM HOLE LOCATION
 LAT. N40.49491°
 LONG. W104.54812°
 EL: 4840'
 PDOP 1.7

NOTES:

- 1) THIS DOES NOT REPRESENT A BOUNDARY SURVEY
- 2) THE LATITUDES AND LONGITUDES SHOWN ARE REFERENCED TO NAD83
- 3) DATUM FOR ELEVATION IS NAVD88. ELEVATIONS ARE DERIVED FROM GPS-RTK OBSERVATIONS PROCESSED THROUGH OPUS, UTILIZING THE GEOID03 MODEL.

