

DALEY LAND SURVEYING, INC.

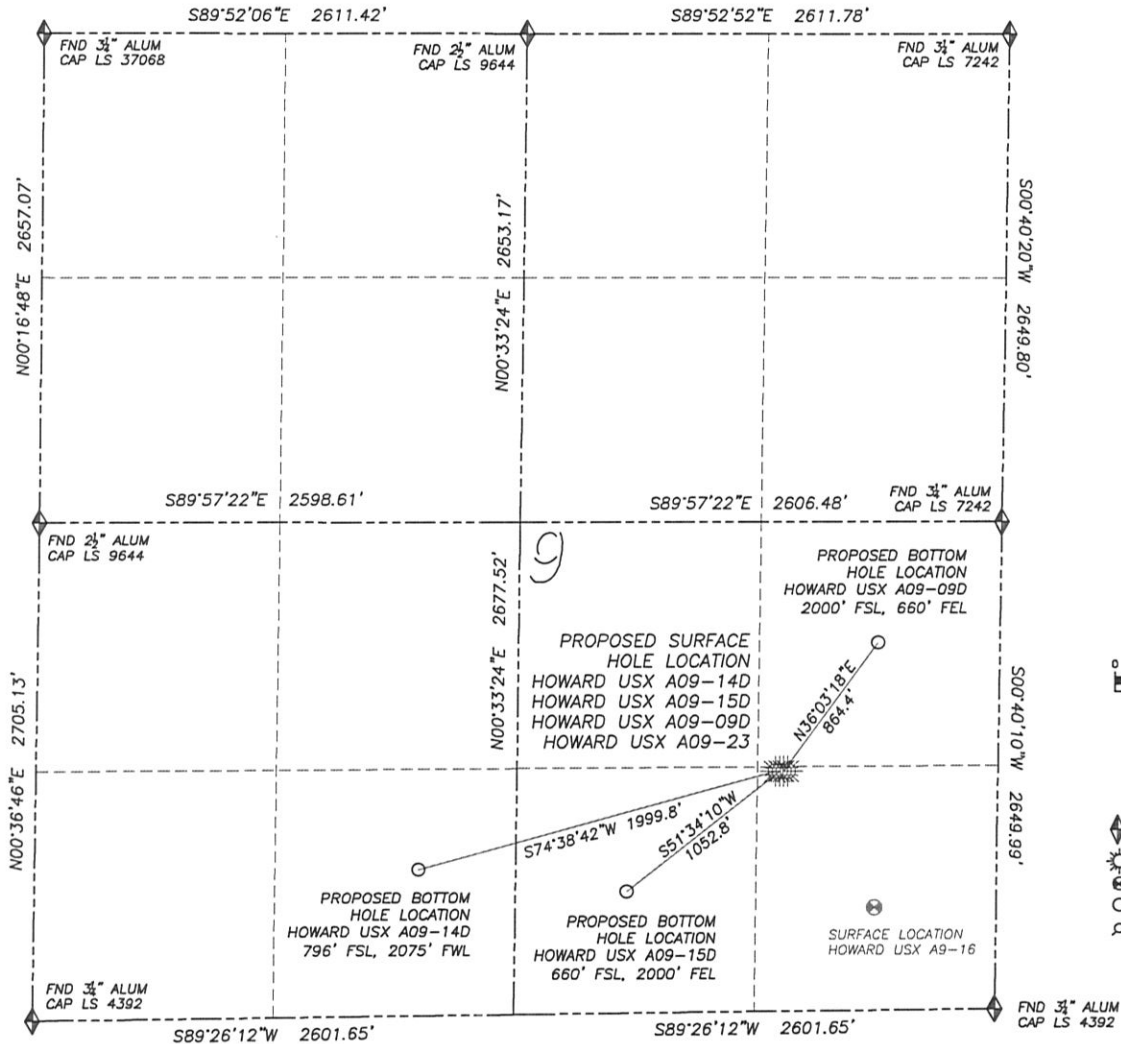
PARKER, CO. 80134

303 953 9841

MULTI-WELL PLAN DIRECTIONAL LAYOUT

HOWARD USX A09-14D, 15D, 09D & 23

SECTION 9, TOWNSHIP 6 NORTH, RANGE 64 WEST OF THE 6TH PRINCIPAL MERIDIAN



NAD 83 LATITUDE AND LONGITUDE

HOWARD USX A09-14D
SURFACE HOLE:
LATITUDE: N40.49695°
LONGITUDE: W104.55006°
ELEVATION: 4846'
FOOTAGE: 1306' FSL,
1206' FEL

BOTTOM HOLE:
LATITUDE: N40.49549°
LONGITUDE: W104.55699°
FOOTAGE: 796' FSL,
2075' FWL

NEAREST EXISTING WELL:
HOWARD USX A9-16
LATITUDE: N40.49491°
LONGITUDE: W104.54812°
ELEVATION: 4840'
916' SOUTHEAST

HOWARD USX A09-15D
SURFACE HOLE:
LATITUDE: N40.49695°
LONGITUDE: W104.54997°
ELEVATION: 4847'
FOOTAGE: 1306' FSL,
1183' FEL

BOTTOM HOLE:
LATITUDE: N40.49515°
LONGITUDE: W104.55294°
FOOTAGE: 660' FSL,
2000' FEL

NEAREST EXISTING WELL:
HOWARD USX A9-16
LATITUDE: N40.49491°
LONGITUDE: W104.54812°
ELEVATION: 4840'
903' SOUTHEAST

HOWARD USX A09-09D
SURFACE HOLE:
LATITUDE: N40.49695°
LONGITUDE: W104.54989°
ELEVATION: 4847'
FOOTAGE: 1306' FSL,
1161' FEL

BOTTOM HOLE:
LATITUDE: N40.49886°
LONGITUDE: W104.54806°
FOOTAGE: 2000' FSL,
660' FEL

NEAREST EXISTING WELL:
HOWARD USX A9-16
LATITUDE: N40.49491°
LONGITUDE: W104.54812°
ELEVATION: 4840'
891' SOUTHEAST

HOWARD USX A09-23
SURFACE HOLE:
LATITUDE: N40.49695°
LONGITUDE: W104.54981°
ELEVATION: 4847'
FOOTAGE: 1306' FSL,
1138' FEL

NEAREST EXISTING WELL:
HOWARD USX A9-16
LATITUDE: N40.49491°
LONGITUDE: W104.54812°
ELEVATION: 4840'
879' SOUTHEAST